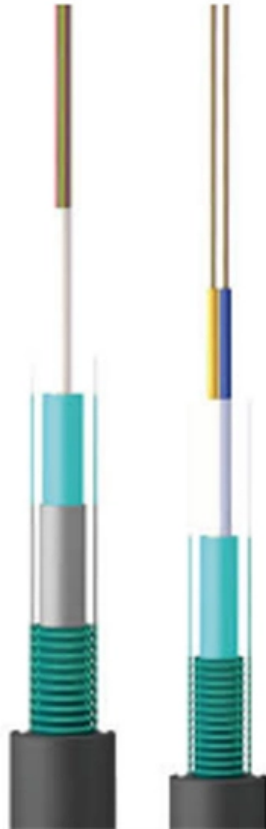




**Adam Tas Corridor Energy**

# **10 Gigabit Optical Module TX to RX**





## 10 Gigabit Optical Module TX to RX

---



### Gigabit SFP Module: A Complete Guide to 1G SFP Transceivers

A gigabit SFP module (1G SFP module) is a Small Form-factor Pluggable (SFP) transceiver designed to support 1Gbps Ethernet transmission by converting electrical signals from a network device into

### SFP Optical Transceivers: How Pluggable Optics Are Reshaping

1. Introduction: The Pluggable Revolution In the era of hyperscale AI computing and always-on global connectivity, the optical transceiver module has quietly become one of the most



### Data Diode 10-Gigabit SFP Module , Unidirectional

Overview The FiberPlex SFX-10DD Data Diode provides a unidirectional network connection with 10-gigabit optics. Featuring data-diode functionality, the hardware

### Cisco 10GBASE SFP+ Modules Data Sheet

The Cisco 10GBASE SFP+ modules give you a wide variety of 10 Gigabit Ethernet connectivity

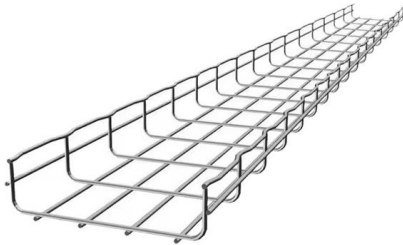


options for data center, enterprise wiring closet, and



### **1G BiDi SFP Module , 1000BASE-BX-U, 1310/1490nm, 10km, DOM**

Maximize fiber capacity with our 1G BiDi SFP module. Single-fiber solution for 10km links, 1310nm/1490nm wavelengths, and DOM support. Cost-effective and compatible.



### **XG-SFP-LR-SM1310 10GBASE-LR SFP+ 1310-nm 10-km DOM**

XG-SFP-LR-SM1310 10GBASE-LR SFP+ 1310-nm 10-km DOM Duplex LC SMF Optical Transceiver Module Applicable to data center and campus networks, enabling cost-effective, efficient, and high



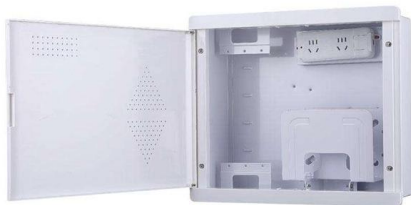
### **SFP Transceiver Optical Fiber Single-Mode LC 1000Base-BX**

Wavelengths: receive (RX), 1310 nm; transmit (TX), 1550 nm Equivalent to the Cisco GLC-BX40-D transceiver Standard SFP format Supports digital diagnostic monitoring (DDM) Reduced



## **CWDM-10G-SFP-10-27**

Compatible 10G CWDM SFP+ Module, Tx/Rx 1270nm, 10km over SMF. Supports 1.25-11.32 Gbps, 11dB budget, LC/UPC, 0-70C.



## **SFP+ BiDi 10G Guide: Single Fiber 10G Optical Transceivers**

SFP+ BiDi 10G is a 10-gigabit optical transceiver technology designed to transmit and receive data over a single strand of single-mode fiber, making it an efficient solution for modern fiber-constrained

## **10G3T2-USFPC-L 10Gb/s TX:1330nm RX:1270nm Bidirectional 60km**

The 10G3T2-USFPC-L is a 10Gb/s bidirectional SFP+ optical transceiver with TX:1330nm and RX:1270nm wavelengths, optimized for single-mode fiber (SMF) connections.



## **10G SFP+ Optical Transceivers , Transceiver Module**

FS 10GbE SFP+ module solutions provide a wide variety of 10 Gigabit Ethernet connectivity options for data centers, enterprise wiring closets, Internet Service



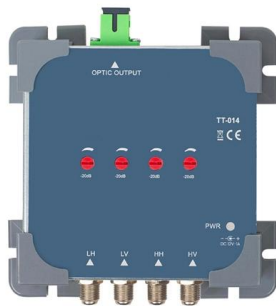
### 1000BASE-BX SFP 1310TX/1490RX 10km Transceiver Datasheet , FS

The optical output can be disabled by a LVTTTL logic high-level input of TX Disable, and the system also can disable the module via I2C. TX Fault is provided to indicate that degradation of the laser. Loss of



### SFP+ BiDi 10G Guide: Single Fiber 10G Optical Transceivers

Unlike traditional 10G SFP+ modules that require two fibers--one for transmit (TX) and one for receive (RX)--a BiDi SFP+ 10G module uses bidirectional transmission on a single fiber, making it a highly



### SFP-1040-WB

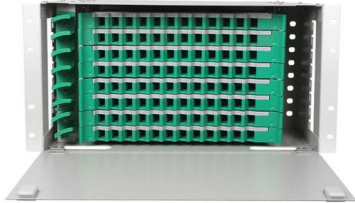
The SFP-1040-WB is a BiDirectional single fiber strand 10G SFP+ optical module using Tx:1330nm and Rx:1270nm wavelengths. The transceiver supports all 10G





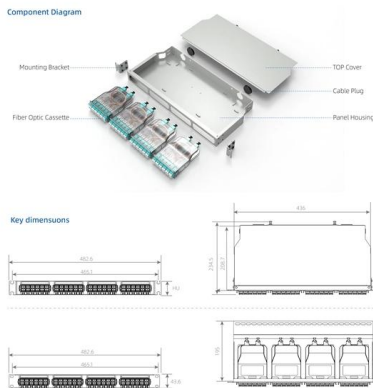
### Amazon : 10Gtek Gigabit Ethernet Media Converter

LED indicators for TX, FX LINK/ACT, POWER, FDX can dynamic feedback link connection state and fault detection to easily monitor network



### Gigabit Fiber Optical Media Converter 10/100/1000Mbps Single Mode

Gigabit Fiber Optical Media Converter 10/100/1000Mbps Single Mode 20Km SC-Port External Power Supply Description Gigabit Fiber Optical Media Converter 10/100/1000Mbps Single Mode 20Km



### 10G BiDi SFP+ 10km , Tx1330/Rx1270 , Single Fiber Compatible

Compatible 10G BiDi SFP+ for 10km single fiber. Tx1330/Rx1270nm, 6.2dB budget, 50% fiber savings. Works with 80+ brands.

### Optic Modules Datasheet

datasheet is intended to guide the user through the various options available when choosing an optic module for a given platform depending on the architecture. The following table lists the different



### **10G SFP+ Module BIDI Fiber Optic Transceiver LC**

Featured with 1.5W low-power, high-density and high-speed, the SFP+ transceiver offers a popular way to help you quickly ramp up to 10G transmission. Tested in



### **SFP+ 10G optical transceivers**

This category includes all types of SFP+s using two strands: one for Tx and one for Rx. The category has most common multi-mode and single-mode versions but also covers long-haul options.



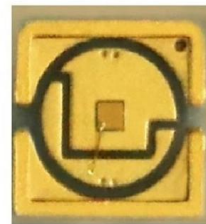
### **SFP Optical Transceiver , SFP Optical Module , Perle**

Perle SFP Optical Transceivers are designed for use with Perle SFP Media Converters, Industrial Ethernet Switches, IOLAN SCG Console Servers and third



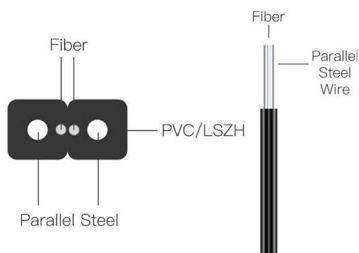
## Cisco Transceiver Modules

Cisco Transceiver Modules - Learn product details such as features and benefits, as well as hardware and software specifications.



## Gigabit Ethernet

Gigabit Ethernet was the next iteration, increasing the speed to 1000 Mbit/s. The initial standard for Gigabit Ethernet was produced by the IEEE in June 1998 as



## SFP-10G-ER Explained: Powering 40km 10Gbps Optical

Powering the Distance: The Critical Role of SFP-10G-ER Modules In the relentless pursuit of higher bandwidth and extended reach for



### Cisco 10 Gigabit Modules

Discover Cisco 10 Gigabit Ethernet Modules, offering high-speed, reliable connectivity to enhance network performance and scalability.



### SFP-10G-ER Explained: Powering 40km 10Gbps Optical

This comprehensive guide dives deep into the SFP-10G-ER optical transceiver module. Learn its technical specifications, key applications,



### 10 Gigabit Ethernet

10 Gigabit Ethernet (10GE, 10GbE, or 10 GigE) is a group of computer networking technologies for transmitting Ethernet frames at a rate of 10 gigabits per second.



## Contact Us

---

For datasheets, pricing, or custom telecom energy solutions, please visit:  
<https://koskolong.co.za>