



**Adam Tas Corridor Energy**

# **10 Gigabit Optical-to-Electrical Module Test**





## Overview

---

The 10 gigabit module standard is the Enhanced Small Form-factor Pluggable transceiver, generally called SFP+. Physical layer modulesTo implement different 10GbE physical layer standards, many interfaces consist of a standard socket into which different physical (PHY) layer modules may be plugged.



## 10 Gigabit Optical-to-Electrical Module Test

---



### A 5-Minute Guide to Understanding 10 GPON

10G PON (10 Gigabit Passive Optical Network) refers to a passive optical network with fiber link transmission speeds of up to 10 Gbps. Like GPON and EPON, 10G

### Gigabit SFP Module: A Complete Guide to 1G SFP Transceivers

A gigabit SFP module (1G SFP module) is a Small Form-factor Pluggable (SFP) transceiver designed to support 1Gbps Ethernet transmission by converting electrical signals from a network device into



### 10 Gigabit Fiber SFP+ Optical Transceiver Module

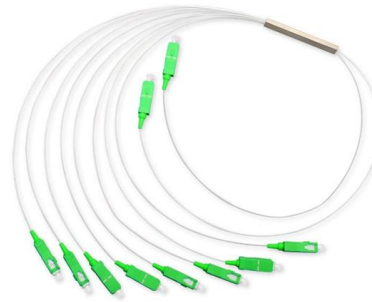
10GBase-LR Gigabit Fiber SFP+ Optical Transceiver Module The line of Intellinet Network Solutions Enhanced Small Form Factor Pluggable (SFP+) Transceivers provides customers with a combination

### Overview of SFP Gigabit Optical Module

The SFP (Small Formfactor Pluggable) gigabit optical module is a critical component in optical



communication systems, used to achieve optical-to-electrical conversion. Typically, devices



MTP MPO SC-Type Fiber Adapter



## Media Converter

GT-tech® is a brand of 10Gtek's Media Converter. 100M Media Converter, Switch, POE Switch. 10/100/1000 Media Converter, Switch, POE Switch.

## Test Solutions for 10 Gbps Ethernet Networks

Both optical (single-mode and multi-mode) and copper (through CAT 7 cabling) interfaces are supported at 10 Gbps rates. GL offers both portable and rack



## 10GbE SFP+ PHYs: Requirements and leading

SFP+ optical transceivers enable the highest port counts per-card of any of the 10-Gbit/sec optical modules. The SFP+ offers densities comparable to



## OEM 10GbE Optics Cheat Sheet , Tech Guide , Curvature

Curvature offers OEM optics cheat sheet that provides details such as module types and optical standards of 10GbE XENPAKs optics from the OEM.



### EX10

Validate bandwidth speeds up to full line rate 10 Gigabit Ethernet, test residential Wi-Fi 7 and monitor residential quality of experience Applications Broadband

## Test Solutions for 10 Gbps Ethernet Networks

High speed 10 Gbps Ethernet links are now common place in both Local Area and Wide Area networks. Both optical (single-mode and multi-mode) and copper



### Roc Yu MCU Central FAE Team

To evaluate performance of an assembled board, this application note also describes a complete test configuration, includes setup, hardware (evaluation board), and software (GUI).



### 10 Gbps Bit Error Rate Analyzer BERT 04X10 Electrical Optical

The OPB04X10 incorporates four pattern generators, four BER analyzers, internal reference clocks, and clock recovery circuits in one compact module to simultaneously test four channels at data rates up

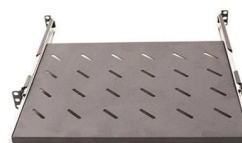


### 10 Gigabit Fiber SFP+ Optical Transceiver Module

10 Gigabit Connectivity Intellinet Network Solutions 10GBase-LR Fiber SFP+ Optical Transceiver Module, model 507479, is the right choice when it comes to

### Introduction of 10G SFP+ Optical Modules

10G SFP+ optical module is a popular category widely used in data centers, enterprise networks, edge devices, and CPEs. Function: They're



Webit Cabling



## Cisco 10GBASE SFP+ Modules Data Sheet

The Cisco 10GBASE SFP+ modules give you a wide variety of 10 Gigabit Ethernet connectivity options for data center, enterprise wiring closet, and

## Measurements on IEEE 802.3ae 10 Gb/s Ethernet

This prominence is well reflected when discussing measurement issues. 10 Gigabit Ethernet (GbE) introduces several measurements not widely used before, such as optical modulation amplitude



## Optical Fiber and 10 Gigabit Ethernet

As 10 Gigabit Ethernet (10GbE) is introduced into networks the physical limitations and properties of optical fiber introduce new challenges for a network designer.

## Optical Network Tester (ONT) Module-E, Jitter Module

The Module-E for the JDSU ONT Platform addresses the needs of R&D and SVT labs with all of the necessary functionality for testing OTN/LAN/WAN/SDH/SONET/FC networks at various wavelengths.



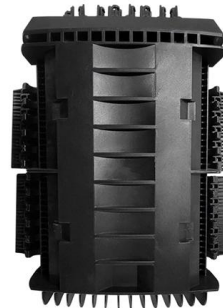


## A Simple Guide to SFP-10G-SR and Its Practical Uses

When it comes to cost-effective 10 Gigabit Ethernet over short to medium distances, the SFP-10G-SR optical transceiver remains a cornerstone

## Cabling and Test Considerations for 10 Gigabit

Introduction Current communication data rates in local networks range from 10/100 megabits per second (Mbps) in Ethernet to 1 gigabit per second (Gbps) in fiber distributed data

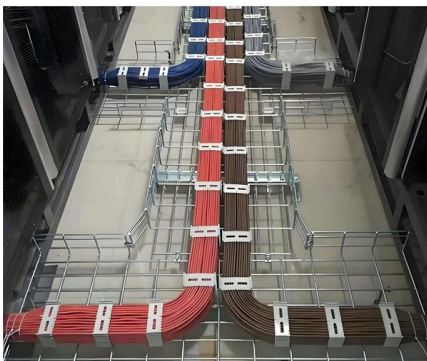


## 10GE SFP+ Optical Modules

Single-fiber bidirectional (BIDI) optical modules must be used in pairs. For example, SFP-10G-BXU1 must be used with SFP-10G-BXD1.

## Cisco 10G Routed PON ONT Data Sheet

These 10G optical network terminals for fiber-to-the-premises applications can be managed remotely and are interoperable with the Cisco Routed PON solution. Three models offer a



## 10G SFP+ Optical Transceivers , Transceiver Module

FS 10GbE SFP+ module solutions provide a wide variety of 10 Gigabit Ethernet connectivity options for data centers, enterprise wiring closets, Internet Service

## How to Test Optical Transceiver Modules: Methods, Metrics & Best

Learn how to test optical transceiver modules using power meters, BERT testers, and DDM tools. Ensure compatibility, performance, and reliability in data center and enterprise networks.



## SFP+ 10G Passive Loopback Testing Module Datasheet , FS

10G SFP+ Passive Loopback Testing Module is individually tested on corresponding equipment such as Cisco, Arista, Juniper, Dell, Brocade and other brands, and passes the monitoring of FS



## Contact Us

---

For datasheets, pricing, or custom telecom energy solutions, please visit:  
<https://koskolong.co.za>