



Adam Tas Corridor Energy

10 Gigabit Switch Fiber Optic Transmission





10 Gigabit Switch Fiber Optic Transmission



Fiber Optic Cables vs. Ethernet Cables: What's the

Fiber optic cables and Ethernet cables are two of the most important data transfer cable standards there are, but with their use cases often crossing

Fast, Gigabit, and 10 Gigabit Ethernet Switches with SFP+ Modules

Managed and unmanaged Layer 2 and Layer 3 fiber optic Ethernet switches. With 10G SFP+ fiber optic transceiver modules, they meet your highest bandwidth demand.



10 Gigabit Ethernet

The 10 gigabit module standard is the Enhanced Small Form-factor Pluggable transceiver, generally called SFP+. Based on the Small Form-factor Pluggable

Cisco 10GBASE SFP+ Modules Data Sheet

The Cisco 10GBASE SFP+ modules give you a wide variety of 10 Gigabit Ethernet connectivity options for data center, enterprise wiring closet,



SFP+, XFP, QSFP+, DAC Twinax Cable 10Gtek Transceivers Co., Ltd

DAC Twinax Cable Maker. CE, FCC, RoHS, ISO9001 Certified. Professional Manufacturer focusing on SFP+ Cables, QSFP+ Cables, MiniSAS Cables, QSFP Cables, XFP Cables, CX4 Infiniband Cables



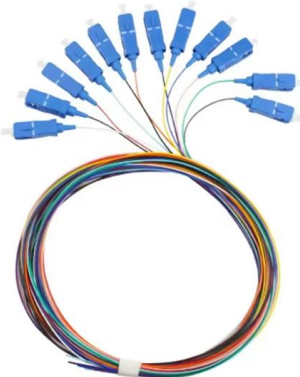
What is Ethernet: networking guide with speeds and

Ethernet is defined as a networking technology that includes the protocol, port, cable, and computer chip needed to plug a desktop or laptop into a



Optic Modules Datasheet

4 Optic Modules Data Sheet SFP (form factor) = small form-factor pluggable transceiver SMF (media) = single-mode fiber-optic MMF (media) = multimode fiber-optic XFP (form factor) = 10-gigabit small





Ethernet Cables Types: Cat 3, 5, 5e, 6, 6a, 7, 8 Wires

This tutorial explains the Definition of ethernet cables, ethernet cable types, shielded cables, and Ethernet cables categories like Cat 3, 5, 5E, 6, 6a, 7,



4 Port Gigabit over fiber Transceiver

4-Port Gigabit Ethernet over Single Fiber Transceiver Thor Fiber's 4-Port Gigabit Ethernet Transceiver transmits five 10/100/1000 Mbps Ethernet channels over a

Gigabit Ethernet

Gigabit Ethernet was the next iteration, increasing the speed to 1000 Mbit/s. The initial standard for Gigabit Ethernet was produced by the IEEE in June 1998 as



SFP3312-20A: SFP+ Switch 10Gig Bi-Directional Fiber

They enable 10 Gbps optical data transfer over a single duplex fiber core, reaching up to 20 km--perfect for enterprise networks, metropolitan and regional links.



Gigabit Switch Fiber Optic Transceiver Commercial Grade Ring

No switch capacity 1Gbps place of origin China model number XH-FSYG2D6HW-320S Product Name Ethernet Switch Ports 2 Optic Port 6 electric port Power Supply DC 12V 5A fiber type single

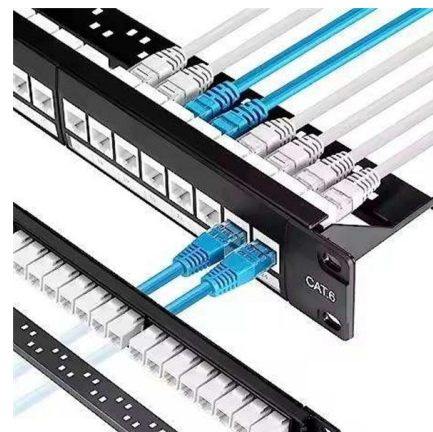


8 Fiber Port & 2 UTP lan port Fiber optic ethernet switch

Multi-gigabit optical aggregation series is my company based independent software research and development from a fiber aggregation switches, which have 8 *

InfiniBand

InfiniBand switch with CX4/SFF-8470 connectors In addition to a board form factor connection, it can use both active and passive copper (up to 10 meters) and





How to interconnect the Gigabit RJ45 port with the SFP

Now Gigabit Ethernet has been popularized in a large area, and Gigabit Ethernet switches are also widely used in scenarios such as enterprise

Amazon : 8 Port 10Gb SFP+ Web Managed Fiber

?10Gb Super-Fast Fiber Switch? This 10 gigabit switch features 8 x 10G SFP+ ports and 160Gbps switching capacity, providing higher-speed connectivity for

MTP MPO SC-Type Fiber Adapter



What Is Fiber Optics? Definition from SearchNetworking

Fiber optics is used for long-distance and high-performance data networking. It is also commonly used in telecommunication services, such as

Unlocking the Power of 10 Gigabit Ethernet: Your Guide

This guide explains the workings, benefits, and best practices for 10G switch solutions while helping you choose the ideal switch for your network infrastructure.



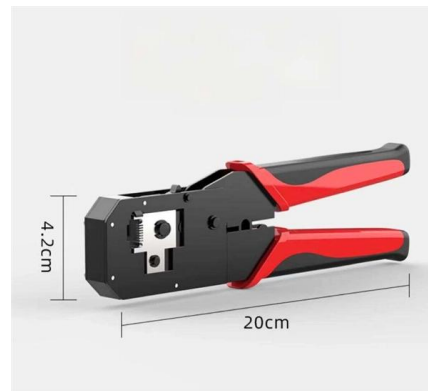
10G Switch ELFCAM

Simple, stable and scalable 10G deployment for multi-gig boxes, NAS, fiber backbone and small office networks.



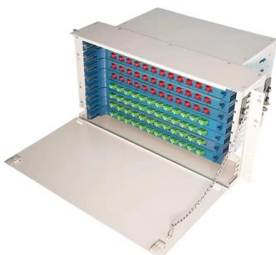
What is the Difference Between a 10 Gigabit Copper

What is a 10 Gigabit Fiber Switch? The 10 Gigabit Fiber Switch provides long-haul 10 Gigabit transmission over 10G SFP+ ports on the panel.



Synchronous optical networking

Synchronous Optical Networking (SONET) and Synchronous Digital Hierarchy (SDH) are standardized protocols that transfer multiple digital bit streams synchronously over optical fiber using lasers or





An introduction to SFP ports on a Gigabit switch

An introduction to SFP ports on a Gigabit switch SFP ports enable Gigabit switches to connect to a variety of fiber and Ethernet cables and extend switching functionality throughout the



Passive optical network

Passive optical network A fiber optic cable assembly with SC APC connectors, as commonly used to link optical network terminals to passive optical networks A

10 Gigabit SFP Switches

10 Gigabit SFP switches offer ultra-fast, scalable networking with fiber and copper flexibility - ideal for data centers, enterprises, and high-performance applications.



10 Gigabit SFP+ Fiber Optic Transceivers , High-Speed & Reliable

Our 10 Gigabit SFP+ transceivers are designed to provide high-speed fiber optic connectivity for network switches and media converters equipped with standard SFP ports. These transceivers offer speeds



10 Gigabit Ethernet

Overview Physical layer modules Optical fiber Copper WAN PHY (10GBASE-W)

To implement different 10GbE physical layer standards, many interfaces consist of a standard socket into which different physical (PHY) layer modules may be plugged. PHY modules are not specified in an official standards body but by multi-source agreements (MSAs) that can be negotiated more quickly. Relevant MSAs for 10GbE include XENPAK (and related X2 and XPAK), XFP and SFP+. When choosing a PHY



Rear of the optical fiber distribution box



China OEM Factory para sa Gigabit Managed Poe Switch

5-port Fiber Ethernet Switch, 1-port 100Base-FX and 4-port 10/100Base-T(X) Introduction JHA-F14 series is complies with IEEE802.3 standards, It is designed to convert data signal between 100Base

Contact Us

For datasheets, pricing, or custom telecom energy solutions, please visit:
<https://koskolong.co.za>