



Adam Tas Corridor Energy

10 Gigabit optical port plugged into gigabit power module





10 Gigabit optical port plugged into gigabit power module

Cisco 10 Gigabit Modules

Cisco currently supports many different port types where each one is optimized for the reach and transmission media demanded by a particular 10 Gigabit



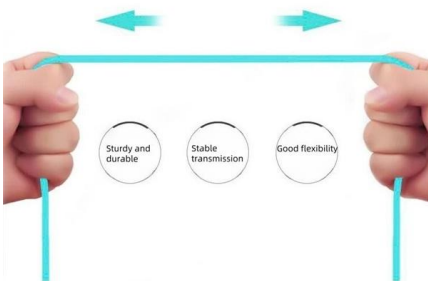
Comprehensive Guide for Optimal 10G SFP+ Module

Introduction to 10G SFP+ Features 10G SFP + is a miniaturized photoelectric conversion module specifically designed to support high-speed



More durable and robust

The outer layer is made of environmentally friendly PVC, which is soft and elastic. It can be stretched without damage, so you can use it with confidence.



Are 10G Optical Modules Compatible with Gigabit Optical Ports

When it comes to compatibility between optical networking equipment and optical modules, it is critical to ensure a proper match. In this installment, we will explore the compatibility

Gigabit Ethernet Network Modules

Gigabit Ethernet network modules support GBIC hot-swapping. To save time, do not power down the router and network module before installing



or

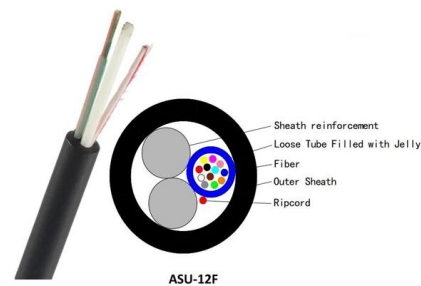


Is SFP Compatible With SFP+? Can 10G SFP+ Run at 1G SFP Port?

SFP port (electrical port and optical port) enables a gigabit switch to achieve fiber uplink over longer distances or short-range copper uplinks by inserting the corresponding SFP module

Standard Troubleshooting for SFP modules and Media

For a Gigabit Ethernet Media Converter that only supports 1000BASE-T, it can only work with a 1000BASE-T Ethernet port; For other Gigabit Ethernet Media



Gigabit Interface Converter Installation Note

Warning Invisible laser radiation may be emitted from the aperture ports of the single-mode fiber-optic modules when no cable is connected. Avoid exposure and do not stare into open apertures.



FEATURES AND SPECIFICATIONS SFP+ 10 Gbps Interconnect

Available in passive and active designs to provide system design flexibility, minimize design requirements in the host, enables "optical module" performance, provides extended reach to 25



Installation and Maintenance Guide for Gigabit Optical Modules and 10

As an essential component of network communication, optical modules have been widely used in various scenarios such as data centers, enterprise LANs, and WANs. An optical module is

What is GBIC? Everything You Need to Know (2024)

What is GBIC? GBIC stands for Gigabit Interface Converter, sometimes also called GBIC converter. It is a hot-pluggable optical transceiver



Gigabit Interface Converter Installation Note

Invisible laser radiation may be emitted from the aperture ports of the single-mode fiber-optic modules when no cable is connected. Avoid exposure and do not stare into open apertures.



Solved: SFP Modules for Fast Ethernet

? 10-16-2013 03:33 PM The SFP port is just a place whereby the SFP optical module is seated into the switch (connects internally to power, data buses, etc). The SFP provides the flexibility to install a



Understanding 10G SFP Ports on Cisco Switches: A

Discover the power of 10G SFP ports on Cisco switches. This guide explains 10 gigabits per second capabilities, uses, and benefits for network

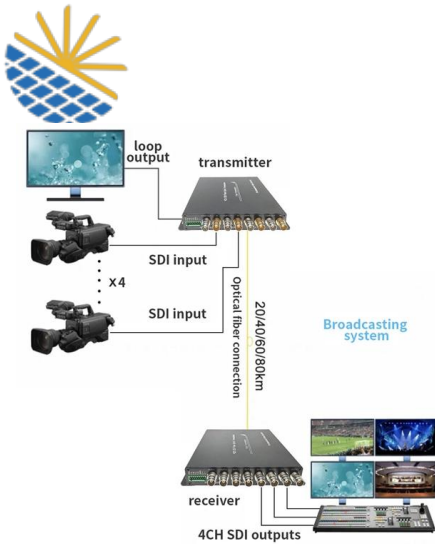
Gigabyte Passive Optical Network (GPON)

Gigabyte Passive Optical Networks (GPON's) are networks which rely on optical cables to deliver information. GPON's are currently the leading form of Passive Optical Networks.



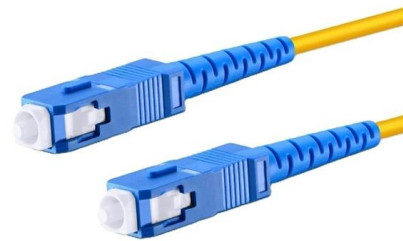
10 Gigabit Fiber SFP+ Optical Transceiver Module

This 10 Gigabit Fiber SFP+ Optical Transceiver Module supports standard digital diagnostics monitoring (DDM) functions, also known as digital optical monitoring



Gigabit Ethernet

Gigabit Ethernet was the next iteration, increasing the speed to 1000 Mbit/s. The initial standard for Gigabit Ethernet was produced by the IEEE in June 1998 as



10 Gigabit Fiber SFP+ Optical Transceiver Module

10GBase-LR Gigabit Fiber SFP+ Optical Transceiver Module The line of Intellinet Network Solutions Enhanced Small Form Factor Pluggable (SFP+) Transceivers provides customers with a combination



Introduction of 10G SFP+ Optical Modules

10G SFP+ Optical Module is a type of SFP+ transceiver that supports 10 Gigabit per second (10Gbps) data rates and is an enhanced version of the





Unlocking the Potential of 10GE SFP+: What You Need

Discover the essentials of 10GE SFP+ transceivers for high-speed data connectivity. Learn about 10GBASE-T modules, optical options, and their

10G SFP+ Transceiver

10 Gigabit optical transceiver has a data rate of 10Gbps, packaging in SFP+. 10g sfp+ transceiver is widely used in 10 Gigabit Ethernet, SDH optical transmission



Understanding SFP to SFP+ Compatibility: A

For instance, if a 10Gb SFP+ module is plugged into a 10Gb switch port, it will only operate at 10Gb. In this scenario, if you connect it to a gigabit

10G SFP+ Cable and Transceiver Modules Data Sheet

Product overview The FS® 10GBASE Quad Small Form-Factor Pluggable (SFP+) portfolio offers customers a wide variety of high-density and low-power 10 Gigabit Ethernet connectivity options for



What Is an SFP Port on a Gigabit Switch?

An SFP port (Small Form-Factor Pluggable port) on a Gigabit switch is a dedicated slot designed to support SFP modules, enabling flexible data

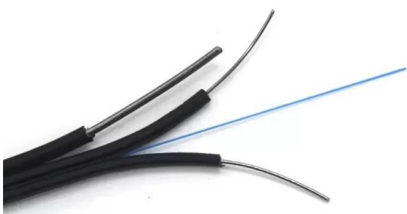
10GbE SFP+ PHYs: Requirements and leading

SFP+ optical transceivers enable the highest port counts per-card of any of the 10-Gbit/sec optical modules. The SFP+ offers densities comparable to



An introduction to SFP ports on a Gigabit switch

An introduction to SFP ports on a Gigabit switch SFP ports enable Gigabit switches to connect to a variety of fiber and Ethernet cables and extend switching functionality throughout the





10 Gigabit Fiber SFP+ Optical Transceiver Module

This lets you monitor parameters of the SFP, such as optical output power, optical input power, temperature, laser bias current, and transceiver supply voltage, in



10GBASE-T SFP+ 10 Gigabit Electrical Port Module,

10GBASE-T SFP+ 10 Gigabit Electrical Port Module, 30m, Cat 6/6A, RJ-45 GIGALIGHT 10G SFP+ electrical port module is widely used in 10GBASE-T

10 Gbit/s SFP+ Optical Modules

10 Gbit/s SFP+ optical modules apply to 10 GE optical ports. The wavelength can be 850 nm, 1310 nm, or 1550 nm, and the transmission distance ranges from 0.5 km (0.31 mi) to 80 km (49.71 mi).



Contact Us

For datasheets, pricing, or custom telecom energy solutions, please visit:
<https://koskolong.co.za>