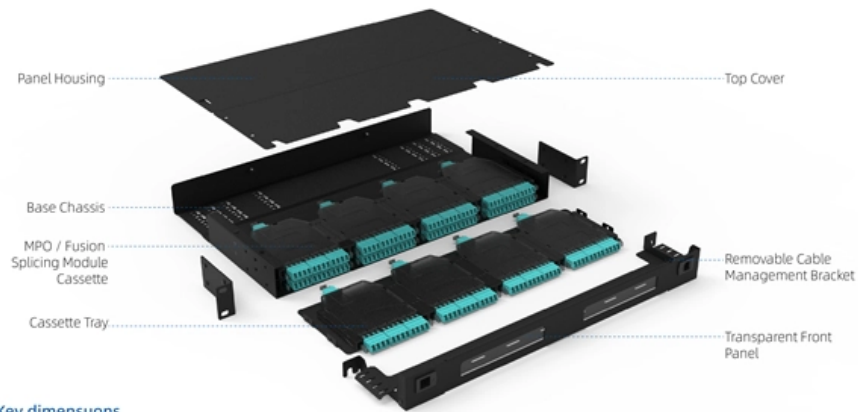


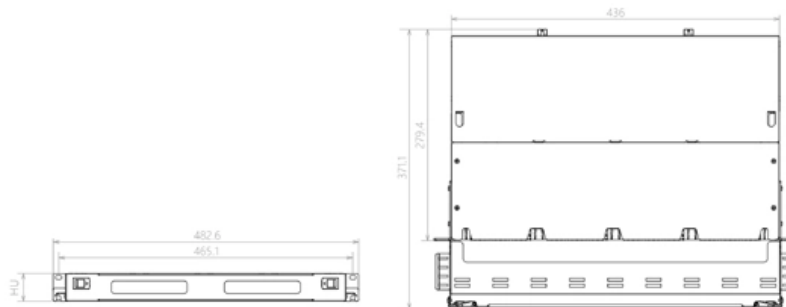


1000m Optical Module Distributor

Component Diagram

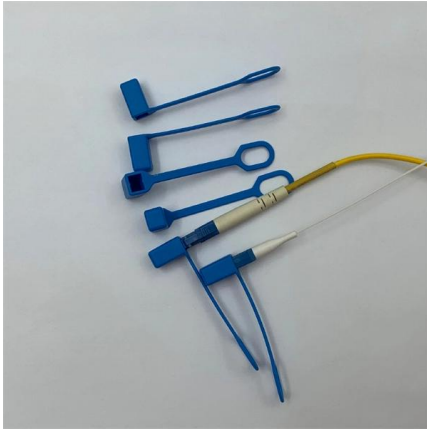


Key dimensions





1000m Optical Module Distributor



1*1000M FX and 1*10/100/1000M TX (OPT-2200 series)

Optone Technology, located in Shenzhen, China, was founded in 2003, which is professionally engaging in researching & developing, manufacturing, and

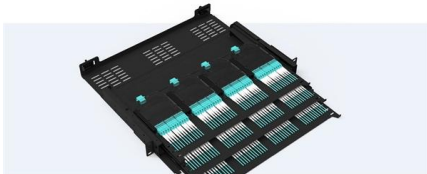
Wholesale Optical Transceivers Module , 100G

Shop high-speed optical transceivers from Unitekfiber. We offer 100% compatible 40G, 100G, and 400G QSFP-DD modules for data centers. Expert technical



Pre-Terminated Patch Panel

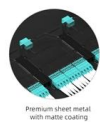
- Standard 19" width
- Max 144 fibers in 1U
- Ultra-High Density Ready



Dual-row, easy install & maintain



Lightweight ABS MPO cassette



Premium sheet metal with matte coating

CommScope RUCKUS Networks ICX Switch Modul 1000Base-LHA SFP Optic

The CommScope RUCKUS Networks ICX Switch Modul 1000Base-LHA SFP optic is an optical transceiver designed for high-performance networking applications. Equipped with SMF fiber, LC

1000BASE-T Industrial SFP , -40 to 85°C , EDGEOPTIC , EDGE

Supporting 1000 Mbps data rates over distances up to 100m with extended temperature range



-40 to 85°C, this industrial module features RJ45 interface for harsh outdoor, transportation,



Edge Optical Solutions 1000M-SFP-T SFP Module

The 1000M-SFP-T Transceiver is fully compliant to SFP Multi Source Agreement INF-8074i. The module is compatible with 80% of networking equipment, where a

1G SFP Transceivers , Mini-GBIC SFP Modules

Click to get your 1GBE transceiver modules from nearby warehouses. 30-Day Free Return. Trusted by 260K+ Enterprise Users.



1000BASE-LX SFP 20km SMF Optical Transceiver Module

Asterfusion 1G SFP optical transceiver module provides 1000BASE-LX links up to 20km over SMF ideal for ISP backbones, enterprise LAN & SAN networks.



100BASESX SFP: How to Select the Right Optical Module

If the module's optical power, receiver sensitivity, or supported distance doesn't align with your real cabling conditions, you may see intermittent issues such as CRC errors, packet drops, link flaps, or



1000BASE EX SFP Transceiver , 1310nm 40km DOM Single-Mode Module

The 1000BASE EX SFP 1310nm 40km Optical Transceiver Module is designed for long-distance Gigabit Ethernet applications, offering reliable and high-performance data transmission over single-mode

1000M Media Converter

Reachoptics'1000M Media Converter supports IEEE802.3z 1000Base-Tx/Fx protocol, as well as full duplex and half duplex mode. This manual is for 1000M transceivers.



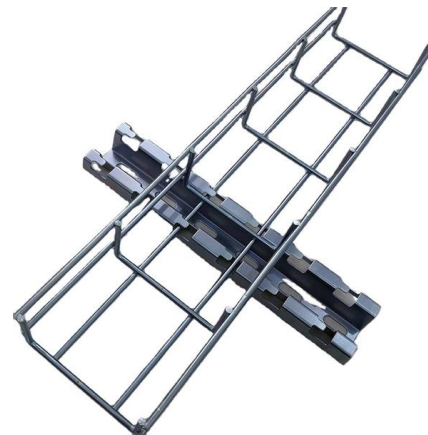
100M/1000M SFP RJ-45 Cat 5/5e 100m 100M/1000M

100M/1000M SFP RJ-45 Cat 5/5e 100m 100M/1000M Electrical Port Module (Industrial Grade Optional) GIGALIGHT 16GFC SFP+ CWDM optical transceiver



100M/1000M SFP RJ-45 Cat 5/5e 100m 100M/1000M

GIGALIGHT 16GFC SFP+ CWDM optical transceiver module is used for long-distance interconnection of data center storage area network, conforms to 16G



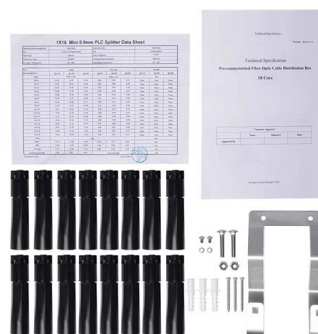
MaxLink SFP 10/100/1000M copper module, RJ-45, 100m, 1Gbps

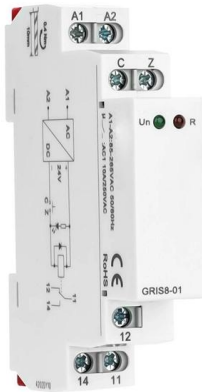
ML-SFP-RJ45-1G is RJ45 SFP 10/100/1000M copper module, compatible with most Gigabit SFP ports available on various networking devices. Maximum distance range is 100m.



1G SFP - Optcore

1G / 1000BASE SFP Optcore's 1000BASE SFP transceiver is suitable for 1G Ethernet and fiber channel applications. Therefore, it is sometimes called 1G SFP



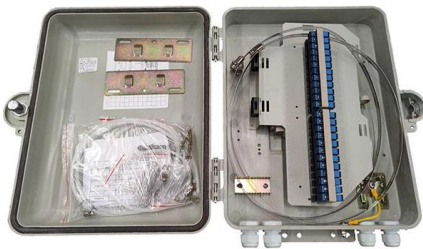


10G SFP+ Optical Transceivers , Transceiver Module

FS 10GbE SFP+ module solutions provide a wide variety of 10 Gigabit Ethernet connectivity options for data centers, enterprise wiring closets, Internet Service

SFP Gigabit Fiber Module

Our 1000Base-LX LC singlemode 1310nm SFP gigabit fiber modules are able to reach a maximum distance of 10 kilometers.



100Base/1000Base SFP Transceiver Modules , FiberMall

FiberMall SFP Fiber & Copper Module features up to 160km transmission over multi-mode and single-mode fiber from speeds of Fast Ethernet to Gigabit Ethernet.

10/100/1000Base-T RJ45 to 1000Base-FX SFP Fiber

10/100/1000Base-T RJ45 (100m/328ft) Gigabit Ethernet to 1000Base-FX Open SFP Fiber Media Converter (Distance depending on SFP module)
The MC-GSA11-L is



1000M Media Converter

1000M Media Converter Reach Optics' 1000M series Optic Media Converter is a kind of 1000Mbps intelligent adaptive fast Ethernet media converter can extend the transmission distance of a



1*1000M FX/SFP and 2*10/100/1000M TX (OPT-2202)

The OPT-2202 series comply with IEEE 802.3/ab Gigabit Ethernet standard. It supports two types of media for network connection such as two



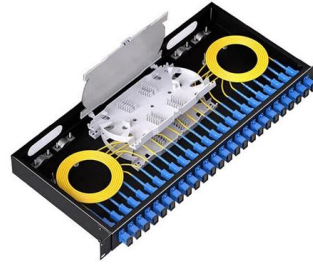
edge optical solution 1000M-SFP-T, RJ-45 SFP

Multi-Vendor, Multi Source Agreement (MSA) kompatibles SFP Modul. Alle edge OPTICAL SOLUTIONS SFPs kommen mit einer 5 jährigen Herstellergarantie auf



10/100/1000M Media Converter Manufacturer

The 10/100/1000M media converters are designed to transmit and receive data over optical fiber. The electrical interface will Auto-Negotiate to a 10Mbps, or 100Mbps or 1000M Ethernet rate without any



MSA Uncoded SFP Module

MSA Uncoded SFP Module - 1000BASE-LX - 1GbE Single Mode Fiber (SMF) Optic Transceiver - 1GE Gigabit Ethernet SFP - LC 10km - 1310nm - DDM
Learn why IT Pros trust StarTech for

10/100/1000BASE-T Copper SFP , RJ45 100m , EDGEOPTIC , EDGE Optical

EDGEOPTIC 10/100/1000BASE-T Copper SFP: tri-speed auto-negotiation 10M-1G, up to 100m Cat5/Cat6, RJ45 interface, 0-70°C. Hot-pluggable module.



Contact Us

For datasheets, pricing, or custom telecom energy solutions, please visit:
<https://koskolong.co.za>