



**Adam Tas Corridor Energy**

# **10kV busbar wiring**





## 10kV busbar wiring

---

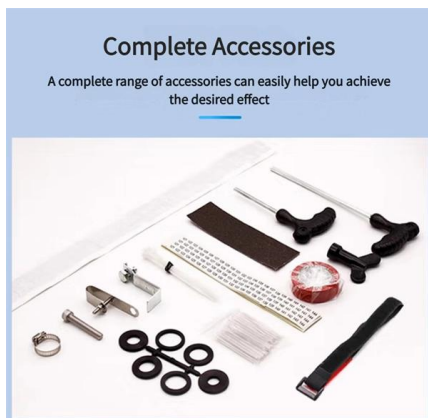


### Different Bus-Bar Schemes in Electrical Substations -

So let's start with different bus-bar schemes or systems in an electrical substation.

### Busbar Design Guide

If this program recommends sizes that do not fit into the ranges below, change either the number of conductors or the section thickness of the busbar and recalculate the minimum cost solution



### Busbar 101

While compliance and safety are major players in the move to busbar power, the need to optimize the use of space inside an industrial enclosure and the demand for faster, more efficient configuration

### Circuit configurations (single line diagrams) for HV and MV

PDF file



## unibar M Busbar Trunking System Manual - assets.hager

This System Manual is intended for users of Hager's unibar M Busbar Trunking System: Planners, manufacturers, operators and users of power switchgear and controlgear assemblies according to



### 10kV Flame-Retardant Busbar Sleeve , Heat Shrink Insulating Tubing

High-performance 10,000 Volts Busbar Sleeve with flame-retardant, halogen-free polyolefin. Provides superior electrical insulation, shrink ratio 2:1, UL & RoHS compliant. Ideal for low-voltage protection



### Catalog LV 10 10/2017, chapter 17

The busbar trunking system for power distribution in the skilled trades and business: High degree of protection up to IP55 Flexible power supply Easy and quick planning Time-saving mounting Reliable



### unibar M Busbar Trunking System Manual

This System Manual is intended for users of Hager's unibar M Busbar Trunking System: Planners, manufacturers, operators and users of power switchgear and controlgear assemblies according to





## Busbar Design Guide

Typical Busbar Sizes If this program recommends sizes that do not fit into the ranges below, change either the number of conductors or the section thickness of the busbar and recalculate the minimum



## What is a Busbar? A Detailed Guide

A busbar is a metallic strip or bar used in electrical power distribution. Gain insight to protect your facility through proper power distribution knowledge.

## Catalogue SIMABUS-EPP-2829-8-16 rev2-HD

TE Connectivity's (TE) Simel first generation connectors have been created back in 1946. The primary activity at this time was the development of Power connectors to deliver connectivity solutions to the



## Flexible Busbar Solution for High Current Density Applications

Other common problems that also exist with rigid busbar systems can exist including poor installation, loose, missing or inappropriate hardware, and poor system design The provision of the flexible bus

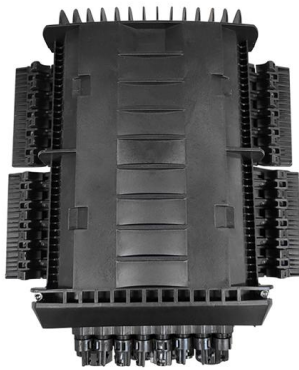


50KW modular power converter



## Busbar supports

Busbar supports Busbar Busbar supports with fixed interphase Busbar supports with adjustable interphase Insulators Function Characteristics SOCOMEC insulating busbar supports allow the



## Design Guide for bus bars

Bus bars use many different types of adhesive-coated insulation materials to permit structure layers to be laminated together. There are added benefits from an

## P-BA-0000211\_mIHVZ\_V11

1 Low-voltage compartment 2 SIPROTEC bay controller (option) 3 Operating mechanism for three-position disconnecter 4 Gas pressure manometer for switchpanel pole housing 5 Gas filling



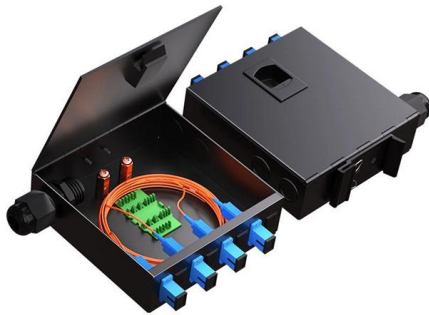


## Flexible Busbar Solution for High Current Density Applications

As showed in Figure 4, when the cross sectional area is smaller than 150 mm<sup>2</sup>, there are small ampacity differences between cable and busbar; but when the cross sectional area is larger than 150 mm<sup>2</sup>,

## Busbars and Connectors in HV and EHV installations

Busbars and Connectors in Indoor & Outdoor Installations What is Electric Busbar? A conductor or group of conductor used to collect the power from incoming feeders



## How to Wire a Busbar for Safe Power Distribution

Master the critical steps--from tool selection and safety checks to proper crimping and torque--for wiring any electrical busbar safely.

## Evolution of 110 kV Substation Power Supply Side Bus

This configuration involved three transformers. Power was supplied through two "side busbars" from the same-direction dual-power 110 kV buses of a single 220 kV



### Busbar Size Calculator (IEC & NEC Compliant)

Calculate the correct busbar size using current (A) or power (kW). Features standard sizing, plus full IEC 61439 & NEC compliant verification for copper and aluminum busbars.



### GIS NXPLUS Catalogue EN

Instrument transformers Can be removed without altering the position of the busbar and circuit-breaker modules (outside the gas compartments) Current transformers not subjected to dielectric stress Easy



### Busbar Processing & Installation: Your Ultimate Guide

Ever wondered how busbars, the unsung heroes of electrical distribution, are processed and installed? This article delves into the intricate





## Catalog LV 10 10/2017, chapter 17

In most applications these requirements are easily met by the use of suitable busbar trunking systems. For this reason, busbar trunking systems rather than the cable installation method are being used



### Types 8DA10 and 8DB10 up to 40.5 kV

All high-voltage parts including the cable terminations, busbars and voltage transformers are metal-enclosed. Capacitive voltage detecting system to verify safe isolation from supply. Operation is only

## Bus Bar : Different Types, Advantages & Disadvantages

This Article Discusses an Overview of What is a Bus Bar, Different Types like Single, Main & transfer, Double, Advantages and Disadvantages



### Step-by-Step Busbar Installation Guide , Artizono

Busbars are the unsung heroes of electrical panels, ensuring reliable power distribution and minimizing clutter. If you've ever wondered how to achieve



## Technical Brochure Enclosure o Busbar Chamber System (BBS) o

Technical Specification ABB "BBS Busbar Chamber Systems" is made of 1.5mm or 2mm steel plate finished with impact-resistant stove textured grey epoxy powder coating to RAL7032 (standard) or



## 110 kV Substations: Power Grid Essentials Explained

The 10 kV side had a single busbar wiring scheme. It often worked with the "same-direction dual power supply" from that time. This setup was easy

## Catalog Extract LV 10 - 04/2023

Take advantage of the benefits of digitalization at every step of the project with the SIVACON 8PS busbar trunking systems - from planning to installation on up to operation. SIMARIS software tools





## What Is a Bus Bar in Electrical Engineering? Full Guide

Discover what a bus bar is in electrical systems, how it works, the different types, materials used, key benefits, and where it's applied. Cover everything you need

## Download Your Ultimate 10KV Busbar Duct Drawing

This drawing provides all the critical dimensions and structural details of the enclosure that houses and protects the copper or aluminum busbars.



## Busbar Design for LV Panels: What Most Engineers Get Wrong

Copper Busbars Copper busbars remain the default for most copper busbar switchgear designs because they combine high conductivity, strong mechanical behavior, good corrosion

## Busbar Insulation Tubing , Single Wall Heat Shrink

WMPG busbar insulation tubing is single wall heat shrink tubing made from cross-linked polyolefin. It is perfect for copper or aluminum busbars in switchgear and



## Contact Us

---

For datasheets, pricing, or custom telecom energy solutions, please visit:  
<https://koskolong.co.za>