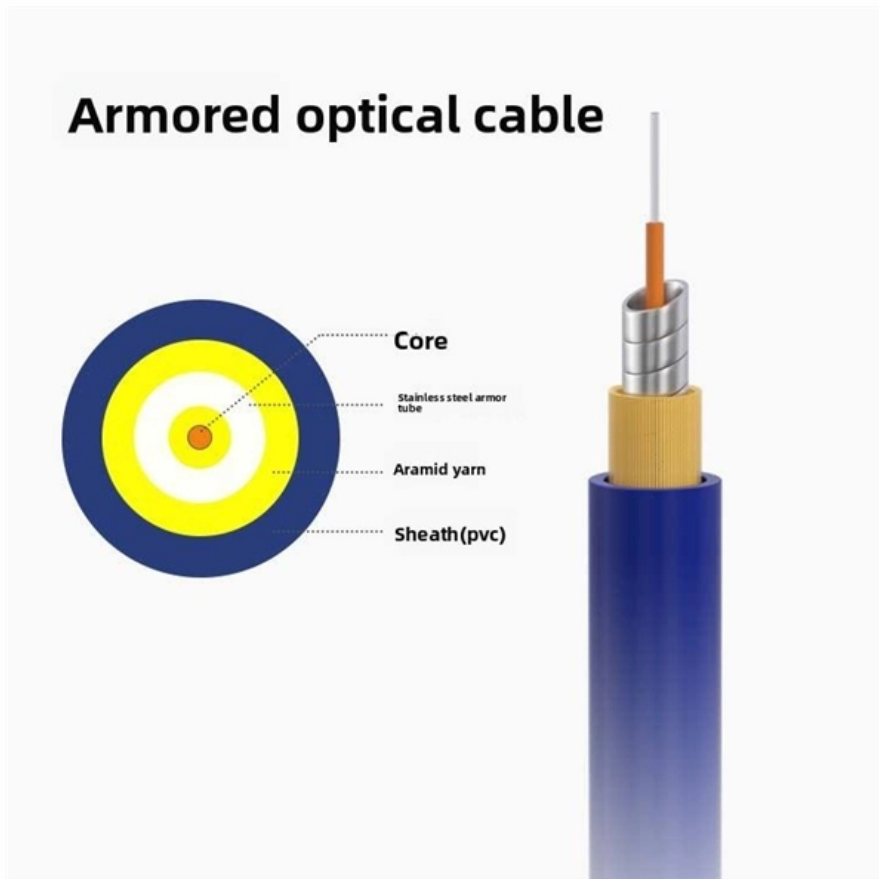




**Adam Tas Corridor Energy**

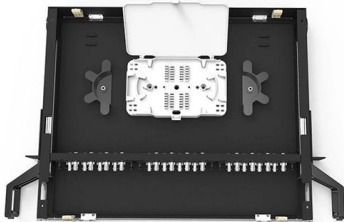
# 12-core Dutch bend-insensitive fiber





## 12-core Dutch bend-insensitive fiber

---



### The FOA Reference For Fiber Optics

A second approach is to leave the core index profile alone but carefully engineer the trench to produce the bend-insensitivity. Today, essentially all MM fiber is bend

### What is a bend-insensitive fiber, and when should it be

Designed to withstand sharp bends and extreme twists without causing substantial signal degradation, this type of fiber is invaluable in a variety of modern



### What is a bend-insensitive fiber, and when should it be

Bend-insensitive fiber is a crucial advancement in the realm of optical fiber technology, providing significant benefits over traditional fibers. Designed to

### What is Bend-Insensitive Fiber?

Bend-insensitive fiber optic cables have become increasingly important in modern telecommunications and networking systems.



These cables



### ClearCurve Single-mode Optical Fibers , Bend

ClearCurve ® ZBL and LBL bend-improved single-mode fibers are cost-effective solutions designed to meet a wide array of applications and deployment



### Dual Band Bend Insensitive Fiber , Fibercore

Dual Band Bend Insensitive Fiber These germanium doped Single-Mode (SM) fibers offer excellent performance in applications where the fiber will be subjected to



### Top 3 Bend-Insensitive Fiber Patch Cable Brands for FTTH (2026)

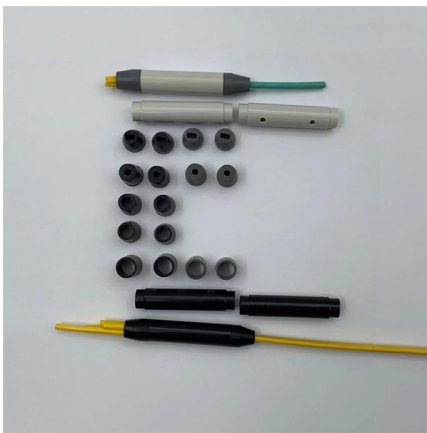
Corning vs CommScope vs Wolon. We compare the best bend-Insensitive Fiber Patch Cable fiber patch cords and reveal the real factory cable cost (just \$0.15/unit).





## Bend Insensitive Fibres , Prysmian

They are the only fibres capable of securing the whole fibre spectrum, especially at the longer wavelengths (1625 nm and above), by minimising losses linked to



## DUAL BAND BEND INSENSITIVE FIBER

Telecoms style bend insensitive fibers with specialty coatings These germanium doped Single-Mode (SM) fibers offer excellent performance in tight space environments and are available with a 9.8mm

## What is Bend-Insensitive Fiber?

But what exactly is bend-insensitive fiber, and why is it a game-changer? This beginner's guide will answer these questions and explore its



## Quiet Technological Changes: An update on bend

Many people take optical fiber for granted. My job requires focusing on finding the changes that might make a difference in the field. Some changes are



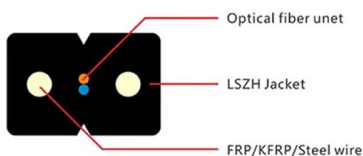
### **ClearCurve Single-mode Optical Fibers , Bend**

ClearCurve bend-insensitive fibers are compliant with ITU-T Recommendations G.652.D and G.657, providing superior installation speed and efficiency, and



### **Bend-Insensitive Fiber - What Is It? - trueCABLE**

Discover the benefits of bend-insensitive fiber for reducing stress and bending loss in optical fiber. Learn about its design, applications, and



### **PM14XXB-XP, Bend Insensitive Panda-Type PM, Optical Fiber**

Optimized for use in the 1400-1500 nm range, these fibers are used in all PM applications for data and telecom. Coherent has applied its unique manufacturing facility and capabilities to this product area





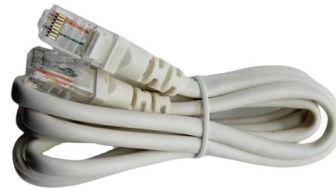
## Understanding Bend-Insensitive Fibre: ITU-G.657

Bend-insensitive fibre (BIF) is designed to mitigate the risks associated with overbending. It incorporates an additional layer of protection around the core,



## Bend Insensitive Optical Fiber , Fibercore

Bend insensitivity can be considered in terms of both the mechanical and optical performance of a fiber. In the case of a mechanically bend insensitive fiber, a reduced cladding such as 80µm or 50µm



## Comparing bend-insensitive singlemode fibers

Currently, there are five primary types of bend-insensitive singlemode fibers available: extreme small core, small core, optimized matched/depressed

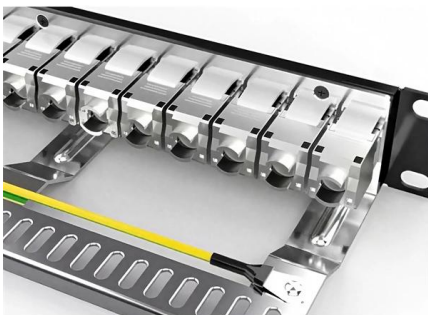
## Bend Insensitive Fibres , Prysmian

Bend-insensitive single mode fibres (ITU-T G.657.A1 and G.657.A2) are a crucial part of the world's shift towards flexible and reliable connectivity. They are the



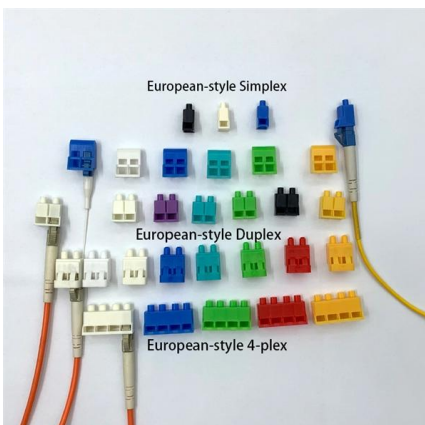
## The FOA Reference For Fiber Optics

Let's examine the design of bend-insensitive multimode fiber (which we will usually call by its acronym BI MMF) that shows the technique. In regular graded index



## 12 Fiber OS2 Bend Insensitive G.657.A1 Loose Tube Single Jacket

About : TeraFlex Bend Resistant G.657.A1 loose tube single mode cable is the product of choice as the backbone in Outside Plant (OSP) environments. Optical fibers and water-blocking elements are



## Bend-Insensitive Fiber: Types, Benefits & Applications

Bend-insensitive fiber has transformed how we deploy and maintain optical networks. By minimizing loss in tight bends, it simplifies installations, reduces costs, and enables new



## **Bend Insensitive Single Mode Fibers , Single Mode**

Bend-insensitive, single-mode sensor grade fibers, available with 820, 1310, and 1550 nm cutoff wavelengths, feature a high NA of 0.16, making them suitable for



## **Bend-Insensitive Fiber: Types, Benefits & Applications**

Learn what bend-insensitive fiber is, its types (single-mode & multimode), benefits, and why it's crucial for modern high-density fiber networks.

## **Contact Us**

---

For datasheets, pricing, or custom telecom energy solutions, please visit:  
<https://koskolong.co.za>