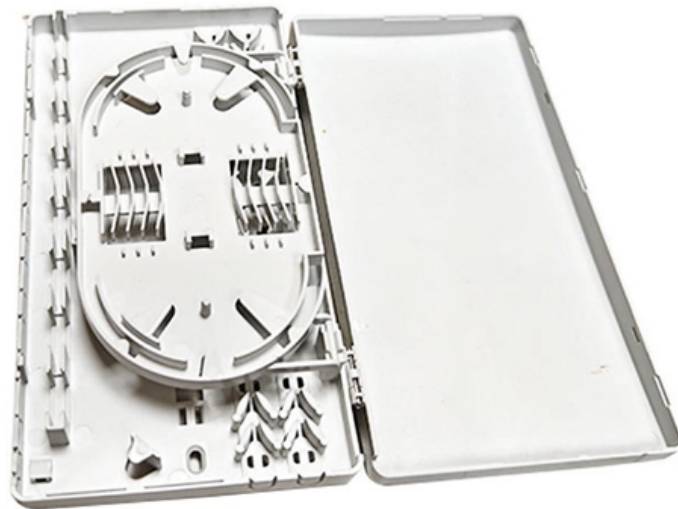




Adam Tas Corridor Energy

12-core fiber optic terminal box connection method





Overview

Thus, a fiber termination box is used to terminate the optical fiber cables in the field and connect them to the pigtail by splicing.



12-core fiber optic terminal box connection method

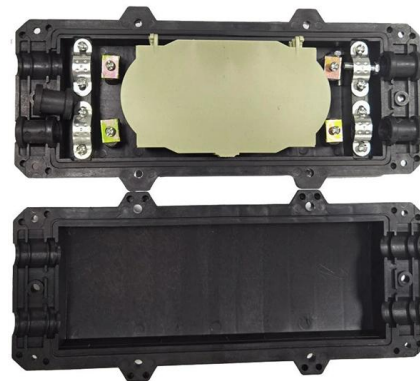


Wiley Online Library , Scientific research articles, journals, books

Hier sollte eine Beschreibung angezeigt werden, diese Seite lässt dies jedoch nicht zu.

Eardion 12 Core Fiber Distribution Box, 12 Port FTTH

12 Core Fiber Distribution Box, 12 Port FTTH Distribution Splitter Box- Fiber Optic Terminal Junction Splitter Case with LC Fiber Cable Coupler Brand: Eardion 5.0 (5) INR10,952



Amazon : Fiber Termination Box

Fiber Optic Terminal Junction Box 2 Ports Fiber Panel Desktop Box for FTTH, Optical SC/UPC Connectors Add to cart 4 Core FTTH Fiber Distribution Box, 4 Port Fiber Distribution Box Splitter

48 Port Fiber Optic Terminal Box, Fiber Optic Patch Panel, SC, FC,

Fibre optic connection box for organising and managing fibre optic Equipped with 48 ports for



efficient connectivity and easy installation
Compatible with SC, FC and LC pigtails for
versatile fiber



Fiber Optic Indoor Termination Box , 12 Fibers 12 Splices 12 Patches

The ITB-258207-12SC-12S-12P provides mechanical protection and managed fiber control in an attractive format suitable for use inside customer premises. A variety of possible fiber termination

12 Cores Fiber Optic Fusion Splicing Terminal Box-ARTIC FIBER

This product is a multifunctional box body that can meet various customer needs through different internal components. The product uses high-quality PC+ABS products with reliable strength, and the



12 Core IP65 ST Fiber Termination Box

The ST Termination Box from Fibconet serves as the perfect junction point to connect feeder cables with drop cables in FTTx communication network systems. It facilitates fiber splicing, splitting, and



12 Cores Fiber Optical Terminal Box Manufacturer

The 12 Cores Fiber Optical Terminal Box serves as a fiber access and termination point between feeder cables and subscriber drop cables. It integrates fiber



12 Port Metal Fiber Optic Terminal Box with FC

Fix the cable-pressing card and the cable, as well as the cable reinforce steel core. Lead the fiber into the melting and connecting tray, fix heat contract

16 Core Outdoor FTTH Fiber Distribution Box IP65 Waterproof Fiber Optic

This 16-core fiber distribution box is a professional outdoor enclosure designed for FTTH/FTTX access networks. Made of high-strength ABS+PC material with IP65 waterproof rating, it integrates fiber



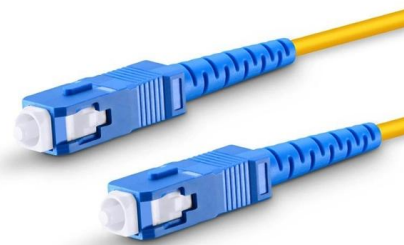
Fiber Optic Termination Box, 12 Splices

The 12 cores plastic fiber optic distribution box provides a protected connection



Ultra Fiber Optic Distribution Box, 12 Core FTTH Terminal Enclosure

[Versatile Fiber Optic Management] This 12-core fttth fiber optic terminal box is designed for seamless integration of incoming and drop cables. it provides efficient splicing winding storage and distribution



32 Port Fiber Distribution Box, 72 Cores Splicing -

The 32 port fiber splitter distribution box comes in three internal structure options, they all can achieve direct and branch connection of optical cable.

Metal 8 Ports Fiber Terminal Box for 8 Core Splice and

Description The 8 ports metal fiber terminal box is similar to the fiber optic patch panel in appearance and function, which designed to connect optical fiber cable





Fodb 12a 12 Core Fiber Optic Terminal Box



FAT-12A Fiber Access Terminal - 12 Cores
Description FAT-12A fiber access termination box is able to hold up to 12 subscribers. It is used as a termination point for the feeder cable to connect with drop

12 cores fiber splice box ftth fiber optic distribution box

A termination box is a distribution box specially designed for the management of fiber cables. Its core use is to terminate fiber optic cables and connect the cable's core



12 cores fiber splice box ftth fiber optic distribution box

Its core use is to terminate fiber optic cables and connect the cable's core and



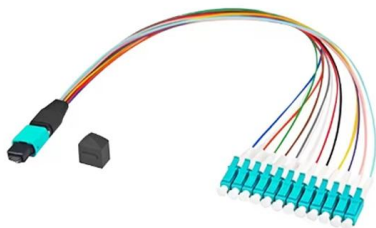
FTTH Distribution Terminal Box, FTTH Fiber Optic

Fiber Optic Termination Box is used in the end termination of drop cables in residential buildings and villas, to fix and splice with pigtails. UnitekFiber supplies



How Many Core In Fiber Optic Cable Do I Need

This is because apart from one-core optical fiber, there are basically no optical cables with an odd number of cores, such as three-core, five-core, etc. It is



4 Core Fiber Termination Box with 12 Outlet Ports -

indoor& outdoor 12 port Fiber Access Terminal Box can hold 2 sc duplex adapter for 4 core termination, allows 8 splice and 1x4 optical signal splitting.



12 Core Fiber Optic Terminal Box

Installation of the fiber optic terminal box: Peel the cable, take off the outer and inner housing, as well as loose contract tube, and wash off the filling grease, leaving 1.1~1.6m fiber and 20~40mm steel core.



Optical ground wire

An optical ground wire (also known as an OPGW or, in the IEEE standard, an optical fiber composite overhead ground wire) is a type of cable that is used in overhead power lines.



Fodb 12a 12 Core Fiber Optic Terminal Box

Suitable for the fusion splice or mechanical splice. 1*8 Splitter can be installed as an option. Efficient cable management. 12 ports cable entrance for drop cable.



Durable 12 Core Fiber Optic Terminal Box Manufacturer , Junpu

Junpu, a professional manufacturer of 12 core fiber optic terminal boxes. FODB-12A model offers weatherproof protection, 12-subscriber capacity & cost-effectiveness for FTTx. Get a quote!



Fiber Optic Junction Box Suppliers, Manufacturer, Distributor

Alibaba offers 659 Fiber Optic Junction Box Suppliers, and Fiber Optic Junction Box Manufacturers, Distributors, Factories, Companies. There are 445 OEM, 396 ODM, 137 Self Patent. Find high quality



6 Core Fiber Distribution Box Fiber Optic Terminal Box FTTH CTO Joint Box

This terminal box terminates up to 12-24 fiber optic cables, offers spaces for splitters and up to 12-24 fusions, allocates 6 x SC Duplex adapters or 6 x LC Quad adapters and working under both indoor



FODB-12A 12 Core Fiber Optic Terminal Box

FODB-12A fiber access termination box is able to hold up to 12 subscribers. It is used as a termination point for the feeder cable to connect with drop cable in



All You Need To Know About Fiber Termination Boxes:

Source Optical fiber terminal boxes can be of many different types: Based on Cable Connection Method Straight-through Terminal Box: This terminal





12 Core Fiber Optic Terminal Box



The 12 core fiber optic terminal box is light in weight and small size, flexible to use in different applications in optical cabling. Installation of the fiber optic terminal box: Peel the cable, take off the

Contact Us

For datasheets, pricing, or custom telecom energy solutions, please visit:
<https://koskolong.co.za>