



**Adam Tas Corridor Energy**

# **15-meter height increase frame for communication towers**





## 15-meter height increase frame for communication towers

---

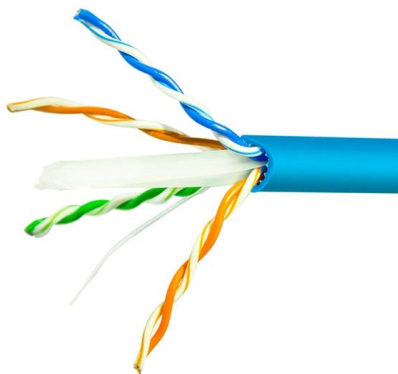


### 15 Meter Monopole Telecommunications Tower Round

The monopole towers are designed for up to four operators without making the

### Analysis and Optimum Design of Self Supporting Steel Communication Tower

Here the cross sections of the bars are equal leg angles. The self supporting communication tower is a large latticed steel structure and it should be analyzed as an indeterminate space structure.



### Telecom tower Requirements\_R2

Ø The height of the towers at Kudagiri, Farukolhufushi and Stelco Hiyaa locations, shall be 35m. Ø The height of the tower at Plot N3-32 shall be 25m. Antenna Mounting Frame Ø Frames for mounting

### Telecommunication Towers

Telecommunication towers, also known as cell towers or cell sites, are structures designed to facilitate wireless communication by providing a



platform for antennas and other equipment used to transmit



### **15M Telecommunication Tower: Robust Network Support**

It has a height of 15 meters, which guarantees optimal signal quality; it is also sturdy and can withstand adverse weather conditions, making it suitable

### **Types of Communication Tower in Telecom**

We support solutions for all types of communication towers. 1. Angular Steel Tower  
1.1 Three-Legged Angular Steel Tower :A cost-effective



### **Communication Tower Design Guidelines , PDF**

It covers foundation design to resist loads, standards for tower design, codes for earthquake resistance, and guidelines on tower construction. The document also



### 15 meter telecom tower

15 meter telecom tower - Durable, high-capacity communication poles for mobile networks. Shop our range of telecom towers & accessories for reliable signal coverage.



### 15M Mono Pole Telecommunication Tower

Discover XH Tower's 15M Mono Pole Telecommunication Tower, a compact,

### STRUCTURAL ANALYSIS AND DESIGN OF

In this thesis, a comprehensive structural analysis and design for a self-supported latticed telecommunication tower is being carried out using three different



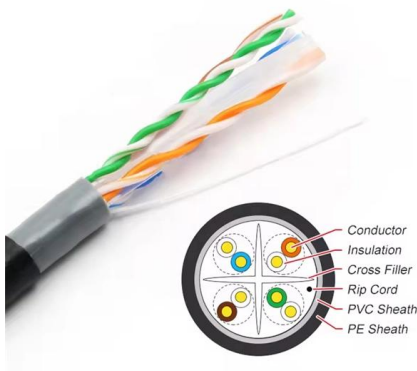
### 15m 20 Meter 36m 300 FT 50m Three Legs

We have contracted to build all kinds of steel structure towers over a thousand in number in recent years. With annual production capacity over 60 thousand tons



## OPTIMIZATION AND DESIGN OF

It was observed that the joint displacements were nearly increased by 65% and 59% when the tower height changes from 30 m to 40 m and from 40 m



## Types of Communication Towers & Their Maintenance Explained

Discover the different types of communication towers, including guyed, monopole, lattice, and stealth towers. Learn how Pittsburg Tank & Tower Group ensures proper design, installation, and

## ANALYSIS AND DESIGN OF COMMUNICATION TOWER USING

The direction and height of tower along with the antennas mounted on it is completely governed by the functional requirements. Communication towers act as vertical trusses and resist wind load by





## Self-Support towers -- CommStructures

When you need a self-sustaining tower solution, look no further. Our self-support towers offer exceptional strength and versatility for a wide range of

## ANALYSIS AND DESIGN OF COMMUNICATION TOWER USING

The maximum story displacement at seismic X direction for a communication tower will depend on several factors, such as the seismic hazard of the location, the structural design and detailing, and

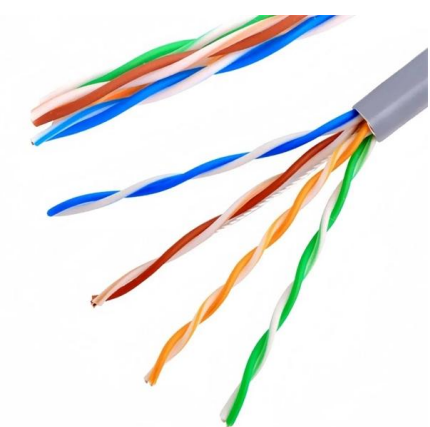


## Parametric comparison of communication towers with

Communication towers are generally pin jointed space frames built of steel sections for holding transmitters and receivers. In addition to self-weight,

## Analysis and Design of a Steel Communication Tower

The purpose of this paper is to analyze and design a steel communications tower using the Etabs program, and calculate the lateral loads



## What Are Communication Towers and How Are They Designed?

Part 1: Purpose of Communication Towers  
Communication towers are tall steel structures used to raise antennas to higher elevations in order to extend service coverage and

## How Tall Is A Communication Tower?

Tower Height Ranges Communication towers can range in height from as low as 50 feet (15 meters) to over 2,000 feet (610 meters). The height of



## Mobile Communication Tower Antenna Poles Towers

High quality Mobile Communication Tower Antenna Poles Towers With 15-60 Meter Height from China, China's leading product market communications towers



## **DRAFT TANZANIA STANDARD Steel towers for communication**

Steel towers for communication services -- Specification 0 Foreword uire supportive infrastructure to enable communication services be delivered. Network facilities including towers and masts are the

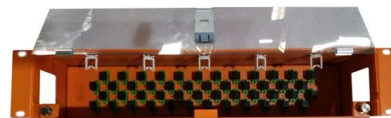


## **Analysis and Design of a Steel Communication Tower**

Based on these obtained values, the safe sections of the tower were designed after making sure that they are within the permissible limits in the British specifications.

## **Height, Guy Wires, and Steady-Burning Lights Increase Hazard of**

Height, Guy Wires, and Steady-Burning Lights Increase Hazard of Communication Towers to Nocturnal Migrants: A Review and Meta-Analysis  
Travis Longcore, Catherine Rich, Sidney A.



## **Mobile Communication Tower Antenna Poles Towers**

The communication tower is composed of steel components such as tower body, platform, lightning rod, ladder, antenna support, etc., and is treated by hot-dip



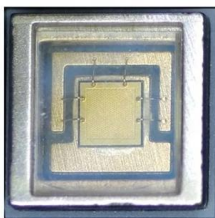
### Self Support Tubular Telecom Tower 15 - 60m Height

We are 15m Height Self Support Tower manufacture and supplier, provide Self Support Tubular Telecom Tower 15 - 60m Height For Signal Transmission on



### Engineering: Radio masts and towers

Radio masts and towers are typically tall structures designed to support antennas for telecommunications and broadcasting, including television.



### 15 meters tower

Types of 15-Meter Towers: Applications and Features A 15-meter tower is a versatile structural solution used across various industries due to its optimal height for visibility, signal transmission, water



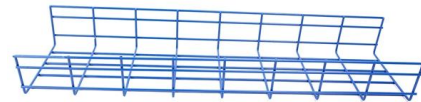


## **Request for Proposal No. 6-15 Communication Towers and Antenna**

The undersigned hereby acknowledges the General Terms and Conditions, Special Provisions and Technical Specifications of Request For Proposal (RFP) 6-15 for Communication Towers and

### **Types of Communication Tower in Telecom**

Recommended for heights over 70 meters or when supporting a large number of antennas. Selection Guide: Use a three-legged tower for



### **Contact Us**

---

For datasheets, pricing, or custom telecom energy solutions, please visit:  
<https://koskolong.co.za>