



Adam Tas Corridor Energy

16-core optical cable model





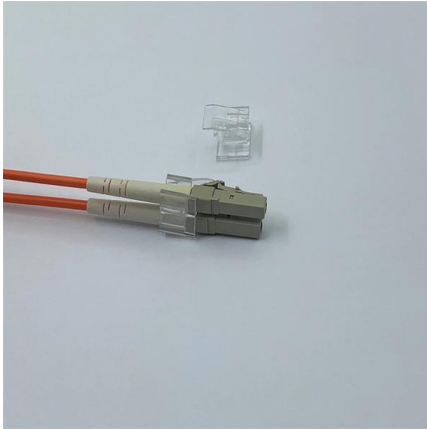
Overview

The MTP®/MPO-16 Fiber connector is a high-density fiber optic connector that supports 16 fibers within a single connector, offering a significant increase in fiber count compared to traditional 8 or 12-fiber connectors. To prevent accidental connections with standard MPO hardware, the MTP®/MPO-16. cluster networks, high-performance computing (HPC) and switch interconnection scenarios. This series uses high-density MTP/MPO convenient installation, and stable performance. Excel OM4 50/125 µm loose tube optical fibre cables have been designed specifically for internal and external applications. Delivering high performance, reliability, and scalability, the Base-16 Fiber Cabling System consists of 16 fibers per jacket that are either discrete/loose tube or ribbonized in nature and can terminate with MPO or multiple duplex LC connectors. 16 Core OM4 50/125 LT Fibre Cable (metre)

The CMW lightweight range of Multi Loose Tube Internal/External distribution cables is constructed to meet all LAN, Enterprise or Telecom requirements with flexible, easy to install and robust proven design. UV curable acrylate material is applied over fibre cladding as optical fibre primary protective coating.



16-core optical cable model



16 Cores GYTS Fiber Optic Cable Stranded Steel Tape

16 Core GYTS Fiber Optic Cable is the outdoor fiber optic cable type used for duct and aerial applications. We supply single mode GYTS fiber optical cable and

72 Core Inline Fiber Optic Splice Closure Use as Optical

This 72 core inline fiber splice closure can be used as fiber optic distribution box that designed for optical splitting, fiber splicing, cable joint, termination and



MPO 16 Cables 2024: Redefining High-Density Connectivity for AI

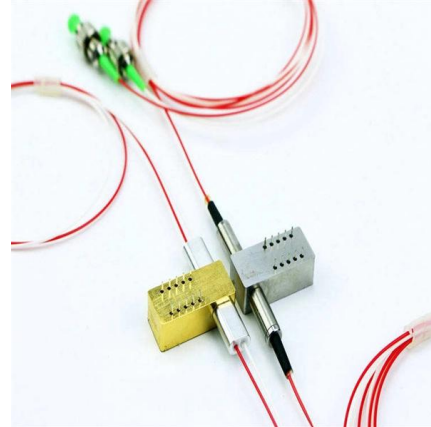
MPO 16 Cables 2024: Redefining High-Density Connectivity for AI Clusters and 5G-Advanced Networks Introduction In the relentless pursuit of bandwidth density, MPO 16 cables have

MTP / MPO 16F & 32F Solutions

Optec provides the industry-leading density 16-core MTP/MPO fiber assemblies to support 400G transmission. The assemblies are offered in



single row 16-fiber and



NanoCore® Base-8 and Base-16 Micro Distribution

Base-8 and Base-16 fiber optic cables have 8 or 16 fibers per subunit, allowing 100% fiber utilization for parallel optics applications that support 40GbE, 100GbE,



16 Cores Revolutionizing the Cable Industry_NEWS_OPTICAL FIBER CABLE

The structure of 16 cores refers to the arrangement and organization of individual optical fibers within a cable. In a 16-core cable, there are sixteen separate optical fibers that are bundled together in a



Base 16 Fiber Cable Application Guide

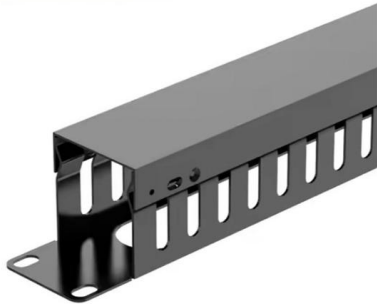
Base-16 optical trunks consist of sixteen fibers per jacket, that are either discrete/loose tube or ribbonized in nature and can terminate with MPO or multiple duplex LC connectors.





MTP/MPO Cable Selection Guide for Different Core Numbers

Choosing the right MTP/MPO cable ensures efficient and reliable data transmission in today's fast-paced digital world. With the increasing demand for high-speed connectivity, it is



MPO 16 Cable: Powering Tomorrow's Connectivity Across Industries

The MPO 16 Cable--a 16-fiber multi-fiber push-on (MPO) connectorized cable--has emerged as a game-changer in industries demanding uncompromising speed, density, and reliability.

GYXTW Single-Mode Fiber Optic Cable 2/4/6/8/12/16/24 Core

GYXTW Single-Mode Fiber Optic Cable 2/4/6/8/12/16/24 Core Outdoor Aerial/Duct for Power Station SCADA & Weak Current Systems



Indoor, Tight Buffered fibre Cable, OM3, 16 Core

The optical fibre is made of high pure silica and germanium doped silica. UV curable acrylate material is applied over fibre cladding as optical fibre primary protective coating. The detail data of optical fibre



Enbeam OM4 Multimode Fibre Optic Cable Loose Tube 16 Core

Product Overview Enbeam OM4 multimode fibre optic cable loose tube 16 core 50/125 LSOH Dca black, part of a huge range of OM4 fibre optic cables fully stocked at Mayflex. Excel OM4 50/125 mm loose



MarketsandMarkets

Revenue Impact Firm - MarketsandMarkets offers market research reports and quantified B2B research on 30000 high growth emerging opportunities to over 10000 clients worldwide. Get detailed insights

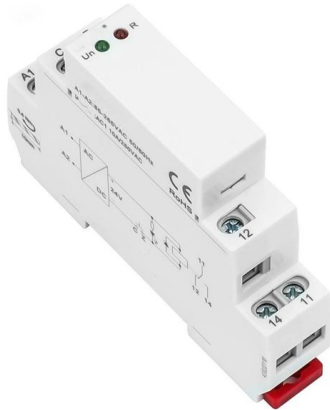
What is MTP®/MPO 16 Fiber Optic Cable?

The MTP®/MPO-16 Fiber connector is a high-density fiber optic connector that supports 16 fibers within a single connector, offering a significant increase in fiber count compared to



MTP/MPO -16 Fibers Cable Datasheet

This series uses high-density MTP/MPO 16-core connectors, supports up to 16 channels of high-speed data transmission, and has the characteristics of simple wiring, convenient installation, and stable



16 Core OM4 50/125 LT Fibre Cable (metre), Fibre Optic Cable , CMW

16 Core OM4 50/125 LT Fibre Cable - Cable Management Warehouse, CMW Ltd Optical fibre cables have been designed for internal and external applications.

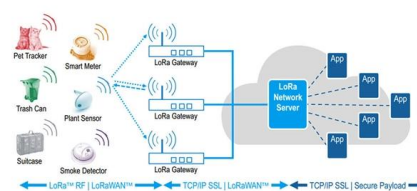


Outdoor GYXTW Fiber Optic Cable 2-24 Core (2/4/6/8/12/16) Single

Outdoor GYXTW Fiber Optic Cable 2-24 Core (2/4/6/8/12/16) Single-Mode Ideal for FTTB Building & Parking Lot

Deliver Unparalleled Speed with Base-16 Fiber

Delivering high performance, reliability, and scalability, the Base-16 Fiber Cabling System consists of 16 fibers per jacket that are either discrete/loose tube or





Base-16 Fiber Cabling System Application Guide

Base-16 optical trunks consist of 16 fibers per jacket, that are either discrete/loose tube or ribbonized in nature and can terminate with MPO or multiple duplex LC connectors. These Base-16 cables, either

Enbeam OM4 Multimode Fibre Optic Cable Loose Tube 16 Core

These compact, lightweight cables are extremely flexible and are quick and easy to install. The cables are constructed around a gel filled (non-dripping and silicon free) tube containing up to 24 colour



16 Core OM4 50/125 LT Fibre Cable (metre), Fibre Optic Cable , CMW

These Optical fibre cables meet both Internal and External Environmental and flame-retardant industry standards with 48F-288F cabling options. The simple mechanical construction of the Loose tube

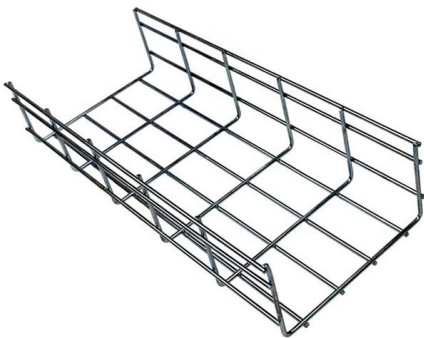
16 cores fiber optic cable SM OS2, CCA category, Excel Networking

Excel 16F OS2 9/125mm tight buffered optical fibre cables have been designed specifically for internal and external applications. The singlemode fibre is G.652.D compliant low water peak grade and



Unlock the power of 16-core OM4 MPO Fiber Optic Cables

MTP MPO fiber optic cable 16 core OM4 is a purpose built solution for direct 400G and 800G optical connectivity in Hyperscale Data Centers.



Single-Mode GYXTW Outdoor Fiber Optic Cable 2/4/6/8/12/16/24 Core

Single-Mode GYXTW Outdoor Fiber Optic Cable 2/4/6/8/12/16/24 Core Steel-Reinforced for Industrial Park & School Campus



MTP / MPO 16F & 32F Solutions

Optec provides the industry-leading density 16-core MTP/MPO fiber assemblies to support 400G transmission. The assemblies are offered in single row 16-fiber and 32-fiber (2x16) configurations to



Base 16 Fiber Cable Application Guide

This 16-fiber lane count aligns 400GbE and 800GbE parallel optics data transmission methods. The Base-16 MPO-16 connector is TIA-604-18 (FOCIS18) compliant. Panduit's Base-16 offering will



MTP/MPO -16 Fibers Cable Datasheet

MTP/MPO -16 Fibers Cable Datasheet
MTP/MPO-16 Fibers Cable Introduction The MTP/MPO 16-core fiber patch cord series is designed to meet the high-speed interconnection requirements of the new

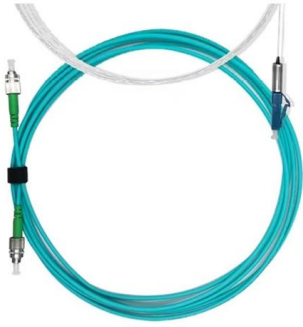
What is MPO / MTP 16 Connector Fibers Optic Cable?

16 core MPO / MTP fiber Optic Cable is a new type of fiber assemblies to support 400G transmission, the basic MPO trunking systems are



MTP 16F and 32F Cable / Fiberwe Technologies Co., Ltd.

Fiberwe provide the industry-leading density 16-core MTP/MPO fiber assemblies to support 400G transmission. The assemblies are offered in single row 16-fiber and 32-fiber (2x16) configurations to



Contact Us

For datasheets, pricing, or custom telecom energy solutions, please visit:
<https://koskolong.co.za>