



Adam Tas Corridor Energy

160 Relay Protection





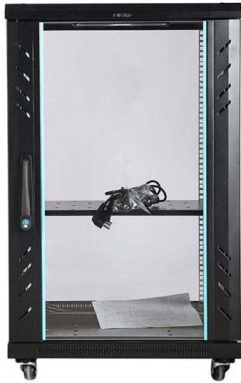
Overview

It provides overload and unbalance protection, as well as undercurrent protection with reconnection inhibit function. This relay features a numerical display for setting values, measured values, and memorized. Do you have a question about the SPAJ 160 C and is the answer not in the manual?

Page 1 SPAJ 160 C Capacitor protection relay User's manual and Technical description $I > \Delta I < \Delta = 1A$ $n = 50Hz$ $5A$ ($\Delta 60Hz$ SPAJ 160 C 80. The GRE160 is a fully numerical multi-function transformer protection device designed for two-winding transformer protection applications, drawing on proven technologies developed over more than 100 years, and providing a comprehensive range of protection and control functions.



160 Relay Protection



PowerLogic SC160 CT-LPVT/VT, MV switchgear controller unit

The PowerLogic SC160 module offers many high-performance features needed to perform MV switchgear protection and monitoring. It is designed for clip in DIN rail.

Transformer Protection GRE160:Protection relay

The GRE160 is a fully numerical multi-function transformer protection device designed for two-winding transformer protection applications, drawing on proven



ABB SPAJ 160 C-AA capacitor protection relay

The ABB SPAJ 160 C-AA REV-A is a numerical capacitor protection relay from ABB's SPACOM product family, specifically designed to safeguard capacitor banks in medium-voltage



Power System Protective Relays: Principles & Practices

Protective relays and devices have been developed over 100 years ago to provide



"lastline"of defense for the electrical systems. They are intended to quickly identify a fault and isolate it so the balance of



SPAJ 160 C Capacitor protection relay

The protective relay is a multifunction type of relay and includes functions for overload protection, unbalance protection and undercurrent protection combined with reconnection inhibit to prevent



Catalogue No: NEF-160-24VAC

OVERLOAD ELECTRONIC 33-160A 24V AC CONTROL Motor Control and Drives > Motor Starting and Protection > Motor Protection > NHP Motor Protection Relays > NHP Protek Electronic Motor



Untitled Document [library.e.abb]

All these functions are incorporated in the capacitor protection relay. complete protection system for capacitor banks should also include overcurrent, short circuit and earth-fault protection.



SPAJ 160 C User's Manual and Technical Description , Manualzz

SPAJ 160 C is a multifunction relay for protecting capacitor banks. It provides overload and unbalance protection, as well as undercurrent protection with reconnection inhibit function.



SPAJ 160 C Capacitor Protection Relay , PDF , Power

This document provides information on the SPAJ 160 C capacitor protection relay, including: 1) The relay protects capacitor banks from overloads, unbalances,

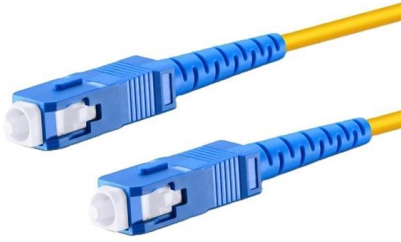
Capacitor Protection Relay

All these functions are incorporated in the capacitor protection relay. A complete protection system for capacitor banks should also include overcurrent, short circuit and earth-fault



NHP Motor Protection Relay

Retrofitting solutions providing protection integral to the mining industry NHP is proud to bring to market the NHP Protek NEF series of 1000V AC electronic motor protection relays, ideally suited for mining



Protective Relay Basics

Traditionally, protective relays were electromechanical devices utilizing induction disk, coils, contacts, and solenoid elements to determine protective characteristics.



ABB SPAJ 160 C RELAY USER MANUAL AND

View and Download ABB SPAJ 160 C user manual and technical description online. Capacitor protection relay. SPAJ 160 C relays pdf manual download.

SPAJ 160 C-FA , ABB

SPAJ 160 C Capacitor bank protection relay,
Product Guide Summary: No summary available
Product guide - English - 2006-05-22 -
0,49 MB Stabilizing Resistor in Motor Earth-Fault
Protection,



Voltage protection and control REU615 IEC

REU615 is a voltage protection and control IED, perfectly aligned for voltage- and frequency-based protection. REU615 is also ideal for voltage regulation.



Voltage protection and control

Voltage protection is the most basic protection in a power grid. The objective of a protection scheme is to keep the power system stable

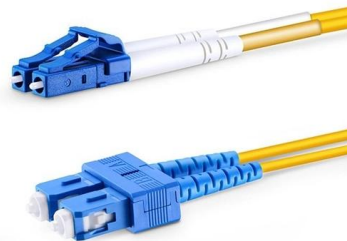


ABB SPAJ 160C Protection Relay with SPCJ 4D40

The ABB SPAJ 160C Protection Relay combined with the SPCJ 4D40 accessory is a reliable and precise solution for electrical system protection. Designed to safeguard transformers,



Catalogue No: NEF-160-24VAC OVERLOAD ELECTRONIC 33-160A

NEF-160-24VAC OVERLOAD ELECTRONIC
33-160A 24V AC CONTROL Motor Control and
Drives > Motor Starting and Protection > Motor
Protection > NHP Motor Protection Relays >



SPAJ160C_EN_D

The protective relay is a multifunction type of relay and includes functions for overload protection, unbalance protection and undercurrent protection combined with reconnection inhibit to prevent



SPAJ 160 C-FA , ABB

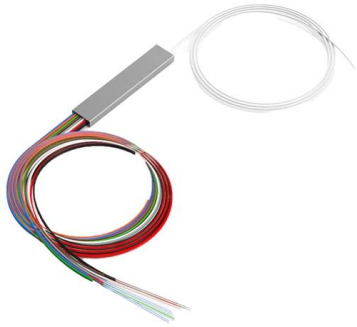
This page contains technical data sheet, documents library and links to offering related to this product. If you require any other information, please contact us using form located at the bottom of the page.





Untitled Document [library.e.abb]

All these functions are incorporated in the capacitor protection relay. A complete protection system for capacitor banks should also include overcurrent, short circuit and earth-fault protection. The capaci



Transformer Protection Relay GRE160 Brochure 12027-1 0

Transformer Protection Relay GRE160 Brochure
12027-1 0 - Free download as PDF File (.pdf),
Text File (.txt) or read online for free.
Transformer Protection Relay



Contact Us

For datasheets, pricing, or custom telecom energy solutions, please visit:
<https://koskolong.co.za>