



**Adam Tas Corridor Energy**

# 1940 Laser Diode





## Overview

---

The LRD-1940 Series of Collimated Diode (Semiconductor) Lasers are ideal for applications requiring a wavelength of around 1940 nm and a wide range of output power levels from 100 mW to 800 mW with a high level of long-term output power stability and long operating lifetime at an. Central wavelength 1940nm, Output power 2mW, Narrow Linewidth < 2MHz, Tolerance  $\pm 1$ nm, PM Fiber, FC/APC The PL-DFB-1940-A-A81 1940nm DFB laser diode module made by LD-PD is a cost effective, highly coherent laser source. The Lumics LuOcean Mini 8 diode laser series offers OEM integrators an excellent product to manufacture state-of-the-art end-user laser systems. The easy integration and safe use of these laser components in combination with several accessories and features give the chance to be cost-efficient in. Frankfurt Laser Company (FLC), established in 1994, is a prominent global supplier of laser technologies. We are excited to enable our medical systems customers to develop higher power systems that improve recovery times and minimize swelling and scarring.



## 1940 Laser Diode

---

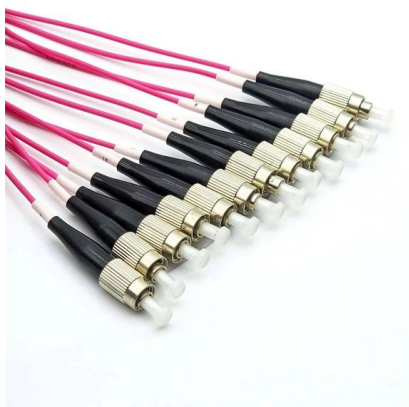


### Features

Thermal Parameters Operating Temperature<sup>2, 3, 4</sup> (Cooling Plate) Operating Temperature<sup>2, 3, 4</sup> (Diode Laser Module) Storage Temperature<sup>3,4</sup> Coolant Flow Rate Operating Water Temperature Maximum

### 1940nm, Multi-Emitter Laser Diode in Pre-Configured

These 1940nm, 10 Watt source and control systems offer a complete plug and play solution for R& D laboratory applications. These units includes a COHERENT /



### High-Brightness 1940 nm Gallium Antimonide Diode

In this paper, we present a beam-combining technique to boost GaSb-based 1940 nm diode laser output power through spectral beam combining

### 1940NM LASER DIODES

Many transparent plastics share similarities; these plastics can be absorbed adequately by laser light in the 1940-2400nm range permitting



### **LU1940D140 Datasheet (PDF)**

Part #: LU1940D140. Download. File Size: 639Kbytes. Page: 2 Pages. Description: Diode Laser @ 1940 nm up to 14 W. Manufacturer: Lumics GmbH.



### **10W Laser Diode from DILAS, 1940nm**

1940nm, 10W Laser Diode from DILAS: DILAS is now part of Coherent Inc. Please visit Coherent to get the most up to date product information. This laser



### **High Power 1470nm + 1940nm Laser Diode**

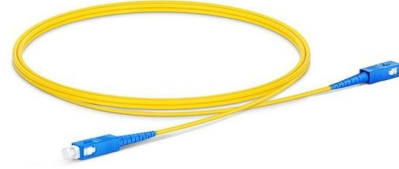
1470nm Laser Diode, 10W Output Power, Detachable Multimode Fiber Output SKU: LLS-0163 Lead time: Request quote for ship date





## SINGLE BAR

SINGLE BAR 1940 nm, 10 W, Conduction-Cooled, CW Conduction-cooled single bars are well introduced in the market and are an industry standard in terms of size and footprint.



## FCLD-1940-15S-BTF

Additionally, they offer superior beam quality, enhanced safety, and effective thermal management, making them a reliable and versatile choice for a wide range of applications. Laser Type: Laser

## Lu1940D060-U\_20181126.FH10

LuOcean Mini 4 LU1940D060 Diode Laser up to 6 W @ 1940 nm Description: The Lumics LuOcean Mini 4 diode laser series offers OEM integrators an excellent product to manufacture state-of-the-art end



## 1940nm Laser Diodes

All Brands on One Site, Compare Specifications and Get Pricing for 1742nm Laser Diodes, Unbiased SELECTION GUIDE, Research All of Your Choices and Select the Best



### 1940nm Laser Diode ( 18 WATTS )

1940nm Laser Diode, 18W Output Power,  
Detachable Multimode Fiber Output SKU:  
LLS-0101 Lead time: Request quote for ship date



### Arktis Laser , Scientific Lasers , Arktis Laser

The LRS-1940 Series of Diode-Pumped Solid-State (DPSS) Lasers are ideal for applications requiring 10 mW to 500 mW of 1940 nm laser light with a high level of long-term output power stability and

### 1940 nm Conduction-Cooled Single Bars

4A non-condensing environment is required for storage and operation below the ambient dew point. 5For fast-axis collimation using FAC lens: divergence <8mrad.



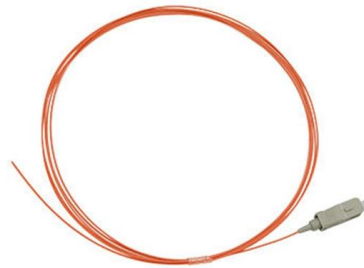


### **FCLD-1940-15S-BTF**

They offer a wide range of laser diodes, including FP, DFB, and DBR types, covering wavelengths from 213 nm to 20  $\mu\text{m}$  and power ranges from 1 mW to 5600 W. Known for their innovative solutions, FLC

## **Diode Lasers**

1940nm, 400 $\mu\text{m}$ , Conduction-Cooled, Single Bar, Fiber-Coupled Module.



### **Lu1940D070-U\_20201104.FH10**

Lumics laser diode fiber coupling technology ensures loss into the fiber cladding of  $<15/(7)\%$ (19xxnm for fiber core  $\geq 200(400)\mu\text{m}$ ) of the total power if the fiber centricity (typically  $\leq 10\mu\text{m}$ ), ferrule diameter

### **Lu1940D140-E\_20201110.FH10**

LuOcean Mini 8 Diode Laser @ 1940 nm up to 14 W Description: The Lumics LuOcean Mini 8 diode laser series offers OEM integrators an excellent product to manufacture state-of-the-art end-user



### 1940 nm Collimated Diode Laser System

The LRD-1940 Series of Collimated Diode (Semiconductor) Lasers are ideal for applications requiring a wavelength of around 1940 nm and a wide range of



### 1940nm DFB PM Laser diode-LD-PD PTE. LTD.

The PL-DFB-1940-A-A81 1940nm DFB laser diode module made by LD-PD is a cost effective, highly coherent laser source. The DFB laser diode chip is packaged in an industry standard hermetically



### 1940nm Laser Diode

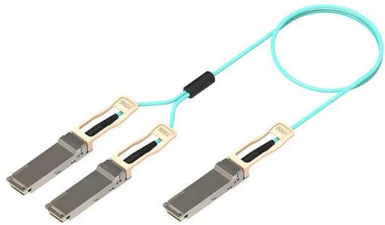
1940nm Laser Diode Features High output power of 15W 200mm/0.22NA multimode optical fiber Center wavelength  $1940 \pm 10$ nm Applications Medical Application





### **1940-nm Diode Laser , Candela**

A prospective study evaluated treatment with the 1940 nm fractional diode laser (Nordlys® system) for improvement of skin pigmentation and texture.



### **1940 nm Conduction-Cooled Single Bars**

VISIBLE AND INVISIBLE LASER RADIATION. AVOID EYE OR SKIN EXPOSURE TO DIRECT OR SCATTERED RADIATION! CLASS 4 LASER PRODUCT. All rights reserved. DILAS reserves the

### **1940 nm, 30 W, Multi-Bar Laser Module from DILAS**

1940nm, 30 Watt, Fiber-Coupled Laser Diode Module from DILAS: DILAS is now part of Coherent Inc. Please visit Coherent to get the most up to date product



### **linos:1940 Diode laser , intros Discover products**

The linos:1940 diode laser from intros (vein laser) consumes less energy and ensures the best results thanks to its longer wavelength.



### 1940nm Laser Diodes

GaSb laser diodes produced in the 2µm range find use in industrial applications such as the welding of transparent plastics. GaSb laser welders allow the welding of



### 1940 nm non-ablative fractional diode laser for skin resurfacing and

The 1940 nm non-ablative fractional laser is FDA-cleared for treatment of benign pigmented lesions.

### 1940 nm diode-laser arrays

DILAS (Mainz, Germany) has introduced the only commercially available high-power diode laser arrays operating at 1940nm with wall plug efficiencies of >10%.





## Contact Us

---

For datasheets, pricing, or custom telecom energy solutions, please visit:  
<https://koskolong.co.za>