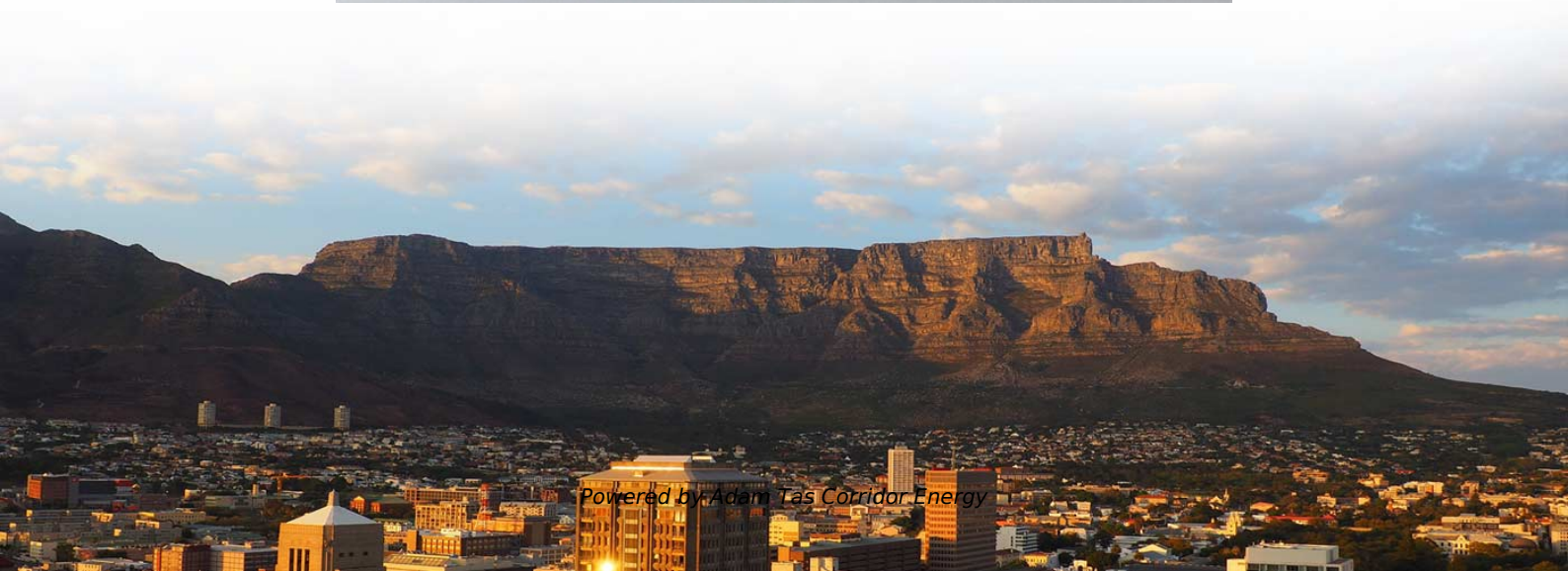
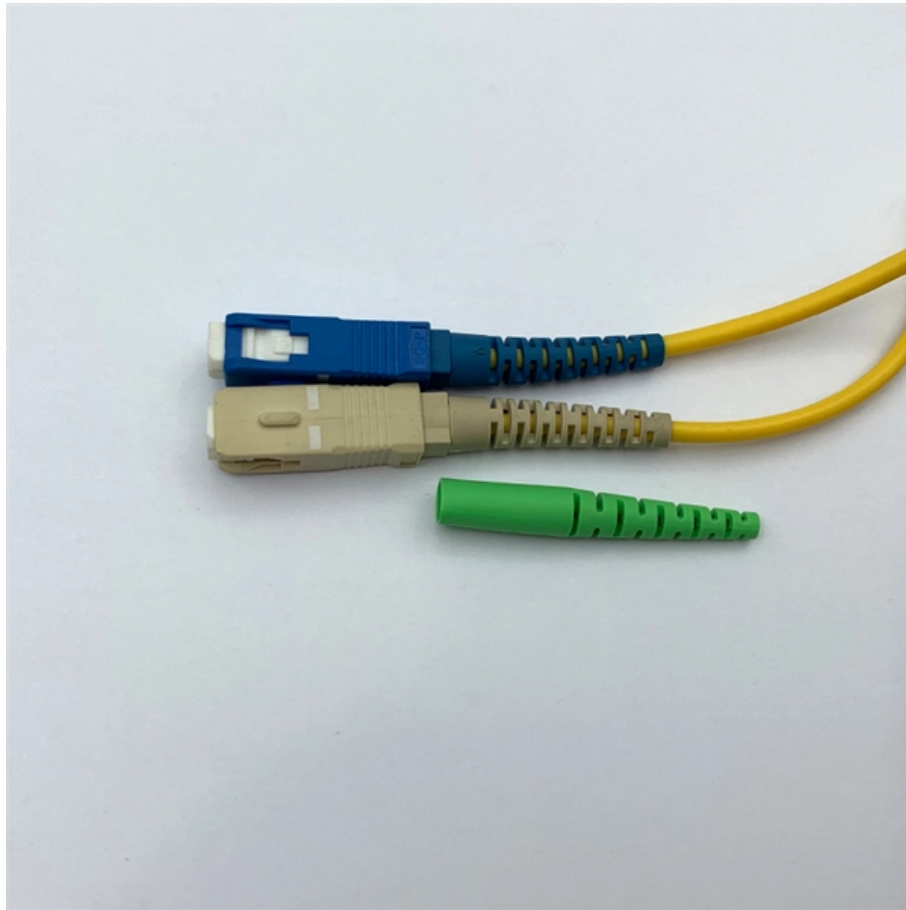




Adam Tas Corridor Energy

24-core fully equipped optical cable terminal box splicing





Overview

The 24 Cores Termination Box is a reliable and cost-effective solution for fiber optic cable splicing and termination. The equipment is used as a termination point for the feeder cable to connect with drop cable in FTTX communication network system. The fiber splicing, splitting, distribution can be done in this box, and meanwhile it provides solid protection and management for the FTTX network building.



24-core fully equipped optical cable terminal box splicing

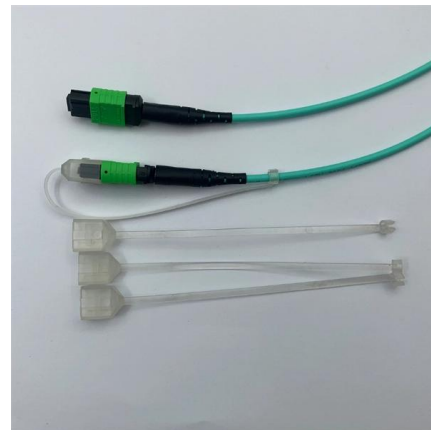


Fiber Terminal Box 24 Cores - IP55

This 24-core terminal box can connect the drop cable to the feeder cable as the termination point in the Fttx network, which is the cable to meet at least 16 user

FTTH Outdoor Termination Box 24 Core Optical Fiber

The FDB is made of high strength materials,UV resistance,waterproof,maximum capacity up to 24cores,with perfect space design,a variety of PLC splitter can be



Optical Fiber Terminal Box,24 Core 24 Port Fiber Optic

The wall-mounted user cable terminal box, whose function is to provide the fusion of fibers, the fusion of fiber and tail fiber, and the connection of optical connectors.

FTTH Distribution Terminal Box, FTTH Fiber Optic

Our fiber optic terminal boxes come in various sizes and designs, including 2 ports, 4 ports, 8



ports, 16 ports, 24 ports, and 48 ports, providing flexibility for different



24 Core Joint Box High Quality FTTH Fiber Splice Closure ONU

24 Core Joint Box Fiber Optic Splice Closure, also known as a fiber optic junction box or optic joint closure, is a critical component designed for protecting.



FTTH 24 Cores Optical Terminal Splicing Box Fiber

FTTH 24 Cores Optical Terminal splicing Box Fiber Optic Distribution Box for Fiber Optic Cable The equipment is used as a termination point for the feeder cable to



FTTH 24-core optical fiber distribution box 16-core PLC

Description: FTTH 24-core optical fiber distribution box 16-core PLC splitter box IP68 Optic Fiber Terminal Closure Optic Provides Space And Protection For The Fiber





12 Cores Fiber Optic Fusion Splicing Terminal Box-ARTIC FIBER

Function: This terminal box is designed to protect fiber optic splices and facilitate the distribution of fiber connections in FTTx (Fiber to the Home/Building) networks. It serves as a critical point for splicing



4 Port SC Fiber Termination Box, 4 Cores Splice

This 100*83*30mm 4 port fttt termination box is sc/lc fiber wall outlet that provides fiber connectivity to your enterprise and home, ideal for wall mount and desktop

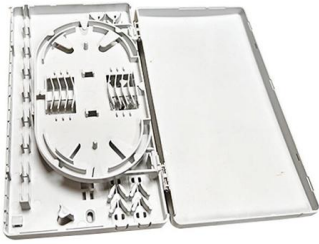
6 core Fiber Optical Splicing With 24 Port LIU ,, Full Installation

6 core Fiber Optical Splicing With 24 Port LIU ,, Full Installation ,, Beginner Watch this videoFiber optic splicing is the process of joining two fiber opti

PRODUCT CATEGORY				
Open rack Series	2000mm rack	12U open rack	18" Open Wall rack	Adjustable Depth Open rack
Wall mount rack Series	Glass door Wall mount rack	Mesh door Wall mount rack	Double section Wall mount rack	Economic type Wall mount rack
Floor standing server rack	Glass door with casters	Mesh door with casters	42U Standard Server rack	Double open door Server rack
Outdoor cabinet	air conditioner Outdoor cabinet	Outdoor cabinet with plinth	Outdoor cabinet with fan cooling	Evolve Wall Outdoor cabinet
Splitter series	Bare Fiber Splitters	Blackless Fiber Splitters	ABS Splitter	Panour Splitters
Splitter series	LCX Splitters	Rack Mount Splitters	Mini Plug-in Type Splitter	Tray Splitters
Patch cord series	LC	SC	FC	STC
FTTH product series				

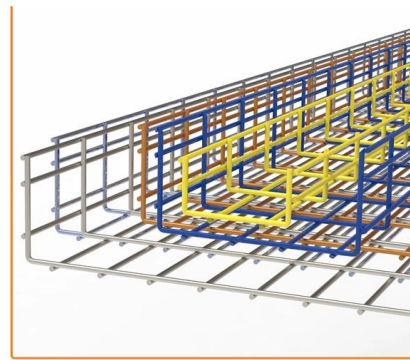
FTTH 24 Core Fiber Optic Distribution Box Optical Fiber Terminal Box

FTTH 24 core fiber terminal box is suitable for the distribution and terminal connection for various kinds of optical fiber system, especially suitable for mini-network terminal distribution, in which the optical



24 Core Fiber Optical Cable Joint Splice Closure

24 Core Fiber Optical Cable Joint Splice Closure, Find Details and Price about Distribution Box Terminal Box from 24 Core Fiber Optical Cable Joint Splice

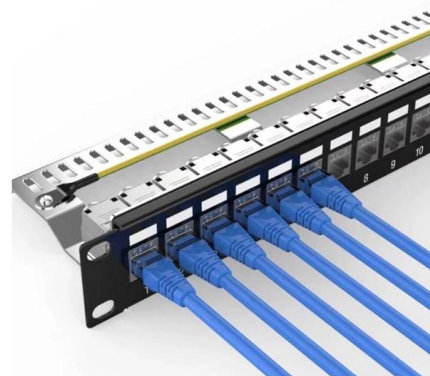


Optical Fiber Terminal Box, 24 Core 24 Port Fiber Optic Splice Tray

The wall-mounted user cable terminal box, whose function is to provide the fusion of fibers, the fusion of fiber and tail fiber, and the connection of optical connectors.

OPT-316 24 Core Fiber Optic Splicing Plastic Box

This box is used as a termination point for the feeder cable to connect with drop cable in FTTX communication network system. It integrates fiber splicing,





SMC 24 Cores Fiber Optic Termination Box , FTTH

The SJ-ODB-24-SMC is a 24 cores fiber optic termination box designed for efficient fiber optic cable management in both indoor and outdoor applications. This



Fiber Terminal Box 24 Cores - IP55

This 24-core terminal box can connect the drop cable to the feeder cable as the termination point in the Fttx network, which is the cable to meet at least 16 user requirements. It can



FTTH 24 Core Fiber Optic Splitter Terminal Box with

SP-1606-24E Terminal Box is made of high-quality ABS Plastic material. It's mainly used for indoor wall-mounted installation.Box cover with locks prevent illegal

FTTH 24 Cores Optical Terminal Splicing Box Fiber

The equipment is used as a termination point for the feeder cable to connect with





8 Port FTTH Fiber Distribution Box with 24 Cable

The 8 Port FTTH Fiber Distribution Box with 24 cable outlets can house 4 sc duplex adapters and one 1x8 blockless splitter and supports 24 cores splicing.

IP65 Strengthen ABS 24 Core Fiber Optic Distribution Box

The 24 Core Fiber Optic Distribution Box is a reliable termination point designed to connect feeder cables with drop cables. This box combines multiple



Exploring the 24 Core Fiber Optic Splice Closure

A 24 core fiber optic splice closure is a specialized enclosure designed to house and protect spliced fiber optic cables. It is equipped with the



FDB-T224C-24SC 24-Core IP55 Fiber Distribution Box

Ideal for FTTH, FTTB, and FTTC applications, supporting seamless fiber splicing and patching. IP55-rated enclosure ensures protection in diverse environments, from urban to rural settings.



IP68 PP Direct/Splitting Connection 24/48 Core Splice

The optical 48 core splice closures are designed for distributing, splicing, and storing outdoor optical cables. They support direct and splitting connections, suitable for



Ftth box 24 ports cores ODP box fibra optica FTTH caja

Suited for FTTH engineering cables reaching buildings, it can be installed in corridors, basements, computer rooms and exterior walls. It enables fiber



Fiber Cable Mechanical Splicing Guide Using Fiber

Learn how to perform mechanical fiber cable splicing inside fiber enclosures using fiber splice trays. This step-by-step guide covers fiber





24 Cores Optical Fiber Terminal Box , Carefiber

It is used as a termination point for the feeder cable to connect with drop cable in FTTx network system. It integrates fiber splicing, splitting, distribution, storage,



Fiber Optic Splicing Tray for 12/24 Cores, 45/60mm

The Optical Splice Tray, available in 12 Core and 24 Core configurations, is designed to manage excess fiber when splicing optical cables. Typically, it is installed in the

24 Cores Termination Box for Fiber Optics

The 24 Cores Termination Box is a reliable and cost-effective



FTTH 12 24 48 Core Sc/FC/St/LC Rack Mount Splicing Fiber Optic

FTTH 12 24 48 Core Sc/FC/St/LC Rack Mount Splicing Fiber Optic Patch Panel/Termination Box/ODF ODF unit box is a high-density, high-capacity design product, with good looks generous, reasonable



Contact Us

For datasheets, pricing, or custom telecom energy solutions, please visit:
<https://koskolong.co.za>