



Adam Tas Corridor Energy

24-port LC rack-mount 48-pin terminal box





24-port LC rack-mount 48-pin terminal box



LC-OM3 12 Duplex 24 Port Fiber Enclosure Box

Product Description Rack Mount LC-OM3 Kit 24 Core LGX Panel Fiber Enclosure - Complete Accessories Set Including 2 Splice Trays, 24 Strand LC MultiMode

Amazon : fyboptwu

1 Pack 48-Port (24 Duplex) OM2 Multimode LC UPC Fiber Optic Patch Panel - 48-Core Rack Mount Enclosure with Splice Trays, Pigtails & Couplers - Compatible with 19" Network Cabinets

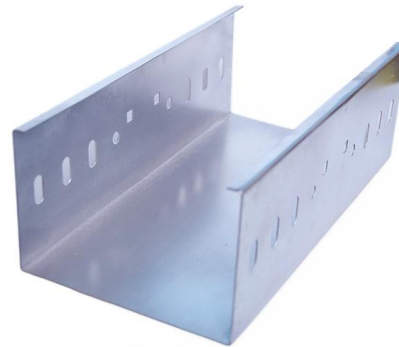


24 Duplex 48 Port LC-OM3 Multimode Fiber Enclosure Rack Mount Fiber Box

Buy 24 Duplex 48 Port LC-OM3 Multimode Fiber Enclosure Rack Mount Fiber Box LC-UPC Kit 1 RU Fits 19" Racks Cabinet (Include 2Pcs Splice Trays 48 Strand Pigtail 1M Cables Spool+48 Core LGX

LC-OM3 Multimode Fiber Enclosure

This fiber termination box offers a secure and organized fiber enclosure space, perfect for wiring closets. It provides top-level security in a



2U Rack Mount Fiber Optic Distribution Panel, 48 Fibers

2U Rack Mount Fiber Optic Distribution Panel, 48 Fibers OS2 Single Mode, 24 x LC UPC Duplex (Blue) Adapter ODF series indoor optical fiber distribution box is



Fiber Optic Distribution Box 24 Port Patch Panel

Rack mount serial dustproof cover optical fiber terminal box can be applied in the storage of indoor optical cable, distribution and terminal of various optical fiber



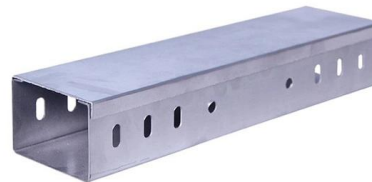
24 Ports LC SC 19" 1U Rack Mount Fiber Termination

Introduction to 1U Rack Mount Fiber Termination Box 24 Ports LC SC 19" 1U Rack Mount Fiber Termination Box Enclosure Fiber Distribution Patch Panel comes



Fiber Terminal Box, 24* Port Optical Fiber Distribution Hub

This Fiber Terminal box is for indoor/outdoor application, with 24 fiber termination capacity (48 fiber for LC connectors). It is usually located in the user access point,



1U 24-Port 48-Core FTTH Fiber Optic Patch Panel LC OTB 19-Inch

The 24-port LC 48-core fully equipped optical fiber box is made of 0.8mm high-quality cold-rolled plate and formed by metal stamping. Electrostatic frosted powder is sprayed with plastic, and the thickness



FYBOPTWU-24 Duplex Singlemode 48 Port LC Fiber Optic Rack

FYBOPTWU-24 Duplex Singlemode 48 Port LC Fiber Optic Rack Mount Enclosure Box + Splice Trays Fiber LC-UPC Kit (Include Pigtail & Couplers), 48 Core LGX Patch Panel Box fits for 19" Racks Cabinet



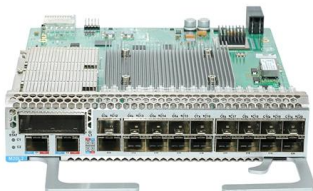


12 Duplex 24-Port LC-OS1 Fiber Rack Mount Enclosure

Rack Mount LC-OS1 Kit LGX Panel Fiber Enclosure - Set of Accessories is Complete Include Splice Trays 24 Strand LC SingleMode Pigtail + Duplex Fiber Couplers,

Fiber Enclosure Rack Mount 1U (1.75") 48 Port (24

This 19 Inch Rack Mount Fiber Enclosure, the PFPP-SL01-24LC2, and its low profile 1U (1.75") design comes with 24 Duplex LC/UPC couplers pre-installed providing



Fiber Optic Distribution Box 24 Port Patch Panel

Fiber Optic Distribution Box Application: Rack mount serial dustproof cover optical fiber terminal box can be applied in the storage of indoor optical cable,

Fiber Enclosure Rack Mount 1U (1.75") 48 Port (24

This 19 Inch Rack Mount Fiber Enclosure, the LCAPP-SL01-24LC2, and its low profile 1U (1.75") design comes with 24 Duplex LC/UPC couplers pre-installed



Optical Distribution Fiber Rack mount 19"

Optical Distribution Fiber Rack mount 19" - full load - 24Port SC Simplex or LC Duplex ESCAB Fiber Optic Management Units are used for fiber optic splicing,



Fiberhome Rack-mounted Optical Fiber Terminal Box 24-Port 48

This Fiberhome terminal box supports up to 48 single-mode fibers with LC dual-linked connectors across 24 ports, delivering high-density cable management in a compact rack-mounted design.



RAMEX 24-Port LC/PC Rack Mount Steel Fiber Distribution Box,

Product description Ramex 24F-Port LC/PC Rack Mount LIU is fiber enclosure that provides cross-connect and interconnect capabilities for splicing and terminating OFC cables, pigtails in fiber access



19 inch 24-port LC ODF optical fiber distribution box

Fiber optic patch panels Fiber optic adapters
Fiber Transceiver Fiber optic terminal boxes Wall-
Type Fiber Optic Panels Pre-terminated fiber
optic cables Fiber optic



24 Port Fiber Optic Rackmount Enclosure Box Fiber

Amazon : OpZonik 24 Port Fiber Optic Rackmount
Enclosure Box Fiber Patch Panel LC Singlemode
1U Fiber Optic Terminal Box with Pigtails &
Couplers

48 Core 1U Sliding Type Rack Mount Terminal Box ODF

Enhanced Reliability and Durability: This 48 core
1U sliding type rack mount terminal box offers a
sturdy and long-lasting design, crafted from high-
quality cold-rolling



Fiber Patch Panel, 24 Port Loaded SC

· Fiber input: 4 · Adapters output: 12core or 24
core or 48 core · Suitable for different adapter
(SC simplex, SC duplex, LC duplex, ST simplex,
FC simplex) · The slide



FTTH 12 24 48 Core Sc/FC/St/LC Rack Mount Splicing Fiber Optic

FTTH 12 24 48 Core Sc/FC/St/LC Rack Mount Splicing Fiber Optic Patch Panel/Termination Box/ODF unit box is a high-density, high-capacity design product, with good looks generous, reasonable



Network Cabinet & Rack

24 Port Fiber Termination Box 1U 19" Rack-Mount

Secure your network with a versatile 19" rack-mount 24 port fiber termination box, accommodating up to 24 fiber connections with customizable options for ultimate



FTTH Outdoor 19 Inch 8/12/24/48 Port Fiber Optic ODF Equipment Rack

Data Centre infrastructure Storage Area Network-Fiber Channel Data communication applications Emerging 40 and 100Gbps Protocols compatible Technical Parameter Name: MPO Patch Panel



Rack-mounted Fiber Optic Terminal Box

The fiber optic terminal box is designed for FTTH applications, accommodating at least 4-16 users. It provides ample space for splicing, splitting, storage, and cable



FTTH Sc/LC/St/FC MPO 8/12/24/48 Port/Cores Optical

FTTH SC/LC/ST/FC MPO 12/24/48/72/96 Port/Cores Fiber Optic ODF Equipment Rack Wall Mount Terminal Splitter Distribution Box Optical Patch Panel Fiber



Haile 24-Port 48-Core Terminal Box P2A-48M-LC , 1U Pull-Out Rack

The Haile 24-Port 48-Core Terminal Box P2A-48M-LC is designed for managing multi-mode fiber optic cables with a high port density. This patch panel features 24 ports and accommodates up to 48 fiber





1U Sliding Type 48 Core ODF Fiber Optic Patch Panel

This 1U sliding type rack mount terminal box is a high quality fiber optic patch panel. With 48 core and 24 port design, it offers efficient optical signal transmission.

Mesh door/glass door optional



Sp-601 glass door

Sp-602 mesh door



Premium-Line 24 ports Wall Mounted Fiber Optic Box

Premium Line 24 ports wall mount fiber optic box is used for the direct termination of fibers. Box include two separate sections.

Contact Us

For datasheets, pricing, or custom telecom energy solutions, please visit:
<https://koskolong.co.za>