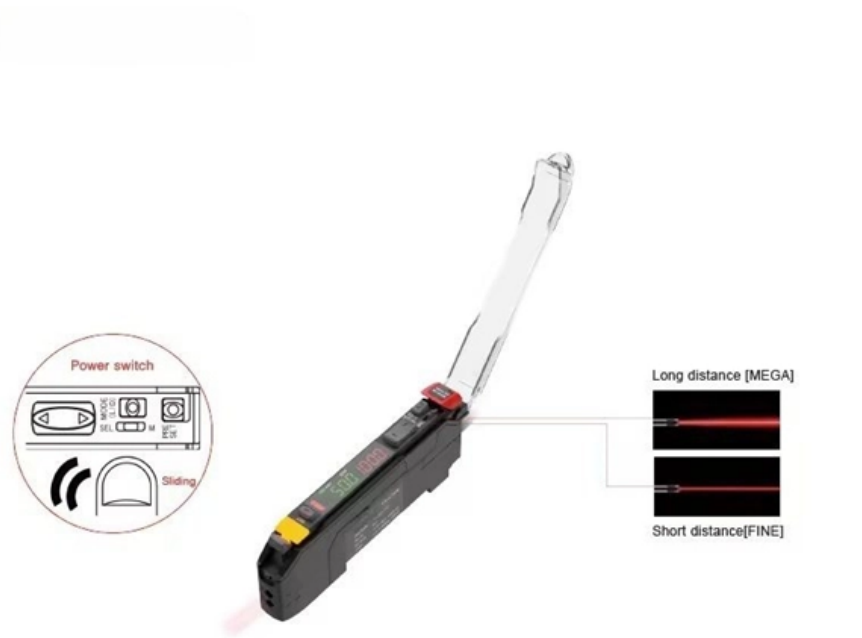




**Adam Tas Corridor Energy**

# 25G Single-Mode Optical Module Selection





## 25G Single-Mode Optical Module Selection

---

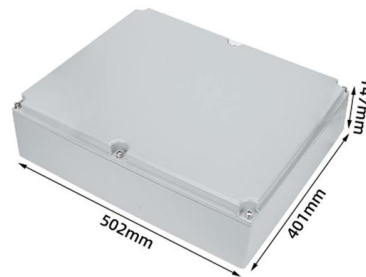


### SFP28 25G LR Transceiver: Complete Guide for 25G Ethernet

Whether you are upgrading a data center network, deploying 25G spine-leaf architecture, or evaluating third-party optics, this guide will help you determine if an SFP28 25G LR module is the right choice

### What is an SFP Optical Module? The Complete Guide to

Understand the core function, compare data rates (1G to 25G), learn critical compatibility rules, and follow our 5-step checklist for selecting the perfect



### 1.25G Gigabit Single-Mode BIDI Optical Module LC Interface 3

Product Summary: 1.25G Gigabit Single-Mode BIDI Optical Module LC Interface 3/20/40/80/100/120km (20km-1490/1310) From XHSDBCY

### 1.25G Gigabit Single-Mode BIDI Optical Module LC Interface

Product Summary: 1.25G Gigabit Single-Mode BIDI Optical Module LC Interface



3/20/40/80/100/120km (40km-1310/1550) From RKXVFFUJ



### 1.25G Gigabit Single-Mode BIDI Optical Module LC Interface

Product Summary: 1.25G Gigabit Single-Mode BIDI Optical Module LC Interface  
3/20/40/80/100/120km (20km-1310/1490) From RKXVFFUJ



### Small Form-factor Pluggable

Small Form-factor Pluggable Small Form-factor Pluggable connected to a pair of fiber-optic cables Small Form-factor Pluggable (SFP) is a compact, hot-pluggable



### 25G SFP28 SR vs. LR , We Explain the Difference!

When purchasing 25G SFP28 transceivers, you will often choose between multimode SR and singlemode LR. Each variant offers unique advantages and application possibilities. This article





## How to Choose SFP Module for Compatibility, Speed,

Learn how to choose the right SFP module based on compatibility, speed, fiber type, wavelength, and distance. Practical guide for engineers and IT



## 25G Single-Mode Optical Module

SFP28 transceiver that supports 25G connections up to 10 km using single-mode fiber with a duplex LC UPC connector.



## Optical Module & Fiber Optic SFP Module Factory Manufacturer

Home - Network Cabling - Optical Communication - Optical Module Categories 1.25G LC Single-mode-fiber-coupled Optical Transceiver Mod



## Cisco SFP-25G-LR-S Compatible SFP28 Module,

Cisco SFP-25G-LR-S Compatible SFP28 Module, 25Gbps Single Mode Fiber (SMF), 10km (6.2mi), LC Connector, 1310nm, MSA 25 Gigabit Optical Transceiver

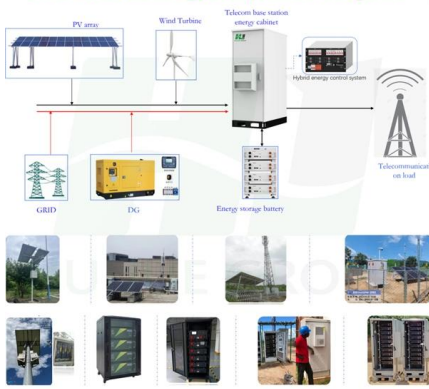


### Ubiquiti 1 Gbps Bidirectional UACC-OM-SM-1G-S-2 , Cendirect

The 1 Gbps Bidirectional Single-mode Optical Module is a simplex transceiver that delivers up to 1.25 Gbps speed over distances up to 3 kilometers.



Base station energy composition diagram



### SFP Optical Modules , High-Quality Fibre Connectivity

Explore our selection of SFP optical modules, including single-mode and multi-mode options from brands like MikroTik, Ubiquiti Networks, MaxLink, and Turris. Perfect

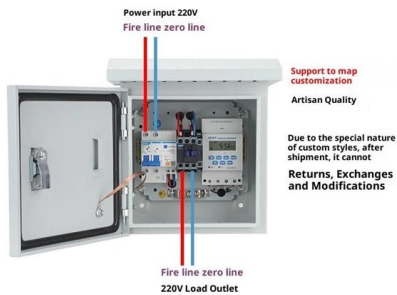
### TOP-BIDI-1.25G-120AD/BD 1.25G BIDI SFP Module 120km

Key attributes Network Wired LAN Use switch Type optical module, Fiber Optic Transceivers Model Number TOP-BIDI-1.25G-120AD/BD Brand Name Top-trans Place of Origin Guangdong, China Rate





### Product Wiring Diagram

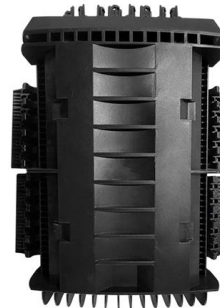


## SFP Data Rate Explained: 1G vs. 10G vs. 25G Selection Guide

Understand SFP data rate differences across 1G, 10G, and 25G. Learn compatibility, speed limits, and how to choose the right SFP or SFP+ module.

## An In-depth Guide to 25G SFP28 Optical Transceiver

Discover the advantages, specifications, and applications of 25G optical transceiver solutions--for high-speed data center, enterprise, and telecom networks.

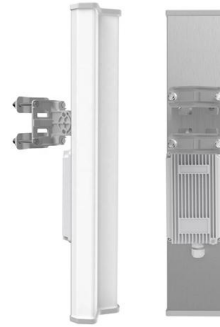


## 25G optical modules for your network

A practical guide to selecting and implementing 25G optical modules, based on network needs and equipment compatibility.

## 25G optical modules for your network

A practical guide to selecting and implementing 25G optical modules based on network needs and equipment compatibility.



## SFP 25G Modules: LR vs MR vs ER vs SR - The

This guide helps engineers and procurement teams choose the right 25G optical modules. It covers standards, distances, fiber types, power use, and

## 25G Multi-Mode Optical Module SFP-25G-SR Dual Fiber 850nm 100m Single

Fiber Optic Receivers Model: 25G multi-mode  
25G-850nm-0.1km-SFP28 5G for computer room  
Interface type: Dual LC interface Transmission  
distance: 25G multi-mode, 25G single-mode



## The Ultimate Guide to SFP Modules (2026): Types,

Confused by SFP vs SFP+? Read the definitive 2026 guide on SFP modules. We explain Single Mode vs Multimode, DDM diagnostics, and how to choose the right



## 5G Fronthaul 25G SFP28 Optical Module Selection Guide , Langzhi

Complete guide to selecting 25G SFP28 optical modules for 5G fronthaul networks. Compare SR, LR, ER, BiDi, and CWDM types covering transmission distance, wavelength, power



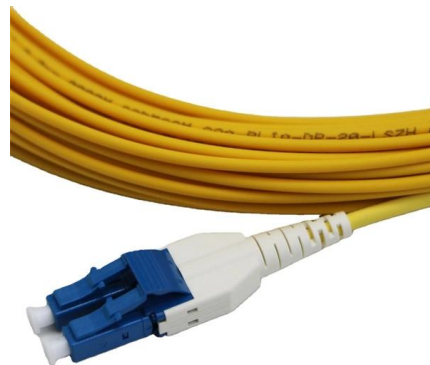
## SFP28 Modules: Guide for Data Centers and 5G

This guide will provide the essentials regarding module types, deployment options, and compatibility to initiate smart and cost-effective decisions for high-speed



## SFP28 Optical Transceiver Modules for Sale (25G) , Cables on Demand

SFP28 Optical Transceiver Modules (25G-SR/LR)  
Buy 25G SFP28 Optical Transceiver Modules by Amphenol XGIGA Factory-Direct at Cables on Demand! Optimized for data rates up to 28.0 Gbps





### **1.25G Gigabit Single-Mode BIDI Optical Module LC Interface 3**

Currently unavailable. We don't know when or if this item will be back in stock. Sign in to continue  
1.25G Gigabit single-mode BIDI optical module  
LC interface 3/20/40/80/100/120km See

## **Contact Us**

---

For datasheets, pricing, or custom telecom energy solutions, please visit:  
<https://koskolong.co.za>