



Adam Tas Corridor Energy

288 Fiber Optic Cable Configuration





Overview

The cable consists of a single buffer tube containing 24-fiber and 36-fiber ribbons wrapped within a water-swellaible foam tape and surrounded by a second water-swellaible tape. Excel corrugated steel tape (CST) OS2 9/125µm armoured loose tube optical fibre cables have been designed specifically for. Unit Properties Fibre Jelly Filled Loose Tube with Optical Fibre Strength Member Fibre Reinforced Central Strength Member (FRP) PE Coated Waterblocking Agent - CSM Water Blocking Yarn Waterblocking Agent around Cable Core Water Blocking E-Glass Ripcord Yes Sheath Material UV Stable Halogen Free. FX Indoor/Outdoor, Loose Tube, OS2, 288 Fibers, OFNR, Sub-Units (12F), Dry, Black Jacket Max. Tensile Strength During Operation 288 singlemode fibres for high density data center distribution applications. Corning SST-UltraRibbon gel-free cables continue the innovative breakthrough in outdoor cable technology by introducing a new generation of high-fiber-count gel-free cables. Providing high-fiber-counts in a rugged, compact design, the enhanced coupling features ensure the ribbon stack and cable act.



288 Fiber Optic Cable Configuration

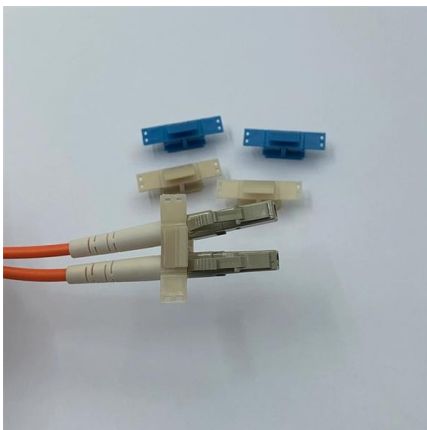


288EV4-14100D53 , SST-UltraRibbon Single-Tube, Gel

The cable consists of a single buffer tube containing 24-fiber and 36-fiber ribbons

1 In 16 Out Fiber Optic Splice Closure with Splitter Slot,

The 288 core 17 port dome fiber splice closure with splitter slot is a high-capacity outdoor enclosure designed for fiber splicing, distribution, and signal splitting in



288 Fiber Count with OWIRE Solutions

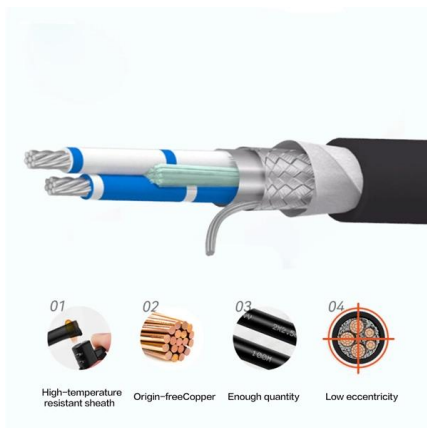
One such solution gaining widespread recognition is the 288 fiber count cable. This robust configuration allows for the integration of a substantial number of optical fibers within a single

GCCF288 Technical Data Sheet

Universal (Indoor/Outdoor) dry core optical fiber
Multi Loose Tube cable with glass yarns as strength member, Corrugated Steel Tape (Full



Rodent Protected) armor and Low Smoke Zero Halogen outer



Fibre Optical Multi Loose Tube Cable, Indoor-Outdoor, 288F

Building interconnection, Backbone networks, Telecommunication and drop cable applications. Cross Section Drawing . Design .

Product Spec Sheet 288ZVF-14101D20

The smallest and lightest in the industry, these cables are designed to maximize the use of critical duct space with excellent installation results. The UV-resistant, flame-retardant jacket



The FOA Reference For Fiber Optics

High Fiber Count Fiber Optic Cables As fiber optic communications systems are expanded to accommodate rapidly growing communications needs, there has



Multi-Loose Tube Fiber Cable

Fiber Multi-Loose Tube Cable Suitable Applications Campus Area Network, Long Haul, Backbone Fiber Specifications Fiber Type OS2, G.657.A1, G.652.D Fiber Diameter 250 μ m Fiber Count 288 Fiber



Dome Fiber Optic Splice Closures , Wholesale IP68

Dome Type Optical Fiber Splice Closures Overview: Dome type optical fiber splice closures, also known as vertical closures, are essential components for protecting

Fiber Optic Distribution Frame (ODF) , Rack & Wall Mount

Fiber optic distribution frame (ODF), also known as fiber patch panel or optical distribution frame, is a rack-mount or wall-mount enclosure that provides organized termination, splicing, and patching of



UltraRibbon Indoor, Gel-Free Cables, 288

The cable consists of a single buffer tube containing a stack of up to eighteen 24-fiber ribbons. The 24-fiber ribbons can be easily separated by hand into two 12-fiber ribbons.



Opti-Core 144 and 288-Fibre Indoor Ribbon Cables, LSZH and

288 singlemode fibres for high density data center distribution applications. The fibres shall be ribbonized for easy mass fusion splicing and termination with 12-fibre MPO style connectors.



Online Bulk Cable Company , CableWholesale

As a premier online bulk cable company, CableWholesale carries a large inventory of computer cables, USB, HDMI, fiber optic, VGA cables, and more. Shop now!



Fibre Optic Cable Horizontal 288 Fibre Outdoor Cable

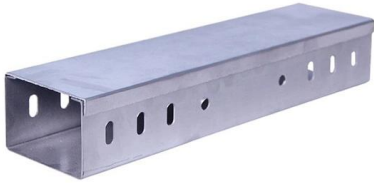
Horizontal 288 Fibre Outdoor Cable Product Description Briticom® offers a wide range of indoor and outdoor fibre optic distribution, patching and consumer cables including Plenum, Riser and LSZH in





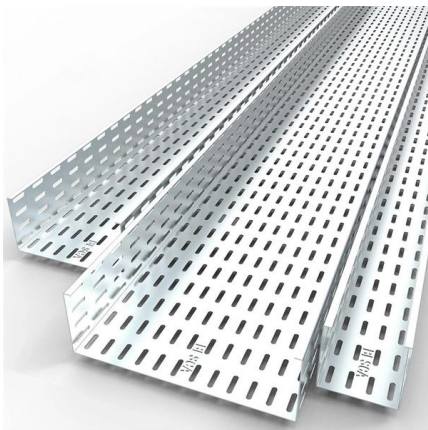
1X8 Cassette Type Fiber Optic Splitter

Fiber optic cable splitter is a important passive devices in the optical fiber link, We supply 1x2,1x4,1x8,1x16,1x32 cassette type plc spliter.



ODF 288 cores Rack Mount Fiber Optic

ODF 288 Overview: The ODF 288 is used as terminal equipment of fiber optic cable for optical fiber wiring, fixation, fusion and patching. Fiber Distribution Panel is a

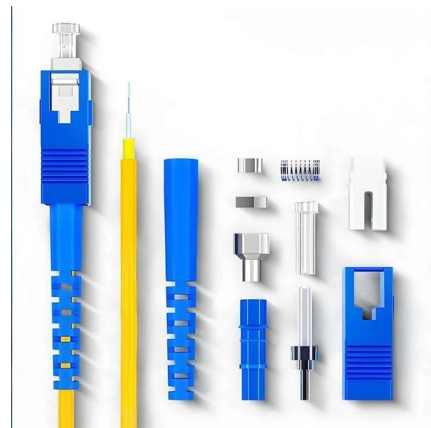


Underground Installation of Optic Fiber Cable Placing

Placing cables underground has the added benefits of reducing transmission losses, aiding planning consent and reduced risk of service supply loss through extreme weather. This practice covers the

ODF Fiber Optic Patch Panel, ODF Unit Box

ODF fiber optic terminal box manufactured by UnitekFiber Solution is flexible in configuration, simple in installation, easy to maintain, and is an indispensable





Custom Fiber Optic Patch Cables

Custom Cable Configurator Step 1: Select Your Fiber Type Please select Single Mode (SM), Multimode (MM), or Polarization-Maintaining (PM). Alternatively, enter the item number of the specific fiber you

Fiber Optic Patch Cables for Sale , Cables on Demand

With 4 decades of fiber optic interconnect manufacturing experience, our optical assembly personnel are adept at processing a wide variety of fiber termini,

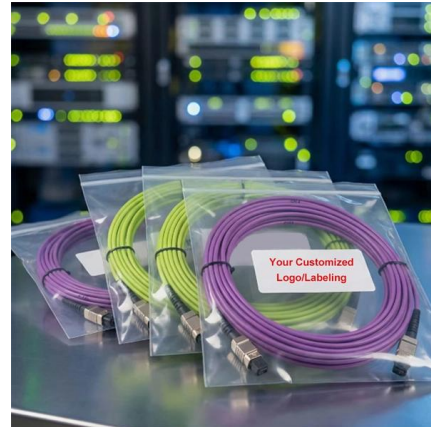


GYTS Tight Buffer Armored Fiber Optic Cable

GYTS Tight Buffer Armored Fiber Optic Cable DEKAM GYTS cables ensure reliable data transmission. The loose tube build protects all optical fibers inside. You gain

Fiber Optic Color Code Chart For 144 and 288 Count

This is an update on a post we made a few years ago for a 144 count fiber color identification chart. Since then we have noticed thousands of searches from



Optical Fiber , Optical Fiber Products , Corning

Optical fiber broadband brings together a culture of innovation, quality, and manufacturing excellence to create life-changing products.



Enbeam OS2 Armoured CST Fibre Optic Cable Loose Tube 288 Core

The singlemode fibre is G.652.D compliant low water peak grade and offers OS2 performance and OS1 backwards compatibility. These compact, lightweight cables are extremely rugged, provide rodent



288ZH4-S4F42A20 , MiniXtend® HD Cable with Binderless

The innovative Binderless FastAccess Technology improves cable handling and reduces access time up to 70 percent while lowering risk of cable and fiber damage. MiniXtend HD cables have an SZ





Optical Distribution Frame (ODF): The Complete Guide for Fiber

Comprehensive guide to Optical Distribution Frames (ODF) for data centers. Learn ODF types, installation best practices, fiber management, patch panels, MPO/MTP solutions, and high



FIBER OPTIC PATCH PANELS

Patch Panel Configurations: Empty panels - ready for custom termination in the field. Panels with adapters - unloaded frames pre-fitted with your choice of adapter

288 Fiber Optic Cable with OWIRE Solutions

Among the various configurations available, the 288 fiber optic cable stands out as a powerful solution for large-scale networks requiring extensive bandwidth and future-ready architecture.



Contact Us

For datasheets, pricing, or custom telecom energy solutions, please visit:
<https://koskolong.co.za>