



Adam Tas Corridor Energy

35kV busbar short circuit trip





35kV busbar short circuit trip



Handling 35kV Substation Fault Tripping

How to respond to 35kV substation tripping? Step-by-step fault analysis and recovery procedures.

35kV Substation Electrical Design , PDF , Transformer

It also covers short-circuit current calculation, selection of electrical equipment, and lightning protection and grounding design. The overall goal is to design a 35kV



The protection of busbars

The protection of busbars Busbars are vital parts of power networks because they link incoming circuits connected to sources, to outgoing circuits which feed loads. In the event of a fault on a section of



Top Busbar Protection Issues That Worry Protection

Consideration Issues A busbar protection must be capable of clearing all phase-to-earth faults,



and in the case where they can occur, phase-to-phase



How to Size Busbar Trunking: Current, Short-Circuit,

Size busbar trunking by selecting proper current rating, short-circuit withstand, and voltage drop for safe, efficient power distribution in your facility.

Numerical analysis on the short-circuit withstanding

The short-circuit withstanding performance of busbar system is one of the most important safety indexes for low-voltage (LV) switchgear. The resonance



INFO-RF-based fault diagnosis and analysis method for busbars

This paper presents a method for busbar fault diagnosis and analysis that combines the weighted mean of vectors (INFO) algorithm with the Random Forest (RF) model.



Principles and schemes of busbar and breaker

Busbar protection in general A busbar protection is a protection to protect busbars at short-circuits and earth-faults. In the "childhood" of electricity



Principles and schemes of busbar and breaker

Busbar protection in general A busbar protection is a protection to protect busbars at short-circuits and earth-faults. In the "childhood" of electricity

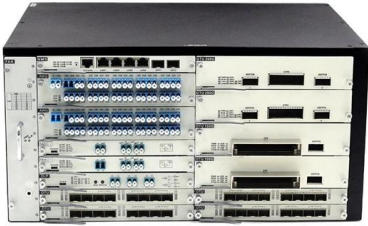
Short-Time Current Rating of Conductor

The following calculator computes the expected time for a cable, conductor, or bus bar to rise in temperature under short circuit or short-time overcurrent conditions.



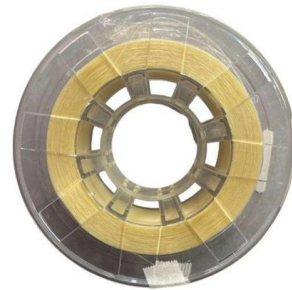
Top Busbar Protection Issues That Worry Protection

Policy regarding fault clearance times required from busbar protection varies from utility to utility. Due to the fact that the short-circuit levels of bus bars



The situation when short circuit occurred at Gjilani 35 kV

Figure 3 presents scenario 2, when short circuit occurred at the Gjilani 35 kV busbar.



Short Circuit Analysis Of 33/11 Kv Msedcl Using Etap Software

Short circuit analysis is a critical aspect of power system studies, particularly for urban substations like 33/11 kV configurations, which serve high-demand areas. Numerous studies over the past decade

Copper for Busbars

The maximum circuit breaker tripping time is 200/Dtr seconds. Busbars that have been subject to short circuit should be allowed to cool and inspected before being returned to service to ensure that all



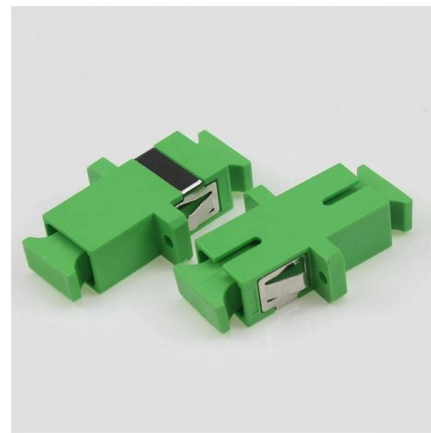


35kV RMU Busbar Failure Due to Installation Errors

This paper introduces a 35kV ring main unit busbar insulation breakdown fault, conducted on-site fault inspection, fault waveform analysis, and fault cause analysis.

High Voltage Busbar Protection

HIGH VOLTAGE BUSBAR PROTECTION The protection arrangement for an electrical system should cover the whole system against all possible faults. Line protection concepts, such as overcurrent and



Types 8DA10 and 8DB10 up to 40.5 kV

Single-busbar switchgear 8DA10 and traction power supply switchgear 8DA11/12 is delivered in transport units comprising up to four panels. Double-busbar switchgear 8DB10 is delivered in

Protection for 132kV, 33kV and 6.6/11kV Systems

The third stage after another short delay shall trip/intertrip the remote end 33kV circuit breaker. All new and replacement primary switchboards will incorporate the modern version of the busbar blocking



Electrical Thumb Rules You MUST Follow (Part 4)

Eight rules to follow: substation capacity and short circuit current capacity, minimum ground clearance, busbar ampere rating and spacing, sound

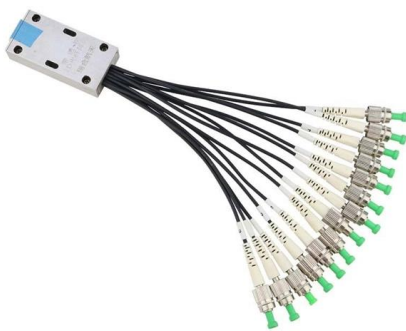


ABB Group

Introduction to medium voltage switchgear by ABB, exploring its features, benefits, and applications in enhancing industrial digital technologies.



GIS NXPLUS Catalogue EN

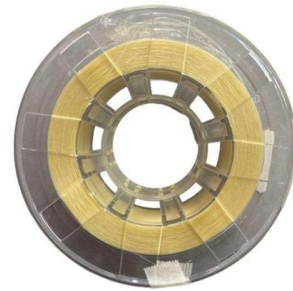
59 to 61 Types Panel for single busbar Panel for double busbar Fixed-mounted circuit-breaker switchgear NXPLUS is a factory-assembled, type-tested, metal-enclosed, SF6-insulated switchgear





Rough Balance Busbar Protection and Breaker Failure Protection for

When this happens to a circuit breaker connected to a busbar, tripping out of the busbar to clear the fault is inevitable. For this reason, breaker failure protection is normally incorporated into

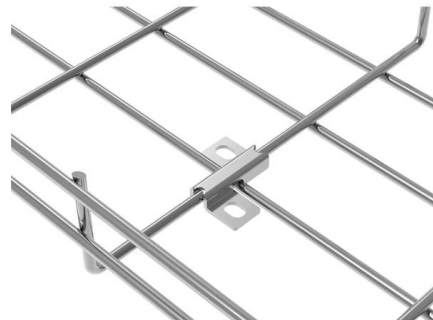


Multiphysics analysis of busbars with various arrangements under

The objective of simulation is to compare the behaviours of various busbar arrangements under short-circuit conditions and find an appropriate design principle for busbar structures.

Busbar Differential Protection Scheme

A typical DC circuit for busbar differential protection scheme is given below. Here, CSSA and CSSB are two selector switch which are used to put into



Analysis of a Trip Accident Caused by Short Circuit Impact of 35kV

In this paper, a trip accident of main transformer caused by cable short circuit impact is introduced in detail. Firstly, the anti-short circuit ability of transformer is analyzed, and the influence of transformer



Contact Us

For datasheets, pricing, or custom telecom energy solutions, please visit:
<https://koskolong.co.za>