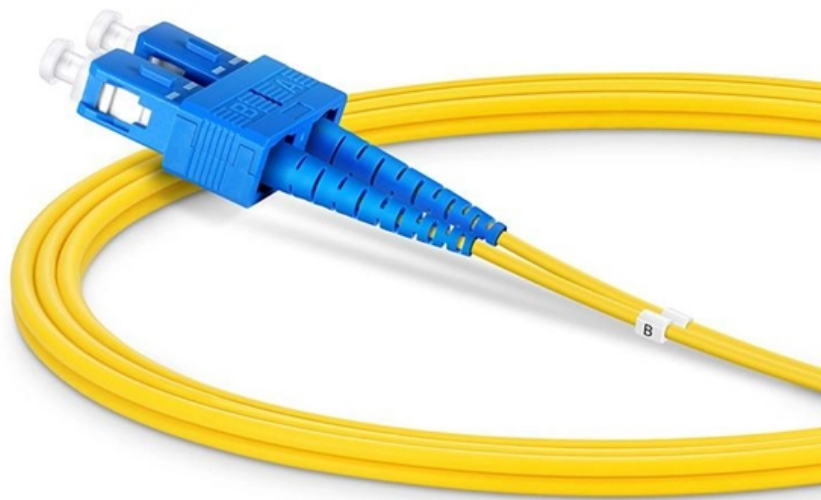




Adam Tas Corridor Energy

405nm Laser Diode 671





405nm Laser Diode 671



405nm Laser Diodes - Shop Laser Diodes from Top Brands

Nichia Laser Diodes View Wavelength 405 nm
Output Power 0.045 W Package Type TO-Can
Mode Structure Single Mode ** This Product is
Currently Unavailable ** 405nm, 45mW Single
Mode Laser

405nm Laser Diodes for Medical Bio & Industrial , Shop

Our Violet 405nm laser diodes, based on GaN/InGaN technology, deliver near-UV performance for cutting-edge biomedical, optical, and industrial applications,



405 nm Blue-Violet Laser Diodes

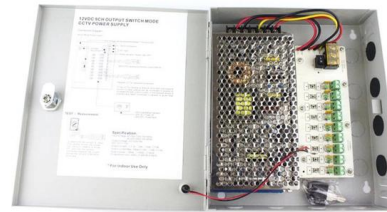
405 nm blue-violet laser diodes, the NV4V31MF-A, NV4V31SF-A and NV4V41SF-A, are designed for precision measurement, printing, and imaging applications.

405nm Laser Diode - BeamQ Laser

405nm laser diodes have violet color. BeamQ All kinds 405nm Diode s. 405nm laser diodes are based on a heterostructure with either gallium

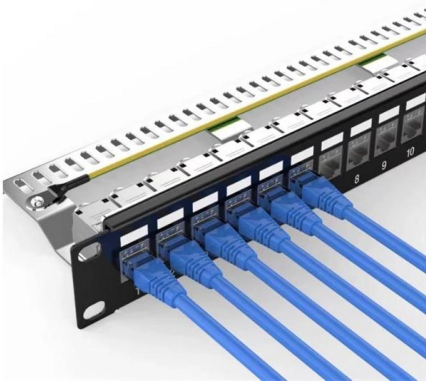


nitride or indium gallium



405 nm Laser Diode, 175 mW

This 405 nm, 175 mW TO packaged laser diode is a compact light source that outputs a single transverse mode and is suited for a variety of applications such as bio and medical, 3D printing, or



Visible Series Laser Diodes (405 to 690 nm)

Visible Series Laser Diodes 405 to 690nm Visible series laser diodes feature standard wavelengths centered at 630nm, 650nm and 670nm. Fiber-coupled CW



DPSS Laser Systems, 671 nm

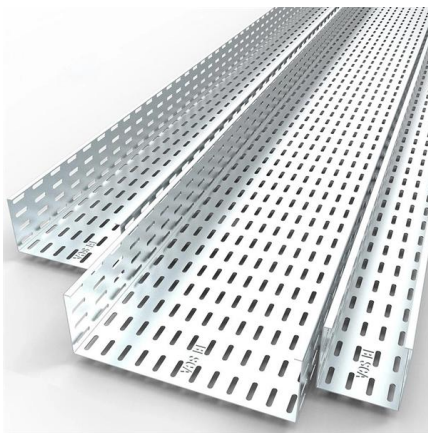
DIODE PUMPED SOLID STATE LASERS, 671 nm RLTMRL-671 series 80-250 VAC power supply included. Available options: 3 % and 1 % power stability, modulation, fibercoupling, adjustable power





405 nm Laser

Description Polarization-maintaining fiber-coupled 405 nm diode laser features extreme brightness combined with perfect beam shape and virtually perfect

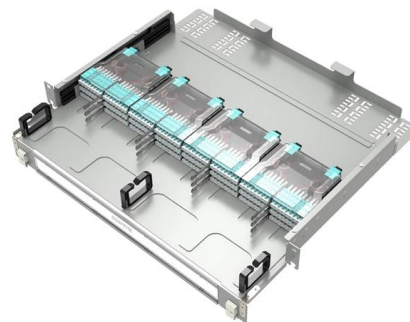


405 nm SLM Laser

This laser provides a stable and narrow linewidth output at a 405 nm wavelength. Its meticulously engineered single-mode characteristics make it an ideal tool for

405 nm SLM Laser

Description High-performance 405 nm single longitudinal mode (SLM) laser, designed with precision for applications in Raman scattering and fluorescence



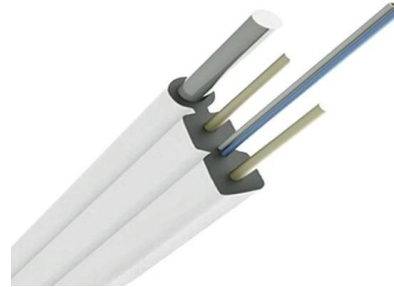
405nm Laser Diode HL40071MG by USHIO (300mW)

This single mode 405nm laser diode delivers up to 300mW output power. The TO-56 package includes an integrated photodiode for power output monitoring and the pin configuration is common



Roithner Lasertechnik

RLDE405M Series, with modulation Violet laser diode module CW operation or TTL modulation up to 20 kHz Glass lens, focus adjustable APC (automatic power control) Operating



Thorlabs, Inc.

Hier sollte eine Beschreibung angezeigt werden, diese Seite lässt dies jedoch nicht zu.

405nm Laser Diodes

The company credited with the creation of the 405nm laser diode, Nichia Corporation, is still the primary manufacturer of this laser wavelength. Other companies who manufacturer these devices include



DIODE LASER SYSTEMS

RLTMFC-405 series, Fiber Coupled RLTMFC series combined laser diode, laser cavity, fiber coupling, power supply, LED display and crystal temperature control



405nm Laser Diode

405nm Laser Diode Features Output Power:
140mW (CW) Efficient Quantum Well Structure
Standard TO-18 Package



405 nm Laser Range

Our 405 nm laser range is designed to meet the demands of applications that require a short wavelength of 405 nm, offering output power levels ranging from 600 mW

RLTMDL-405 1-500 mW

Violet diode laser module at 405nm is made features of ultra compact, long lifetime, low cost and easy operating, which is used in measurement, communication, spectrum analysis, etc.



405nm single mode laser diode , CNIlaser

Laser diode provided by CNI laser at 405 nm provide state-of-the-art power and brightness. The single mode, narrow line width, small emitting aperture, combined with low beam divergence, make these



D6-7-405-80

Introduction currently markets GaN based blue laser diodes 405nm, 450nm wavelengths range. The low operating current and high temperature of the laser diodes are achieved through using misoriented



Ushio has launched longer-life, 405 nm, 600 mW

HL40173MG, HL40175MG laser diodes offer increased voltage protection for biomedical, measurement, and 3D printing applications Ushio has launched its

Amazon : 405nm Laser Diode

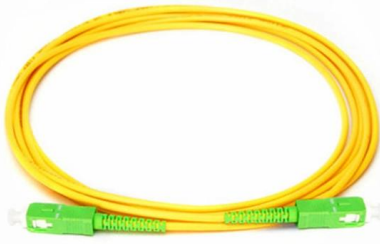
10pcs 405nm Blue-Violet 5.6mm TO-18 Laser Diode, 20mW Output, With Photodiode, -10°C~+50°C Operating Temp, Precision Optoelectronic Add to cart





D6-7-405-20

Introduction currently markets GaN based blue laser diodes 405nm, 450nm wavelengths range. The low operating current and high temperature of the laser diodes are achieved through using misoriented



Contact Us

For datasheets, pricing, or custom telecom energy solutions, please visit:
<https://koskolong.co.za>