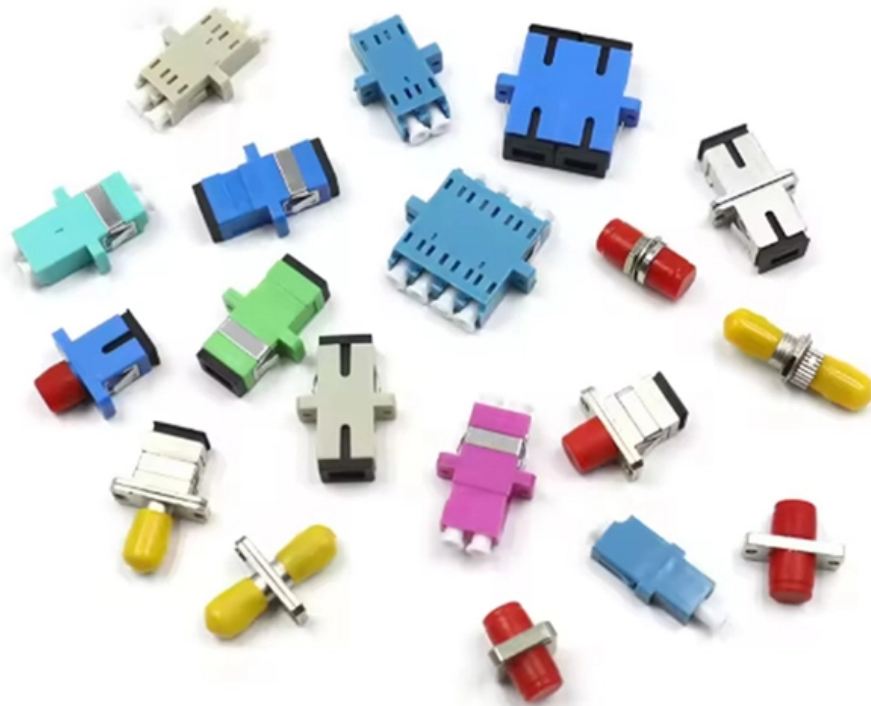




**Adam Tas Corridor Energy**

# **40GbE Optical Module 10 Gigabit Multimode**





## 40GbE Optical Module 10 Gigabit Multimode

---



### **10Gtek 40GBASE-CSR4 QSFP+ MPO Multi-Mode Transceiver, 40**

Compliant to the IEEE 802.3ba standard, SFF 8436 and QSFP Multisource Agreement. Easy to Use - Easy installation, plug and play, fully hot-pluggable. Widely used in fiber switches,

### **10GB SFP Modules , 10G SFP Modules , 10G Ethernet SFP Modules**

Versitron's 10G SFP modules deliver reliable 10 Gigabit Ethernet connectivity in a compact, hot-swappable design, offering flexible solutions for extending Ethernet over fiber in data centers,



### **40GBASE-LR4 QSFP+ 1310nm 10km DOM LC SMF Optical Transceiver Module**

The QSFP-40GE-LR4 QSFP+ Optical Transceiver Module is designed for use in 40GBASE Ethernet throughput up to 10km over single mode fiber (SMF) using a wavelength of 1310nm via duplex LC

### **Dell networking transceivers and cables**

Dell enables cost-savings through the reuse of a legacy 10GbE fiber plant to support newer 40GbE



connections with our 40GbE duplex (multimode) fiber solutions. These solutions use wavelength



## **Introduction to 10GbE/25GbE/40GbE/100GbE Fiber Optic Cabling**

Cost-effective 10GbE Fiber Optic Cabling 10 Gigabit Ethernet technology defined by IEEE 802.3ae-2002 standard, is matured nowadays.

## **Your Guide to 40GbE and 100GbE Optics**

Here's Curvature's brief overview of the current 40GbE & 100GbE optics types & form factors for future high-performance Ethernet planning needs.



## **OM4 Multimode Fiber FAQ: High-Speed Connectivity**

Some common optical modules compatible with OM4 patch cables include: SR (Short Range) Modules: These are typically used for short-distance



## JUNIPER NETWORKS EX3400 SWITCH

Product overview Juniper Networks® EX3400 Switch delivers a high performance, flexible, and cost-effective solution for today's most demanding converged data, voice, and video enterprise access



## Cisco QSFP-40G-LR4 Compatible 40GBASE-LR4

Besides, the quad small form-factor pluggable (QSFP) LR4 optic is compatible with brand equipment (Ethernet switches, routers, and NICs). The 3rd-party 40G

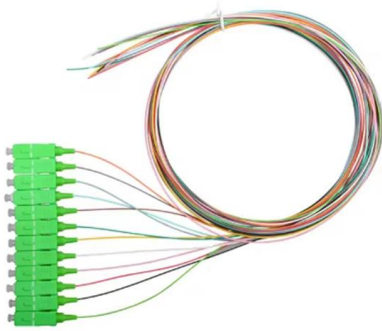
## 40G Optical Transceivers and Cables Portfolio , FS

The 40G transceiver module portfolio offers customers 40Gigabit Ethernet connectivity options for data center, high-performance computing networks, enterprise core and distribution layers, and service



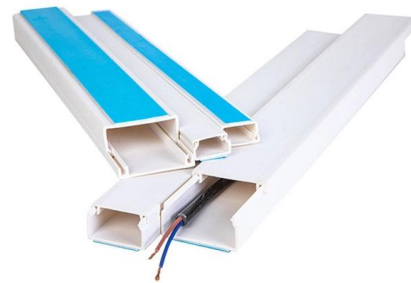
## Panduit Cable Ordering Guide For Cisco 40G Optics

QSFP-40G-CSR4 The QSFP-40G-CSR4 QSFP module extends the reach of the IEEE 40GBASE-SR4 interface to 300 and 400 meters on laser-optimized OM3 and OM4 multimode parallel fiber,



## Cisco

Cisco QSFP-40G-SR4 The Cisco 40GBASE-SR4 QSFP+ Module supports link lengths of 100m and 150m respectively on laser-optimized OM3 and OM4 multimode fiber cables. It primarily enables high



## Dell EMC QSFP-40G-SR4 Compatible QSFP+ Module

THE IT PRO'S CHOICE: Designed and built for IT Professionals, this SFP module is backed for life (lifetime of module, not network switch), including free lifetime 24/5 multi-lingual technical assistance.

## QSFP+ LX4 40GbE Universal Optical Transceiver , GBC

The 40G QSFP+ LX4 optical transceiver transmits data over multi mode or single





## Microsoft Word

40/100GbE Fiber Optic Solutions: Just the Facts  
To support the changing and fast-growing bandwidth demands of Data Centers (DCs), the IEEE recently ratified standards for supporting 40 Gigabit and

## SFP+ 10 Gigabit Fiber Module

Get the most out of your network equipment with this 10 Gigabit 10BaseG-ER SFP+ Fiber Modules from Networx®. SFP or Small Form Pluggable Optical Modules

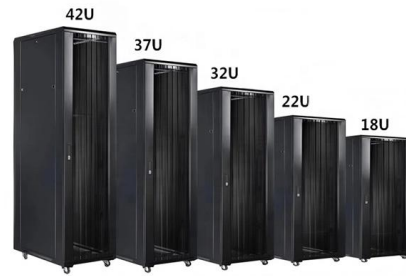


## Cisco 40 Gigabit Modules

Cisco offers a broad range of 40 Gigabit Ethernet interfaces to meet the high-performance connectivity requirements of campus, data center, and cloud

## Optic Modules Datasheet

4 Optic Modules Data Sheet SFP (form factor) = small form-factor pluggable transceiver SMF (media) = single-mode fiber-optic MMF (media) = multimode fiber-optic XFP (form factor) = 10-gigabit small



## 40G QSFP+ Transceiver Modules , Optical Transceivers

FS 40G QSFP+ optical transceiver module solutions offer a full range of QSFP+ modules from 150m to 80km reach, and used for high-density switching, routing and data center applications. [Click to get](#)



## QSFP 40G: Which Transceiver Type Best Suits Your Needs?

Among the most pivotal technologies facilitating this shift is the QSFP 40G (Quad Small Form-factor Pluggable) optical transceiver. This compact, hot-pluggable module is the backbone of



## Seamless Ethernet Migration to 40G/100G with

Discover how to optimize Ethernet migration to 40G/100G networks with multimode fiber, transmission media, and fiber optic transceivers. [Learn the](#)





## 40G Fiber Optic Transceiver Cable Ordering Guide FBSG03-WW

The QSFP-40G-BD-RX is a 40GbE pluggable optical module for use with link monitor hardware, such as Cisco Nexus Data Broker. Like the QSFP BiDi transceiver, it has a duplex MMF LC connector interface.

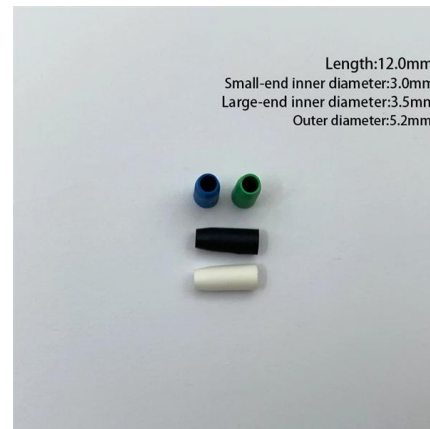


## Arista Optics Modules and Cables

Arista's Optical Modules and Cable portfolio offer a wide variety of high-density and low-power 800G (dual 400G), 400G, 200G, 100G, 50G, 40G, 25G, 10G, 1G, and 100M Ethernet connectivity options

## SFP Optical Transceiver , SFP Optical Module , Perle

For example, by simply replacing the pluggable optical transceiver, a media converter that was originally used in a multimode network can be re-configured to



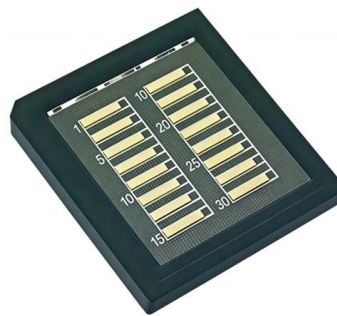
## Arista Optics Modules and Cables

25 Gigabit Ethernet SFP25 Optical Specifications  
When connecting 25G-MR-XSR/LR optics to legacy fixed rate 10G optics, attenuation may be required to ensure the optical input power to the 10G



### MSA Uncoded QSFP+ Module

MSA Uncoded QSFP+ Module - 40GBASE-LR4 - 40GbE Single Mode Fiber (SMF) Optic Transceiver - 40GE Gigabit Ethernet QSFP+ - LC 10km - 1270nm to

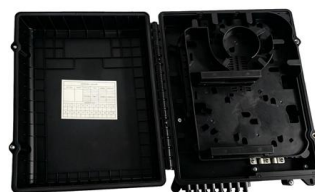


### Dell EMC QSFP-40G-SR4 Compatible QSFP+ Module

Dell EMC QSFP-40G-SR4 Compatible QSFP+ Module - 40GBASE-SR4 - 40GbE Multimode Fiber MMF Optic Transceiver - 40GE Gigabit Ethernet QSFP+ - MPO 150m - 850nm - DDM Learn why IT Pros

### Your Guide to 40GbE and 100GbE Optics

Curvature has put together a brief overview of the current 40GbE and 100GbE optics types and form factors to aid in planning for future high-performance Ethernet needs. Module Types



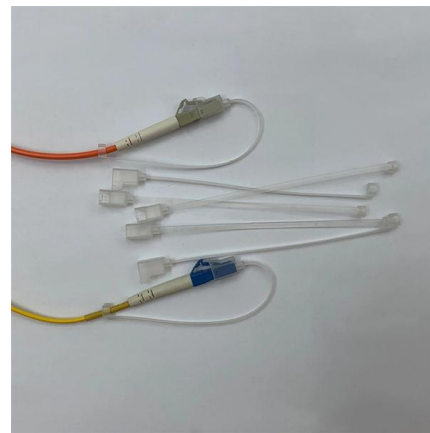


### **StarTech Dual Port 40G QSFP+ Network Card**

StarTech Dual Port 40G QSFP+ Network Card - Intel XL710 Open QSFP+ Converged Adapter - PCIe 40 Gigabit Ethernet Server NIC - 40GbE Fiber Optic

### **Cisco QSFP-40G-LR4 Compatible QSFP+ Module**

Cisco QSFP-40G-LR4 Compatible QSFP+ Module - 40GBASE-LR4 - 40GbE Single Mode Fiber SMF Optic Transceiver - 40GE Gigabit Ethernet QSFP+ - LC 10km -



## **Contact Us**

---

For datasheets, pricing, or custom telecom energy solutions, please visit:  
<https://koskolong.co.za>