



Adam Tas Corridor Energy

485 Communication to Fiber Optic Cable Head





485 Communication to Fiber Optic Cable Head

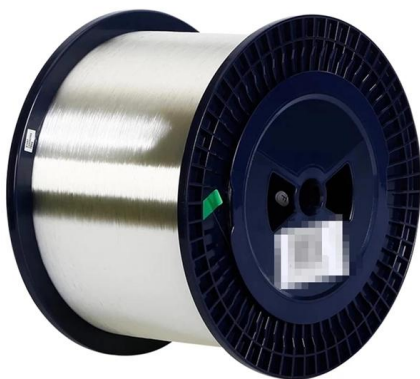


How to Use Universal RS-485 Interface Asynchronous Fiber Modem

Introduction The Universal RS-485 Interface Asynchronous Fiber Modem is a robust communication device designed to extend RS-485 signals over long distances using fiber optic cables. It converts

RS-485 to Singlemode Fiber Optic Converter , rdc485SFO

Our RS-485 to Singlemode Fiber Optic Converter (rdc485SFO) robustly connects your panel mounted RS-485 devices to fiber optic cables up to 20km long, providing the ultimate in isolation, surge, and



RS-485/Modbus Fiber Optic Converter

It supports transmission of one bi-directional data channel over one multimode or singlemode optical fiber. RS232, RS422 and RS485 (2 wire & 4 wire) standards

RS485 4-wire to POF or HCS converter, DL485-4W

The DL485-4W is a RS485 4-wire to POF (Plastic Optical Fiber) or HCS (Hard Clad Silica) fiber optic converter with ST adapter for point-to-point



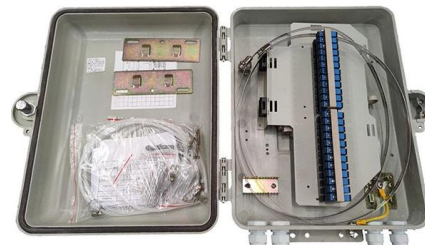
Light Reading

Light Reading is the leading source of news analysis for communications industry professionals.



RS485 Quick Guide

RS485 Quick Guide TIA/EIA-485-A Standard
RS485 conveys data differentially over a terminated twisted pair, permitting up to 10Mbps data rates. The standard specifies electrical characteristics of a



Fiber-optic cable

A fiber-optic cable, also known as an optical-fiber cable, is an assembly similar to an electrical cable but containing one or more optical fibers that are used to carry





"Industrial Communication Protocols: Modbus, RS-485, Ethernet, RS

In this video, we break down and compare the most widely used industrial communication systems in automation and control: RS-232 RS-485 Modbus RTU Modbus TCP/IP Ethernet Fiber Optic Cable Whether



RS232-485-422_Card_U-091.pages

Introduction The Serial Data Fiber Link Card system transports two active channels of copper serial data over fiber optic cable, allowing for both RS-232 and RS-485/422 to be used at the same time. Fiber

RS485 TO FIBER OPTIC REPEATER

RS485 to multi-mode fiber 19.2K to 78 + K baud
RS485 Trunk: Fiber Cable: 18 AWG twisted pair
Two 62.5/ 125mm diameter Multi-mode cable
Separate multi-mode fibers are used for transmit and

An Extensive Library of Self-Developed Products



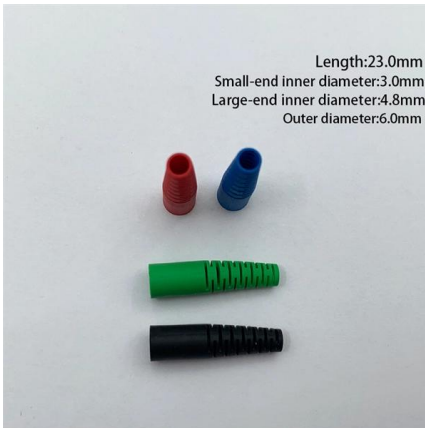
Understanding the Differences Between Common RS485 Cable

This is the simplest form of RS485 cable. Applications: This cable is used in basic RS485 communication setups where the transmission distance is short, and the environment has minimal



RS485 to fiber optic converters, DL485 and DL485-4W

The DL485 and DL485-4W fiber optic systems serve as vital components for connecting field bus systems with RS485 interfaces, enabling safe and reliable



The RS-485 Design Guide (Rev. D)

The RS-485 bus is a distributed parameter circuit whose electrical characteristics are primarily defined by the distributed inductance and capacitance along the physical media, which includes the

RS-485 Design and install best practices

RS-485 Design and install best practices
Guidelines for successful communication
Variable Frequency Drives (VFDs) commonly include embedded fieldbus communications for network control and



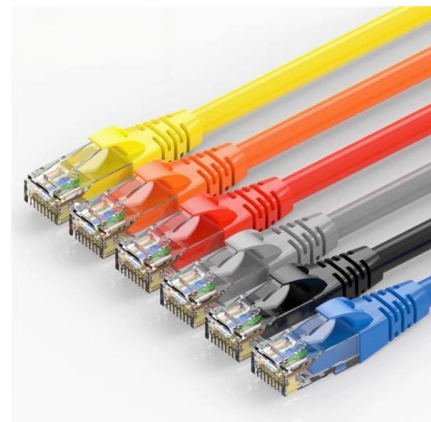


What Is an RS485 to Fiber Optic Converter and How Does It Work?

This device enhances communication reliability in industrial environments by bridging traditional RS485 networks with fiber optic infrastructure, ensuring high-speed, secure, and noise

Serial to Fiber Converter , PSI-MOS-R485/FO 1300 E , Perle

By transmitting serial data over optical fiber, these serial media converters provide an economical path to extend the reach of RS485 devices. All protocols with 10/11-bit UART data format and NRZ data



2 Wire, RS-485 to Fiber Optic Line Driver/Converter

Transmission by fiber optic cable provides the isolation to ameliorate the effects of ground loops. The Model 276A then is an attractive candidate to effect RS-485,

RS485 2-wire to POF or HCS converter, DL485

The DL485 is a RS485 2-wire to POF (Plastic Optical Fiber) or HCS (Hard Clad Silica) fiber optic converter for point-to-point connections with ST adapter.





What is RS-485? Wiring, Communication and Difference

RS-485 (also known as TIA/EIA-485) is a standard interface for physical serial communication. Typical serial communication standards include

F485CT: Fiber-Optic <=> RS485 Converter

User connections are the two fiber ports, a 3 position removable screw terminal



Two Ways of RS485 to Fiber Optic

2. 485 two ways to transfer fiber. There are two types of optical fiber, namely the protocol type and the level type, respectively to ZLAN9153 and ZLAN9163. 1)

MOXA ICF-1150I RS485 TO FIBER CONVERTERS

The converter module accepts the proprietary signals issued by the panel's RS485 circuit and converts the data from serial to fiber and transmits it to the receiving converter module where it is converted



RS232 / RS485 / RS422 to Fiber Optic Converters

Rugged industrial-grade RS232 / RS485 / RS422 to fiber optic converter. Transmits serial data (RS232, RS485 or RS422) over long distances through fiber links (multi-mode: 3 miles or 5 km).

RS485 Standard: Wiring, Modbus, Ethernet, IC Guide

RS485 guide: basics, wiring methods, cable types, Modbus vs Ethernet, IC transceivers, applications, troubleshooting, and BOM support.



Applications of Fiber Optic Transceivers in RS485

By converting electrical signals into optical signals and transmitting them via fiber optic cables, fiber optic transceivers significantly improve the





Ethernet vs RS485: Understanding the Key Differences

Ethernet and RS485 are both powerful communication protocols with unique strengths and applications. Understanding their fundamental differences enables informed decision-making in



Contact Us

For datasheets, pricing, or custom telecom energy solutions, please visit:
<https://koskolong.co.za>