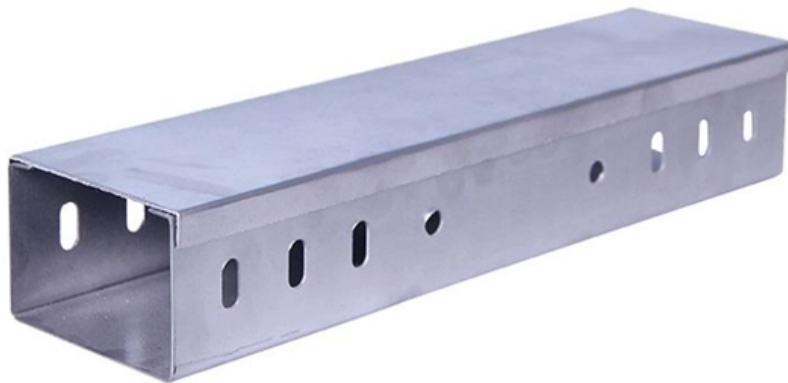




**Adam Tas Corridor Energy**

# **4G Base Station Optical Module Fault Handling Procedure**





## Overview

---

If the fault is caused by the configuration or environment, advise the customer to optimize the configuration or environment. 50 dBm If an FCS or CRC error occurs on a port, check whether the optical fiber is properly connected. Have you ever dealt with sudden network drops from faulty optical modules?

Issues like this cannot only break communications, but they can really jeopardize business continuity. Troubleshooting 4G LTE networks involves a technical understanding of the underlying architecture, protocols, and common issues that may arise. Here's a detailed breakdown of the technical aspects involved in 4G LTE troubleshooting training: Radio Access Network (RAN): This includes base stations.



## 4G Base Station Optical Module Fault Handling Procedure

---



### Fiber Optic Troubleshooting: Expert Guide for Common

Troubleshoot fiber optic issues like a pro with our expert guide. Resolve common problems and ensure seamless connectivity.

### How To Clear RF Unit Optical Module Fault , Huawei BBU

Possible Causes The optical module or electrical module of the RF unit is faulty. Procedure: 1. Check for the correlated alarm. RF Unit Hardware Fault 3. Reset the optical module on site. 4.



### Demystifying Optical Transceiver Failures: Common

explores frequent optical transceiver issues and offers practical solutions, and highlight how LINK-PP optical module can mitigate risks.

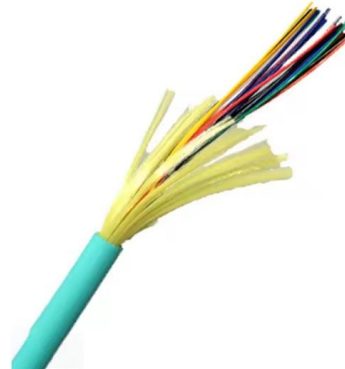


### Optical Module: Typical Optical Module Troubleshooting Procedure

Use an optical power meter to test the receive power of the port and check whether the optical



fiber is disconnected. Use one optical fiber to form a loop on the port to check whether the port goes Up. If



### Fiber Optic Cable Installation and Handling Instructions

Fiber optic cables can be easily damaged if they are improperly handled or installed. It is imperative that certain procedures be followed in the handling of these cables to avoid damage and/or limiting their

### Troubleshooting 4G Alarm Issues , PDF , Manufactured

This document provides information about 4G alarms, their codes, and troubleshooting steps. It describes alarms such as 7100 for inability to



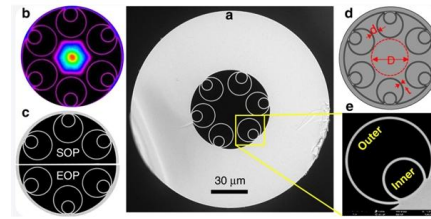
### Description and symptoms Fault Failure in optical interface 3030 is

Description and symptoms o Fault Failure in optical interface (3030)is active. Solution Before the detailed troubleshooting procedure, check if the fault can be solved by: o troubleshooting



## Fault Analysis and Handling of Optical Modules

The daily use of optical modules may encounter various problems, and I do not know how to solve them. The following will introduce the causes of various problems and how to deal with them.



## Nokia Wireless Site Alarm Troubleshooting Guide

2) Hardware faults affecting antennas, RF modules, and optical interfaces. 3) Software and licensing issues around incompatible versions, expired licenses,

## GTP-U Path Failure Troubleshooting Guide

This document provides information about common 4G alarms, their causes, and troubleshooting steps. The 7100 alarm occurs when the RF module is not



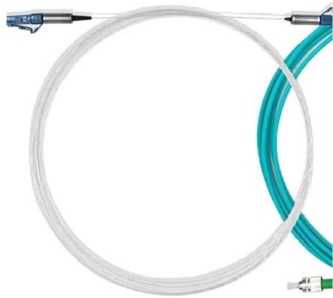
## Safety Procedure copy

This document describes some basic safety information applicable to Optical fiber cable installation & storage. Personnel involved in Optical fiber cable installation must be aware of all the applicable



## 5 OFWEX008L gNodeB NR Basic Fault Analysis and

This document provides a comprehensive guide on fault analysis and handling for gNodeB NR systems, outlining objectives, common fault types, and



## Troubleshooting Optical Module Issues

Check whether the transmit optical power and receive optical power of the optical module are within the normal range. If the transmit optical power is beyond the normal range, replace the

## Which Optical Modules Are Commonly Used In 4G Base

In this blog, ETU-LINK will talk about 4G base stations and common types of optical modules. The base station can be divided into two modules: the RRU for



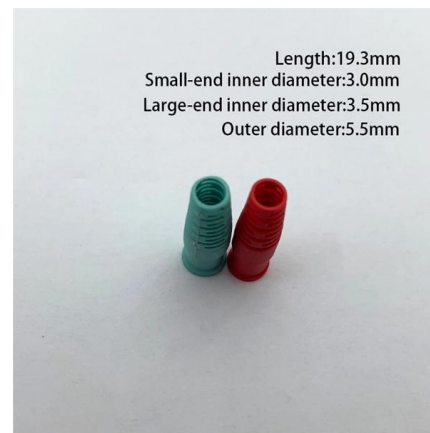


## Optical Module: Typical Optical Module Troubleshooting Procedure

If the optical module is faulty, replace it with the spare part. If the fault is caused by the configuration or environment, advise the customer to optimize the configuration or environment.

### BBU Optical Module Transmit/Receive Fault

1. BBU Optical Module Transmit/Receive Fault 2. RF Unit Maintenance Link Failure The results of this alarms was restarting of the RF unit. After combining the RRU log analysis and the alarm of the



### (PDF) How to Fix CRC Errors on Transmission links for

In data communication, the receive end needs to detect whether any error occurs during data transmission. Common technologies for the error



### Analyzing Abnormal Situations During Installation and Use of Optical

As core components of optical communication systems, the proper installation and use of optical modules directly impacts network stability. This article systematically identifies common

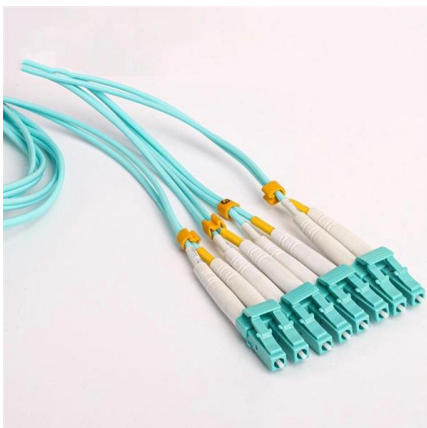


## Fiber Optic cable Series-

1. Overview This document presents a troubleshooting guide for fiber optic cables once deployed and in regular use. It also includes a list of common fault location items. Maintenance personnel can refer to

## WSS 4G System Base-Station Installation Manual

This section presents the physical characteristics of the WSS 4G System, including the Aircraft Base Radio (ABR), Full Duplex Quad (FDQ) Antenna, and High- Performance Blade (HPB) Antenna.



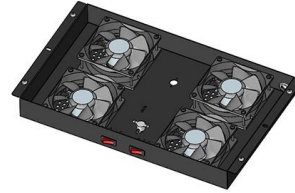
## Optimization of Base Station Placement in 4G LTE Broadband

This paper uses a field measurement-based genetic algorithms approach to optimize base station placement in cellular networks. The proposed method explores the combined impact of



## **HISILICON Optical Modules in the field of communication base stations**

In addition, the optical module in the base station can also be used to achieve fiber backhaul connection, the base station signal back to the data center or the operator's core network,



## **Optical Module Failure Diagnosis and Prevention:**

A comprehensive guide on Optical Module Failure diagnosis and prevention to maintain network stability through effective troubleshooting,

## **Accurate Base Station Placement in 4G LTE Networks**

A related study proposed a multiobjective metric method to handle base station placement in WSNs. The metrics are coverage, fault



## **4G LTE troubleshooting training**

Troubleshooting 4G LTE networks involves a technical understanding of the underlying architecture, protocols, and common issues that may arise. Here's a detailed breakdown of the



## Base Station Alarm Handling Guide

Base Station Alarm and Notification Handling Reference (GULI) - Free download as Excel Spreadsheet (.xls / .xlsx), PDF File (.pdf), Text File (.txt) or read online for



## Operational Fault Detection in Cellular Wireless Base-Stations

Operational Fault Detection in Cellular Wireless Base-Stations Sudarshan Rao IEEE Transactions on Network and Service Management 2006

## Optical module common faults and solutions

In this article, we will focus on teaching you how to troubleshoot and solve the common three categories of optical module failure. First, the transmission class of the optical module fault





## **Preventive Maintenance of Fiber Optic Cables and Optics**



OF FIBER OPTIC CABLES AND OPTICS cable and the inner surface of an optical module lens surfaces that should be properly cleaned and maintained to reliability and system performance. Small oil micro

## **Contact Us**

---

For datasheets, pricing, or custom telecom energy solutions, please visit:  
<https://koskolong.co.za>