



**Adam Tas Corridor Energy**

## **5-meter span cable tray**





## 5-meter span cable tray

---



### Cable Tray Et5 Galvabond 300mm 3M

The ET5 tray offers a 78mm cable laying depth, with widths from 150-600mm, and standard lengths of 3m. It's the ideal easy to install alternative to a traditional cable ladder system. ET5 cable tray is

## Chapter 14 Cable Support systems

The use of basket tray is typical for light weight last meter cable runs in onshore applications. The use of ventilated cable tray is common for heavier weight cables and offers more protection in offshore



### Buy Ezystrut , ET5450G , Cable Tray Et5 Galvabond 450mm 3M , Cable

Product Details EzyStrut's ET5 cable tray provides the ultimate performance for medium to heavy duty electrical installations with greater spans and higher load characteristics when compared to other

## Product Specifications: CABLE TRAY

FDG CABLE TRAY ng; Power, Data, and Audio Visual. A quick and easy system to install without the need for specialised tools or equipment,



makes it a first choice for Comm solution that works for your



### 26 05 36 Cable Trays for Electrical Systems

span and tested per NEMAVE 1 5.2. In addition to the uniformly distributed load the cable tray shall support 200 lbs. concentrated load at mid-point of span. Load and safety factors specified are

### Cable Support System Requirements

This makes MACs a cinch. The recommended span between Unipath support arms is 4-5 ft, ensuring that cables see minimal sagging. Compared to other cable



### Large Span Cable Trays Lay Heavy Cables in Industries

Large span cable trays can be divided into ladder style, channel style, perforated style with galvanized, powder coated surface to resist corrosion. They are widely





## Cable Tray Sizing & Load Calculations Made Simple

Pick a span (often 1.5-3 m) and verify the uniform load rating exceeds your cable weight plus a safety factor. Check deflection limits to protect terminations and fibre.

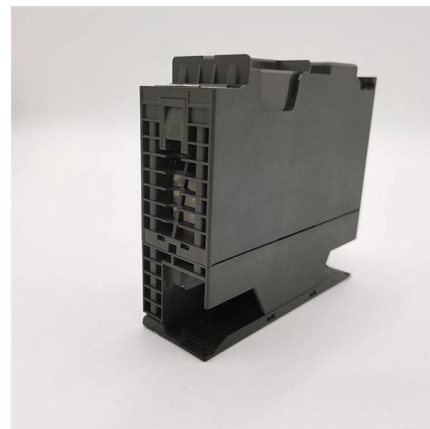


## Cable Tray ET5 Hot Dip Galvanised 450mm 3M

ET5 cable tray is highly regarded for light to medium duty commercial and industrial electrical installations. ET5 is manufactured from pre-galvanised steel for a long lasting, clean finish for interior

## MECHANICAL PROPERTIES OF CABLE TRAY - K?raç

Support Span: Strength of a cable tray system is largely determined by the strength of its side rails. The strength of a side rail is proportionate to the distance



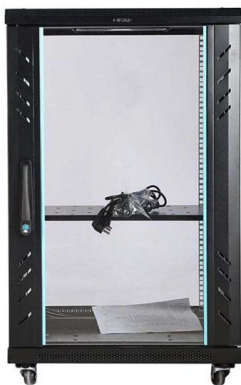
## B-Line series Cable Tray Design Considerations

Our wind certification report provides you with list of acceptable B-Line series cable tray supports, fittings and covers based off of the environmental conditions, cable loading, and type of cable tray in your



## How Far Can Cable Tray Support Span?

In the world of electrical infrastructure, cable trays play a pivotal role in supporting and organizing electrical cables. These unassuming metal or plastic



## Wire Mesh Cable Trays Technical Information Detailed,

Wire Mesh Cable Tray Installation Notice: Bends, Risers, T Junctions, Crosses and Reducers can be made from wire mesh cable tray straight sections flexibly in

## GUIDE CABLE TRAYS TECHNICAL

NEMA VE 1-2017 Specifies requirements for metal cable trays and associated fittings designed for use in accordance with the rules of Canadian Electrical Code, Part I and the National Electrical Code®





## Guide to cable support systems

The load capacity of the cable trays according to the support width can be read off in the diagram using load curves - here, shown as an example for a cable tray with the tray widths 100 to 600 mm.

## TECHNICAL AND SIZING DATA

The supports are not placed at the ends of each tray sections, but instead are located at a distance no greater than 1/4 of the length of the tray (e.g. 1.5 meters for a 6 meter tray).

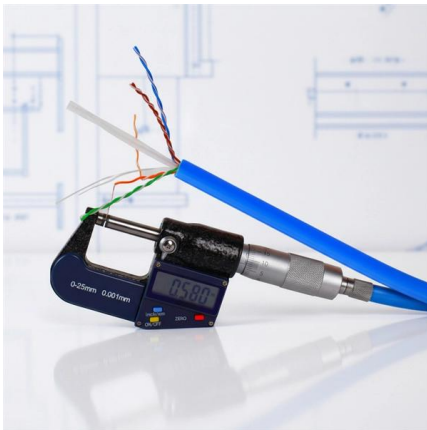


## B-Line series Cable Tray Design Considerations

As an industry leader in cable tray, Eaton offers one of the widest ranges of cable management solutions available in the market today with its B-Line series portfolio. With unmatched quality and service, we

## Cable Tray Technical Guide A practical guide to product selection and

Cable tray length is selected based on the load to be supported, the distance between the supports (also referred to as the span), and handling and installation constraints.



## **Cable Tray Technical Guide A practical guide to product selection and**

Cable Tray Technical Guide A practical guide to product selection and installation This guide for engineers and installers has been developed by ABB as a practical reference regarding cable tray

## **CABLE TRAY SYSTEMS GUIDE**

Some applications may require the cable tray to support the weight of a single, dead object in addition to the cable loads. Specifications typically require this to be applied at the midpoint of the span between



## **CABLE TRAY SYSTEMS GUIDE**

Hubbell's NEXTFRAME® Ladder Tray is the effective and widely used cable runway that supports and delivers bundles of cable between cabinets, racks, and closets, along walls, and suspended from



## An In-depth Analysis for Optimal Cable Tray Support Span

The constructability for the longer span obtained from finite element analysis has been validated in view of manual handling of the cable tray.



## Cable Trays

Cable trays and ladders are standardly produced in 3-meter lengths but can also be manufactured in 6-meter lengths if desired. Fully automatic production lines using

## Cable Tray Design and Sizing Guide

The document discusses several key factors to consider when designing a cable tray system, including: 1) The width and height of the tray, type of tray bottom (ladder, ventilated, or solid), and type of



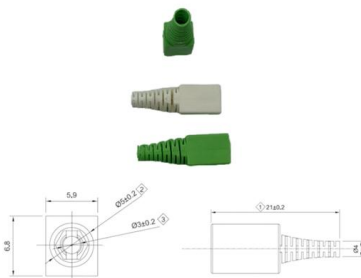
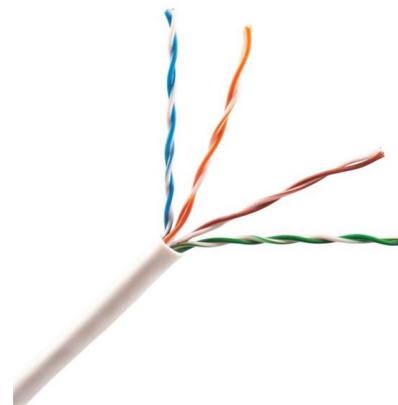
## cable tray Manufacturer/Producer , B2B companies and suppliers

416 suppliers for cable tray  
Manufacturer/Producer Find wholesalers and contact them directly B2B marketplace Find companies now!



## Cable Tray Dimensions Guide: Standard Sizes, Tray

Explore standard sizes by tray type, understand width and depth limits, and see how to calculate and choose compliant cable tray sizes for real projects.



## Guide to cable support systems

Widths of 8 and 15 millimetres enable flexible adjustment to different cable trays, cable ladders and cable volumes. With the help of the matching SBV tightening strap locks and 576 spring chuck, the

## Contact Us

For datasheets, pricing, or custom telecom energy solutions, please visit:  
<https://koskolong.co.za>