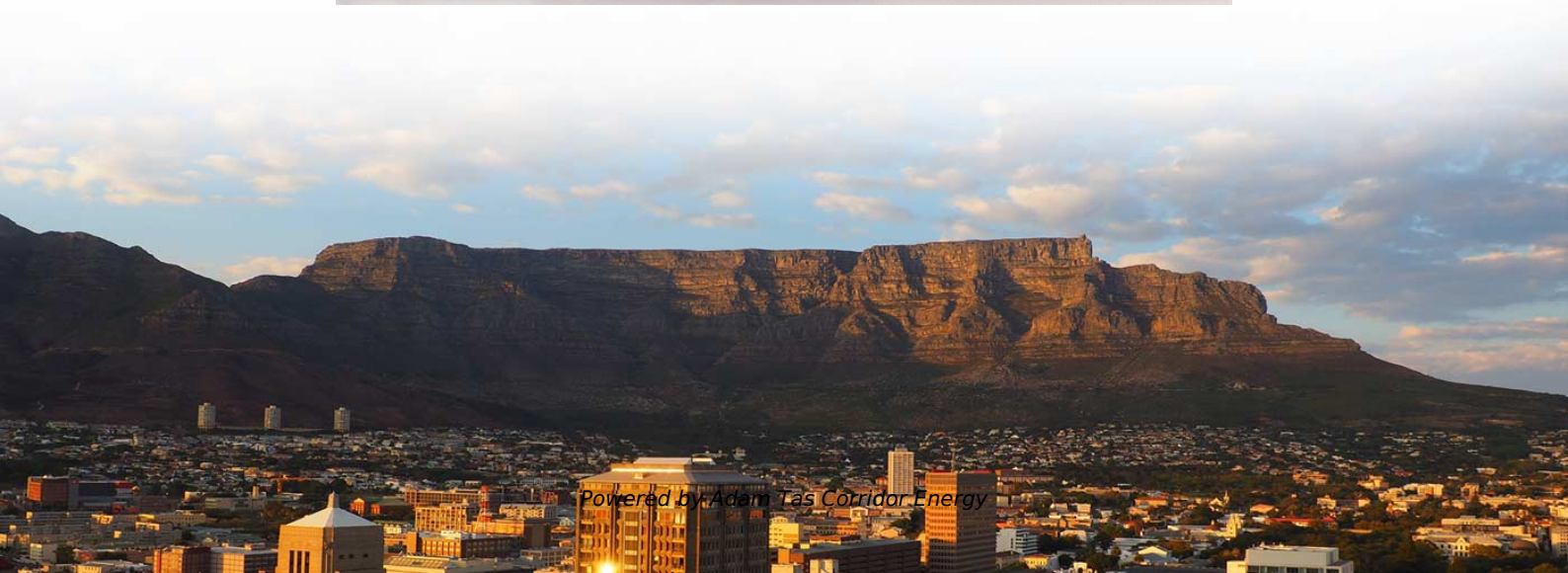




Adam Tas Corridor Energy

630kVA High Voltage Relay Protection Setting Value





630kVA High Voltage Relay Protection Setting Value

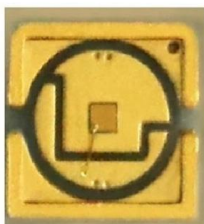


Motor Protection and Control REM630 Numerical motor protection in

Numerical motor protection in medium voltage networks The freely configurable relay is intended for protection, control, measurement and supervision of medium-sized and large asynchronous and

Welcome to Eastern Regional Power Committee ::

Welcome to Eastern Regional Power Committee
::



Engineering Manual 630 series RELION® PROTECTION AND

Introduction This manual er the protection relays using the different tools in PCM600. The manual provides instructions on how to set u a PCM600 project and insert relays to the project structure. The

Generator protection and control REG630 IEC

Flexibility and high functionality for generator protection and control applications Not active

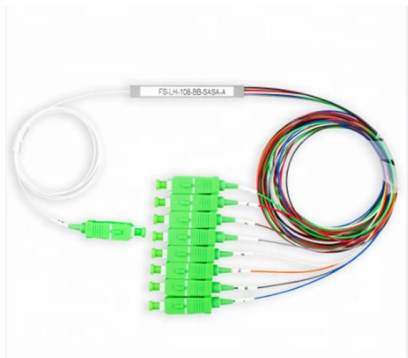


product since 2024 REG630 is a comprehensive generator management relay for the protection, control,



Relay Settings Calculations

To avoid relay mal-operation, set Slope 2 as high as possible. Normally, a high Slope 2 setting causes slow tripping for evolving faults (external-to-internal faults).



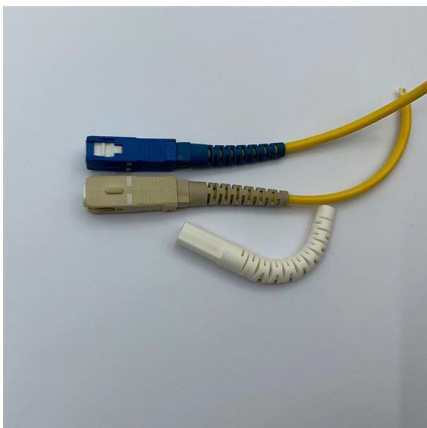
REG630 Application Manual

REG630 Application Manual - Bay control and measurement - Motor protection - Transformer protection - 2 winding - Feeder protection - Voltage regulation - Busbar protection (voltage and frequency) -



Commissioning Manual 630 series RELION® PROTECTION AND

This manual contains instructions on how to commission the protection relay. The manual can also be used by system engineers and maintenance personnel for assistance during the testing phase. The





CHAPTER-3

Protective relay must be isolated from the high-voltage system but require current and voltage quantities proportional to those on the electric supply system. The standard ratings for protective relays are



ABB RELION 630 REG630 Guide , AI Chat & PDF

It features non-directional and directional overcurrent and earth-fault protection, over/undervoltage protection, and generator-specific functions. The relay

630 series Generator protection and control Flexibility for demanding

Complete generator protection and control with extensive interconnection protection for distributed generation REG630 is a comprehensive generator management relay for protection, control,



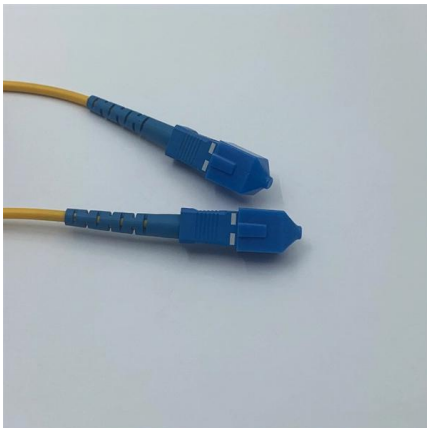
Operation Manual 630 series RELION® PROTECTION AND

Do not switch off the auxiliary power supply to the protection relay before changes, for example, setting parameter or local/remote control state changes are saved.



Generator Protection and Control REG630

The relay shall have comprehensive voltage protection functionality, including at least overvoltage(59), undervoltage(27), positive-sequence overvoltage(47O+), positive-sequence undervoltage(47U+),



Product Guide REU615 Voltage Protection and Control

1. Description The voltage protection and control relay REU615 is available in two standard configurations, denoted A and B. Configuration A is preadapted for voltage and frequency-based

Product Guide REM630 Motor Protection and Control

1. Description REM630 is a comprehensive motor management relay for protection, control, measuring and supervision of medium and large synchronous and asynchronous motors in medium voltage



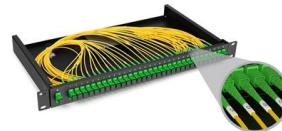


Motor protection and control REM630 IEC

Motor protection and control REM630 IEC
Flexibility and high functionality for motor protection and control applications Not active product since 2024 REM630 is a comprehensive motor management

Relion® 630 series Protection and control relay

The 630 series covers protection and control relays designed for feeder, motor, transformer and generator management in utility, industrial, and transport and infrastructure applications.



Application Manual REG630 Generator Protection and Control

for protection and interlocking-based protection schemes. The protection relay meets the GOOSE performance requirements for tripping applications in distribution substations, as defined by the IEC

Feeder Protection and Control REF630 Product Guide

1. Description REF630 is a comprehensive feeder management IED for protection, control, measuring and supervision of utility and industrial distribution substations. REF630 is a member of ABB's



ABB RELION 630 REG630 Guide , AI Chat & PDF

The protection relay also measures phase and phaseto-phase voltages, symmetrical components of the voltages and the residual voltage. In addition, the protection



Relay Settings Calculations

This technical report refers to the electrical protections of all 132kV switchgear. All calculations are based on the available documentation/ information. These settings may be reevaluated during the



ABB Relion® 630 series Feeder Generator protection and control

REG630 has been extended with low-voltage ride-through, reactive power undervoltage and voltage vector shift protection to further ensure grid stability and reliability, and thus avoid grid





Generator protection and control REG630 IEC

REG630 is a comprehensive generator management relay for the protection, control, measurement and supervision of small and medium sized power generators and generator-transformer units in utility



Quick Start Guide Relion® 630 serie

Changing the overcurrent start value ns only one setting group by default. The number of setti Protection ->

Power Relays Application Guide

Since the relay potential connections must be made phase-to-phase, a 208 volt relay should be selected. A range should be selected so that a pick-up setting of 125 watts or less can be made.



High-Impedance Differential Protection Technical Note

The value of the primary current (I_{prim}) at which the protection operates at certain setting can be calculated using the formula: $I_{prim} = n (I_{relay} + I_u + m I_m) (7)$



Setting the generator protective relay functions

Protective relay functions and data This technical article will cover the gathering of information needed to calculate protective relay settings, the setting



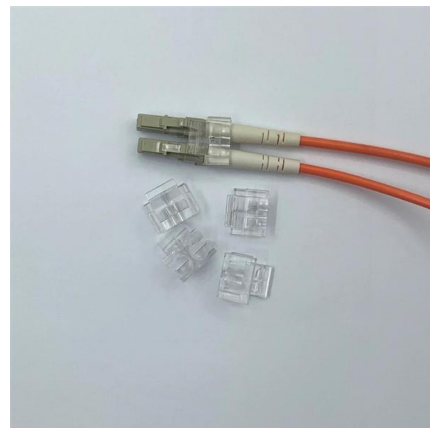
Generator Protection and Control REG630

The relay shall have comprehensive machine/ generator differential protection, including both three-phase differential protection (87G/M) with one low-set (biased) and one high-set (instantaneous)



Feeder Protection and Control REF630

Feeder Protection and Control REF630 Numerical feeder protection in medium voltage networks The freely configurable relay is intended for protection, control, measurement and supervision of the





Relay Protection in HV/MV Substations: Calculations,

Effective relay protection depends on accurate calculations, optimal settings, careful coordination, appropriate selection of relays, and thorough

Contact Us

For datasheets, pricing, or custom telecom energy solutions, please visit:
<https://koskolong.co.za>