



**Adam Tas Corridor Energy**

# **90-degree angle cable tray**





## Overview

---

A perforated type cable tray vertical inside bend is a fitting used to change the direction of a cable tray system vertically, typically at 90-degree angles, allowing cables to turn upwards or downwards within a confined space. 5625" W x 9" L, Aluminum, 12" radius, 90° angle, Horizontal bend Note: If file (s) are missing from the. Elbow joint RVS is pushed inside the cable tray and attached with the included screw set.



## 90-degree angle cable tray

---



### 4A-09-90HB12 , Eaton B-Line series horizontal bend

4A-09-90HB12 - Eaton B-Line series horizontal bend, 4" H x 19.5625" W x 9" L, Aluminum, 12" radius, 90° angle, Horizontal bend

### How to make 90° degree (45°x2) Cable trays/Trunking (100mm X

90° Bend (45° x 2) Formula How to make 90° degree (45°x2) Cable trays/Trunking (100mm X 50mm) Practical tutorial 1



Hier sollte eine Beschreibung angezeigt werden, diese Seite lässt dies jedoch nicht zu.



### High-quality cable tray brackets

Discover a selection of cable trays with a 90° angle at Ekabel24 . Perfect for laying your cables neatly and tidily.



### **Cable Tray, 90 Degree Bend MFR 100mm**

Cable Tray, 90 Degree Bend Medium Return Flange 100mm, Pre-Galvanised SKU Number: 2531280 Available for backorder More stock is expected on 24th April 2026 03:01pm Stock



### **300mm Medium Duty Cable Tray Flat 90 Degree Bends (MDT300FB)**

Unistrut Cable Tray Medium Duty Flat Bend 90 Degree 300MM Pre-Galvanised (TUMB300/90PG) Medium Duty Cable tray comes with a height of 25mm. Bends come pre made in 90 & 45 degree



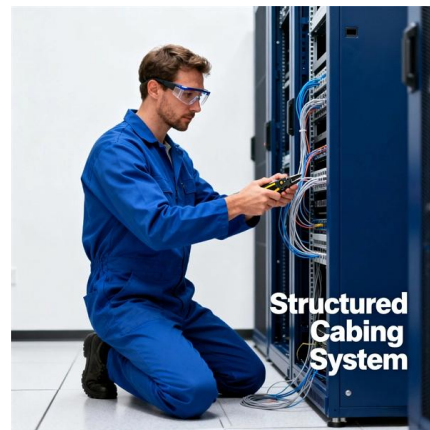
### **Medium Duty Cable Tray 90? bend**

The cable tray products are designed for use in numerous commercial and industrial applications. Available in standard and bespoke sizes with various finish options.



## How to make a 0-90° vertical angle for cable trays?

Elbow joint RVS is pushed inside the cable tray and attached with the included screw set. Elbow joint RVS can be used to change a cable tray's horizontal orientation



## B-Line (Eaton) KR4A09-24-90VO24 KwikRail Cable Tray, Horizontal

Shop KwikRail Cable Tray, Horizontal Bend Fitting, 4" Height, Aluminum, 9" Rung Spacing, 24" Width, 90-degree Angle, 24" Radius By B-Line (Eaton) (KR4A09-24-90VO24) At Graybar, Your Trusted

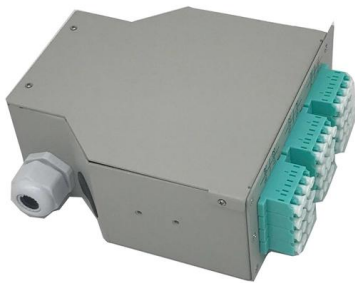
## Cablofil Electro Zinc Steel Wire Cable Tray 90° Angle

Cablofil Electro Zinc Steel Wire Cable Tray 90° Angle Support REF. CM840231



### **B-Line (Eaton) KR4ASB-18-90HB12 KwikRail Cable Tray, Horizontal**

Shop KwikRail Cable Tray, Horizontal Bend Fitting, 4" Height, Aluminum, Solid Bottom, 18" Width, 90-degree Angle, 12" Radius. By B-Line (Eaton) (KR4ASB-18-90HB12) At Graybar, Your Trusted



### **Cable Tray, 90 Degree Bend MFR 100mm , Cable Trays , Channel**

Cable Tray, 90 Degree Bend Medium Return Flange 100mm, Pre-Galvanised SKU Number: 2531280 Available for backorder More stock is expected on 24th April 2026 03:01pm Stock



### **90° Horizontal Elbow , Cable Tray Systems , PUPCO**

Discover our 90° Horizontal Elbow for cable tray systems. Contact us today for availabilities and receive a quote. Fast shipping guaranteed



## 90° Vertical Inside Cable Tray Bend

Cable Tray Vertical Inside Bend, 6" H x 33.18" W x 18" L, Aluminum, 24" Radius, 90° Angle Item #: 435782 CAT #: 6A-18-90VI24 UPC: 781011208950



## Shop 90 Deg Horizontal Bend Cable Tray, Pre Galvanized Steel, OF

Horizontal 90 degree bend perforated electrical cable tray, produced by BAHRA company. Used for changing the direction of cable tray by 90 degrees, this cable tray offers exceptional flexibility and

## Perforated Vertical Outside Bend , Pratik Cabletray System Pvt. Ltd

A perforated type cable tray vertical inside bend is a fitting used to change the direction of a cable tray system vertically, typically at 90-degree angles, allowing cables to turn upwards or downwards within



## Galvanized Iron Bend Cable Tray, 90 Degree

Description: Galvanized Iron Bend Cable Tray is designed to change the direction of cable routes smoothly while maintaining strong support and organization. Made from durable galvanized iron, it



### **B-Line (Eaton) KR6A09-24-90HB24 KwikRail Cable Tray, Horizontal**

Shop KwikRail Cable Tray, Horizontal Bend Fitting, 6" Height, Aluminum, 9" Rung Spacing, 24" Width, 90-degree Angle, 24" Radius. By B-Line (Eaton) (KR6A09-24-90HB24) At Graybar, Your Trusted



### **Steel Cable tray vertical outside bend, 90 Degree**

V-Fit Engineering - Offering Steel Cable tray vertical outside bend, 90 Degree at INR 370/piece in Ahmedabad, Gujarat. Also find Cable Tray Bend price list , ID:

### **Stainless Steel Galvanized Coating Cable Tray**

We are the leading supplier of Cable Tray 90 Degree Bend. These are made from high quality raw materials. These are manufactured as per clients requirement





## Cable Tray Flat Bends , Cable Management , Metsec

Cable Tray Flat Bends Metsec Cable Tray Flat Bend Dimensions: 45° & 90° flat bends are available for light, medium and heavy duty cable tray systems with

## GI 90 Degrees Bend Cable Tray

Air Brill Hvac System - Offering GI 90 Degrees Bend Cable Tray at INR 100/piece in Chennai, Tamil Nadu. Get Cable Tray Bend at lowest price , ID: 2852143345112



## 90 Degree Flat Bend Medium Duty Tray ,, British Made

Order medium duty cable tray 90 degree flat bend (Built in Couplers) online now. They are made of stainless steel and have a sharp 90 internal angle.

## StarTech CBMWWD1911L Wall Cable Raceway with Adhesive

This 20-pack of raceway lateral elbows work with the StarTech CBMWWD1911 raceway system. Join Two Raceways Together and Run them up the Wall at a 90 Degree Angle Use these



### **Cable Tray Angles**

Cable tray angle (999+ products available)  
Premium Stainless Steel Perforated Cable Tray  
Precision-Made 90-Degree Right Angle Bend  
Fitting \$ 2.90 - 7.90 MOQ: 199

## **Contact Us**

---

For datasheets, pricing, or custom telecom energy solutions, please visit:  
<https://koskolong.co.za>