



Adam Tas Corridor Energy

90-degree horizontal bend in fire cable tray





90-degree horizontal bend in fire cable tray

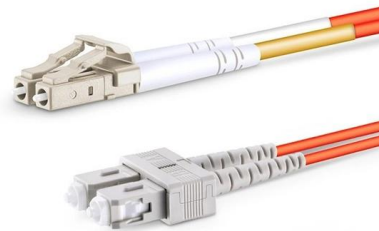


90° Horizontal Bend - Infinite Engineering

90° bend, horizontal, for all cable tray types of the series GKS of 60 mm side height.

90 Deg Horizontal Bend Cable Tray, Pre Galvanized Steel, Outside

Horizontal 90 degree bend perforated electrical cable tray, manufactured from pre galvanized steel (GI), outside flange, 1.5mm thick, 60mm height, 100mm width, produced by BAHRA company, this cable



Cable Tray Technical Guide A practical guide to product selection and

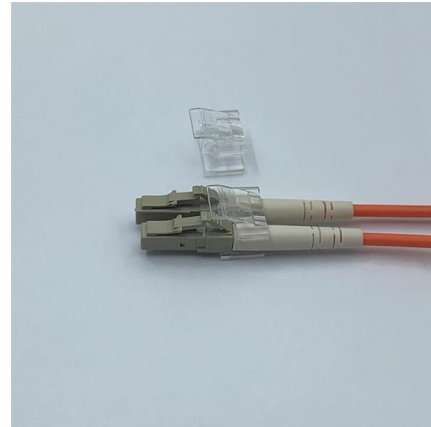
A practical guide to product selection and installation This guide for engineers and installers has been developed by ABB as a practical reference regarding cable tray characteristics, installation, and

4A-09-90HB12 , Eaton B-Line series horizontal bend

4A-09-90HB12 - Eaton B-Line series horizontal bend, 4" H x 19.5625" W x 9" L, Aluminum, 12"



radius, 90° angle, Horizontal bend



Horizontal Cable Tray Bend, 90 Degree

Deep Enterprises - Offering Horizontal Cable Tray Bend, 90 Degree at INR 235/piece in Greater Noida, Uttar Pradesh. Get Cable Tray Bend at lowest price , ID:



12.2.2.2. Medium Duty-90 Degree Cable Tray Bend (Thickness 1.5 mm)

This design meets industry standards (e.g., NEMA VE-1, IEC 61537) for load-bearing capacity, fire resistance, and durability. This design makes it easy for technicians to access cables for



90 Degree Stainless Steel Ladder Cable Tray Bend , NEMA 20C

Description This robust 90-degree horizontal bend is designed for ladder cable tray systems, providing a smooth transition for cables while maintaining structural integrity. Manufactured from durable





90° Horizontal Cable Tray Bend :: PLATT ELECTRIC SUPPLY

90-Deg Horizontal E-Bend Section (cULus Classified) is a cable runway for horizontal direction change. This 90-Degree Horizontal E-Bend Section (cULus), L90HB18BLK item fits 18.00in with a material of



Putting a 90 degree bend into Cable Tray

In this clip, David from EzyStrut has a length of EzyTray. He is going to show you how to use EzyStrut's ET/ET3/ET5 Radius plate to create a 90 degree bend in a piece of these cable trays

Make a 90 Bend in Electrical Cable Tray

The Easy Guide to How to make a 90 electrical cable tray bend to measurement of your choice. Great if you are new or just forgot how to do it, this easy

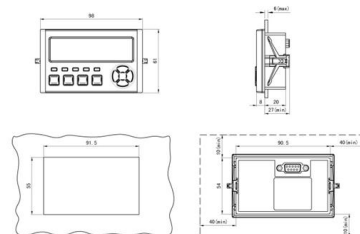


ABB SHF309LHB9024 90° Bend Ladder, Perforated Rung, Horizontal

Cable tray bend made of steel with ladder style, 90 degree horizontal bend fitting. Manufactured with 9 inch rung spacing measured at the center line of fitting and includes exclusive Ty-Rap® cable tie



AUF509LHB9036 , Bend for cable tray , T& B Cable Tray , Wire & Cable

T& B Cable Tray Bend for cable tray View Larger Representative Image Catalog No. : AUF509LHB9036 Description: AL FIT 5IN 9W LAD HOR. BEND 90D36R UPC: 626490672833 Made or assembled in



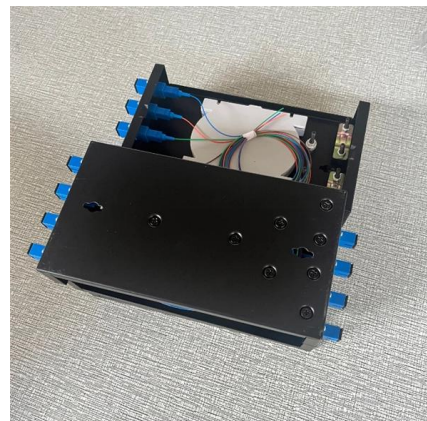
electrical #cable tray# making 90,° elbow

Creating a 90-degree elbow in an electrical cable tray, often called a "fabricated" or "mitered" bend, involves cutting, bending, and fastening a straight section of tray. The most common



AshwinD24's gists · GitHub

GitHub Gist: star and fork AshwinD24's gists by creating an account on GitHub.





Horizontal Bend , Ramdev Steel Industries

90° bend, horizontal, for all cable tray types of 50 mm side height. Including appropriate fastening material.

FRP Cable Tray Horizontal Bend , Pratik Cabletray

An FRP (Fiberglass Reinforced Plastic) cable tray horizontal bend is a fitting used to change the direction of an FRP cable tray system horizontally, typically at a 90

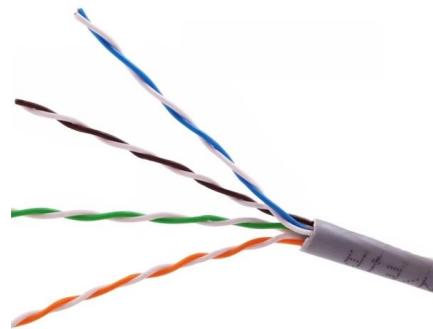


HOW TO BEND 90 DEGREE OF CABLE TRAY SUPPORT TO SUPPORT BASIC TUTORIAL

In the electrical wiring of buildings, a cable tray system is used to support insulated electrical cables used for power distribution, control, and communication.

90° Horizontal Bend - Infinite Engineering

90° Horizontal Bend Highlights 90° bend, horizontal, for all cable tray types of the series GKS of 60 mm side height.

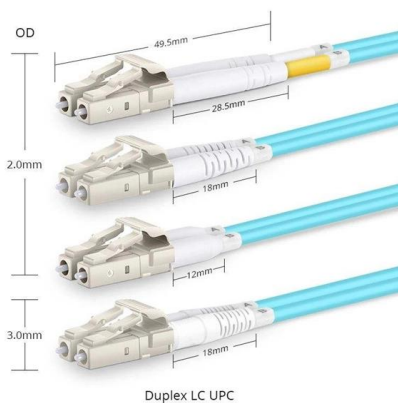
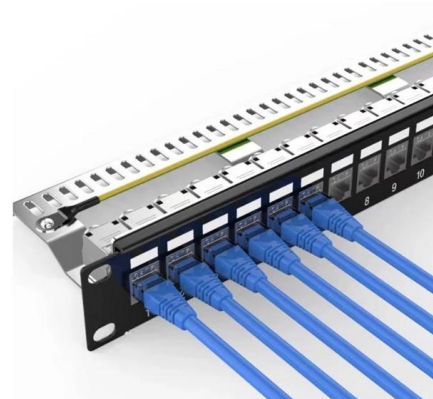


Fiberglass cable tray 90 degree horizontal bend assembly submittal

90-degree horizontal bend assembly for fiberglass cable trays, designed for efficient cable management and routing in industrial environments.

Cable tray horizontal bends , Information by Electrical Professionals

Ladder style, 48" wide 6" tall aluminum I beam, open bottom 6" rung spacing. Manufacturer offers factory bends 30 degrees to 90. We are installing tray around a clarifier at a



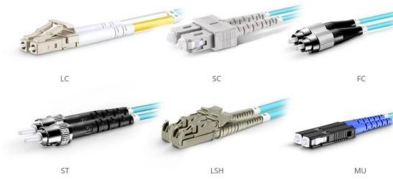
Cable Tray & Trunking 90 Degree Bend Cutting

Cable Tray & Trunking 90 Degree Bend Cutting Measurements A to Z? Cable Tray 90 Degree Bend Formula In this video you can learn how to take correct



Perforated Cable Trays 90 Degree Horizontal Bend

We can provide you with any type and any material of cable tray. We not only have our own warehouse and production workshop, but also have a huge galvanizing



OM3 Fiber Patch Cable Family

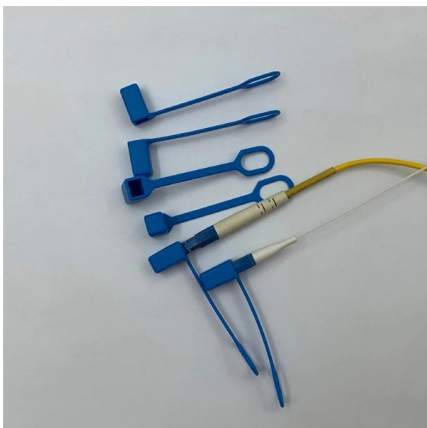


Cable Tray & Trunking 90 Degree Bend Cutting Measurements A to Z? Cable

Cable Tray & Trunking 90 Degree Bend Cutting Measurements A to Z? Cable Tray 90 Degree Bend Formula In this video you can learn how to take correct measureme

HOW TO FABRICATE (INSIDE ELBOW)AND(OUTSIDE ELBOW) 90 DEGREE

How to bend 22.5 degree of cable tray 3 layer with the same distance and gap <https://youtu.be/OnGSboipmm4>How to bend 90 degree of cable tray 3 line with the



WireMesh Tray Horizontal Bend

Belden provides the information and specifications herein on an "ASIS" basis, with no representations or warranties, whether express, statutory or implied. In no event will Belden be liable for any damages



Ladder Type Cable Tray Horizontal Bend , Pratik

A ladder type cable tray horizontal bend is a fitting designed to facilitate a smooth 90-degree change in the horizontal direction of a ladder cable tray system. This



Contact Us

For datasheets, pricing, or custom telecom energy solutions, please visit:
<https://koskolong.co.za>