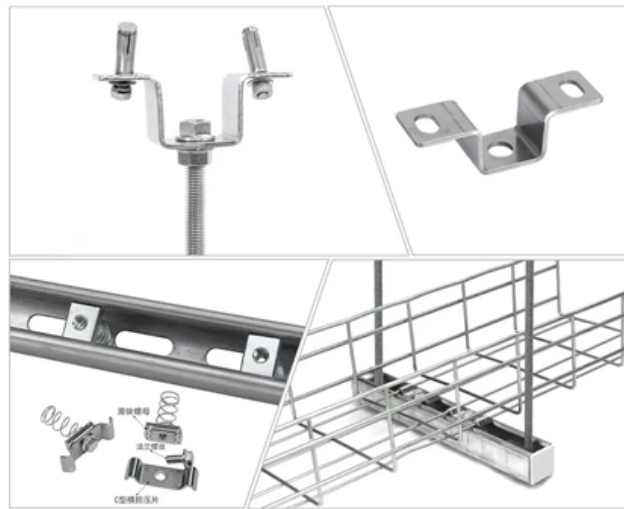




# AI Server Power Increment





## Overview

---

The rise of artificial intelligence (AI) has resulted in a significant increase in power demand in data centers. Where traditional server racks once operated at around 5–10 kW, modern AI environments are pushing far beyond that, often reaching 30 kW, 60 kW or even over 100 kW per rack. AI data centers are consuming energy at roughly four times the rate that more electricity is being added to grids, setting the stage for fundamental shifts in where power is generated, where AI data centers are built, and. Key Takeaways: Power for AI data centers is driving unprecedented infrastructure transformation, with facilities requiring 50-150 kilowatts per rack compared to traditional 10-15 kilowatts.



## AI Server Power Increment

---

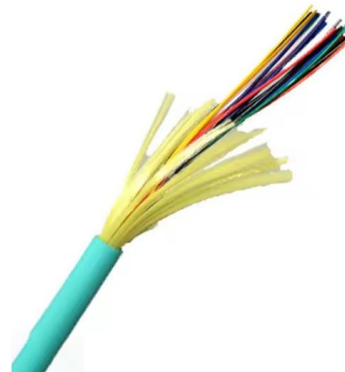


### A New Generation of GaN Devices to Meet AI Server Power Demands

Introduction: AI Challenge to Power Design The rapid development and deployment of massive artificial intelligence (AI) in the cloud - including OpenAI's ChatGPT, Microsoft's Bing with AI, plus Google's

### A New Generation of GaN Devices to Meet AI Server

Conclusion Fulfilling the power demands of massive AI workloads, complying with the established CRPS form factor, and meeting 80 PLUS Titanium



### How to Choose an AI Server Power Supply Unit (PSU)?

Explore the differences between general servers and FSP AI server power supply solutions. Learn how these advanced power solutions optimize

### AI's Energy Demand: Challenges and Solutions for a

A look at AI's rising energy demands, the infrastructure that powers it, and what steps are



necessary to align artificial intelligence with sustainability.

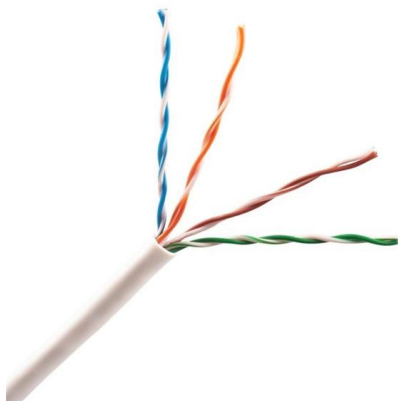


### **MOSFET Selection and Efficiency Measurement for AI Server Power**

Light-load efficiency is gaining importance in server equipment designed to meet 80 PLUS Titanium, due to the extra demand for efficiency to be above 90% at 10% load. Wide-Bandgap or Superjunction

### **Unlock the Power of PowerEdge Servers for AI**

Additionally, the profile's emphasis on energy efficiency is also beneficial for AI inference workloads. Even though AI inference tasks can be



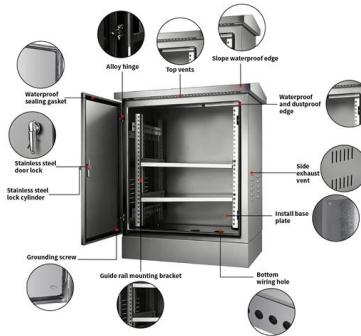
### **AI data center growth: Meeting the demand , McKinsey**

Demand for AI-ready capacity is the main driver of this potential deficit--as it must provide the high computational power and power density



## Comprehensive Analysis of Power Loading for Normal and AI Servers

AI servers necessitate upgraded power distribution systems to handle their higher power draws. Typically, this involves transitioning from standard 120/208V systems used for normal servers



## How to optimizing AI server power flow with 48V architectures and

Learn how data centers are shifting from traditional 12V power distribution architecture to more efficient 48V architectures and vertical power delivery.

## Deep, \$TSEM: SiPho Capacity Inflection Drives Multi-Fold Growth

The TDP (Thermal Design Power) of AI server racks, such as the Nvidia GB200 series, has jumped from 700W in the Hopper generation to over 1,200W, necessitating the adoption of liquid



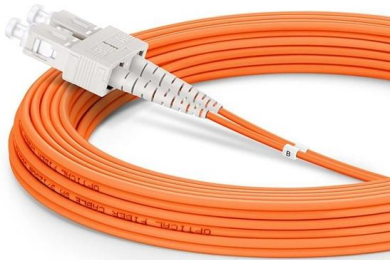
## Power Pulsating Buffer to meet peak power demands in AI server

The rise of artificial intelligence (AI) has resulted in a significant increase in power demand in data centers. AI server racks will rise to higher power levels reaching 1 MW.



## AI Server and Humanoid Robot, New Drivers for

Thus, their joint efforts and future fruit in the AI server power market are highly anticipated. Beyond AI data center server, humanoid robot industry



## Meeting the Demanding Energy Needs of AI Servers with Advanced

Explore how innovations in power devices, gate drivers, and DSP-based controllers tackle AI servers' high energy demands, optimizing efficiency in data centers.

## Power Pulsating Buffer to meet peak power demands in AI server

9 Abstract The rise of artificial intelligence (AI) has resulted in a significant increase in power demand in data centers. AI server racks will rise to higher power levels reaching 1 MW. Aside from the





## Crisis Ahead: Power Consumption In AI Data Centers

But between 2028 and 2030, given the current rate of growth, AI data center power demands will increase by 350 TWh, which is nearly three times as

## The biggest increment of the new generation of AI

In AI servers, the CPU needs power supply, the GPU board needs power supply, the memory (DDR4, DDR5, HBM) needs power supply, and



## Artificial Intelligence (AI) Servers - Intel

Explore key considerations for AI servers and how to design them to support AI workloads optimally.

## AI's Power Requirements Under Exponential Growth

To meet AI systems' growing demand for computational resources, AI data centers could need 68 gigawatts of power capacity by 2027--close to the





## Comparative Power Consumption of AI Servers and

This growth brings with it a significant increase in power consumption compared to traditional, general-purpose servers. Understanding the percentage



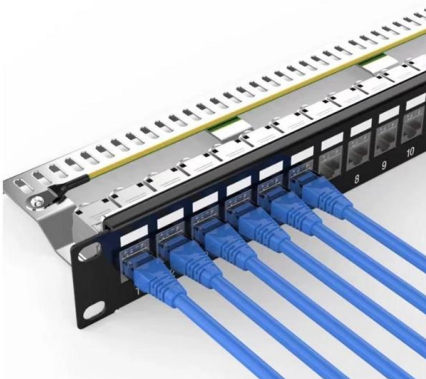
## Power requirements of AI servers , Data centre power guide

AI servers consume significantly more power than traditional IT equipment, primarily due to the use of GPUs and high-performance accelerators. Typical ranges include:  
Traditional servers: 300-800 W



## Comparative Power Consumption of AI Servers and

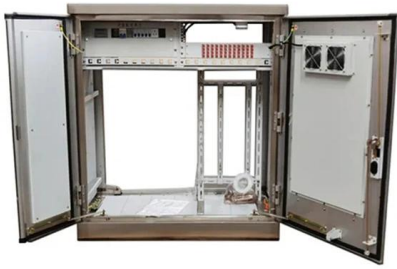
Conclusion The comparison between AI servers and normal servers in terms of power consumption reveals a substantial disparity, with AI servers



## AI is poised to drive 160% increase in data center power

Goldman Sachs Research estimates the overall increase in data center power consumption from AI to be on the order of 200 terawatt-hours per





## Growing Energy Demand of AI - Data Centers

AI is driving a surge in data center energy demand. Explore key data from 2024-2025 and forecasts for 2026, including infrastructure, costs, and

## Office 2016/2019 have reached end of support - here's

Migrating to the cloud with Exchange Online is the best and simplest way to retire your Exchange Server deployment, as well as benefit from new



## Addressing the protection challenges of 48V AI servers using hot

The emerging 48V AI servers demand significantly more power, both in peak and steady states, than traditional servers. The high-power consumption along with fast and transient dynamics impose

## The AI Boom Could Use a Shocking Amount of Electricity

What you're going to be using the AI technology for matters, too. The more complicated a request, and the longer the servers are working to fulfill it, the



## Meeting the Demanding Energy Needs of AI Servers

This blog post explores innovations in power devices, gate drivers and advanced controllers with Digital Signal Processing (DSP) capabilities to meet



## AI, Data Centers, and the U.S. Electric Grid: A Watershed Moment

At the same time, AI data center power consumption still lacks a standard electricity load profile. Such a baseline would help grid operators, planners, renewable energy developers, and



## What Are the Power Requirements for AI Data Centers?

According to RAND Corporation research, AI data centers could require 68 gigawatts of power capacity globally by 2027, close to California's





## Contact Us

---

For datasheets, pricing, or custom telecom energy solutions, please visit:  
<https://koskolong.co.za>