



Adam Tas Corridor Energy

ASM optical module equipment





Overview

ASMPT is one of the leading systems manufacturers producing precision optical module assembly machines. These machines are an essential component in production lines across a range of industries including the automotive, drones and medical. Epitaxy, often called Epi, is the process of depositing highly controlled silicon-based crystalline films, a critical process technology for creating advanced transistors and memory devices, and for wafer manufacturing. The following is a detailed description of the ASM camera module machine Basic functions and working principles The main functions of the ASM. SmarAct optical assembly solutions deliver cutting-edge technology for the alignment, positioning, and integration of optical components with nanometer accuracy.



ASM optical module equipment

Fast shipment in stock

Default white and black, contact customer service for notes

4U standard model



ASM digitalizes production of electronics manufacturing

ASM Pacific Technology is the world's largest supplier of semiconductor and LED manufacturing and assembly equipment. As the industry

ASM International

ASM International N.V. (with ASM standing for Advanced Semiconductor Materials) is a Dutch multinational corporation that designs, manufactures, sells, and services equipment used in the



Asmpt Semiconductor Equipment AA Optical Module Machine

The ASM camera module machine has the following key technical parameters and application scenarios in the production of camera modules: High-precision assembly: through active alignment technology

Products , ASMPT

The platform The LASER1205 platform is a family of systems specially developed for the separation and/or grooving of semiconductor wafers by



Home

AEi is the market leader of automation camera and sensor assembly and test equipment.



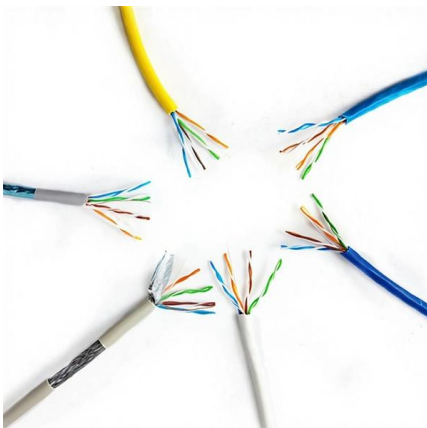
Home

That is the posi rot® PRAS20 from ASM. The angle sensor is suitable for applications such as operating tables, doors, opening valves, packaging or



Our technology & products

After patterns are created and etched, ASM deposition equipment, including ALD, epitaxy, LPCVD Vertical Furnace, and PECVD, is used to fill in the desired thin-film materials.





The Most Comprehensive Guide Of Optical Modules

Explore the ultimate guide to optical modules. Learn types, functions, performance metrics & how to choose the right module for your fiber network.



optical sorter

Description Reliability The Vision series is built for 24/7 continuous operation, with top-quality and durable components developed and produced exclusively for



Product overview Linear measurement

From one source: displacement, angle and inclination sensors With six innovative product lines, ASM offers a comprehensive product program including sensor solutions for displacement, angle, and



ASMPT

ASM Pacific Technology Is Ranked As The No. 1 Top Assembly Equipment Supplier In 2014 And Earns The Coveted "10 BEST FOCUSED SUPPLIERS OF CHIP



Asmpt Semiconductor Equipment AA Optical Module Machine

The main functions of the ASM camera module machine include assembling and testing various components in the camera module, such as lenses, image sensors, voice coil motors, filters, etc.



Switch SFP 100% Reliable Compatible Optical

Switch SFP now in Partnership with ASM Technologies for Channel Sales Here at Switch SFP we focus on developing close relationships with our end customers

Asmpt SMT Tester Supplier Semiconductor Active Alignment

The main functions of the ASM camera module machine include assembling and testing various components in the camera module, such as lenses, image sensors, voice coil motors, filters, etc.



Optical Assemblies

To achieve and maintain our high-quality standards, we use the ISO 9001 certified process and advanced in-house testing equipment to perform optical quality



ASMPT Active Alignment for CMOS Image Sensor

ASMPT provides you the most precise bonding experience by our innovative active alignment solution. It enables the best optical performance with the lowest cost of



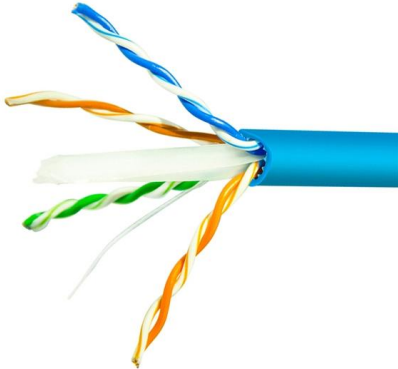
What is an Optical Module?

Explore the world of optical modules, essential components in optical fiber communication. Learn about the different types of optical modules, their

ALD (Atomic Layer Deposition) , ASM

ASM is the leading supplier of Atomic Layer Deposition, or ALD, equipment and process solutions for semiconductor manufacturing. ALD is the most advanced deposition method in the market, making it



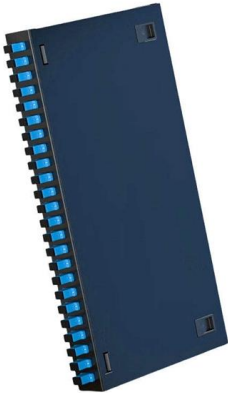


semiconductor equipment and parts-ASM , SemiStar

semiconductor equipment and parts-ASM
Description Please contact us for the availability of the following used semiconductor equipment and parts-ASM [PIs

EUV lithography systems - Products , ASML

Discover our NXE systems that use EUV light to deliver high-resolution lithography and make mass production of the world's most advanced



ASM Announces \$300 Million Expansion Of U.S. Operations In

SCOTTSDALE, AZ (December 5, 2023) - ASM International N.V. (Euronext Amsterdam: ASM), one of the fastest growing semiconductor equipment companies and global market leader in Atomic Layer

OPTICAL ASSEMBLY SOLUTIONS

For research facilities, System integrators (OEM), and industrial users looking for customized solutions, SmarAct provides a high-performance toolbox of modules that can be individually selected and



Our company

Our company ASM supplies wafer processing equipment to the leading semiconductor manufacturers, mostly for the deposition of thin films. We design,



DUV lithography systems , Products

ASML's deep ultraviolet (DUV) lithography systems dive deep into the UV spectrum to print the tiny features that form the basis of the microchip.

Integrated Aluminum Alloy
Die Casting



Durable and Secure Metal Screws



Precision Optical Assemblies

Advanced Manufacturing Optical assembly solutions for demanding applications in the semiconductor capital equipment, medical instrumentation, industrial,





Optical Module Assembly , Orbray Co., Ltd.

We have the capabilities and equipment in place to perform a Full Active Automatic Alignment System, YAG Welding System and a Full Automatic On-Line



PECVD

PECVD, or Plasma-Enhanced Chemical Vapor Deposition, is a specialized technology that utilizes plasma to enable deposition at lower temperatures. Read on.

Co-Packaged Optics -- a deep dive , APNIC Blog

The optical engine of a transceiver -- whether co-packaged or part of a pluggable module -- typically includes an electronic integrated circuit (EIC) and

GAIN AN IN - DEPTH UNDERSTANDING OF



- ① LED DISPLAY PANEL
- ② PROTECTOR OPERATION BUTTONS
- ③ NEUTRAL WIRE OUTPUT TERMINAL
- ④ LIVE WIRE OUTPUT TERMINAL
- ⑤ WORKING CURRENT AND VOLTAGE INSTRUCTIONS
- ⑥ FLAME - RETARDANT SHELL

Contact Us

For datasheets, pricing, or custom telecom energy solutions, please visit:
<https://koskolong.co.za>