



**Adam Tas Corridor Energy**

# **Access Layer Switch 24**





## Access Layer Switch 24

---

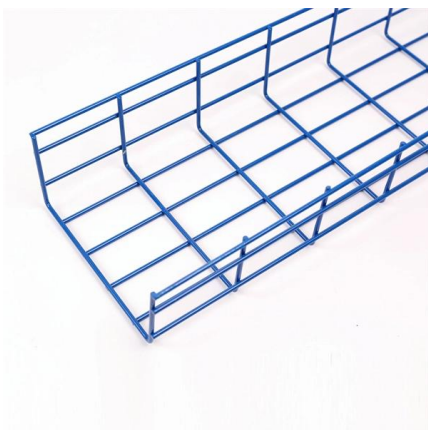


### **LANCOM GS-2426: LANCOM Systems GmbH**

With 24 Gigabit Ethernet ports and two additional combo ports (TP/SFP), this access switch enables flexible, future-proof network expansion - whether via fiber-optics

### **What is an access switch and how to select access switches?**

The high-performance Ruijie RG-S5310-E series access switches are designed for the access layer. They feature superb performance, flexibility in port design, advanced security features,



### **Access layer , FortiSwitch 7.6.0 , Fortinet Document Library**

Access-layer deployment recommendations  
Depicting what the access layer should look like is difficult because it depends on several physical and logical factors that make up the campus. These

### **24 Port 1G RJ45 POE+ L3 Access Switch Enterprise**

Powered by AsterNOS, our enterprise SONiC-based NOS, this switch supports a



comprehensive suite of Layer 2 and Layer 3 features including OSPF, BGP,



### **Choose access layer switch for the access layer network**

What is the main function of an access layer? What does an access layer switch do? How to choose the right network switch for the access layer? This post tells you everything.



### **XGS2210 Series , 24/48-port GbE Layer 3 Access**

Die XGS2210 Serie von Zyxel umfasst reichhaltige Layer-2 Funktionen, die den Traffic in ganz unterschiedlichen Implementierungen mit VoIP, Videokonferenzen,



### **Was ist ein Access Layer Switch? Vollständiger Leitfaden**

Erfahren Sie, was ein Access Layer Switch ist, wie er in Unternehmensnetzwerken funktioniert und wie Sie den richtigen Cisco Access Switch für Ihr KMU auswählen.





## Grandstream , 24-Port Gigabit Ethernet Layer 3 Managed PoE Switch

The Grandstream GWN7813P 24-Port Gigabit Ethernet Layer 3 Managed PoE Switch is a high-performance networking solution designed for enterprise-grade connectivity, advanced traffic

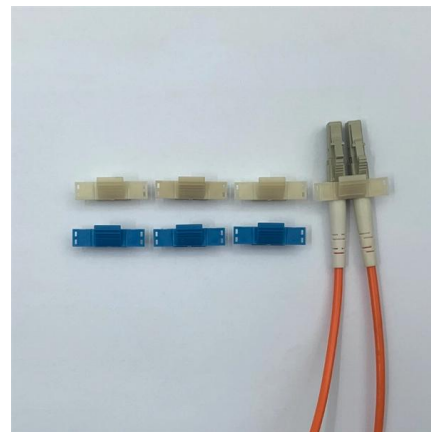


## Fixed Port L3 Managed Ethernet Switches

HPE Fixed Port L3 Managed Ethernet Switches deliver high-speed connectivity for edge, branch, and SMB deployments. Simplify IT with HPE Managed Ethernet

## 24/48 Port Gigabit Ethernet Access Layer 3 Switch

Equipped with the 24/ 48 GE ports, these series switches integrates advanced management and security functions to provide performance and scalability.



## Cisco Catalyst 1000 Series 24-Port and 48-Port Switch Hardware

The Cisco Catalyst 1000 Series switches are fixed-configuration, Gigabit Ethernet switches that provide entry-level enterprise-class Layer 2 access for branch offices, conventional



## What is the Access Switch?

What is the Access Switch? A typical enterprise hierarchical LAN campus network design includes an access layer, distribution layer, and the core layer. In each



## 16/24 Port Gigabit Ethernet Access Layer 3 Switch

Digisol DG-GS4600FSE Series 16/24 Port Gigabit Ethernet Access Layer 3 Switch is the next generation 10G stackable routing switch. Also provide high availability,

## Core Switch vs. Distribution Switch vs. Access Switch

The access layer consists of layer 3 switches, which take routed and switched data packets from the distribution switches and then route them to the access devices





### Mesh door/glass door optional



Sp-601 glass door

Sp-602 mesh door

## Access Layer Compact Switch Deployment Guide

rt for these additional access layer ports. The Cisco Catalyst Compact Switch family supports a common feature set with the networking platforms that are a ready a part of your Cisco SBA access layer.

## What is an access switch and how to select access switches?

What is an access switch? Learn the features and applications, and know how to select the right access switch for your network needs. Ruijie Networks' access switches here for you.

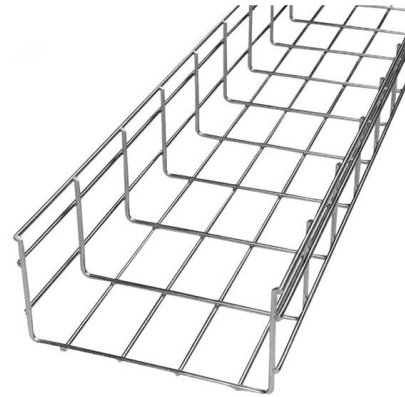


## FS Community

Hier sollte eine Beschreibung angezeigt werden, diese Seite lässt dies jedoch nicht zu.

## What Is an Access Layer Switch? Guide complet

Learn what an access layer switch is, how it works in enterprise networks, and how to choose the right Cisco access switch for your SMB.



## Data Center Access Layer Design

Overview of Access Layer Design Options Access layer switches are primarily deployed in Layer 2 mode in the data center. A Layer 2 access topology provides the following unique capabilities

## Understanding Access Switches: Key Components of

Explore the role of access switches in your LAN setup. Understand their key components, functions in the access layer, and how they integrate into



## Cisco Meraki MS125 switches provide Layer 2 access switching

Cisco Meraki MS125 switches provide Layer 2 access switching and 10G uplinks, ideal for branch and campus deployments. The MS125 series features a variety of power options designed to meet the



## **XGS2210 Series , 24/48-port GbE Layer 3 Access**

Zyxel XGS2210 Series has a rich Layer 2 feature set that can shape the traffic for diverse VoIP, video conference, IPTV and IP surveillance deployments and



## **24/48 Port Gigabit Ethernet Access Layer 3 Switch**

Digisol DG-GS4600SE Series 24/48 Port Gigabit Ethernet Access Layer 3 Switch offers green features like IEEE 802.3az (Energy Efficient Ethernet), Fan-less

## **LAN Switches**

LAN Switches Featuring user-friendly efficient IP management, IPv4 and IPv6 hardware Layer 3 routing, PLANET LAN switches are designed for SMBs, system integrators and large enterprises when



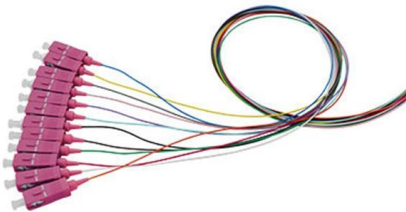
## **Data Link Layer in OSI Model**

Media Access Control (MAC): MAC sublayer manages the device's interaction, responsible for addressing frames, and also controls physical media



## How to Choose the Right Access Layer Switch?

Learn 8 key factors--ports, PoE, speed, security & TCO--to choose the right access layer switch and future-proof your network. Read the guide now.



## Plus Series: 24-Port PoE+ L3 Managed Switch , IO by HFCL

This 24-port PoE switch enables centralized access control, secure operations, and efficient network management, ensuring smooth performance for staff, customers, and critical systems.

## Meraki MS225-24

Discover the Meraki MS225-24 stackable access switch information. Learn about highlights and compatible accessories of this stackable access switch.





## **What Is an Access Switch? The Definitive Edge Network Guide**

Access switches are generally available in 24-port and 48-port models. Always build in at least 20% unused port capacity to accommodate future employees or new IoT devices without

## **Contact Us**

---

For datasheets, pricing, or custom telecom energy solutions, please visit:  
<https://koskolong.co.za>