



Adam Tas Corridor Energy

Access Switch Selection Principles





Overview

Pick an access layer switch that (1) offers enough ports for every wired and PoE device you'll add over the next three years, (2) delivers the speed—1 Gbps for general traffic or 10 Gbps for heavy data—to keep users productive, and (3) includes security and management features. Access switches are designed for cost-effectiveness and ease of use and provide the following features:

- High port diversity : Access switches offer a range of port types, such as 10/100/1000BASE-T ports, to accommodate the diverse access needs of various devices. This means the performance of the entire network relies on the data routed and switched by the core switch. Generally, multiple data switches are used at the core layer of a network so that a large amount of data can be routed to the layers in the hierarchy. This guide provides a comprehensive comparison of Access, Distribution, and Core switches, detailing their functions, characteristics, and deployment scenarios.



Access Switch Selection Principles



FS Community

Hier sollte eine Beschreibung angezeigt werden, diese Seite lässt dies jedoch nicht zu.

Core, Aggregation, or Access Switches? Choose the

Discover the crucial differences between core, aggregation, and access switches. Find out which type can best transform your network's



Network design principles , FortiSwitch 7.6.0 , Fortinet Document Library

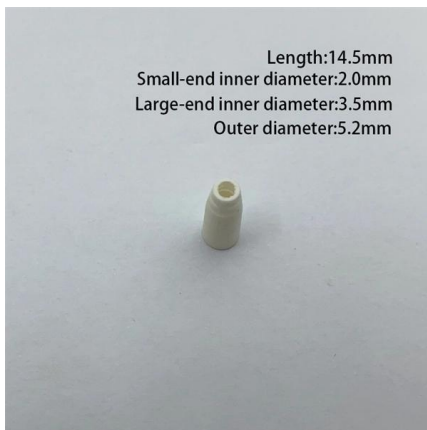
For access points that are dual attached to two different switches (see the figure in Tiered architecture), the network connectivity is kept. In a scenario where you lose one aggregation switch in the path,

SMB Network Design: Core vs. Distribution vs. Access Switches

Don't overspend on network hardware. Our expert guide explains core, distribution, and



access switches so you can design the right network for your SMB.



Core Switch vs. Distribution Switch vs. Access Switch

There are different types of enterprise switches that perform various roles in these layer-based or hierarchical ethernet networks. This white paper introduces the

Designing and Deploying Access Control Systems: Best

The situation is not unique, nor is it a scenario that is difficult to resolve. Security deployments must consider the protection of people, property



What Is Access Control? , Microsoft Security

Access control defined Access control is an essential element of security that determines who is allowed to access certain data, apps, and resources--and in



Understanding Access Switches: Key Components of

Explore the role of access switches in your LAN setup. Understand their key components, functions in the access layer, and how they integrate into



What is the Access Switch?

A typical enterprise hierarchical LAN campus network design includes an access layer, distribution layer, and the core layer. In each layer, the enterprise switches

What is access switch and how to choose the right one

What is access switch? This article will tell you about it and guide you through choosing the right one. It helps you make informed decisions for your network setup. What is Access Switch? You've probably



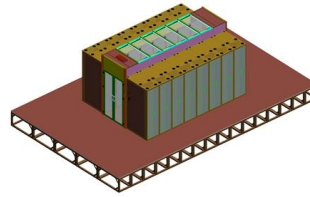
Solved: Selecting an Access Switch

If you need L3 switching in access layer, look at 3750 upwards if not don't. You may need to look into cost per port in detail, including if there is a cost for rack space.



Switch Access Scanning

Switch Access Switch Access controls the AAC device through scanning. Scanning typically requires that the possible selections are presented



How to Choose the Right Access Layer Switch?

By understanding your needs and comparing options, you can choose a switch that keeps your network running smoothly for years. Ready to find the

Software-Defined Access Solution Design Guide

About this guide Scope This guide serves as a foundational technical reference for designing Cisco ® Software-Defined Access (SD-Access), an intent



What is an access switch and how to select access switches?

What is an access switch? Learn the features and applications, and know how to select the right access switch for your network needs. Ruijie Networks' access switches here for you.



FS Access Switches Selection Guide for Your Networks

In today's interconnected world, choosing the right access switch is crucial for ensuring efficient network performance. This guide will help you understand what an access switch is, explore



Access vs. Distribution vs. Core Switch Comparison Guide

Access Layer Switches: Operating at the network's edge, access switches connect end-user devices like PCs, printers, IP phones, and wireless access points. They are characterized by high port density,

What Is an Access Switch? The Definitive Edge Network Guide

Learn what an access switch is, how it works at the network edge, why PoE and port density matter, and how Wi-Fi 7 and IoT change access-layer requirements.



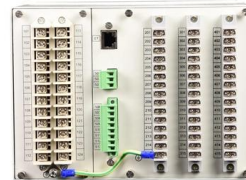


Access Switch Selection: How to Balance Brand Value and Cost

This article explores how to make informed decisions when purchasing access switches, analyzing brand considerations, cost-effective options, and how to evaluate return on investment (ROI).

Cisco Software-Defined Access Solution Design Guide

Scope This guide serves as a foundational technical reference for designing Cisco® Software-Defined Access (SD-Access), an intent-based networking architecture that delivers automated, secure, and

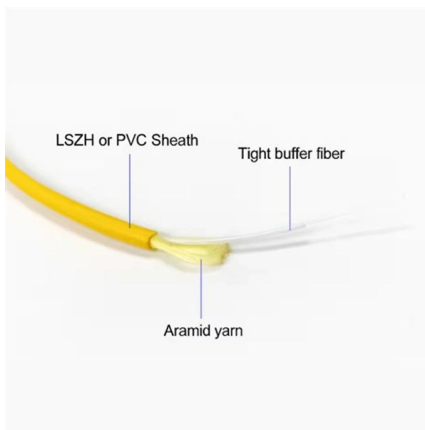


What Is an Access Layer Switch? Guide complet

Learn what an access layer switch is, how it works in enterprise networks, and how to choose the right Cisco access switch for your SMB.

How to Choose the Right Access Layer Switch?

Let's explore the key factors to consider when selecting an access layer switch. Whether setting up a small office or managing a large enterprise



Key Features of Access Switches Explained

The essential features of access switches, including high port density, PoE, Layer 3 capabilities, security, and QoS for efficient networks.

What is the Access Switch?

This article will introduce what the access switch is and how to select the right access layer switches for your enterprise network. In the meanwhile, some



Contact Us

For datasheets, pricing, or custom telecom energy solutions, please visit:
<https://koskolong.co.za>