



**Adam Tas Corridor Energy**

# **Adding access switches to the core**





## Adding access switches to the core

---



### Access vs. Distribution vs. Core Switch Comparison Guide

Compare Access, Distribution, and Core switches: understand their roles, features, and differences in enterprise network hierarchy. Make informed network design decisions.

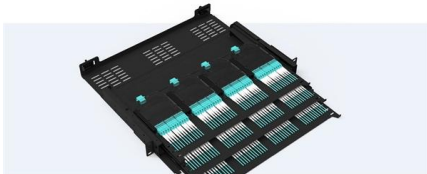
### Understanding the Core Switch: Key Differences and Uses

Explore the core switch's role as the backbone of your network. Discover key differences, uses, and insights into layer 3 core switch technology.



#### Pre-Terminated Patch Panel

- Standard 19" width
- Max 144 fibers in 1U
- Ultra-High Density Ready



Dual-side, easy install & maintain



Lightweight ABS MPO cassette



Premium sheet metal with matte coating

### Stay Informed with Our Newsletter

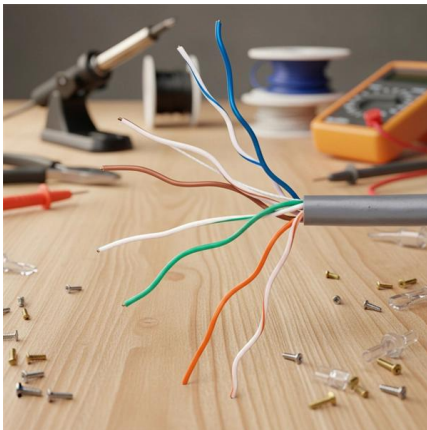
Call Now Stay Informed with Our Newsletter

### Configuring Aggregation and Access Switches to Be Managed by the

On the core switch, configure a management subnet for access switches, enable the DHCP



server function on the gateway interface of the subnet, and enable the function of automatically negotiating



### **Core Switch vs. Distribution Switch vs. Access Switch**

Comprehensive guide to Core, Distribution, and Access Switches. Roles in the network and important parameters explained.

### **Core Switch vs Access Switch**

What is the difference between access switch and core switch? The main difference is their role: an access switch connects end-user devices (like PCs) to the network, whereas a core



### **Gaming**

Find in-depth gaming news and hands-on reviews of the latest video games, video consoles, and accessories.



## Connecting Core to Access switches

You can order pre-terminated fiber cables to the specific lengths you want if you want to DIY the project without having to deal with fiber terminations. FS has good offerings in that



## Data Center Design: Basic 3 Layers, Core, Aggregation,

Data Center Basic Layered Design of Core, Aggregation, and Access The data center network design is based on a proven layered approach, which

## What's the difference between core switch and access

Understanding the differences between a core switch and an access switch can help to ensure efficient network operation.



## Two-Tier Server Access

Prepare switches for deployment in Aruba Central for building a Two-Tier Data Center. The L2 Two-Tier Data Center uses an MC-LAG core for



## Core Switch vs Access Switch , Definitions and Key Differences

The core switch is a high-end device that is used to connect all the access switches. It connects these access switches together and provides high performance for the entire network.



## Juniper Core and Access Switch best practice

We have Juniper 14x EX4200 as access switches, and 2x EX8208 with virtual chassis configured between the 2 EX8208. from the access switched EX4200 we need 2 links.. one for the core A and

## Access Switch vs. Core Switch

Understanding the differences and similarities between access switches and core switches is crucial for designing a network that is efficient, reliable, and secure.





## Core Switch & Access Switch Connections

Each access stack will have an ether channel link to each core switch providing a fast uplink between the stacks and some redundancy - if one access

## Core Switches: The Pillar of Network Infrastructure

Get a closer look at core switches: the nerve centers of network infrastructure that enhance performance and facilitate growth.



## Core Switch and Access Switch configuration

HI TEAM, I have a 2 3850 core switch which is on HA and 2960x for my access switch, i requiried help on 2 things. 1) How to enable LLDP-MED/CDP on 2960 switch 2) Voice VLAN should

## Best practices when configuring an Access switch stack to Core

Make sure the core switch is the root bridge, and enable portfast and BPDU guard on all access interfaces. Do your routing on the core switch, with an L3 transit to the firewall.



## Understanding Core Switch: What It Is and How to

The core switch plays a pivotal role in managing substantial network traffic, necessitating a forwarding rate that typically outpaces that of access and



## Understanding the Hierarchical Switch Layers: Access

The three-tier switch hierarchy -- Access, Distribution, and Core -- is not just a technical blueprint, but a strategic decision-making framework for IT



## Core Switch and Access Switch configuration

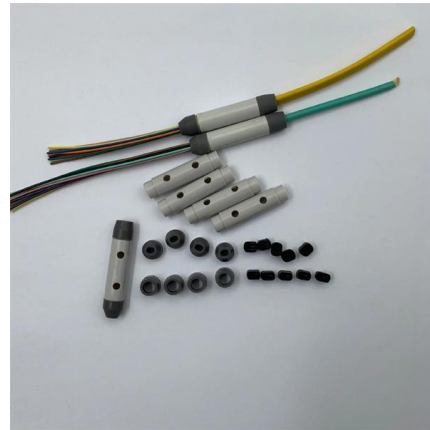
Solved: HI TEAM, I have a 2 3850 core switch which is on HA and 2960x for my access switch, i requirred help on 2 things. 1) How to enable LLDP-MED/CDP on 2960 switch 2) Voice VLAN





## Core Switch vs Access Switch , Definitions and Key Differences

This article focuses on the hierarchical internetworking and core switch vs access switch differences. We also discussed the core switches type and built a basic understanding of how a



## Accessing other switches from core switch

Everything is fine, clients get IP from DHCP on both switches. But I cannot access to second switch via management ip. I set ip routing, ip default

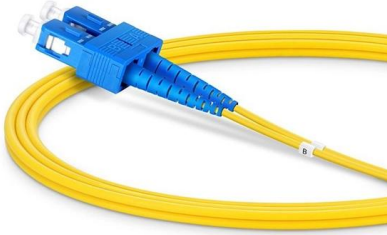
## Use Core Switch as an L2 Access Switch

The labels "core switch" and "access switch" which some vendors put on certain switch models are just suggestions for where in your network



## Core, Aggregation, or Access Switches? Choose the

Discover the crucial differences between core, aggregation, and access switches. Find out which type can best transform your network's



## Contact Us

---

For datasheets, pricing, or custom telecom energy solutions, please visit:  
<https://koskolong.co.za>