



Adam Tas Corridor Energy

Adding an account to the core switch





Adding an account to the core switch

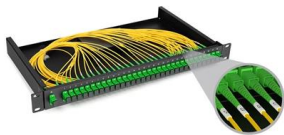


cs-178-project/imdb.vocab at main · apmalani/cs-178-project

Contribute to apmalani/cs-178-project development by creating an account on GitHub.

How to Create Users and Login in Cisco Router Or Switch

For creating a new user account on your Cisco Routerswitch we need to do the following steps.
1. Create a new account. 2. Configure the device.
Create a new user with the right privilege level.



How to add or change a Nintendo account on Nintendo

How to add additional Nintendo accounts to your Switch Before you can change the Nintendo account on your Nintendo Switch and add additional

Windows 11 local account setup -- 24H2, 25H2 and

Windows 11 steers new setups toward an online Microsoft account, but you can still create and



use a local account during installation. The exact



How to manage users from core switch ?

Is it possible in cisco switches to create users in core switch and push all users to other switches in the same network? As we manage Vlans through vtp server and client.

Cisco Nexus 5000 Series NX-OS System Management Configuration

This chapter contains the following sections:
Information About User Accounts and RBAC
Guidelines and Limitations for User Accounts
Configuring User Accounts
Configuring RBAC
Verifying



Aruba Central Initial Configuration

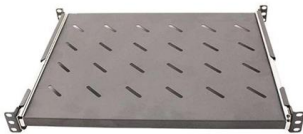
In this section, the core switch group is defined with initial configuration settings. Configuration defined at the group level is applied to all member





How to add devices in Aruba Central.

How to add devices in Aruba Central. ? Learn how to easily add and onboard devices in Aruba Central! This video walks you through the process of integrating Aruba APs, switches, and gateways



How to Add a New User Account on Nintendo Switch

Instructions on creating a new user account on the Nintendo Switch, and linking the new user account to a Nintendo Account during the set up process. Additio

Understanding Core Switch: What It Is and How to

In the realm of system networking, three key types of switches are frequently mentioned: access switches, aggregation switches, and core switches.



Core Switch vs. Distribution Switch vs. Access Switch

Core Switch vs. Distribution Switch vs. Access Switch: Understand Their Roles in Ethernet Networks Ethernet networks are growing and becoming more complex,



Best practices when configuring an Access switch stack to Core

Make sure the core switch is the root bridge, and enable portfast and BPDU guard on all access interfaces. Do your routing on the core switch, with an L3 transit to the firewall.



WORLD WIDE WEB JOURNAL Home

will open to start the export process. The process may take but once it finishes a file will be downloadable from your browser. You may continue to browse the DL while the export process is in

Working with GitHub in VS Code

Add the file types you want tracked with LFS to a .gitattributes file, then commit your changes directly to GitHub using the Source Control view. Switching branches





Understanding the Core Switch: Key Differences and Uses

Explore the core switch's role as the backbone of your network. Discover key differences, uses, and insights into layer 3 core switch technology.

How to Create USER on Nintendo Switch (Local or Online)

To create a new user account on your Nintendo Switch, follow these steps: Navigate to System Settings: On the home screen of your Nintendo Switch, select the g



Managing User Configuration, Cisco Catalyst PON Series Switches

A super user has all the permissions, including performing all switch configurations, adding new users, modifying users' passwords as well as their own, and deleting users.



Configure User Accounts to Enhance Security on a Cisco Smart or

This article aims to show how to configure the user accounts on the Cisco Managed switch.



Configuring User Accounts and RBAC

This chapter describes how to configure user accounts and role-based access control (RBAC) on Cisco NX-OS devices. You can create and manage users accounts and assign roles that limit access to



Windows 11 preview is now available on Azure Virtual

I think the Azure Windows 11 Preview VM is only for the upcoming Windows 11 final release (October 05) and not for next preview releases in the



Core Switch Explained: Key Functions and Benefits

Discover what a Core Switch is, its pivotal role in network architecture, and how it boosts performance and reliability in your data infrastructure.



user

The switch ships with the admin user account and three built-in local user groups: administrators, operators, and auditors. The admin account belongs to the administrators group.



Create multiple users on Cisco switches

Yes, I already set up ssh and telnet, I did some tests and it works, apart from RADIUS there is no other way for me to create the users and request a change of password to personalize it,

GameCube and Wii emulation on Switch just got easier with Tico

Tico is a native emulation frontend that eliminates the need for Android or Linux to play GameCube and Wii games on the Nintendo Switch.



ECS2100 Series CLI Reference Guide

The switch can be configured to accept management commands from Simple Network Management Protocol (SNMP) applications such as Edge-Core EView Pro. You can configure the switch to



Add Cisco Switch account manually , Sectona Docs

An account can be added for an onboarded CISCO Switch asset to control and regulate access to it using either of the following ways:
Using Asset Management: Login to the system and select PAM



Configure User Accounts to Enhance Security on a

This article aims to show how to configure the user accounts on the Sx250, Sx300, Sx350, SG350X, Sx500, and Sx550X series switches.

How to Add a New User Account on Nintendo Switch

Up to 8 user accounts can be created on Nintendo Switch. If the "Add User" option does not appear, there are already 8 user accounts on the system. You will need to delete an existing user before you





What is a Core Switch , Functions and Difference over Normal Switch

What is a core switch and how it works? This article builds the basics of this kind of switch for the ones who don't know anything about it. What is a Core Switch? It is a powerful

How to manage users from core switch ?

hi, Is it possible in cisco switches to create users in core switch and push all users to other switches in the same network? As we manage Vlans through vtp server and client.



Contact Us

For datasheets, pricing, or custom telecom energy solutions, please visit:
<https://koskolong.co.za>