



Adam Tas Corridor Energy

Adding an optical module to Huijue 2960x





Adding an optical module to Huijue 2960x



How to stack Catalyst 2960S and 2960X

Talks about how to stack Cisco Catalyst 2960S and 2960X. Cisco designed the 2960-X to be backwards compatible with the 2960-S to allow

Catalyst 2960-X and 2960-XR Switch Hardware

Install the FlexStack-Extended Fiber module and the fiber-optic cable. Install the FlexStack-Extended Hybrid module and the required fiber



Catalyst 2960-X Switch Hardware Installation Guide

Comprehensive guide for installing and setting up Cisco Catalyst 2960-X switches, covering hardware requirements, configurations, and troubleshooting tips.

Solved: 2960X Switch Stacking with fiber

Hi All, I am trying to stack 2960x "WS-C2960X-48LPD-L" switches in two different racks,



and racks are far away from each other. (lets say 4 Meters

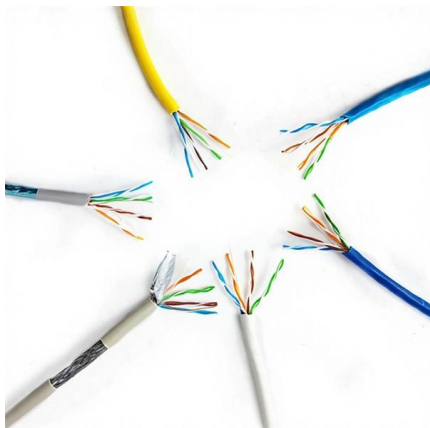


CISCO CATALYST 2960-X SERIES HARDWARE

Catalyst 2960-XR Switch Rear Panel 1 FlexStack-Plus module slot and 4 PS OK LED cover Page 17
The Cisco RPS 2300 (model PWR-RPS2300) supports the

Switch Installation & nbsp; [Cisco Catalyst 2960-X Series

Switches powered on after the 1-minute timeframe do not participate in the election.
Power off a switch before you add it to or remove it from an existing switch stack.



Cisco Catalyst 2960 Series Switches

Cisco Catalyst 2960 Series Switches - Some links below may open a new browser window to display the document you selected.



Catalyst 2960-X Switch Hardware Installation Guide

Install the FlexStack-Extended Hybrid module and the required fiber-optic/FlexStack cables. Note All the FlexStack modules are hot-swappable and can be inserted while the switch is powered on.



How to Configure Cisco 2960X SFP Modules?

Configuring Cisco 2960X SFP modules involves verifying compatibility, installing the modules correctly, and configuring the interface using the Cisco IOS command-line interface (CLI) to

Catalyst 2960-X Switch Hardware Installation Guide

The FlexStack-Extended Fiber module has two SFP+ module ports. The SFP+ port enables long-reach stacking using standard multimode LR (300m)



Catalyst 2960 Switch Hardware Installation Guide

Catalyst 2960 Switch Hardware Installation Guide - Troubleshooting [Cisco Catalyst 2960 Series Switches] - Cisco Systems



Catalyst 2960-X Switch Hardware Installation Guide

Install the FlexStack-Extended Hybrid module and the required fiber-optic/FlexStack cables. Note All the FlexStack modules are hot-swappable and can be inserted while the switch is powered on.



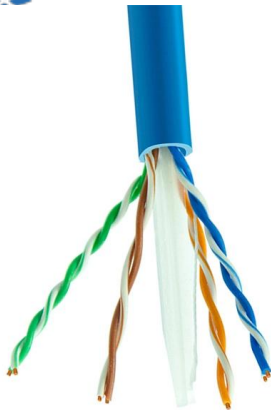
Adding 2960-X to existing 2960-S stack

I am not having luck adding a newer 2960-X to and existing 2960-S stack Only 3 switches here. Existing stack: WS-C2960S-48TS-L - Switch priority 14 (c2960s-universalk9-mz.152-2.E4.bin)

Switch Installation & nbsp; [Cisco Catalyst 2960-X Series

This encoding provides a way for Cisco to identify and validate that the module meets the requirements for the switch. For information about installing, removing,



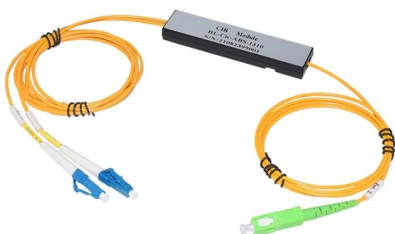


10gig SFP+ as an access port for 2960x

I have a need to have a 10gigbit access port on a 2960x 24ts-l running 15.2(6). With the proper SFP+, is it possible to configure a port this way?

Connector and Cable Specifications [Cisco Catalyst]

Each port must match the wave-length specifications on the other end of the cable, and the cable must not exceed the stipulated cable length. Copper 1000BASE-T



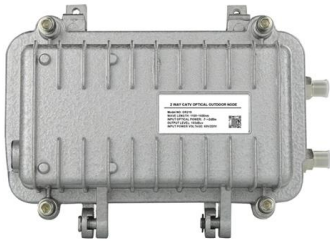
Troubleshooting & nbsp; [Cisco Catalyst 2960-X Series]

For fiber-optic cables, verify that you have the correct cable for the distance and port type. Make sure that the connected device ports both match and use the same

Catalyst 2960-X and 2960-XR Switch Hardware

For fiber-optic cables, verify that you have the correct cable for distance and port type. Ensure that the connected device ports match and use





Catalyst 2960-X Switch Hardware Installation Guide

Power off a switch before you add it to or remove it from an existing switch stack. For conditions that can cause a stack master reelection or to manually elect the stack master, see the

Catalyst 2960-X and 2960-XR Switch Hardware Installation Guide

Cisco Catalyst 2960-X and 2960-XR Switches now support QSFP-4X10G-AOC5M, the 40GQSFP to four 10G SFP+ direct attach breakout Active Optical cable assembly. Each port must



Catalyst 2960-X Switch Hardware Installation Guide

For fiber-optic cables, verify that you have the correct cable for distance and port type. Ensure that the connected device ports match and use

How to Configure Cisco 2960X SFP Modules?

Understanding SFP Modules and Cisco 2960X Switches Small Form-factor Pluggable (SFP) modules are hot-swappable input/output transceivers that plug into SFP ports, linking the



Cisco Catalyst 2960-X Series Switches

Cisco Catalyst 2960-X Series Switches - Some links below may open a new browser window to display the document you selected.



Catalyst 2960-X Switch Hardware Installation Guide

For cabling specifications, refer to the following notes: Cisco SFP and SFP+ Transceiver Module Installation Notes Cisco 40-Gigabit QSFP+ Transceiver Modules Installation Note Cisco



Catalyst 2960-X Switch Hardware Installation Guide

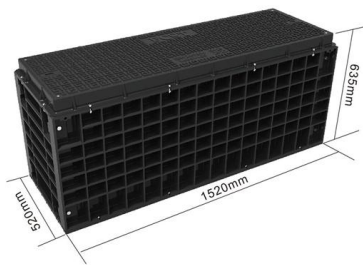
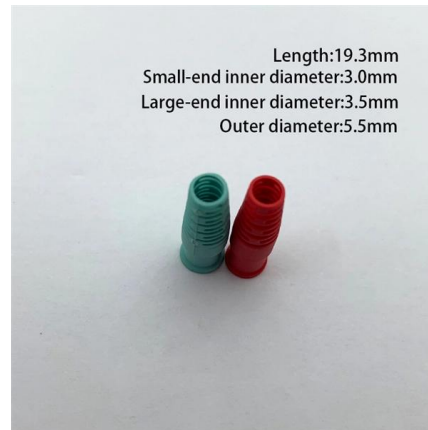
Install the FlexStack-Extended Fiber module and the fiber-optic cable. Install the FlexStack-Extended Hybrid module and the required fiber-optic/FlexStack cables.





Solved: 2960x stack

Hi, we have 2x 2960x 48 port switches configured as a stack. I now need to add another member. I know I simply disconnect one of the existing flexstack cables and then add the other



10gig SFP+ as an access port for 2960x

Solved: I have a need to have a 10gigbit access port on a 2960x 24ts-I running 15.2 (6). With the proper SFP+, is it possible to configure a port this way?

How to add a 2960x to a stack?

Below is a comprehensive guide to help you add a 2960-X switch to your existing stack effectively. Understanding the Stack Before adding a new switch, it's crucial



Catalyst 2960-X Switch Hardware Installation Guide

Cisco Catalyst 2960-X and 2960-XR Switches now support QSFP-4X10G-AOC5M, the 40GQSFP to four 10G SFP+ direct attach breakout Active Optical cable assembly. Each port must



**needed sfp fiber module
configuration in 2960 x series
switch**

The other end of the fiber connected with sfp
fiber modules to srw2024-k9-eu switch.



Contact Us

For datasheets, pricing, or custom telecom energy solutions, please visit:
<https://koskolong.co.za>