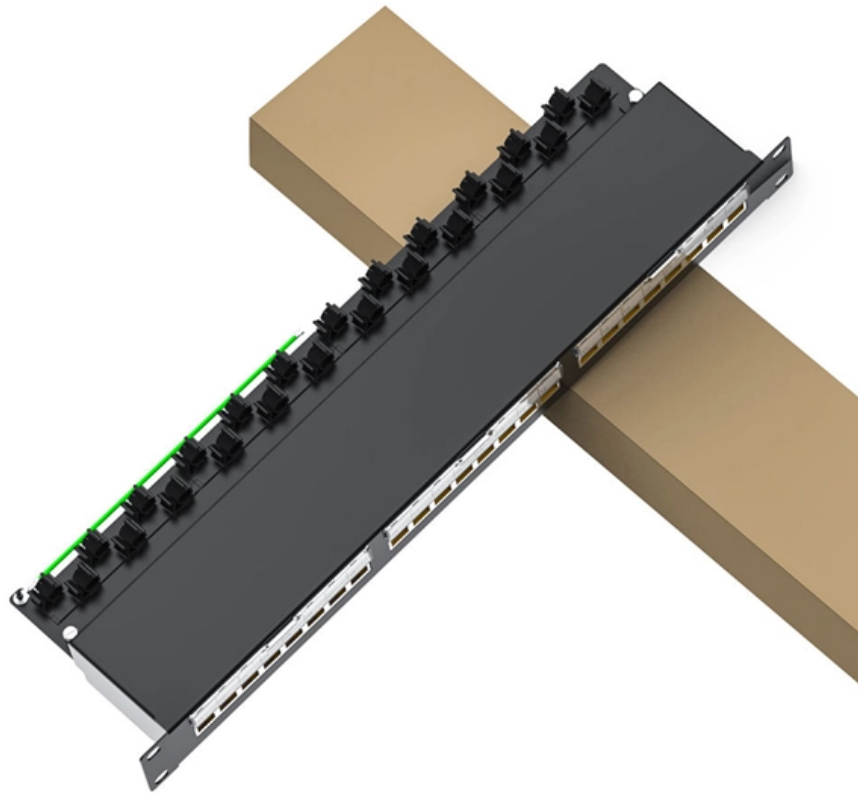




Adam Tas Corridor Energy

Aggregation or Core Switch



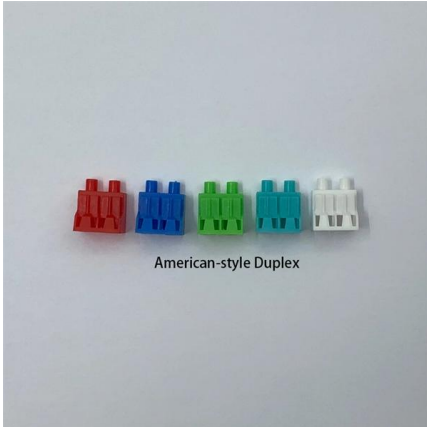


Overview

Link aggregation combines multiple physical ports into a single logical port, enhancing bandwidth and maintaining network stability. It's advisable to choose a core switch with link aggregation capabilities to ensure efficient transmission of traffic from the aggregation switch to. Knowing the roles of core, aggregation, and access switches in contemporary network topology becomes essential to create effective and scalable networks. Understanding Core Switch: What It Is and How to Choose the Right One for Your Network. Providing The Most Competitive Networking Products For Global Customers In the realm of system networking, three key types.



Aggregation or Core Switch



SMB Switch: Access Switch vs Aggregation Switch vs

The aggregation switch is used to aggregate the access switch. The core switch is used to aggregate the aggregation switch and is also responsible

Datacenter Core and Aggregation Design

Thus, it consolidates L2 traffic in a high-speed packet switching fabric and provides a platform for network-based services at the interface between L2



Core, Aggregation, or Access Switches? Choose the

Discover the crucial differences between core, aggregation, and access switches. Find out which type can best transform your network's

Difference between an access switch and aggregation switch?

Hi There, I would like to know what the difference is between the access switches and an

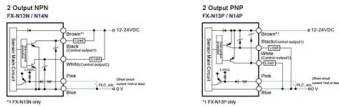


aggregation switch. We are looking at a environment where we are quoting on 2 x MS225-48LP



Core, Aggregation, or Access Switches? Choose the Perfect Fits

Discover the crucial differences between core, aggregation, and access switches. Find out which type can best transform your network's performance in 2025.



RG-CS86-20XS4VS2QXS-D 20-Port 10/2.5GE (SFP+), Layer 3 Ruijie Core

RG-CS86-20XS4VS2QXS-D 20-Port 10/2.5GE (SFP+), Layer 3 Ruijie Core/Aggregation Switch with Cloud Management, 4-Port 25/10GE (SFP28), 2-Port 40GE Suitable for small & medium enterprise



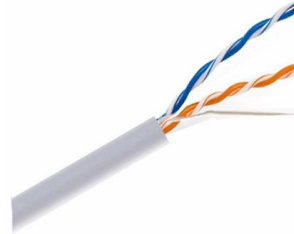
Access vs. Distribution vs. Core Switch Comparison Guide

This guide provides a comprehensive comparison of Access, Distribution, and Core switches, detailing their functions, characteristics, and deployment scenarios.



The relationship between access layer switches,

You may think that the access layer switch, the aggregation layer switch, and the core layer switch belong to the switch. Then, what kind of



10G uplink 24-port core routing switch-Aggregation/Core

L3 managed 10G uplink Ethernet core routing switch with 8*10/100/1000M RJ45 ports and 12*1/10G SFP+ fiber ports. Built-in 75W power supply and supports

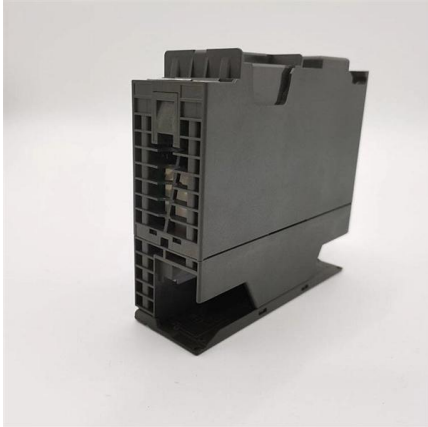
Thunder-link

Thunder-link - Huawei S6730-H series 10GE switches are next-generation enterprise-class core and aggregation switches that provide 10GE downlink optical ports and 100GE



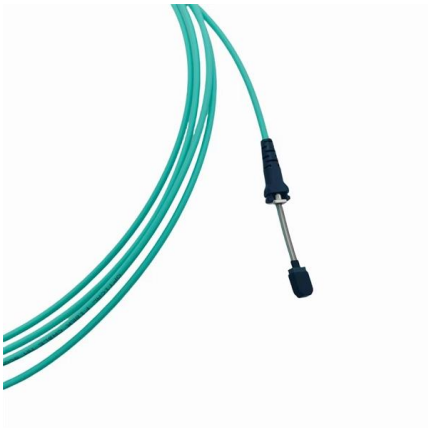
Campus Switches RG-S5760C-24GT8XS-X 24-Port GE Electrical

Layer 3 GE Core & Aggregation Switch
S5760C-24GT8XS-X Aggregation switch for small and medium-sized campus networks, with 8 x 1GE/10GE SFP+ uplink ports for high-speed data transmission; 24 x



What Is an Aggregation Switch and How to Choose?

An aggregation switch is a network device that consolidates traffic from multiple access switches, wireless access points, or other edge devices and



Multi-chassis link aggregation group

A multi-chassis link aggregation group (MLAG or MC-LAG) is a type of link aggregation group (LAG) with constituent ports that terminate on separate chassis, primarily for the purpose of providing

The Features and Differences Between Core Switches and Aggregation Switches

Core switch is the important part of the digital monitoring system, it is the connect bridge of aggregation switch, monitoring platform and storage server etc. It is suggested to choose L3 full gigabit core





H3C S7500X Enterprise Core Switch Series-H3C

H3C S7500X Enterprise Core Switch Series The H3C S7500X series switch is designed for the next-generation enterprise core networks. It adopts modular design, uses H3C's proprietary operating

Data Center Network Switch Design

Redundancy and High Availability: Deploy redundant core switches, use dynamic routing protocols (such as OSPF, BGP) and link aggregation (LACP) to enhance network reliability.



Aggregation Switch

An aggregation switch refers to a type of switch used to connect multiple ToR switches to a core switch/router in a cloud data center network. It enables high-bandwidth aggregation ports to be

What is a router? , Definition from TechTarget

Core routers. ISPs use core routers, the fastest and most powerful types of routers. Core routers provide maximum bandwidth for connecting



Understanding Core Switch: What It Is and How to

The core switch plays a pivotal role in managing substantial network traffic, necessitating a forwarding rate that typically outpaces that of access and

LoRawan outdoor base station

- * Industrial Internet gateway
- * Compatible with LoRaWAN network,
- * ClassA/B/C mode
- * Support 8/16 channel
- * Supports PoE power
- * supply and backup battery power supply
- * 10KV lightning protection



Everything You Need to Know About Aggregation Switch

What is an Aggregation Switch and How Does it Work? An aggregation switch consolidates data traffic from multiple network access



Understanding Core Switch: What It Is and How to

It's advisable to choose a core switch with link aggregation capabilities to ensure efficient transmission of traffic from the aggregation switch to the core



How are switches specified for access, aggregation, and

Access layer switches need high port density to connect end devices, while aggregation switches require fewer high-speed ports for uplinks. Core



Cisco Catalyst 9500 Series Core and Aggregation Switches

Cisco Catalyst 9500 Series switches, new and refurbished. 10G and 40G, StackWise-480, IOS XE. Free priority shipping, Lifetime Warranty, Advanced Replacement.

In-depth analysis: What is an aggregation switch?

In many network constructions, we have all heard of switches. So do you really understand switches? Why are aggregation switches often overlooked?



The Features and Differences Between Core Switches and

The biggest difference between core switch and aggregation switches is that, core switch is required to always be fast, highly available and fault tolerant since it connects all the aggregation switches.



SMB Network Design: Core vs. Distribution vs. Access Switches

Don't overspend on network hardware. Our expert guide explains core, distribution, and access switches so you can design the right network for your SMB.

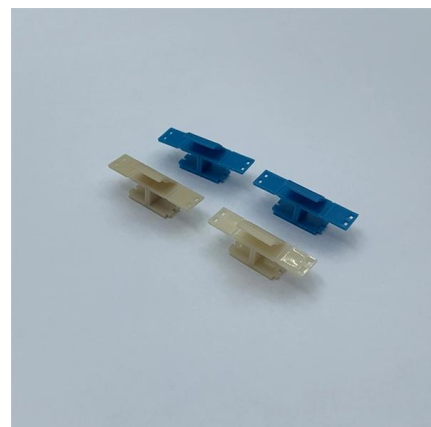


Switch (3) Features of access layer, aggregation layer and core layer

The core layer has the highest requirements for switch performance, and at the aggregation layer, the access layer has the lowest performance requirements; The core layer generally adopts high

What Is an Aggregation Switch and How to Choose?

Discover the role of aggregation switches. Explore differences between aggregation, access, and core switches, and choose the right model for your network.





Contact Us

For datasheets, pricing, or custom telecom energy solutions, please visit:
<https://koskolong.co.za>