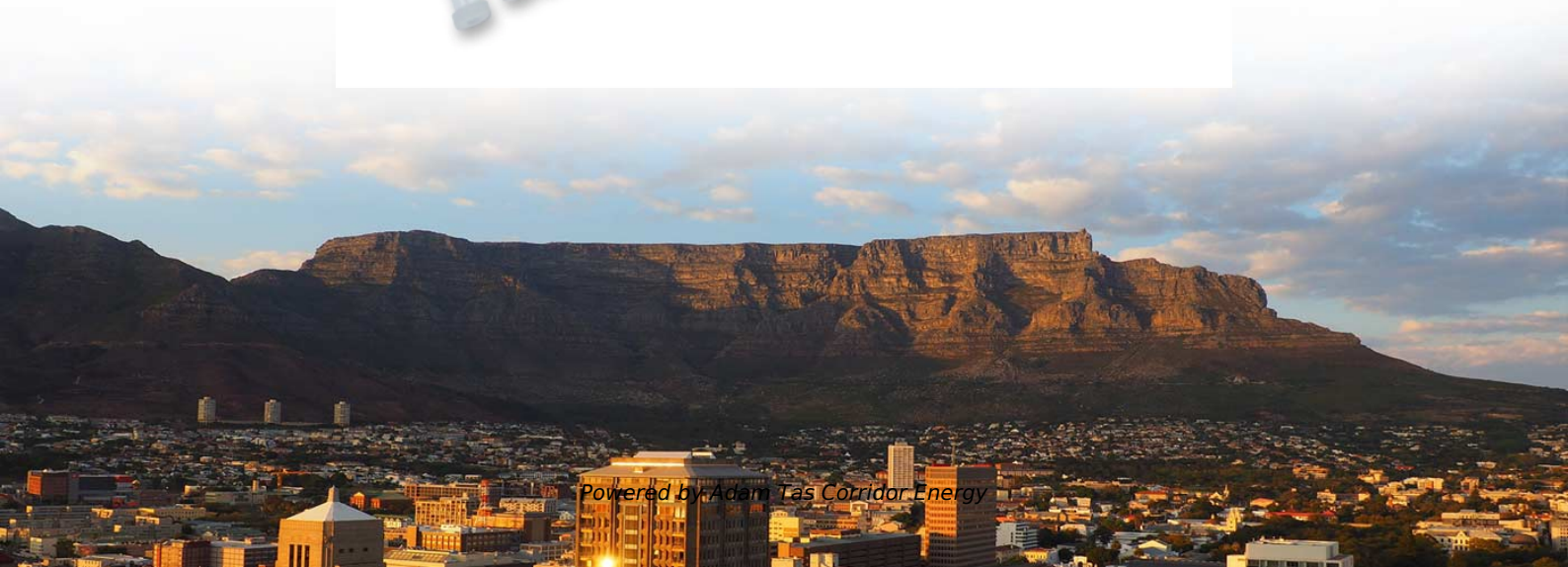
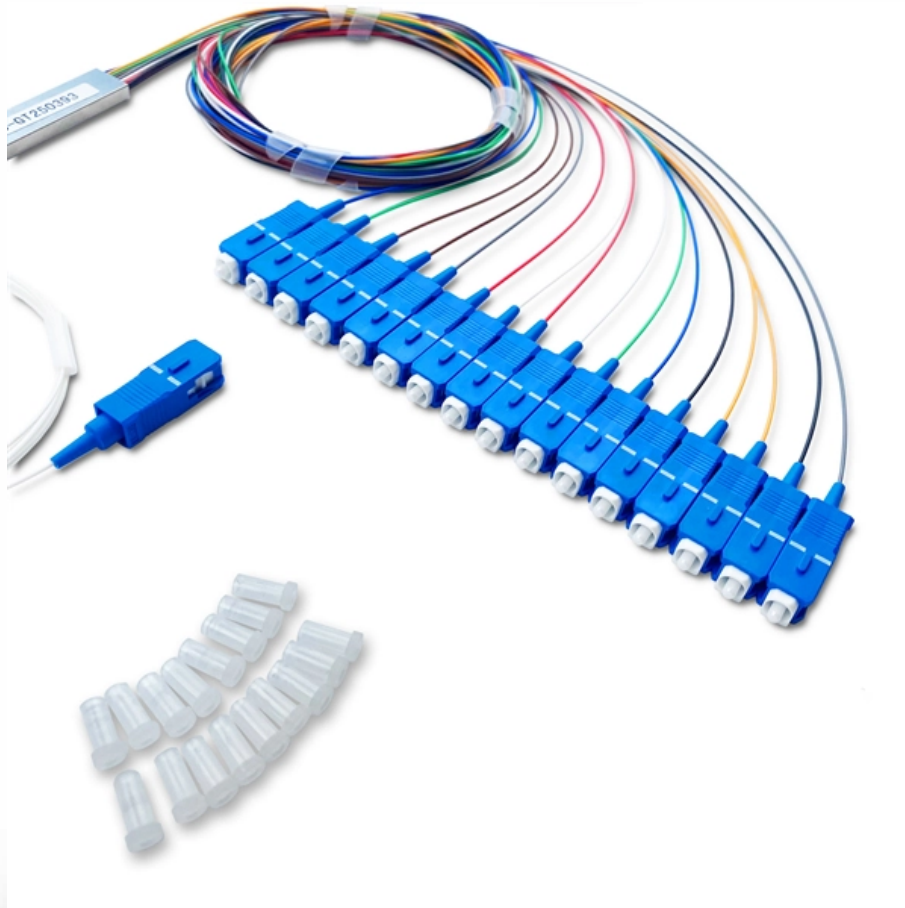




**Adam Tas Corridor Energy**

# **Aluminum core wire model and specifications for distribution boxes**





## Overview

---

Used as bare overhead transmission conductor and as primary and secondary distribution conductor and messenger support. Variable steel core stranding enables desired strength to be achieved without sacrificing ampacity. Aluminium conductors have traditionally been used in ground and medium-voltage applications, and only recently gained a foothold in industries such as automotive and aeroplane manufacturing. It is composed out of 1350-H19 aluminum wires surrounding an aluminum clad steel core.



## Aluminum core wire model and specifications for distribution boxes

---



### AL 600V-UD TRIPLEX

Southwire's triplex or paralleled 600 volt secondary UD cable meets or exceeds the following applicable ASTM specifications: B-230 Aluminum 1350-H19 Wire for Electrical Purposes.

### AAC AAAC ACSR Bare Aluminum Conductors

Compared with AAC and ACSR, AAAC conductor is mainly used as bare overhead transmission cables and as primary and secondary distribution



### ACSS

ACSS is used for overhead distribution and transmission lines. It is designed to operate continuously at elevated temperatures up to 250°C without loss of strength; it sags less than a comparable ACSR

### ASTM Standard ACSR/Aw Core Wire Aluminium

It is composed out of 1350-H19 aluminum wires surrounding an aluminum clad steel core.



ACSR/AW has as high breaking load as ACSR but better conductivity.



### **Krone Distribution Box Specifications , PDF , Cable**

Krone Distribution Box Specifications The document describes distribution boxes for connecting indoor and outdoor cables. It provides details on boxes that



### **UNDERGROUND DISTRIBUTION CABLE**

UNDERGROUND DISTRIBUTION CABLE - SINGLE CONDUCTOR - 1350 SERIES ALUMINUM - 600V SINGLE-RATED: XLPE INSULATED 90°C



### **DISTRIBUTION BOX**

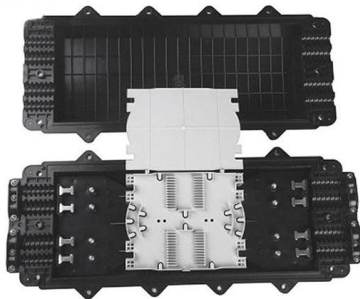
Technical Specification for Distribution Box (DB)- Accessory for LT AB Cables 1. SCOPE 1.1 This Distribution Box (DB) should be made up of Weather & Moisture Proof Outer box with Spring loaded



## 4/0,4/0,4/0 Aluminum URD Cable

4/0,4/0 & 4/0 Monmouth Triplex Aluminum URD Underground Distribution Cable. We ship our orders same day and cut to length with no extra charges.

### 可选配件



## ELECTRICAL AL 600V-UD

Find out more about Southwire's 600 Volt Secondary Distribution ELECTRICAL AL 600V-UD wire and cable products.

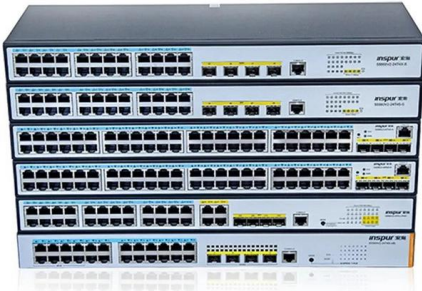
## Catalogue 2022

INTRODUCTION A junction box is an integral part of every electrical installation system. This metal enclosure, with partially cutout sections called conduit knockouts, is used to protect the connection of



## Distribution materials specification

SPECIFICATION FOR UNIT SUBSTATIONS UP TO 36 KV.



## heavy duty distribution frame Wire

Heavy Duty Distribution Frame Wire consists of 22 AWG tinned copper conductors with a heavy duty, abrasion resistant, flame retardant PVC insulation. HD-DFW is available in 2, 3 and 4 conductors,

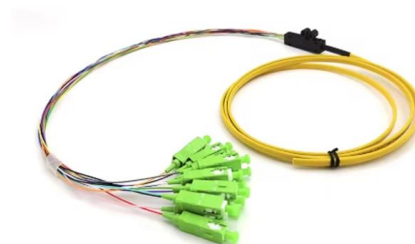


## 22 ALUMINUM WIRES APPLICATION Used for overhead

CONDUCTOR Solid or stranded hard drawn All Aluminum Conductor. Available sizes are listed on the next page.

## Distribution Box and Selection Guide

A distribution box, sometimes referred to as a panel board, distribution board, or breaker panel, is an essential part of electrical systems that





## ACSR/AW

Used as bare overhead transmission conductor and as primary and secondary distribution conductor and messenger support. ACSR offers optimal strength for line design. Variable steel core stranding

## Distribution Boxes

Description Distribution boxes are a great way to increase flexibility and cut costs. They lower your labor costs by reducing installation and troubleshooting time. They take up less space than loose wires,

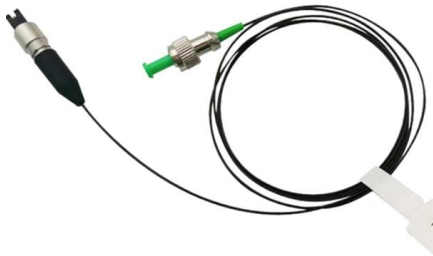


## Electric Utility Overhead Conductors Aluminum Tie Wire

Applications: Aluminum tie wire is a soft solid aluminum wire that is used in overhead transmission and distribution line construction to mechanically secure components such as conductors to pin

## UNDERGROUND DISTRIBUTION CABLE

ENGINEERING SPECIFICATIONS Standards  
Underwriters Laboratories® Standards UL-44,  
UL-854; ANSI/ICEA S-105-692; IEEE 835-1994;  
Compact Stranded Aluminum Alloy 8000



## UNDERGROUND DISTRIBUTION CABLE

ENGINEERING SPECIFICATIONS Standards Underwriters Laboratories® Standards UL-44, UL-854; ANSI/ICEA S-105-692; IEEE 835-1994; NFPA 70 (NEC®); Compact Stranded Aluminum Alloy 8000

## Electric Utility Overhead Conductors Aluminum Tie Wire

Complete Conductor: Aluminum tie wire is a solid annealed (soft) aluminum wire manufactured to ASTM B609 "O" tensile grade and wire diameter dimension.



## UNDERGROUND DISTRIBUTION CABLE

ENGINEERING SPECIFICATIONS Standards Underwriters Laboratories® Standards UL-44, UL-854; ANSI/ICEA S-105-692; IEEE 835-1994; Compact Stranded Aluminum Alloy 8000 Series per ASTM



## Utility Aluminum Wire & Cable

DWC's aluminum wire and cable are an attractive option for use in the utilities industry. Our utility-specific cable helps to provide a safe and reliable electrical transmission solution for utilities and their



## Aluminium Cables & Wires

Copper is often used in cables and wires because of its excellent conductivity and malleability. But it is relatively heavy and expensive compared to aluminium. Switching to aluminium, which is lighter and

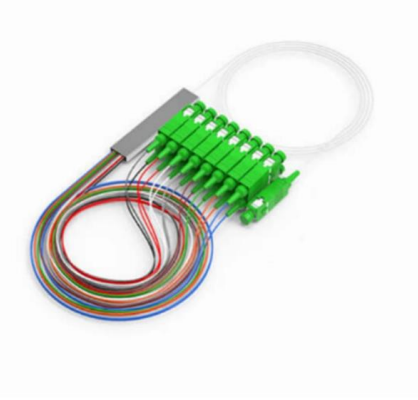
## Aluminum Tie Wire

Aluminum Tie Wire Generally used in overhead transmission and distribution line construction to secure components such as pin insulators to conductors or used for grounding applications. Standards &



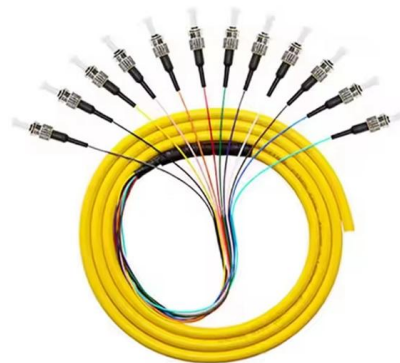
## Aluminum Building Wire

XHHW wire is used in residential high-rise, commercial, and industrial buildings & installations for the purpose of power distribution. We stock an array of colors in various sizes.



### Alpha Connect Distribution Boxes

Alpha Wire's Alpha Connect passive distribution boxes feature thermoplastic, die cast, or stainless steel housing options.



### ALUMINIUM Aluminium CABLES transmission.

Powerhard® RV Al/ U-1000 AR2V cable is suitable for all types of underground networks for public power distribution, as well as low voltage connexions in industrial plants, urban networks, buildings, etc.

### Solid Aluminum Tie-Wire

Nehring offers DSA "Utility Grade" Aluminum Tie Wire with greater elongation than standard soft drawn aluminum. Our "Utility Grade" Aluminum offers greater flexibility making it easier for lineman to tie





### **ABC distribution boxes and pole mounted cut outs**

Suitable for open wire overhead line distribution or underground supply systems, the terminals accept both concentric service cable and aluminium ABC conductors.

## **Contact Us**

---

For datasheets, pricing, or custom telecom energy solutions, please visit:  
<https://koskolong.co.za>