



Adam Tas Corridor Energy

Andorra ONT Optical Network Terminal SFP





Overview

5 Optical Network Terminal (ONT) with Small Form-factor Pluggable (SFP) packaging. The module integrates a bi-directional optical transceiver function and GPON MAC function. PON technologies, unlike Ethernet, are not P2P but one-to-many with two device types: ONU (Optical Network Unit)/ONT (Optical Network Terminal) and OLT (Optical Line Terminal). From residential to business to multi-dwelling units, our extensive portfolio of ONTs supports any deployment scenario with industry-leading voice, data and video capabilities. A plug and play solution means you simply plug it into your device, and no special configuration is needed. It is a cost-effective GPON customer premises system that provides broadband services with 1244 Mbps upstream and 2488 Mbps downstream by connecting to subscribers' switches or routers.



Andorra ONT Optical Network Terminal SFP

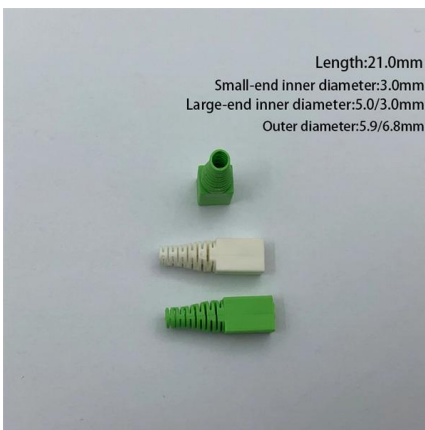


Optical line termination

An optical line termination (OLT), also called an optical line terminal, is a device which serves as the service provider endpoint of a passive optical network.

ONU vs. ONT in FTTx Networks: What's the Difference?

In FTTx, ONT is the same as ONU, a part of the passive optical network. But there are some technical differences in definition, deployment, and



MA5671A - SFP ONT (Optical Network Terminal)

The MA5671A can plug into the SFP slot of any existing or new customer- or carrier-owned terminals: switch, router. It delivers gigabit or more bandwidth over fiber cost effectively.

What is ONT? Everything You Need to Know

What is ONT? "ONT" stands for Optical Network Terminal. It is sometimes referred to as an "ONT



box," "fiber box," or CPE (Client Premises



GPON SFP Module Wiki: GPON ONT SFP, GPON ONU SFP

Modern OLT and ONT/ONU use compact fiber optic modules to achieve the triple-play GPON services. These modules are known as GPON SFP transceivers. This post will give a



GPON SFP

From the Central Office's (CO) Optical Line Terminal (OLT, with SFP GPON transceiver/module) a single strand of fiber goes out to a passive optical splitter



GPN-SFP

The GPN-SFP is a device that integrates the functions of a traditional Optical Network Terminal (ONT) or Optical Network Unit (ONU) into a compact Small



Nokia ONT G-010S-Q

The Nokia Optical Network Terminal (ONT) G-010S-Q is the answer for home networking delivered by Gigabit Passive Optical Network (GPON) Small Form-Factor Pluggable (SFP). The device is G.984.x



Understanding ONTs: How They Work and Their Benefits

Learn about Optical Network Terminals (ONT), their role in fiber optic networks, and the benefits they offer for high-speed internet, voice, and TV services.

What Is An ONT? - A Quick Guide

The Optical Network Terminal (ONT) is a cornerstone of contemporary fiber-optic communication networks. As the intermediary between



GPON ONT (Optical Network Terminal)

An Optical Network Terminal (ONT), sometimes referred to as an Optical Network Unit (ONU), is a device that is placed at the customer's premises and securely connects the incoming fibre supply to



MA5671A

MA5671A - SFP ONT (Optical Network Terminal)
Full function GPON ONT in SFP form factor for flexible and cost-effective fiber access. Huawei's MA5671A is one



What is OLT, ODN, ONU, and ONT in an FTTH Network?

Learn the roles of OLT, ODN, ONU, and ONT in an FTTH network. Understand how these components work together in PON architecture to deliver high-speed fiber-optic internet directly to

SFP with PON MAC and w/o PON MAC

Both devices can be manufactured using the SFP form factor 1. The OLT provides an integrated access box for Passive Optical Networks. OLTs are typically chassis





ABC of GPON SFP: Understanding GPON OLT / ONU / ONT SFP

On top of that, GPON SFP transceiver is an essential part of GPON system which is necessary both for optical network unit (ONU) installed at the subscriber's premises and for the

Everything You Need to Know About GPON SFP

Learn all about GPON SFP modules, from installation at central offices to customer premises. Upgrade your network with cost-effective and



What is an Optical Network Terminal (ONT)? Your

This is where the ONT comes in ? What is an Optical Network Terminal (ONT)? An Optical Network Terminal (ONT), also known as a fiber

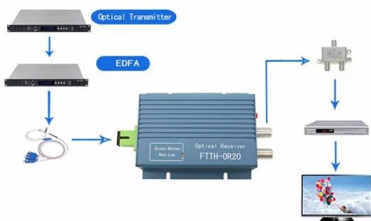
What is Optical Network Terminals (ONT)?

Explore Optical Network Terminals (ONT), their functions, and how they support efficient, high-speed connectivity in modern fiber networks.



Optical network terminals (ONTs)

An optical network terminal (ONT) is a device used to "convert" the signals from the fiber network into a technology that end-users can use to connect their devices, like laptops, tablets, smartphones,



Cisco 10G Routed PON ONT Data Sheet

These 10G optical network terminals for fiber-to-the-premises applications can be managed remotely and are interoperable with the Cisco Routed PON solution. Three models offer a



What is an optical network terminal (ONT)?

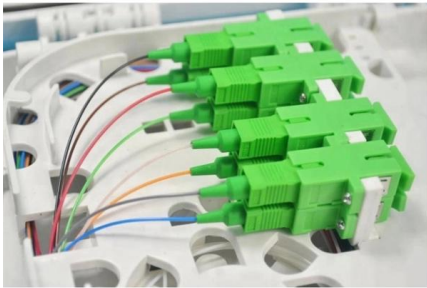
What is an optical network terminal (ONT)? An optical network terminal (ONT) is a device that serves as the endpoint of an optical network,





A Quick Guide to ONT (Optical Network Terminal)

Understand how an Optical Network Terminal (known as an ONT) functions, how it differs from Optical Line Terminal (OLT), and its Role in

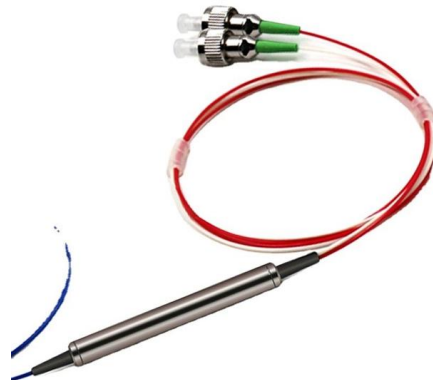


ONT SFP GPON: End-customer solution

The SFP format allows you to provide communication equipment with fiber interfaces in a modular way, so that in a common "chassis" you can insert or connect different types of fiber.

Data sheet SDX 600 Series

The Adtran SDX 600 Series of GPON optical network terminals (ONTs) are designed to address the demands of residential and business customers in the multigigabit era.



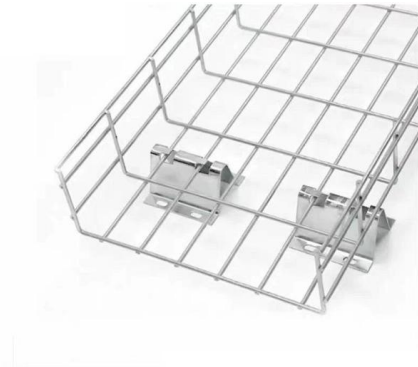
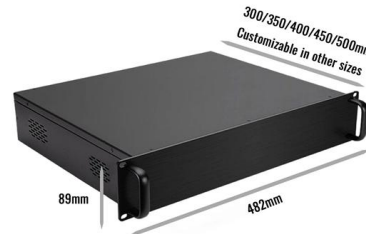
Understanding Optical Network Terminal (ONT)

1. Optical Interface Type The primary function of an ONT is to convert optical signals from the fiber optic network into electrical signals that can be used



GPON ONT module

This module is a G.984.5 Optical Network Terminal (ONT) with Small Form-factor Pluggable (SFP) packaging. The module integrates a bi-directional optical transceiver function and GPON MAC function.



Optical Network Terminal(ONT)& Optical Network Unit (ONU)

FS provides Optical Network Terminal(ONT)& Optical Network Unit (ONU)
XGSPON,GPON,EPON,XPON,XGPON (Free & Fast Delivery, Expert Tech Support, Outstanding

GPON SFP Transceivers in Detailed Introduction

GPON SFP is the optical module applied in OLT and ONT or ONU for passive optical networks. Read on to have a comprehensive picture of the GPON





Defining ONT: Optical Network Terminal

The Optical Network Terminal (ONT) is a device primarily used in fiber-optic communication systems. It acts as an interface between the fiber-optic network and the user's equipment, converting optical

SFP with PON MAC and w/o PON MAC

PON technologies, unlike Ethernet, are not P2P but one-to-many with two device types: ONU (Optical Network Unit)/ONT (Optical Network Terminal) and OLT



Optical network terminals (ONTs)

White paper An optical network terminal (ONT) is a device used to "convert" the signals from the fiber network into a technology that end-users can use to connect their devices, like laptops, tablets,

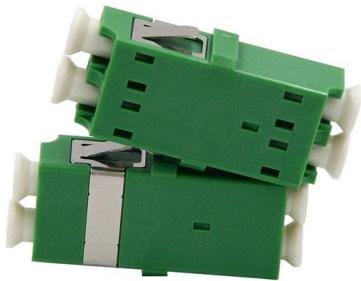
Optical network terminals

Our optical network terminals (ONTs) are designed to address the market with industry-leading voice, data and video capabilities. They make it easier for



Optical Network Terminals Selection Guide: Types,

Optical network terminals (ONTs) are essential endpoint devices in fiber-optic communication systems, responsible for converting optical signals from fiber



Data sheet SDX 631x

SDN-ready solution business services. Part of the Adtran ecosystem of open-API access products, they enable easy integration into existing network infrastructure and SDN-based management systems.



MA5671A - SFP ONT (Optical Network Terminal)

MA5671A - SFP ONT (Optical Network Terminal)
Full function GPON ONT in SFP form factor for flexible and cost-effective fiber access.





Contact Us

For datasheets, pricing, or custom telecom energy solutions, please visit:
<https://koskolong.co.za>