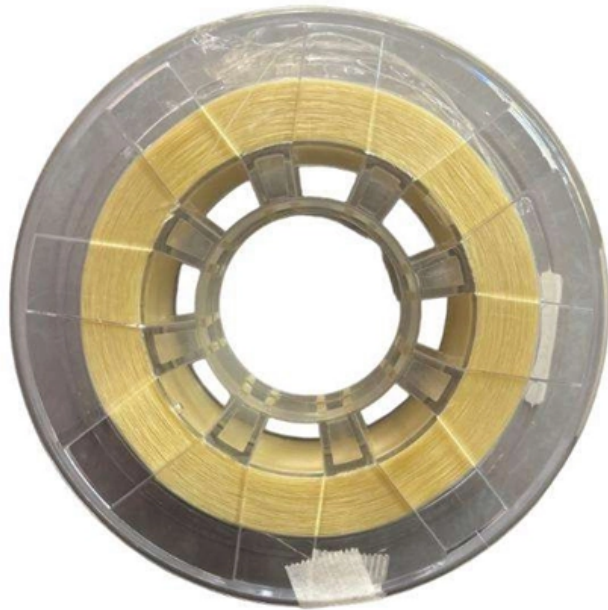




Adam Tas Corridor Energy

Are the optical modules connected at 10 Gigabit speeds





Overview

10G SFP+ Optical Module is a type of SFP+ transceiver that supports 10 Gigabit per second (10Gbps) data rates and is an enhanced version of the standard SFP (Small Form-factor Pluggable) transceiver. 10GBASE-LR is a 10-gigabit Ethernet optical standard that operates at 1310 nm over single-mode fiber (SMF), supporting link distances of up to 10 km. Typically used in higher-speed connections between switches and servers or as the primary interface. Short-reach multimode 1000BASE-SX parts are commonly used inside buildings — you'll see quoted reaches like a few hundred meters on.



Are the optical modules connected at 10 Gigabit speeds



QSFP Optical Module Planning for the Future: Key Trends 2026-2034

Explore the dynamic QSFP optical module market, forecast to reach \$14.7 billion by 2025 with a 4.5% CAGR. Discover key drivers, trends, and applications in high-speed networking and data

SFP+, XFP, QSFP+, DAC Twinax Cable 10Gtek Transceivers Co., Ltd

AOC (Active Optical Cable) 10Gtek's SFP+ Active Optical Cables are hot-swappable, low-voltage cable assemblies that connect directly into SFP+ modules at both ends.



Are 10G Optical Modules Compatible with Gigabit Optical Ports

When it comes to compatibility between optical networking equipment and optical modules, it is critical to ensure a proper match. In this installment, we will explore the compatibility

Optical Modules Market Size, Growth Trends & Forecast

Access detailed insights on the Optical Modules Market, forecasted to rise from USD 3.5 billion in



2024 to USD 8.2 billion by 2033, at a CAGR of 10.3%.



What is an SFP Optical Module? The Complete Guide to

SFP+ is the dominant standard for 10 Gigabit Ethernet (10GbE). It supports data rates up to 10 Gbps. The "plus" designation indicates a key



Unlocking the Potential of 10GE SFP+: What You Need

Discover the essentials of 10GE SFP+ transceivers for high-speed data connectivity. Learn about 10GBASE-T modules, optical options, and their



What is the difference between Gigabit and 10 Gigabit

Whether you should choose a Gigabit or 10GbE module depends on the type of network you are working with. For example, if your network is Gigabit



Optical Transceiver Speeds Guide: 1G, 10G, 25G, 40G,

One-gigabit SFP modules are the workhorses in access and campus networks. They're inexpensive, easy to terminate, and play nicely with legacy switches and



What is a 10G SFP+ Switch and How to Use It?

Devices (such as servers, routers and other network switches) are connected to the 10G SFP+ switch via SFP+ modules. Each SFP+ module converts electrical signals to optical signals to



Multimode SFP+: 10GBASE-SR Specs, Fiber Types and

10GBASE-SR SFP+ modules have become the most common optical solution for short-reach 10GbE connections, particularly in data centers,





Haile SFP-GE40-SM1310-A 1.25G Gigabit Single Fiber Optical Module

Shop Haile SFP-GE40-SM1310-A Gigabit optical module with 1.25Gbps speed, 1310/1550nm wavelengths, and single-mode single-fiber support. Ideal for long-distance SFP networking.

Differences Between Optical Modules SFP, SFP+, CFP, XFP, QSFP

In addition, SFP+ direct connect cables (i.e., SFP+ DAC high-speed cable and AOC active fiber optic cables) connect two SFP+ ports without the need for additional optical modules and cables

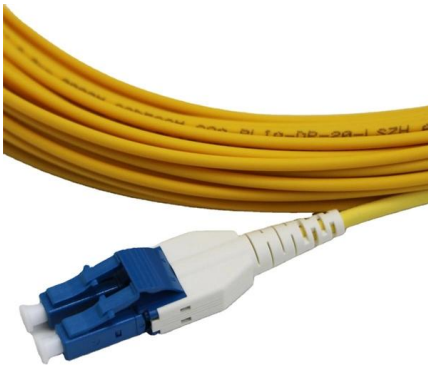


Comprehensive Guide for Optimal 10G SFP+ Module

Discover the pivotal role of 10G SFP+ modules in high-speed networks. Our detailed guide covers their features, types, and how to choose the

The Ultimate Guide to SFP Modules (2026): Types,

Confused by SFP vs SFP+? Read the definitive 2026 guide on SFP modules. We explain Single Mode vs Multimode, DDM diagnostics, and how to choose the right

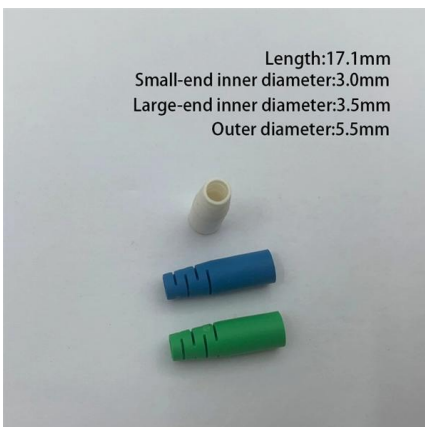


10 Gigabit Ethernet (10GbE) Standards: The Definitive

You can connect to 10 Gigabit Ethernet switches with a single fiber optic cable, which is much cheaper than running multiple cables. Using 10GbE,

SFP+ Optical Transceiver Modules (10G-SR/LR)

Code: SF-10GSFPPLCL-000 Genuine Amphenol 10GBASE-SR SFP+ Optical Transceiver Modules provide a high-density, high-performance interface for 10



10G SFP+ Transceiver Guide: Types, Compatibility,

Your complete guide to 10G SFP+ modules. Understand the differences between SR, LR, ER & ZR types, check compatibility with Cisco, Dell,



Understanding SFP to SFP+ Compatibility: A

Most SFP and SFP+ transceivers operate at their rated speed as they are manufactured. Thus, a 10Gb SFP+ optic on a 10Gb switch cannot auto



AI Data Center Optical Transceiver Module Market 2025-2030

AI Data Center Optical Transceiver Module Market 2025-2030 Posted on Apr-03-2026 The AI data center optical transceiver market has entered a historic growth phase, driven by the exponential

Optic Modules Datasheet

4 Optic Modules Data Sheet SFP (form factor) = small form-factor pluggable transceiver SMF (media) = single-mode fiber-optic MMF (media) = multimode fiber-optic XFP (form factor) = 10-gigabit small



Introduction of 10G SFP+ Optical Modules

10G SFP+ Optical Module is a type of SFP+ transceiver that supports 10 Gigabit per second (10Gbps) data rates and is an enhanced version of the



Cisco Optics , Transform Your Network

Get the highest quality, performance-leading optical transceivers for any network architecture. Find the transceiver model to fit your network.



800G Client Optics in the Data Center

When hyperscale data center operators start deploying a new generation of client optics, they immediately require massive volumes of optical modules to build out switching fabric and router

SFP vs SFP+: The OEM Guide to 1G and 10G Optical

Most enterprise switches (Cisco, Aruba, Juniper) allow 10G SFP+ ports to accept 1G SFP modules. However, you may need to manually set the port





Optical Fiber and 10 Gigabit Ethernet



Introduction As 10 Gigabit Ethernet (10GbE) is introduced into networks the physical limitations and properties of optical fiber introduce new challenges for a network designer. Due to the increased data

Contact Us

For datasheets, pricing, or custom telecom energy solutions, please visit:
<https://koskolong.co.za>