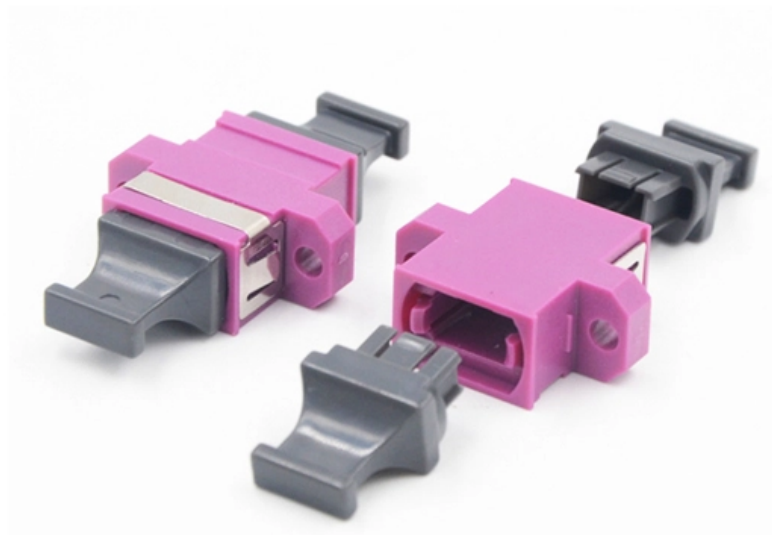




**Adam Tas Corridor Energy**

# **Are there any requirements for secondary distribution boxes**





## Overview

---

Most modern secondary networks are operated at AC rated voltage of 100-120 or 230-240 volts, at the frequency of 50 or 60 hertz. Operating voltage, required number of phases (three-phase or single-phase) and required reliability dictate topology and configuration of the network. Secondary selective service achieves similar results by using switches on secondary voltages rather than primary voltages. This document represents the minimum requirements and specifications for the installation of the electrical underground distribution systems fed from padmounted transformation, serving Secondary Service Accounts, to be transferred to Oncor Electric Delivery Company ownership. The secondary box adopts an inner and outer door design, with a spray painted exterior. A distribution box, also known as a fuse box or power distribution box, is the heart of the domestic electrical installation. It is used to distribute the electricity supplied by the energy supplier to the various circuits within a building.



## Are there any requirements for secondary distribution boxes

---



### What are the primary, secondary and tertiary distribution boxes?

The secondary box adopts the design of inner and outer doors, the appearance is plastic sprayed, safe and beautiful, and the rainproof box top is suitable for field work.

### The difference between the first, second, and third levels of

What do the primary, secondary, and tertiary boxes of a distribution box mean? This is a relative issue. Let's make a hypothesis: a newly built residential area introduces a 10kV incoming line



### Requirements And Specifications For Installation Of

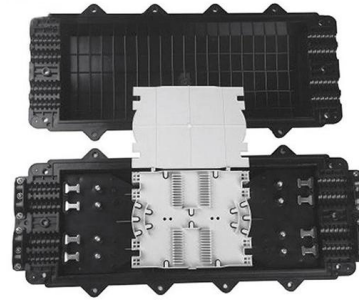
The installation requirements and specifications of Distribution box involve many aspects, including site selection, fixing method, wiring specifications

### Design requirements and standards for low voltage

Regularly inspect and maintain your distribution box to catch issues early and ensure safe



operation. Design requirements for low voltage distribution



### **Distribution Box: Types and Functions , Axis-Electricals**

A distribution box ensures that electrical supply is distributed in the building, also known as a distribution board, panel board, breaker panel, or electric panel. It is

### **Understanding Distribution Boxes: A Comprehensive Guide**

A distribution box, also known as a power distribution box or electrical distribution box, is used to distribute electrical power safely to multiple



### **The installation requirements for the distribution box**

Learn how to install a distribution box safely and correctly. Covers wiring, placement, standards, and expert tips for a compliant setup.



## Specifications for Electrical Underground Distribution Systems for Pad

This document represents the minimum requirements and specifications for the installation of the electrical underground distribution systems fed from padmounted transformation, serving Secondary



### The difference between the first, second, and third levels of

The requirements for the distribution box can be based on the power consumption plan of the project, and if not, you can go to a sample construction site to see (such as large projects, which

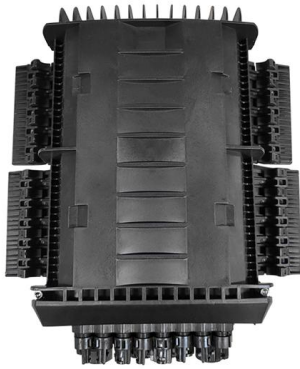
## A Definitive Guide To Distribution Boxes

Power distribution boxes are beneficial because they eliminate the requirement for each output device to be connected directly to the power source. As a result, there's no reason to utilize



### Three-Tier Power Distribution System in a Newly Constructed

Learn about the three-tier power distribution system (main secondary tertiary distribution boards) in a new residential area including their roles connections and safety measures for 0.4kV power supply.



## Cautions and Requirements for Installation of

When the distribution box is installed and constructed, some safety operation items have become the primary premise of the work. Therefore, there are certain



## Distribution box

The installation, expansion or modernization of a distribution box is subject to clear legal regulations in Germany. The regulations of the VDE (Verband der Elektrotechnik Elektronik Informationstechnik e.

## Secondary Distribution Box

The SDB can be fitted with terminal blocks for custom wiring. The Secondary Distribution Box (SDB) is provided in powder coated black finish.





## Secondary Distribution Substations; Common Clauses

16.3 A generic flooding assessment for secondary distribution substations can be undertaken using TG-NET-SST-016. The calculator will state if a specific flood risk assessment is required.

## Understanding Distribution Boxes: Your Guide to Power

Weatherproof Distribution Boxes These serve specific outdoor purposes, with rain, dust, and extreme temperatures sealed shut, protecting any



## Distribution Boxes Explained: Types, Functions, and

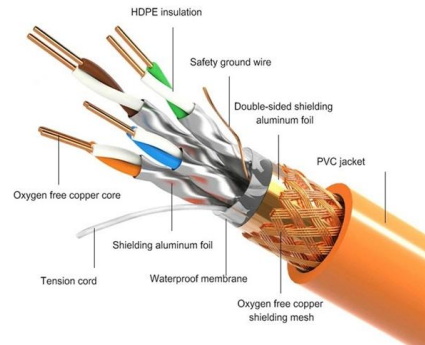
Learn about distribution boxes, their types, functions, and safety features to ensure efficient and secure electrical power distribution in any building.

## Detailed explanation of the installation specifications and standards

This article will focus on the definition, applicable environment, installation specifications and standards, and precautions of "secondary explosion-proof distribution box", and comprehensively analyze its

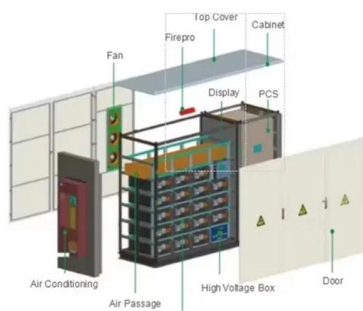


PRODUCT DETAILS



### Distribution Box Guide: Types, Components & Solutions

Understand distribution boxes (DB boxes) in 5 minutes. Learn about types, components, functions, and uses. Find the perfect DB box for your needs.



### Comprehensive Guide on Septic Tank Distribution Box Functionality

Explore the comprehensive guide on septic tank distribution boxes, covering their importance, types, installation, and maintenance.



### Understanding Distribution Boxes: A Comprehensive Guide

These boxes come in a variety of sizes and shapes depending on how complex a system is and the electric requirements of the building. A variety





## What Is an Electrical Distribution Box? A Complete Guide

An electrical distribution box routes power, prevents overloads, and keeps wiring organised--essential for safe, efficient home and



## Power Distribution Boxes Explained Simply

Discover the essentials of a Power Distribution Box--how it works, key types, benefits, and tips to ensure safe, efficient electrical power management.

## Contact Us

---

For datasheets, pricing, or custom telecom energy solutions, please visit:  
<https://koskolong.co.za>