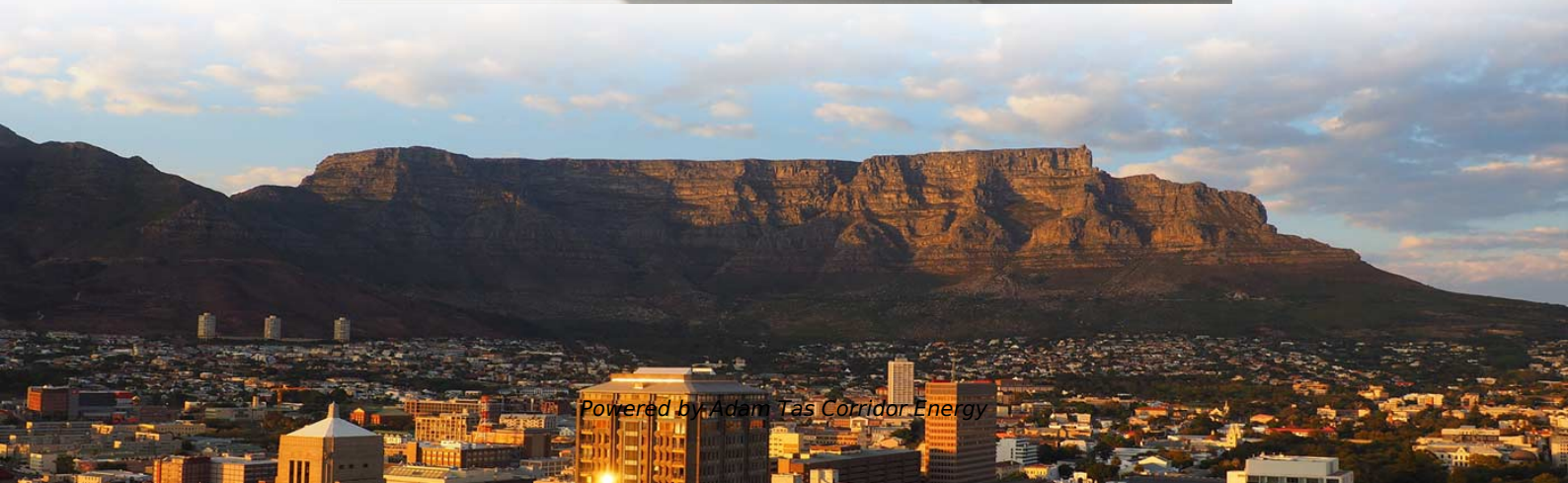




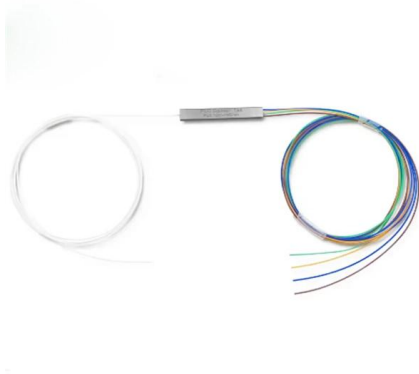
Adam Tas Corridor Energy

Argentina Customs Declaration Erbium-Doped Fiber Amplifier SFP





Argentina Customs Declaration Erbium-Doped Fiber Amplifier SFP

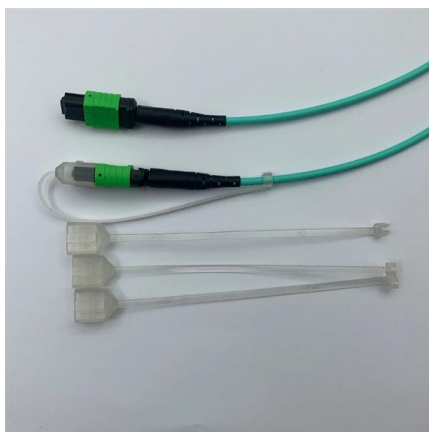


Compact and flat-gain fiber optical amplifier with Hafnia-Bismuth

For the first time, we demonstrated a compact Erbium-doped fiber amplifier (EDFA) using a newly developed Hafnia Bismuth Erbium co-doped fiber (HBEDF) as a gain medium. The HBEDF

Customs Ruling NY h86252

The optical amplifiers are used in wideband optical transmission systems. Optical amplifiers replace regenerators. The optical amplifiers use an erbium-doped fiber amplifier (EDFA) and incorporate

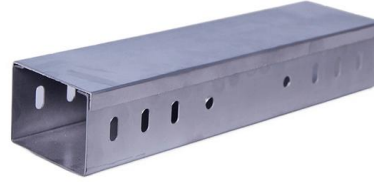


Erbium Doped Fiber Amplifier Spec Sheet

Overview PPC's Erbium Doped Fiber Amplifier (EDFA) is an optical amplifier that is used to boost optical signals carried through a fiber optic communication system. The power of a data transmitter may be

Erbium-Doped Fiber Amplifiers: Ultimate Guide

Discover the principles, applications, and benefits of Erbium-Doped Fiber Amplifiers in

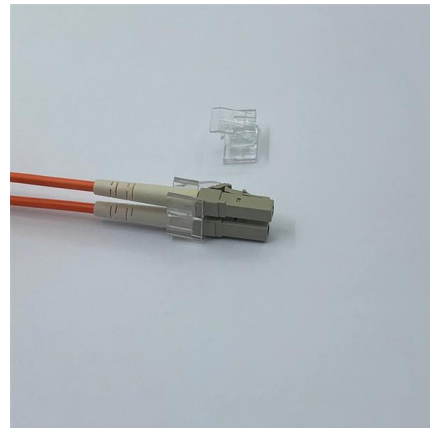


Erbium-Doped Fiber

An erbium-doped fiber amplifier is one of the most popular optical devices in modern optical communication systems as well as in fiber-optic instrumentation. EDFAs provide many advantages

EDFA (Erbium Doped Fiber Amplifier) - Physics and

EDFA (Erbium-Doped Fiber Amplifier) is an optical device used to compensate optical signal attenuation caused by fibers and components, to increase optical



Optical Fiber Amplifier Imports Under HS Code 85437099

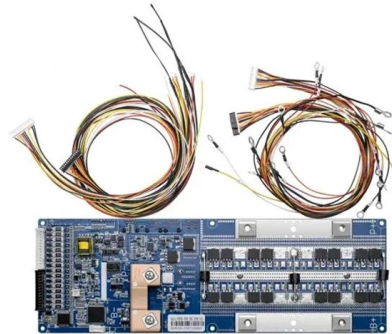
Information and reports on Optical Fiber Amplifier Imports Under HS Code 85437099 along with detailed shipment data, import price, export price, monthly trends, major exporting countries countries, major





Erbium-doped Fiber Amplifiers

Erbium-doped fiber amplifiers are by far the most important fiber amplifiers in the context of long-range optical fiber communications; they can efficiently amplify



Erbium-doped Fiber Amplifiers - Buying Guide & Suppliers

This erbium-doped fiber amplifiers buying guide provides technical background, comparison of major types, selection criteria, and an overview of suppliers.

15 Must-Know Questions for Erbium-Doped Fiber

EDFA stands for Erbium-doped fiber amplifier, a vital element in optical communication systems. In this article, we'll delve into 15 key questions



15 Must-Know Questions for Erbium-Doped Fiber Amplifiers (EDFA)

Using erbium-doped fiber amplification, EDFA compensates for attenuation from transmission and passive components. This maintains signal integrity and extends network reach without performance



- Full Customization Support
- Free Design & Fast Sample Service
- Eco-friendly & Certified Materials
- Strict Quality Control

SGS CE ISO 9001:2015
BSCI GCC

Erbium-doped fiber: Amplifiers: What everyone needs to know

This paper discusses erbium-doped fiber amplifiers and its applications. EDFA gain performance and fiber optimization, EDFA saturation and output power, amplified spontaneous



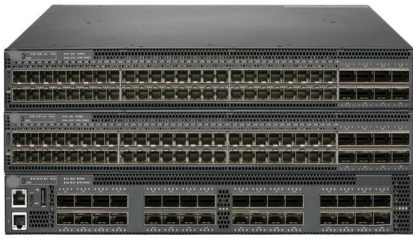
HS Codes , erbium doped fiber amplifier EDFA , Harmonised Code

Visit us online to get the various hs codes and commodity description.

Erbium Doped Fibre Amplifier HSN Code used for Export Import

It was developed by the World Customs Organization (WCO) for classifying goods for tax purposes at the 6-digit level and is used by Customs and Tax authorities worldwide.





Argentina

Permission to Import Documentation Requirements and Restrictions Import/Export Documentation Packing Lists Insurance Certificate Certificate of Origin Control of Preferential Origin Control of Non-Preferential Origin To claim preferential import duties when the country of origin has signed a trade agreement endorsing these preferences, as is the case of imports from member countries of MERCOSUR or ALADI (Latin American Integration Association). Argentine Customs authorities will require this document to grant preferential treatment at the importer's request. See more on trade.gov Cybex Exim

Erbium doped fiber amplifier Import Data Global - Cybex Exim

Erbium Doped Fiber Amplifier Import data is a record of global trade transactions involving Erbium Doped Fiber Amplifier products. It includes shipment details like HS code, importer/exporter names,

Erbium-Doped Fiber

Erbium doped fiber amplifier (EDFA) is defined as a crucial component in advanced wavelength division multiplexing (WDM) systems that provides optical gain over a wide wavelength range, typically

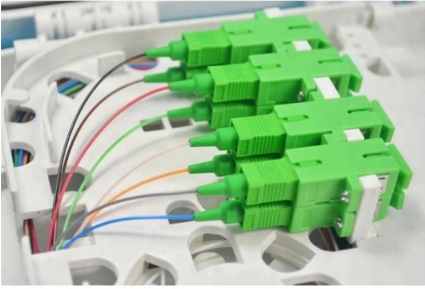


Erbium Doped Fiber Amplifier (EDFA)

Erbium Doped Fiber Amplifier (EDFA) EDFAs make use of the optical gain in an erbium doped fiber that is pumped by either 980 nm or 1480



nm light sources.



HQ 955748

Because the erbium doped fiber (an optical element) is a critical component for the optical amplifier, it cannot be considered subsidiary. This finding is consistent with the holdings in HQs 953516, 955114,

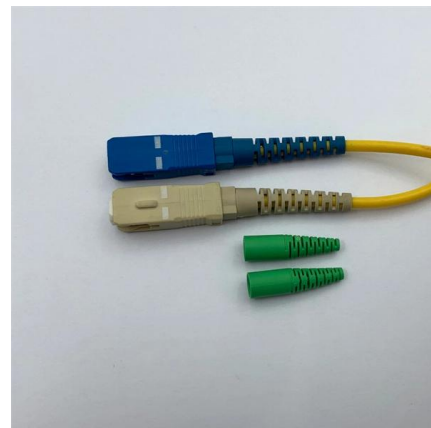


Customs Ruling HQ 955748

The merchandise is an erbium-doped high frequency fiber optical amplifier (hereinafter "optical amplifier") designed to extend the range (i.e., amplify) of any type of optical signal (digital, analog, or

Import customs procedures in Argentina

Customs procedures for selling a product in Argentina: information about customs rights and import taxes, Argentinian customs classification, methods of calculating and paying customs rights in



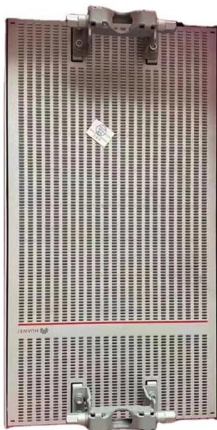


Erbium-doped Fiber Amplifiers

Erbium-doped fiber amplifiers use erbium-doped fibers. They typically operate in the 1.5- μm spectral region and are most frequently used for telecom systems.

Erbium-Doped Fiber Amplifiers (EDFAs): Foundations

Conclusion The erbium-doped fiber amplifier remains the cornerstone of optical communications, more than three decades after its invention. By directly



Erbium-doped Fiber Amplifiers (EDFA)

BaySpec supplies IntelliGain® series metro erbium-doped fiber amplifiers (EDFAs) designed for OEM integration into applications that require a high gain and a low

Optical Amplifier--EDFA (Erbium-doped Fiber Amplifier)

An Erbium-doped Fiber Amplifier (EDFA) is a device used to boost the strength of optical signals in fiber-optic communication systems. In EDFA in

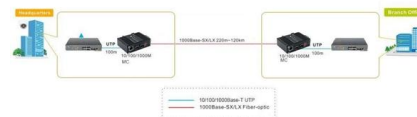


Erbium-Doped Fiber Amplifiers

High-power applications often involve ytterbium-sensitized fibers or double-clad fibers for enhanced pump absorption efficiency. Conclusion Erbium-doped fiber amplifiers remain a dominant technology

What is the Erbium-doped Optical Fiber Amplifier (EDFA) ? , Sopto

EDFA fiber amplifier, also known as erbium-doped fiber amplifier, is a major breakthrough in optical fiber communication technology because it can directly amplify weak optical signals without going through



Hier sollte eine Beschreibung angezeigt werden, diese Seite lässt dies jedoch nicht zu.



Contact Us

For datasheets, pricing, or custom telecom energy solutions, please visit:
<https://koskolong.co.za>