



Adam Tas Corridor Energy

Argentina Diode Laser Tube Test Socket





Overview

This TO-18 laser diode test socket features a 5mm diameter and supports over 40,000 plug-unplug cycles for reliable, high-frequency LD laser tube testing. TO-18 laser socket, laser diode test tool, LD tube socket. These laser diode sockets are ideal for OEM-type implementations and are compatible with our selection of Ø3. Mouser offers inventory, pricing, & datasheets for Laser Diode Socket IC & Component Sockets. Our headquarters are in Tokyo, with multiple manufacturing facilities across Japan. We perform a full range of processes in-house, including injection molding, turning, assembly, and inspection, leveraging our broad knowledge and experience to solve customer challenges.



Argentina Diode Laser Tube Test Socket



3MTM Textool™ Laser Diode Sockets

Compact miniature socket size for maximum board density Accomodates most any TO package format with pin circle options of .079" (2.0 mm) or .100" (2.54 mm), including popular laser

Laser Diode Socket IC & Component Sockets - Mouser

Mouser offers inventory, pricing, & datasheets for Laser Diode Socket IC & Component Sockets.



[display/node_modules/zxcvbn/dist/zxcvbn.js.map](#)

gitlab stea : clap de fin Après 10 ans de bons et loyaux services, la forge institutionnelle de feu Irstea baissera le rideau le 30 juin 2026 prochain
Nous

Laser Diode Sockets

A laser diode socket is a crucial component in systems that utilize laser diodes, especially in applications such as aesthetic treatments,



medical devices, industrial processing, and scientific instrumentation.



abc987-assets/english_words.csv at main · HTStudio987/abc987

abc987 oyunu için kelime listeleri, yasaklı kelimeler ve yasal metinler (Gizlilik Politikası & Kullanım Koşulları). - HTStudio987/abc987-assets



5x Thorlabs S7060R Laser Diode Socket for Ø5.6 mm Laser 3 Pin NEU

Lieferumfang 5 x Thorlabs S7060R Laser Diode Socket for Ø5.6 mm Laser Versand Sperrige Güter werden von uns per Spedition versandt. Der Versand erfolgt "frei Bordsteinkante". Natürlich ist es



passman/js/vendor/zxcvbn/zxcvbn.js.map at master · nextcloud

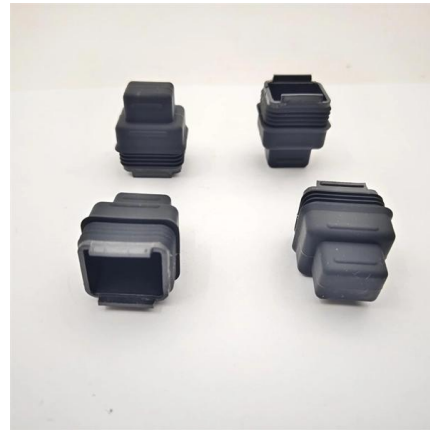
? Open source password manager with Nextcloud integration - nextcloud/passman





Laser Diode Tools and Accessories

Thorlabs offers a versatile range of accessories for convenient integration of laser diodes into functional systems. These laser diode sockets are ideal for OEM-type



[blocktrail-webwallet/src/lib/zxcvbn/dist/zxcvbn.js.map](#) at master

BTC Web Wallet. Contribute to blocktrail/blocktrail-webwallet development by creating an account on GitHub.

[pybitcoin/pybitcoin/passphrases/english_words.py](#) at master · stacks

A Bitcoin python library for private + public keys, addresses, transactions, & RPC - stacks-archive/pybitcoin



TO18 Dedicated 3-pin Fixable Laser Diode Test Socket

Enjoy Free Shipping Worldwide! Limited Time Sale Easy Return.



- ✓ 100KWH/215KWH
- ✓ LIQUID/AIR COOLING
- ✓ IP54/IP55
- ✓ BATTERY 6000 CYCLES

TO-18 (5.6mm) 3-Pin Laser Diode Test Socket for LD Laser Tubes

This TO-18 laser diode test socket features a 5mm diameter and supports over 40,000 plug-unplug cycles for reliable, high-frequency LD laser tube testing.



1pcs 7PIN T046 Photodiode Test Aging Socket -

4. Pin distribution: A = 3-4-0 structure parameter-- Applicable package shape Laser Diode Application Burn-in test / product function test; aperture spacing 2.54mm

5PCS 5PIN T046 Photodiode Test Aging Socket

5PCS 5PIN T046 Photodiode Test Aging Socket
Applicable package shape Laser Diode \$ 69.00 \$ 59.00 1 in stock Add to cart SKU: 4000966351070 Categories:





Test Socket and Fixture Solutions for EEL and VCSEL

Conventional test sockets that contact only the bottom side of a DUT won't work here. This custom burn-in fixture for EEL Diodes seats four

redundancy_reduction_longdoc/vocabulary_pubmed.json at master ·

This is the official code for the paper 'Systematically Exploring Redundancy Reduction in Summarizing Long Documents'. - Wendy-Xiao/redundancy_reduction_longdoc



1pcs 7PIN TO46 Photodiode Test Aging Socket - LaserSE Lasers Life

1pcs 7PIN TO46 Photodiode Test Aging Socket. 1. Product type: APD TO / ROSA / Rx. 2. Pin length: $L \leq 7.5 \pm 0.5\text{mm}$; 3. Pin diameter:



faker/internet.go at master · pioz/faker · GitHub

Random fake data and struct generator for Go. Contribute to pioz/faker development by creating an account on GitHub.



Crackhead/pass.txt at master · moimikey/Crackhead ·

How to create a web form cracker in under 15 minutes. - moimikey/Crackhead



To-18 (5.6mm) Package Laser Diode Special Test Socket Three

welcome to taobao purchase to -18(5.6) package laser diode special test socket three-pin ld laser tube test socket, taobao hundreds of millions of hot selling good goods, official logistics can send to the



Laser Diode Test Socket 3-pins LD Socket TO-18 (5.6mm)

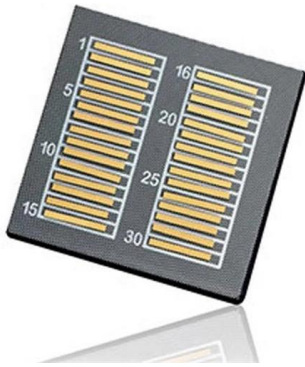
Three-legged laser diode test, the length of pin is universal. 2. Low resistance, not easy to oxidize, long service life. 3. Small size, easy to install and use. 1. Laser





rwkv_tokenizer/rwkv_vocab_v20230424.json at master · koute

Contribute to koute/rwkv_tokenizer development by creating an account on GitHub.

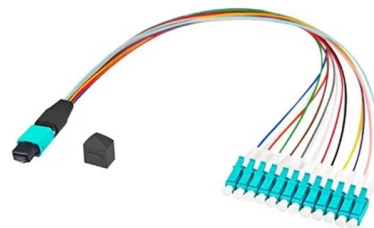


Laser Diode Socket Test Base 3pin for 9.0mm

3 pin socket designed for laser diode testing and projects. Solves soldering and wiring issues for many projects. Laser diode not included.

Laser Diode Sockets , JC CHERRY INC.

We offer a variety of sockets compatible with laser diode packages such as TO-18, TO-46, TO-52, and TO-72. We also provide cable-equipped sockets designed for FCD.



Laser Diode Socket Test Base 3pin for 5.6mm 5pcs

laser Diode Test Base 3 pin for 5.6mm designed for laser diode testing and projects. Solves soldering and wiring issues for many projects. Laser diode not included.



Laser Diode Tools and Accessories

These laser diode sockets are ideal for OEM-type implementations and are compatible with our selection of Ø3.8 mm, Ø5.6 mm, Ø9 mm, and TO-5 laser

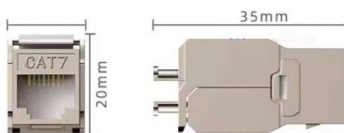


2. Imported design is convenient for expansion.

The design of two inlets saves space and allows for rear line entry.

Laser Diode Socket IC & Component Sockets - Mouser

Applied Filters: Connectors IC & Component Sockets Accessory Type = Laser Diode Socket
Number of Positions 3 Position 4 Position Reset
All Please modify your search so that it will return results.



Laser Diode Socket, 3-Pin TO-CAN Laser Socket

A 3-Pin TO-CAN Laser Socket is a specialized socket designed to accommodate and connect 3-pin TO-CAN laser diodes. It provides a convenient and secure means





Roithner Lasertechnik

SOCKETS FOR LASER DIODES Teflon Sockets for 5.6 mm and 9.0 mm laser diodes, 3-pins or 4-pins teflon body, gold plated contacts, superior quality

Contact Us

For datasheets, pricing, or custom telecom energy solutions, please visit:
<https://koskolong.co.za>