



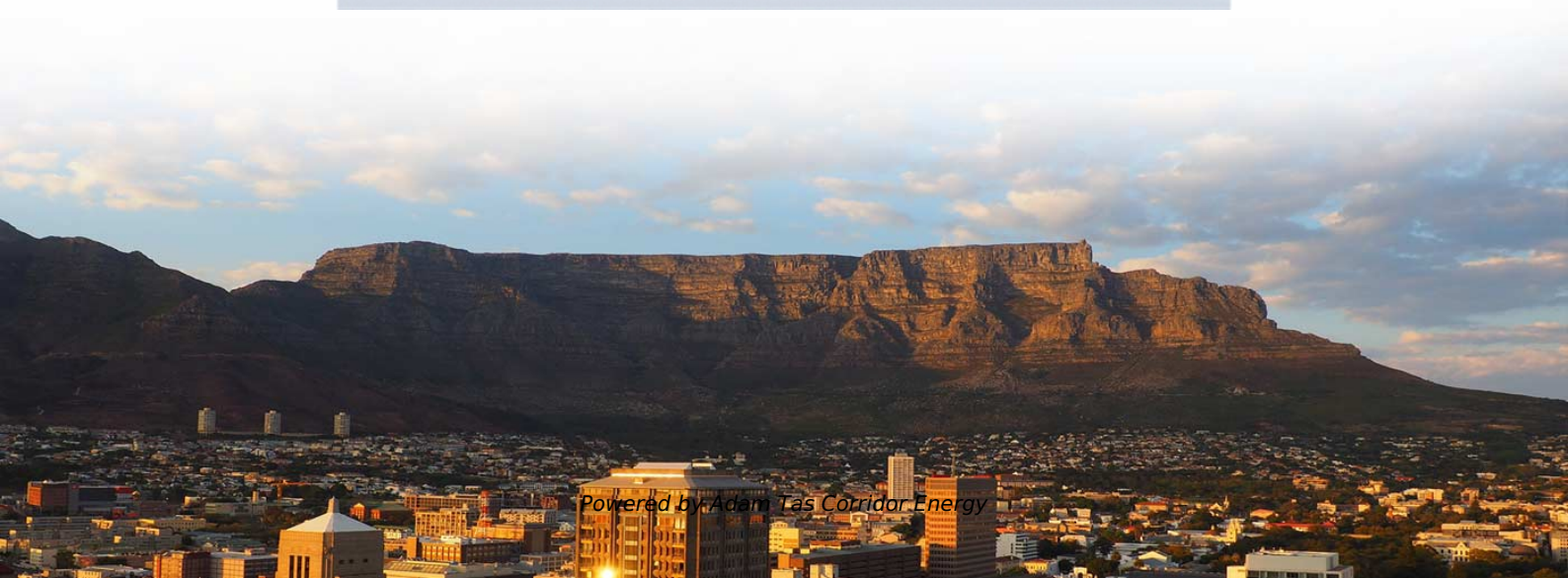
Armenian explosion-proof junction box distribution box

EFFICIENT FIELD TERMINATION



No Polishing | No Epoxy

Eliminates cable excess length and pigtail splice storage.
Designed for high-efficiency onsite installation.





Armenian explosion-proof junction box distribution box



Ex-proof Junction Box, Terminal Box & Enclosures , Supermec

Ex-Proof & Flameproof Junction Boxes & Enclosures Supermec ATEX Junction Box & Enclosures are designed to satisfy most of our clients' requirements for CONTROL explosion-proof and flameproof

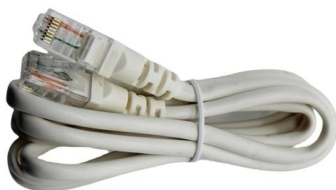
Explosion Proof Distribution Box & Electrical Enclosures

Durable Hexlon Explosion Proof Distribution Boxes and Electrical Enclosures, IECEx and ATEX certified for Zone 1 and Zone 2.



Factory Direct: Explosion Proof Anti-Corrosion Junction

BJX 220/380V 10-400A Explosion proof anti-corrosion junction box The shell of the explosion-proof control box is made of aluminum alloy, and the surface is high



Terminal and Junction Boxes , Explosion Protection

Terminal boxes and junction boxes from Pepperl+Fuchs are designed to protect signal



and power distribution networks in explosion-hazardous and challenging environments.



Explosion-Proof Junction Box for Hazardous Areas

Explore the features, working principles, and benefits of an Explosion-Proof Junction Box -- essential for safe electrical connections in hazardous



Ex-Proof & Flameproof Enclosures & Junction Box , Supermec

Ex-Proof & Flameproof Junction Boxes & Enclosures Supermec ATEX Junction Box & Enclosures are designed to satisfy most of our clients' requirements for CONTROL explosion-proof and flameproof



Plastic junction box / explosion-proof / in-line / with cable

4BJ Article: 00070546 Plastic junction box / explosion-proof / in-line / with cable gland 4B Group junction boxes are suitable for all applications demanding a





Explosion-proof Distribution Box

China Explosion-proof Distribution Box catalog of Exd Explosion Prevention Exe Aluminum Alloy Junction Box Explosion-Proof Threading Straight Box Ex Seal Wire Box, Explosion-Proof Type a



Ex Local Control Stations & Distribution Boxes

Atex control stations, explosion protected control units and distribution boxes made stainless steel maritime grade AISI 316L or AISI 304L. Atex Delvalle provides a

Explosion-proof Junction Box , KNTECH

Explosion-proof power distribution device KNBXM is made of aluminum alloy shell with 4*M20 holes. We can manufacture explosion-proof boxes according to user



Junction Box Aluminium (Ex d) EJB-A

EJB A series Ex d enclosures are normally used in the chemical and petrochemical plants, offshore platforms, refineries and any other industry where hazardous



Terminal boxes , Junction boxes , Ex , Ex e , Ex d , ATEX , Explosion

Terminal boxes for safe installation in hazardous areas Safely conduct, connect and distribute energy in hazardous areas with R. STAHL's terminal boxes. We offer bespoke, custom-made terminal boxes



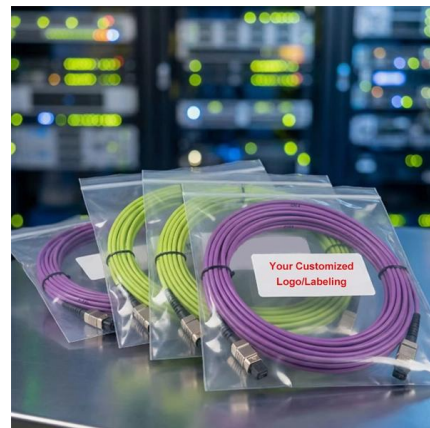
Explosion-Proof Junction Box for Power Cables

Explore our Junction Box for Power Cables Connection, designed for electrical heating systems in explosion hazard areas. Featuring IP66 rating, easy



Ex Junction Boxes and ATEX Enclosures · ATEX Delvalle

Our ATEX Delvalle's Ex junction boxes and large enclosures are flameproof and prepared for use them in explosive atmospheres zones 1,2,21 and 22. ATEX





Terminal boxes , Junction boxes , Ex , Ex e , Ex d , ATEX , Explosion



Safely conduct, connect and distribute energy in hazardous areas with R. STAHL's terminal boxes. We offer bespoke, custom-made terminal boxes and terminal box combinations, as well as standard

Ex junction and terminal boxes - Explosion-Proof , mlx-ex

GRP Ex terminal boxes What are Ex Terminal Boxes? Ex terminal boxes are protective enclosures used to connect and distribute electrical circuits safely within explosive atmospheres. They serve as



Ex-Proof & Flameproof Enclosures & Junction Box , Supermec

All explosion-proof enclosures, lighting or power distribution boxes are manufactured using the latest technologies, both mechanical and electrical, using materials able to resist in most highly corrosive

EX-PROOF JUNCTION BOXES and ENCLOSURE SYSTEMS -

Ex-proof round junction boxes are made from aluminium alloy or stainless steel and are used to accommodate cables connected both with multi-pole terminal strips and modular terminals.



Atex Certified Junction Boxes, Terminals, Sockets

These explosion proof junction boxes / terminal boxes, plugs, sockets & connectors are for use in explosive atmospheres in compliance with the ATEX 94/9/EC



Aluminum explosion proof distribution box

Discover efficient aluminum explosion proof distribution box solutions designed for optimal power distribution. Enhance your operations with reliable, durable equipment tailored to your needs.



DB 6000 Series

Explosion proof junction boxes with detachable covers which are secured to the body by high tensile screws. Available in five sizes, these boxes provide a wide range of termination and distribution





STExJ2 Junction Box

STExJ2 Junction Box The STExJ2 is a versatile globally certified explosion proof junction box. The robust IP66/67 corrosion proof 316L grade stainless steel enclosure with extended temperature range



Atex Certified Junction Boxes, Terminals, Sockets &

Explosion Proof Junction Box / Connectors These explosion proof junction boxes / terminal boxes, plugs, sockets & connectors are for use in explosive atmospheres

ATEX/IECEX Certified Explosion Proof Junction Box

Prolux provides you with the No.1 quality ATEX & IECEX certified explosion proof junction box at the best-discounted rates. We are the top ex. proof junction boxes



Explosion-proof junction Boxes , Cortem S.p.A.

The explosion-protected junction and pulling boxes, available in different methods of protection and materials, can also be used with terminals, as a command and



Contact Us

For datasheets, pricing, or custom telecom energy solutions, please visit:
<https://koskolong.co.za>