



Adam Tas Corridor Energy

Australian procurement of 2-core outdoor wiring boxes





Australian procurement of 2-core outdoor wiring boxes

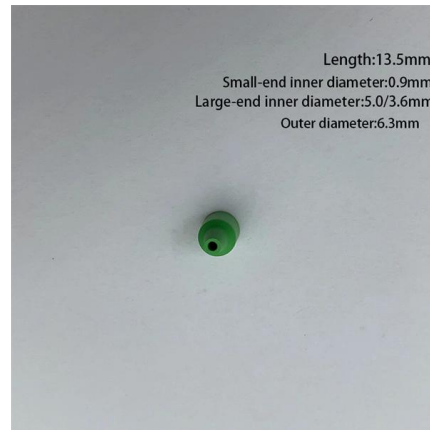


Wiring Rules 2018: Part 2, Section 3

This section deals with wiring from the incoming supply point to the final sub-circuit extremities. As with the selection of equipment, there are many

Electrical Installations: Wiring Rules , Building It Right , HIA

Australian Standards - AS/NZS 3000:2018
Electrical installations - wiring rules Buy now
Home Resources & advice Building it right
Australian



Electrical Junction Box & J Boxes , Plastic, Metal & More

Junction boxes, also known as electrical outlet boxes, terminal boxes or J boxes, act as weatherproof outdoor enclosures that provide secure housing for electrical wiring and devices. These waterproof

Australian Electrical Wiring Standards

Explore Australian Electrical Wiring Standards with Intertek Inform's guidance. Ensure safety,



compliance, and quality in electrical installations across projects.

Mesh door/glass door optional



Sp-601 glass door

Sp-602 mesh door

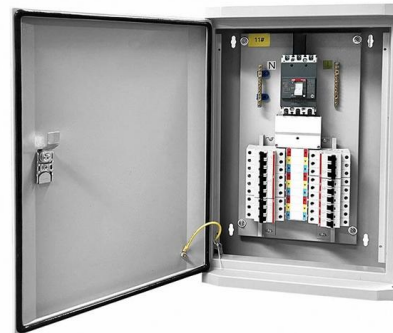


Waterproof Junction Boxes & Outdoor Lighting Cables

Discover our top-class range of waterproof junction boxes, outdoor lighting cables & more weatherproof electrical supplies. Australia wide delivery.

Electrical Cables: Shop Trade-Quality Wires & Cable Supplies Online

Shop electrical cables at Sparky Direct. Power & lighting cables for indoor & outdoor use. Unbeatable deals & fast shipping.



Junction Boxes , Electrical Accessories , Australian Supplier of

Junction Boxes from Voltex, Australian supplier of electrical accessories, LED Lighting, Solar products including Junction Boxes & Electrical Accessories, IP56 rated switchgear and other weatherproof





Australia Electrical Tenders, Bids and RFP

Latest Australia Electrical Tenders, Government Bids, RFP and other public procurement notices related to Electrical from Australia. Users can register and get updated information on



Commonwealth Procurement Rules

Commonwealth Procurement Rules The Department of Finance is updating all guidance materials to reflect changes made to the Commonwealth Procurement

Home , Standards Australia

Explore Australia's leading hub for technical standards. Stay ahead with Standards Australia's latest updates and resources, or visit our Standards store.



LINK BOXES

CableGrid Australia is the exclusive distributor in Australia and New Zealand for a comprehensive range of link boxes. CableGrid has an extensive range of various



Commonwealth Procurement Rules

The Department of Finance is updating all guidance materials to reflect changes made to the Commonwealth Procurement Rules that take effect on 17 November



Australian Electrical Wiring Standards (AS/NZS 3000:2018 Wiring Rules)

Explore our comprehensive blog on Australian Electrical Wiring Standards (AS/NZS 3000:2018). Stay informed about the latest rules and best practices in wiring.

Mains Boxes and Overhead Connections , Installation

100% Australian family owned, CNW Electrical Wholesale has the electrical supplies you need. Start saving now!





Changes to AS NZS 3000 2018 Wiring Rules Standard

The new edition of AS/NZS 3000 Wiring Rules (Electrical Installations) was published on 26 June 2018 and took effect in most states and territories on 1

Electrical standards, rules and notes , NSW Government

Essential resources for the electrical industry including wiring rules, advisory notes, compliance requirements and technical guidance.



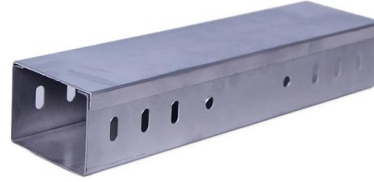
Australian Light Switches : r/electricians

Thought you would all like to see a normal Australian light switch in a domestic setting. This is more or less what's normal. There is no wall box required behind the platerboard (dry wall). Conductors must



K2 Components

The extensive history as an original equipment manufacturer within the automotive, mining, building and seating industries allows K2 Components to continue



Junction Boxes and Enclosures Wholesale , AGM Electrical

Junction Boxes ensure the safety of your client's wiring and electrical box components by protecting them from external factors such as temperature shifts,



AusTender Homepage: AusTender

AusTender provides centralised publication of Australian Government business opportunities, annual procurement plans and contracts awarded.



Electrical Boxes

B& R Enclosures specialise in the manufacture and supply of electrical boxes and have since 1955. These include meter boxes, switchboard systems, industrial





A Comprehensive Guide to Residential and Commercial Wiring

Learn about residential and commercial electrical wiring systems in Australia, designed to meet safety standards and ensure efficient power distribution.

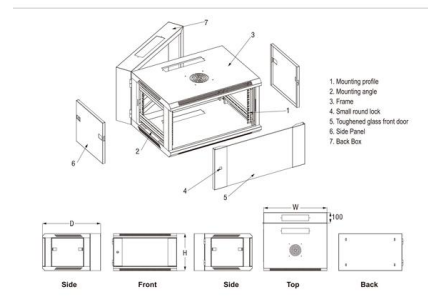


Outdoor fittings and cabling , BUILD

Find out what the law says about outdoor electrical fittings. Fittings used outdoors should be adequately rated to ensure that they are weatherproofed. There are some basic extra rules for

Australian wiring rules: New home electrical installations

AS/NZS 3000:2018 wiring rules require ALL final sub-circuits to be 30mA RCD protected. This includes fixed electrical equipment like cooktops, hot water



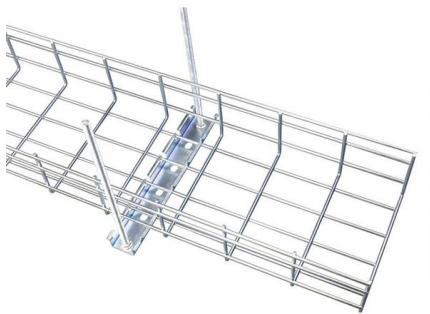
Junction Boxes and Enclosures Wholesale , AGM Electrical

Our state-of-the-art electrical junction box and enclosures are perfect for housing loose wires and electrical connections. They protect these connections and act as



Installing Outdoor Power Points: Electrical Safety Standards To Follow

Installing outdoor power points requires strict adherence to Australian electrical standards and regulations, yet many homeowners and even some sparkies overlook crucial safety requirements.

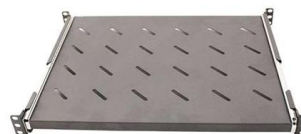


Outdoor Junction Box: Your Guide to Safe Aussie

Need an outdoor junction box for wiring outside? Our Aussie guide explains why IP-rated weatherproof boxes are essential for safety in our climate and what features

Australian Light Switches : r/electricians

This is a looped at the switch method, 1 incoming 3 core cable feed, out going 3 core cable feed, and a 3 core cable to the light. There is also a twin core plus single core cable to 2nd switch to make it 2 way.





Contact Us

For datasheets, pricing, or custom telecom energy solutions, please visit:
<https://koskolong.co.za>