



Adam Tas Corridor Energy

Bahamas Single-Fiber Bidirectional Optical Module





Bahamas Single-Fiber Bidirectional Optical Module



What Is A Single-Fiber BiDi Transceiver?--ETU-LINK

When planning a fiber optic network, one key decision is choosing between single-fiber (BiDi) and dual-fiber optical transceivers. This guide from ETU-Link explains

The Essential Guide to BiDi Transceivers: Everything

BiDi transceiver, a compact optical transceiver with WDM (wavelength division multiplexing) technology and SFP multi-source protocol



Single Fiber vs Dual Fiber Transceivers Understanding

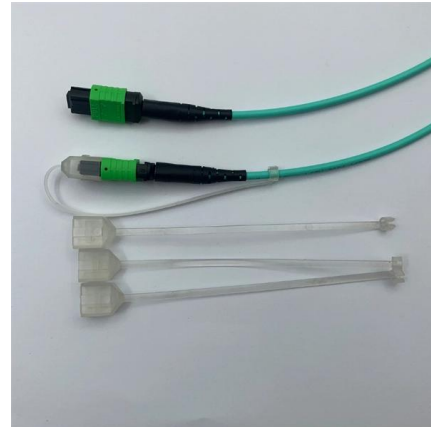
A dual fiber optical transceiver uses two separate fibers--one for transmitting and the other for receiving data. This design ensures higher

What Is A Single-Fiber BiDi Transceiver?--ETU-LINK

What is a Single-Fiber (BiDi) Transceiver? Single fiber module also called BiDi transceiver or WDM



module. It uses WDM technology to realize the bidirectional



What is BiDi Transceiver: A Beginner's Guide

What is a BiDi Transceiver? BiDi transceiver, or Bidirectional or simplex optical transceiver, is an optical module that uses Wavelength Division

Brief introduction of single fiber bidirectional (BIDI)

The BiDi optical module uses an optical fiber to achieve two-way data communication, which means that the BiDi optical module can make the signal



BiDi Single-Fiber Bidirectional Optical Module Details

The interface of optical module is mainly divided into single-fiber bidirectional BiDi, dual-fiber bidirectional (Deplx) and other types. In WDM system, the line transmission method mainly



BiDi Optical Modules: Unlocking Single-Fiber

Comprehensive guide on BiDi Optical modules, detailing single-fiber bidirectional connectivity, deployment tips, troubleshooting, and multi-speed



BiDi SFP Module: A Complete Guide for Fiber Networks

Learn what a BiDi SFP module is, how it works, key types, benefits, and when to use BiDi optics in fiber networks.

The Essential Guide to BiDi Transceivers: Everything

Bi-Directional (BiDi) Transceiver is a compact optical transceiver module that uses WDM (wavelength division multiplexing) technology and is



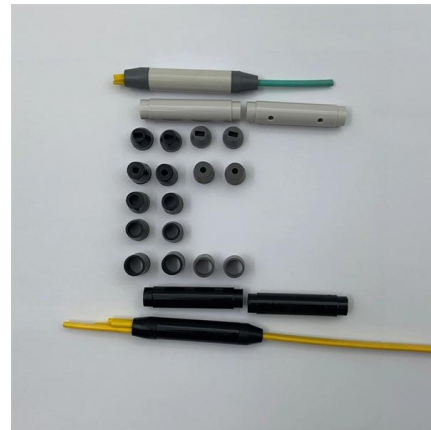
Single-fiber Bidirectional Transceivers

How Bidirectional Transceivers Work BiDi modules enable two-way communication over a single optical fiber by using a WDM (wavelength-division multiplexing) filter



BiDi Optical Modules: Unlocking Single-Fiber

BiDi modules deliver a powerful approach to fiber savings and cost reductions through full-duplex communication over a single fiber strand. BiDi

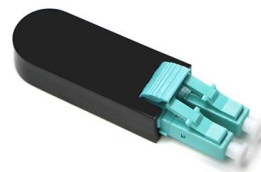


What is the BiDi Fiber Optical Transceives and How to

The structure of the single-fiber BiDi optical module is more complicated than that of the ordinary dual-fiber bidirectional optical fiber module,

To BiDi or Not To BiDi: The Pros and Cons of 25G and

A 25G Bi-Directional, or BiDi, uses one port with two optical signals of different wavelengths to transmit and receive signals over a single strand fiber.





FAQ: What Is Single-Fiber Bidirectional

In Single-Fiber bidirectional mode, multi-wavelength optical signals are transmitted through only one fiber in both receive and transmit directions. This mode is mainly used on the client

Ubiquiti Networks 1 Gbps Bidirectional Single-Mode

Enhance your network with the Ubiquiti 1 Gbps Bidirectional Single-Mode Optical Module. Enjoy seamless 3 km connections with simplex LC connectors and low

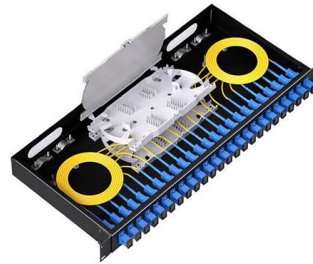


BiDi Optical Module: Features And Applications

A BiDi (Bidirectional) optical module adopts WDM (Wavelength Division Multiplexing) bidirectional transmission technology, enabling simultaneous bidirectional transmission within an

The Complete Guide to BiDi Transceiver

Unlike traditional optical modules that use separate fibers for transmitting and receiving data, BiDi modules accomplish this bidirectional data



What is BiDi Transceiver: A Beginner's Guide

The BiDi module integrates the conventional TOSA and ROSA into a single fiber connector, often called BOSA. Inside the BOSA, there is an optical



Bi-Directional (BiDi) Transceivers Explained

Fiber optic Cabling technology is the backbone of modern networks, transmitting massive amounts of data at the speed of light. Understanding fiber



2.5G Single-Fiber-Bidirectional Module 3km SFP 1310/1550nm with

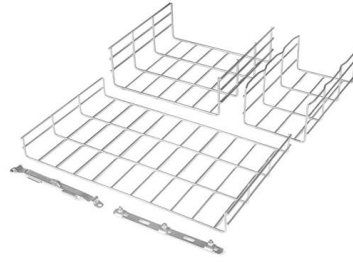
2.5G Single-Fiber-Bidirectional Module 3km SFP 1310/1550nm with SC Connector Optical Fiber Transceivers 5.0 (2 reviews) 4 sold#6 Most Popular in Fiber Optic Equipment For Data Centers





BiDi SFP: The Complete Guide to Bidirectional SFP Transceivers and

What Is a BiDi SFP? A BiDi SFP is a specialized optical transceiver that enables bidirectional communication over a single strand of optical fiber.



BIDI SFP

BIDI SFP module is an optical module using WDM (wave division and multiplexing) bidirectional transmission technology, which enables the simultaneous bi

Contact Us

For datasheets, pricing, or custom telecom energy solutions, please visit:
<https://koskolong.co.za>