



**Adam Tas Corridor Energy**

# **Bandwidth Aggregation Switch**





## Overview

---

By the mid-1990s, most network switch manufacturers had included aggregation capability as a proprietary extension to increase bandwidth between their switches. By bundling multiple network connections into a single high-bandwidth link, aggregation switches help streamline traffic flow and reduce bottlenecks in enterprise or campus networks. Link aggregation increases total bandwidth beyond what a single connection could sustain, and provides redundancy where all but one of the physical links. Amounts or summary statistics are used in place of atomic data rows, which are often collected from several sources when data is aggregated.



## Bandwidth Aggregation Switch

---



### Understanding Switch Aggregation: A Comprehensive

This blog post explains link aggregation as a way of bundling individual Ethernet links together so they act as a single logical link. Extreme

### Interfaces User Guide for Switches

Example: Configure Link Aggregation Between a QFX Series Switches and an Aggregation Switch  
A QFX Series product allows you to combine multiple Ethernet links into one logical interface for higher



### In-depth analysis: What is an aggregation switch?

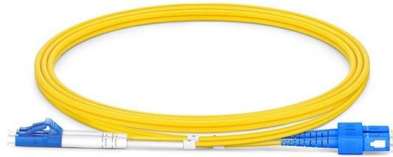
In many network constructions, we have all heard of switches. So do you really understand switches? Why are aggregation switches often overlooked?

### Aggregation Switch

An aggregation switch refers to a type of switch used to connect multiple ToR switches to a core switch/router in a cloud data center network. It



enables high-bandwidth aggregation ports to be



### **What is "link aggregation" and how does it benefit your**

Using Link Aggregation it is simple to have these multiple Ethernet connections to act as one logical connection, hardening the network in case a

### **What is an Aggregation Switch?**

The aggregation switch is located in the middle of the network architecture, which is equivalent to a middle-level manager of a company. It



### **Aggregation Switches**

Aggregation switches consolidate data traffic from multiple network access switches into a single high-bandwidth link to the core network. In the



## Link aggregation

Overview  
IEEE link aggregation  
Motivation  
Architecture  
Proprietary link aggregation  
Support  
Linux drivers  
Usage

By the mid-1990s, most network switch manufacturers had included aggregation capability as a proprietary extension to increase bandwidth between their switches. Each manufacturer developed its own method, which led to compatibility problems. The IEEE 802.3 working group took up a study group to create an interoperable link layer standard (i.e. encompassing the physical and data-link layers both) in a November 1997 meeting. The group quickly agreed to include an automatic configuration feature which



## Aggregation Switch: Increasing the Priority of Special Traffic

Aggregation switches set up stacks to implement device-level backup and increase the interface density and forwarding bandwidth. Before deploying QoS, ensure that the campus network is connected. For

## Everything You Need to Know About Aggregation Switch

What is an Aggregation Switch and How Does it Work? An aggregation switch consolidates data traffic from multiple network access



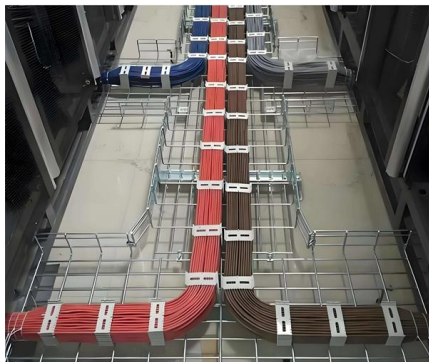
## Link Aggregation



Learn how to configure Link Aggregation Groups (LAGs) on Sophos Switch to boost bandwidth, improve reliability, and manage LAG and LACP settings effectively.

## Link Aggregation: Static vs Dynamic, LACP, and MLAG

Understand how link aggregation (LACP, MLAG, static vs dynamic) improves bandwidth and redundancy. Learn configuration steps on Cisco and



## Aggregation switches and routers

Enormous bandwidth growth in fixed, mobile and cable networks is forcing service providers to take the next step in scaling their metro networks. The move to

## What is WAN Aggregation/WAN Aggregator? , Fortinet

Fortinet's SD-WAN also supports aggregation with on-demand detection and reporting of WAN bandwidth. In a world where digitization is vital and application





## Core Switch vs. Distribution Switch vs. Access Switch

Core Switch vs. Distribution Switch vs. Access Switch: Understand Their Roles in Ethernet Networks Ethernet networks are growing and becoming more complex,

## What is an Aggregation Switch? , Features and Practical Benefits

It is a networking tool called an aggregation switch that enables the consolidation of several network connections into a single link. This makes it possible to boost bandwidth and



## Enhance Your Network with a Link Aggregation Switch:

Discover the benefits, configuration, and best practices of using a link aggregation switch to enhance your network. Combine multiple Ethernet links into

## What Is Link Aggregation and Link Aggregation Switch?

What Is Link Aggregation and Link Aggregation Switch? 1GbE network is ubiquitous at the edge of network, but it is reaching the limits as the demand for bandwidth continue to soar. Since 10

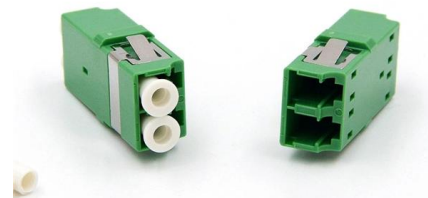


## What is an Aggregate Switch?

An aggregate switch is a high-capacity network switch that consolidates connections from multiple access switches, acting as a central point for managing network traffic and providing

## What is Switch Aggregation, Its Role and Selection Advice

This article wraps up "what is switch aggregation" and suggestions for choosing an aggregation switch. By considering these factors, network administrators can make informed



## Port Aggregation FAQs

Switch-to-Switch Aggregation: This is useful in scenarios where you need to interconnect multiple switches to increase the bandwidth available between them



## What is Link Aggregation (LAG) in Networking?

This combination leads to the aggregation of bandwidth from each physical link, resulting in a higher throughput. For example, if four 1Gbps links are combined



## What Is an Aggregation Switch and How to Choose?

By combining traffic from multiple access switches, aggregation switches maximize bandwidth usage and ensure high-speed, reliable connectivity for all devices on

## Link Aggregation: What is it, and How Does it Work?

Link aggregation is a way of bundling a bunch of individual (Ethernet) links together so they act as a single logical link. A fundamental for effective



## Multi-chassis link aggregation group

Switches A and B are each configured to group four discrete links (as indicated in green) into a single logical link with four times the bandwidth. Standard LACP protocol ensures that if any of the links go



## Contact Us

---

For datasheets, pricing, or custom telecom energy solutions, please visit:  
<https://koskolong.co.za>