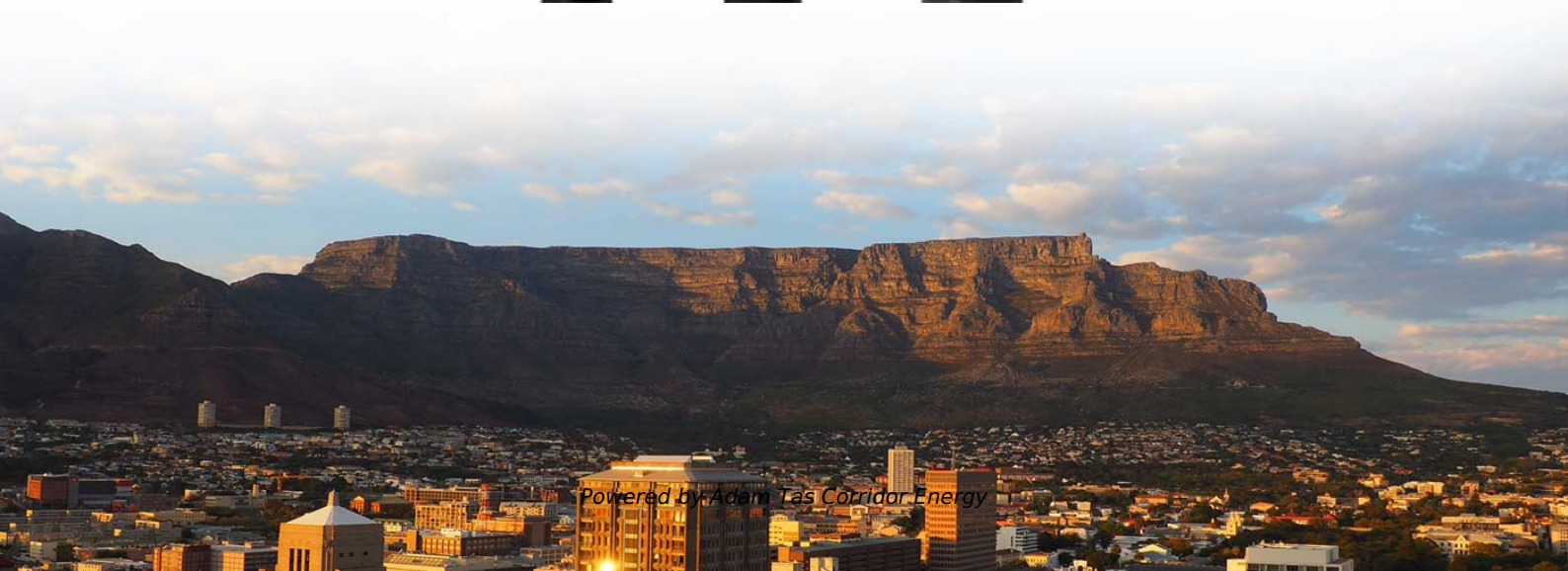
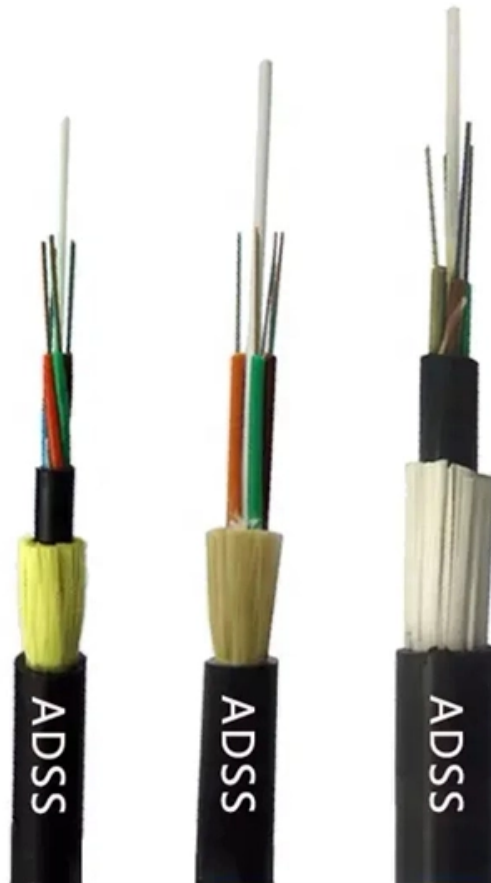




**Adam Tas Corridor Energy**

# **Basic Equipment for Relay Protection**





## Basic Equipment for Relay Protection

---

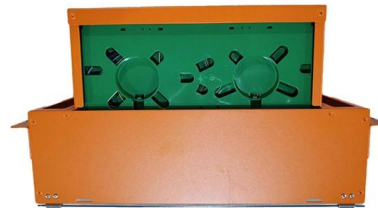


### Protective Relay: Working, Types, and Applications

Learn about protective relays, their working principle, types, and applications in power systems. Discover how relays protect transformers,

### Basic Types of Protection Relays and Their Operation

Protective relays are the building blocks used to develop protection systems. Digital relays held an enormous advantage over any of their predecessors with the new ability to add



### Protective Relay Technology: Safeguard Electrical Systems

Explore Protective Relay Technology: the key to electrical safety. Discover its types, functions, and how it prevents system failures.

### Introduction to Protective Relaying , Electric Power

Introduction to Protective Relaying What are Protective Relays, or Protection Relays?



Protective relays are used in industrial power generation and supply



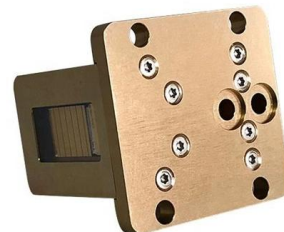
## Power System Protective Relays: Principles & Practices

Protective relays and devices have been developed over 100 years ago to provide "lastline" of defense for the electrical systems. They are intended to quickly identify a fault and isolate it so the balance of



## Protective Relay Training - Basic Power System Protection

Protective Relay Training - Basic Protective relay training offers an overview of power system protection, relay schemes, digital and electromechanical relays, fault



## Protective relay basics , Eaton PSEC

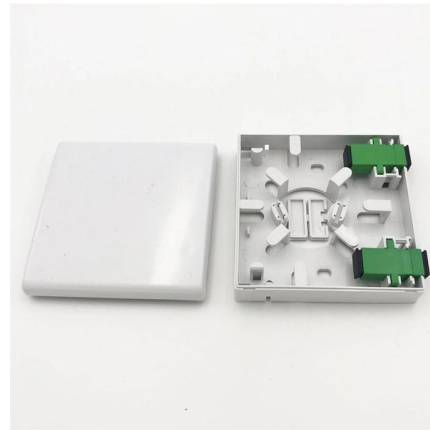
Learn everything you need to know about protective relays, the essential devices used to safeguard electrical power systems from faults and abnormal conditions.





## Types of Electrical Protection Relays or Protective Relays

? Key learnings: Protective Relay Definition: A protective relay is an automatic device that senses abnormal conditions in electrical circuits and



### Basic protection relay knowledge

A fast and selective arc fault mitigation for air-insulated LV & MV switchgear and Relion protection and control relays and sensor technology protect staff and plant facilities for many years.

### Practical handbook for relay protection engineers , EEP

Also principles of various protective relays and schemes including



### RELAY BASICS

RELAY BASICS Relays Relays are electro magnetically operated switches. An actuating current on a coil operates one or more galvanically separated contacts or load circuits. The electro mechanical



## A Complete Guide to Protective Relays and Their Role

In this blog, we'll discuss the essentials of protective relaying, exploring how it helps maintain system integrity, protects valuable equipment,



## Basic Theories of Power System Relay Protection

This chapter first introduces the basic theories of power system relay protection, summarizes the functions and basic requirements of relay protection, and illustrates the basic principles of relay

## Types of Electrical Protection Relays or Protective Relays

Protective relays can be categorized based on their operating mechanisms into electromagnetic relay, static, and mechanical types.





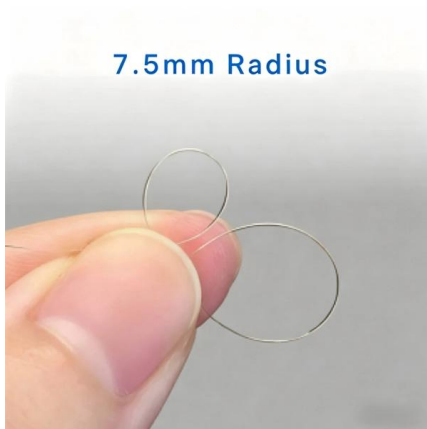
## Switchgear - Complete Deep Explanation (Basic to Advanced)

Switchgear - Complete Deep Explanation (Basic to Advanced) What is Switchgear? Switchgear is a combination of electrical devices used to: Control electrical power, Protect electrical equipment



## Protective relay

Electromechanical protective relays at a hydroelectric generating plant. The relays are in round glass cases. The rectangular devices are test connection blocks,



## Protective Relaying

Within this context, there are five basic facets of protective relay application. Before discussing these, it should be noted that the use of the term

## Protective Relay Training - Basic Power System Protection

This protective relay training is delivered from a practical protection perspective, using real system examples to illustrate how protection schemes behave under



## Understanding Protective Relays in Electrical Power Systems -

Introduction to Protective Relays Protective relays are essential devices used in electrical power systems to detect faults and abnormal conditions, initiating corrective actions to prevent equipment



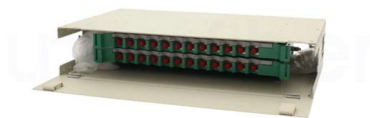
### Protective Relay Basics

The objective of this presentation is to convey a basic understanding of protective relays to an audience of engineers already familiar with low voltage protective device coordination.



## Understanding Protective Relays in Power Systems

Protective relays are critical components in power systems, providing essential protection for various elements such as generator sets, outgoing feeder





## What is a Protective Relay? Principle, Advantages,

Protective Relay Principle A protective relay is an electrical component that is designed to trip a circuit breaker when a fault is encountered or



## Protective Relaying Principles and Applications

Protective Relaying Principles and Applications  
The article provides an overview of protective relaying principles and their applications for high-voltage power system

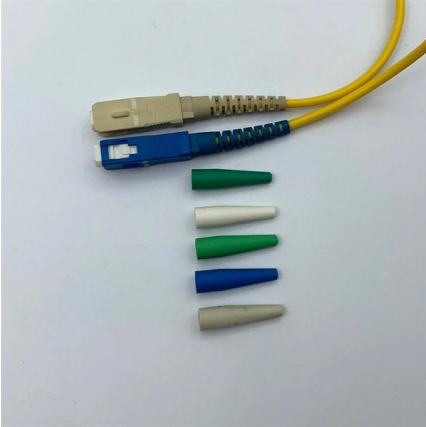
**doi: 10.1007/978-3-319-20919-7\_3**

The protective equipment (CBs, VTs, CTs, and relays) are connected together to enable closed-loop simulation, i.e., the trip signals of the relays are fed back to the CBs. The configuration and



## Protection System in Power System

Let's have a discussion on basic concept of protection system in power system and coordination of protection relays. In the picture the basic



## Contact Us

---

For datasheets, pricing, or custom telecom energy solutions, please visit:  
<https://koskolong.co.za>