



Adam Tas Corridor Energy

Brazilian Agent Optical Cross-Connect Box 8-core





Brazilian Agent Optical Cross-Connect Box 8-core



The technological evolution of optical cross-connect OXC!

As the core switching unit of the optical network, the scalability and economic efficiency of the optical cross-connect (OXC) not only determine the

Indoor 8 Core Fiber Distribution Box for Optical Cable , CRXCONEC

Ideal for last mile FTTH deployments, this versatile 8 core fiber distribution box is perfectly suited for small-scale installations in apartments, residential, or commercial buildings, enhancing floor



Fiber optic terminal box 8 core Desktop LC with adapter

Find more 509, 50920 and 100001204 products. Enjoy Free Shipping Worldwide!

Premium 8-Core Fiber Optic Terminal Box For High

BD-FTB-8B fiber terminal box is able to hold up to 8 subscribers. The fiber optic terminal box is



used as a termination point for the feeder cable to connect with



Sc Upc/apc 8 Cores Optical Patch Panel Metal Material Fiber Optic

Fibre optic termination box is the final connector of a fibre optic cable, he has a fibre optic cable at one end and a pigtail at the other, which is equivalent to a device that splits a fibre optic cable into a



Optical Cross-Connect (OXC) Fundamentals

Compared to manual methods, today's OXCs allow instantaneous (ms-scale) cross-connections by software, eliminating human error. This evolution--from fixed patch panels to flexible,



Optical Cross-Connect Switch Architectures for

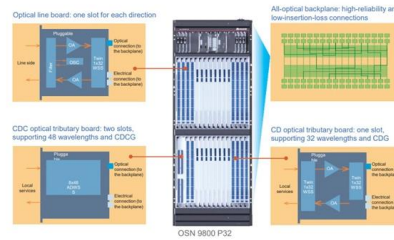
This paper proposes new switch architectures for hierarchical optical path cross-connect (HOXC) systems. The architectures allow incremental





Pre-connectorized Distribution Box 8DY

Pre-connectorized optical distribution box as the most advanced FTTX network distribution node equipment, provide quick and reliable connection, good protection and management for the FTTX



Telecom 8 Core Fiber Optic Splitter Terminal Box

Telecom 8 Core Fiber Optic Splitter Terminal Box Product Model SP-1602-8C Product Description SP-1602-8C fiber access termination box is able to hold up to

8 Port Fiber Access Terminal (FAT) with Mid-span Entry

The 8 port termination box supports 2 entry cables with Dia \leq F12mm, which enables optical fiber cable distribution and 1:8 optical signal splitting, support 8 cores Splice .



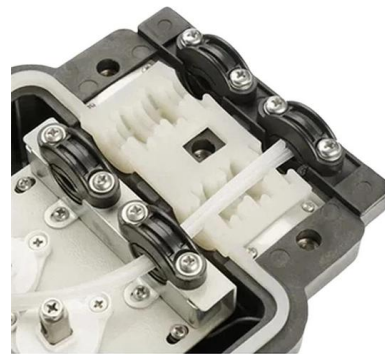
Optical Cross-Connects Explained

Learn how Optical Cross-Connects simplify network management and improve data transmission in communication systems.



Cross-Connect Cabinet , Corning

Copper Connectivity and xDSL Outside Plant
Outside Plant Distribution Cabinets Cross-
Connect Cabinet Find a Distributor



8 Core NAP ODP FTB FTTH 3 Inlet Fiber Access

This distribution box can connect up to 2 optical
cables, providing space for distributors and 8
fuses. It is equipped with 8 SC adapters for
efficient

OCC-080-G , Optical Cross-Connect (OCC) Cabinets & Kits 80-in

Compatible with Corning rack-mountable
hardware, these cabinets can accommodate
many combinations of connector, splice and
coupler housings. This modular system makes it
possible to





Gabinetes de fibra óptica de conexão cruzada

Fibconet Fiber Optic Cross Connect Cabinets integrate various systems, including DSLAM and cross-connect chambers, in a single cabinet.

Optical Cross-Connects: The Ultimate Guide

Discover the fundamentals and applications of Optical Cross-Connects in optical materials and their impact on modern telecommunications.



Design of an optical cross-connect architecture

This paper describes the design of an optical cross-connect (OXC). The OXC is designed to offer 4 sets of input and output fiber ports with each fiber transporting four multiwavelength signals.

Outdoor Aerial Fiber Optical Cross Connect Splicing

Outdoor Aerial Fiber Optical Cross Connect Splicing Terminal Optical cross connect splicing terminal offers the fastest hook up and disconnect speeds of any drop



BOC-008B 8 Core Fiber Distribution Box

The 8-core outdoor fiber optic distribution box provided by OTRANS can effectively improve the stability and security of network transmission, and is widely used in



Cross Connect Cabinet , FIBEYE

Fiber optic cross connect cabinets offer a wide range of functionalities to meet your business requirements while providing cost-effective solutions. They can simplify



Huawei's Data Center All-Optical Switch Wins the Special Prize at

Huawei has innovatively introduced the all-optical cross-connect (OXC) technology to data center networks (DCNs) and launched the industry-leading DC optical switch -- Huawei





Optical fiber cross box

These enclosures provide a secure, organized environment for splicing, terminating, and distributing fiber optic cables. Designed for protection and accessibility, they ensure signal integrity, minimize

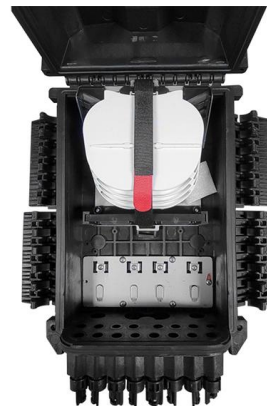


Optical cross-connect system incorporated with newly developed

The optical cross-connect (OXC) system described in this paper increases the operation flexibility and reliability of the trunk-line optical networks used for data communication. It features an OXC node

2025 H8 Box Brazil TV New Version Brazilian Brasil

About this item New H8 2025 is the updated Version for Brazilian entertainment H8 now supports 2.4G and 5G Wi-Fi, as well as Ethernet connection H8 2025



FBR-11607 Fiber-Optic Distribution Box, 8-Core

FBR-11607 Fiber-Optic Distribution Box, 8-Core is a high quality product by Bud Industries used for electronic enclosure applications.



Outdoor 96/144 core fiber optic cross connect cabinet

Metal 96 Core Fiber Optic Termination Box is currently being widely used for distributing outdoor optical cable in indoor and outdoor conditions. This 96 Core



Contact Us

For datasheets, pricing, or custom telecom energy solutions, please visit:
<https://koskolong.co.za>