



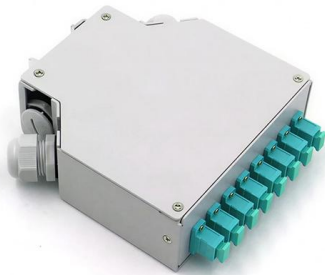
Adam Tas Corridor Energy

Bridge flow measurement frame





Bridge flow measurement frame



A Basic Guide to Bridge Measurements (Rev. A)

Many precision sensors are formed from a Wheatstone bridge circuit configuration. This circuit configuration enables accurate differential measurements for resistive elements. These elements can

Experimental study to investigate the effects of bridge geometry and

A series of experiments on bridge scale models were performed in a laboratory flume to analyze the response of the drag, lift and moment coefficients to bridge geometry (deck width, and



Bridge Measurement Analysis

In order to achieve high measurement accuracy, more complex measurement systems must be developed. This paper will describe the process of analyzing a bridge measurement using MATLAB?.

Measurement based traffic loading assessment of steel

Bridges are ageing and traffic is growing, which creates a demand for accurate fatigue life



assessment. The Europabrücke - a well known Austrian



A Basic Guide to Bridge Measurements (Rev. A)

This application note presents an overview of the bridge circuit, how bridges are used to measure different forces, how the ADC measurement is set up, and what errors can arise in the measurement.



SMS v. 12.2

Objectives This tutorial demonstrates the process of creating a pressure flow boundary condition within SRH-2D to model pressurized flow beneath a bridge. The SRH-2D "Simulations" tutorial should have



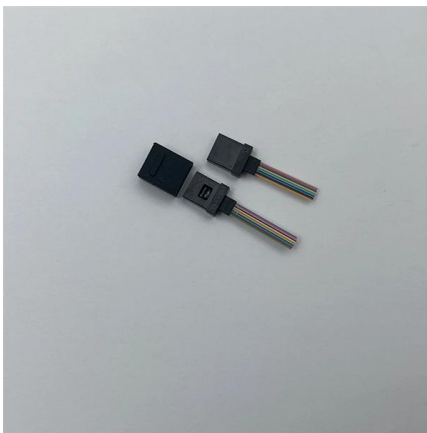
ITPro Today, Network Computing, IoT World Today combine

ITPro Today, Network Computing and IoT World Today have combined with TechTarget . The page you are looking for may no longer exist.



TML Pam-E8500A Measuring Consultants Guide

Steel beam bridge measurement is divided into four categories: static loading measurement, dynamic loading measurement, frequency measurement and vibration measurement.



CSiBridge Features , BRIDGE ANALYSIS, DESIGN

CSiBridge allows for the animation of the results of vehicles and other loads on the bridge model to graphically illustrate bridge behavior. You can create movie files

Design Manual NR/GN/CIV/200/07

The reason for having four different bridge designs is for sponsors, stakeholders, and other involved parties to be able to select a bridge design which fits well into the local setting and meets specific



Flow Measurement

Turbulent flow occurs in nonstraight sections of pipe and also occurs in straight sections when the fluid velocity exceeds a critical value. Because of the difficulty in measuring turbulent flow, the usual



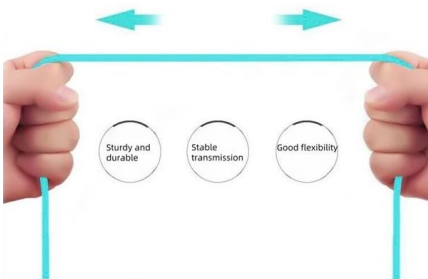
PCI Bridge Design Manual

Hydraulics at streamline the bridge flow alignment to flow) are recommended. Measures are recommended. the piers from scour Consideration activity (for example, anticipated navigable



More durable and robust

The outer layer is made of environmentally friendly PVC, which is soft and elastic. It can be stretched without damage , so you can use it with confidence.



Bridge Geometry Manual

Bridge Geometry Manual Publication No. FHWA-HIF-22-034 Infrastructure Office of Bridges and Structures

20940 ABB Flow Measure chart (Page 1)

Analog electronic or pneumatic. ± 1%full scale including transmitter, flow calibration recommended. 4:1 for given transmitter span setting. Flanged or mounted between flanges. 3" to 48" (80mm to 1200mm).





Fluid Flow Instrumentation

1.0 Fluid flow measurement Fluid flow measurement can encompass a wide variety of fluids and applications. To meet this wide variety of applications the instrumentation industry has, over many

A Basic Guide to Bridge Measurements (Rev

Many precision sensors are formed from a Wheatstone bridge circuit configuration. This circuit configuration enables accurate differential measurements for resistive elements. These elements can



Ordering information

NO	1	2	3	4	5	6
Model	SP1201	SP1202	SP1204	SP1205	SP1206	SP1204
Product name	Patch Panel	Patch Panel	Patch Panel	Patch Panel	Patch Panel	Patch Panel
Illustration						
HU	1	2	4	1	2	4
Maximum number of ports	144	288	576	144	288	576
Product code (including product and category)	482-0731114	482-0731178	482-0731177	482-0731144	482-0731180	482-0731177
Standard color code	RAL9005	RAL9005	RAL9005	RAL9005	RAL9005	RAL9005

(PDF) Flow measurements

PDF , This paper will review several techniques for flow measurements including some of the most recent developments in the field.

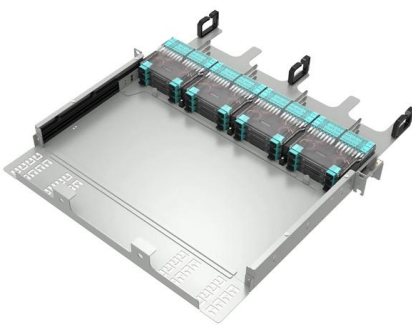
Current-meter flow rate measurement using the moving

Six comparative measurements were performed and show the excellent suitability of the moving frame method. The average difference of the



FQE Regular Bridge Frame Fitting

Practical Video Guide of how to record the facial measurements required to order a hand made spectacle frame (including a demonstration of the use of frame f



Appendix C: Cross-Frame Design Example (Curved Bridge)

For the curved bridge example here, the tributary width is simply taken as the cross-frame spacing measured along the bridge centerline rather than the chord length or arc length.



Flow measurement bracket for measuring bridge

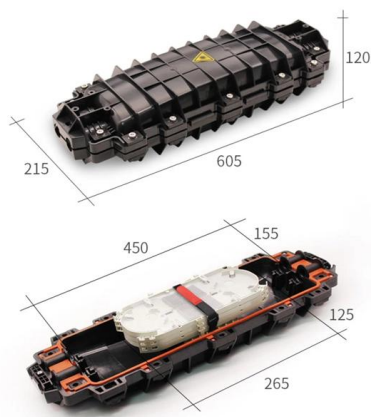
The utility model discloses a flow measurement bracket for measuring a bridge, which comprises a support, wherein a hoist is arranged on the support; the hoist is provided with a digital counter and a





Non-contact measurement method of bridge deflection based on

This paper introduces a non-contact measurement method of bridge deflection based on machine vision. Traditional bridge deflection monitoring methods have some problems, such as inconvenient



Flow measurement around scoured bridge piers using Acoustic

This failure occurs in extreme cases of unsteady flows interacting with a given structure and with changing bed condition. In order to reduce the tremendous amount of expenses involved in

The Dynamic Characteristics of Railway Portal Frame

In practice, the above-mentioned uncertainty in modelling is becoming apparent since the dynamic characteristics of short bridges, especially portal



Flow Visualization around Generic Bridge Shapes using Particle

This technology accurately measures the velocity in complex situations, such as flow around bridge decks. The velocity measurements can be used to determine streamlines, vorticity, shear strain,



How To Measure the Nose Bridge for Your Glasses

If your glasses keep sliding, pinching, or sitting too low, the bridge size is often the reason. This guide explains how to measure your glasses bridge



Types of Flow Meters and Their Applications

Types of Flowmeters , Flowmeter Types Broadly two types of flow meters are widely used in industries: Volumetric Flowmeters and Mass Flowmeters Volumetric

Bridge Analysis

Students will review and understand pertinent bridge output for the different modeling approaches and adjust the geometry to improve the bridge solution. This





LRFD Seismic Analysis and Design of Bridges Reference Manual

It provides the technical background for the National Highway Institute (NHI) Course 130093 titled LRFD Seismic Analysis and Design of Bridges, and 130093A titled Displacement-Based LRFD Seismic

Contact Us

For datasheets, pricing, or custom telecom energy solutions, please visit:
<https://koskolong.co.za>