



**Adam Tas Corridor Energy**

# **Busline Trapezoidal Cable Tray Support Installation**



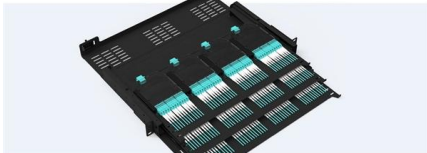


## Busline Trapezoidal Cable Tray Support Installation

---

### Pre-Terminated Patch Panel

- Standard 19" width
- Max 144 fibers in 1U
- Ultra-High Density Ready



Dual-row, easy install & maintain



Lightweight ABS MPO cassette



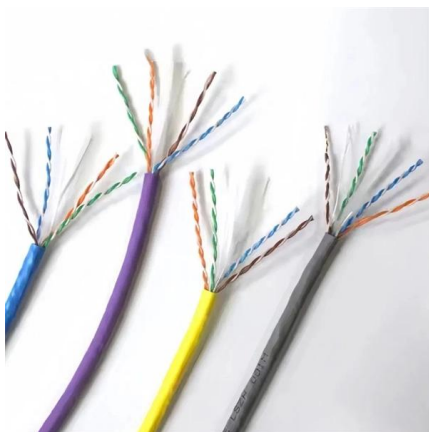
Premium sheet metal with matte coating

### Cable Tray Technical Guide A practical guide to product selection and

A practical guide to product selection and installation This guide for engineers and installers has been developed by ABB as a practical reference regarding cable tray characteristics, installation, and

### Guide to cable support systems

The mesh cable trays are suitable for the installation of power cables and cables in various areas of application. The grid spacings mean that cables can be inserted and run out in various directions.



### Support Systems for Cable Trays & Busbars

Reliable support systems for cable tray and busbars, designed for electrical and mechanical installations. Available in corrosion-resistant coatings.

### CABLE TRAYS GENERAL INFORMATION AND

Using cable trays as walkways can cause personal injury and also damage cable tray and



installed cables. Performances of cable tray systems are dependent on



### Trapeze Support Channel - Vantrunk

The slotted deep channel is supplied to an exact size to suit each width of Speedway Cable Ladder or Cable Tray and has the slots arranged uniformly along the

### CABLE TRAYS GENERAL INFORMATION AND

In order to install the cable tray supports, first find the required elevation from the floor to the bottom of the cable tray and establish a level line with a laser or a



### Mounting instructions

1 About these instructions 1.1 Target group These mounting instructions are intended for the following target group: Engineers and architects charged with the planning of cable support systems with cable



## Mounting instructions

Electrically trained specialists charged with installing cable support systems and cable trays. These instructions are based on the standards valid at the time of compilation (12/2023). Please read the



## Decoding Cable Tray Support Structures: Tips and Insights

Discover efficient cable tray support structures for optimal cable management. Learn about hanger, wall-mounted, and Unistrut systems for safer

## SUPPORT SYSTEMS

SUPPORT SYSTEMS QUICK DELIVERY We know your clients have high expectations and tight deadlines. That's why Econo Bus is a completely off-the



## 100mm Double Tier Cable Tray Trapeze Bracket - HDG

Description 100mm Cable Tray Double Tier Trapeze Support Bracket - Hot-Dip Galvanised (500mm Drop) The 100mm double tier cable tray trapeze bracket is a prefabricated, ready-to-use support



## Rooftop Cable Tray Support System

PHP's cable tray support system is engineered to sustain various sizes of cable runs on your rooftop. PHP is the leader in cable tray support systems.



## Beama Best Practice Guide , Installation Of The System , Cable

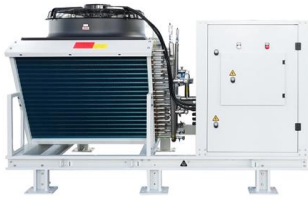
The following recommendations are intended to be a practical guide to ensure the safe and proper installation of cable ladder and cable tray systems and channel support and other support systems.



## Support methods

2 - TabLok trapeze Use TabLok profile to create trapeze-hung installations. For trapeze configurations, specify TabLok profile 4 in. wider than width of tray to be hung. Attach a 3/8 in. diameter threaded





## Four very important precautions for the installation of

Ok, let's address these three critical precautions for the installation of cables and busbar trunking systems. Table of contents: Grouping conductors in

## Cable Tray Technical Guide A practical guide to product selection and

Cable tray length is selected based on the load to be supported, the distance between the supports (also referred to as the span), and handling and installation constraints.

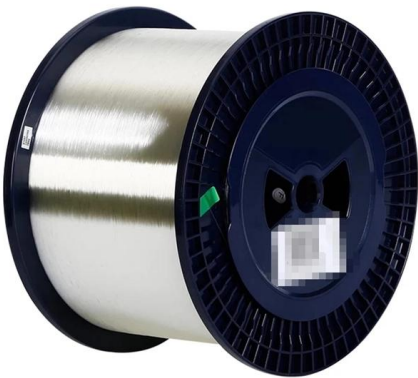


## Best practice guide to cable ladder and cable tray

Cable ladder and cable tray systems The following recommendations are intended to be a practical guide to ensure the safe and proper installation of

## Introduction

Cable bus is supplied with short circuit bracing, and conductors are phase arranged for system balance. Cable tray has no short circuit rating or system balance. Wire



### **Cable Tray Installation Guidelines , PDF , Galvanization**

The document outlines steps for laying cables, including installing supports, fixing the tray, laying cables with proper spacing, and tying them with cable ties.

### **KwikSplice cable tray system tab and lock trapeze support**

4 Once cable tray is positioned properly, close remaining tabs to clamp the cable tray to the trapeze support.



### **Cable Tray Supports for rooftops**

Walraven Cable Tray Support solutions, including mounting units and Walraven RapidStrut® channel fixing components make installation and levelling easy. High



## A Guide to Installing and Supporting Electrical Cable Trays

This guide covers the critical steps, from selecting the right electrical cable tray and performing accurate cable fill calculations to managing a safe cable pull through

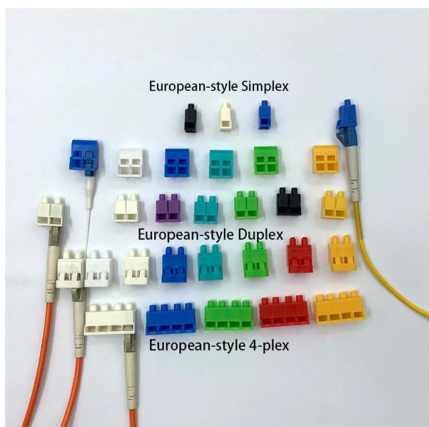
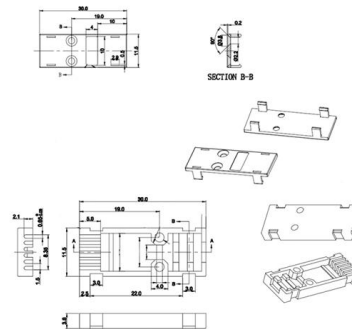


## How to Install Cable Tray: A Comprehensive Guide to Different Cable

Welcome to our step-by-step guide on installing cable trays! In this video, we'll explore the different types of cable trays available and provide detailed instructions for their installation.

## Overview of support systems for cable and equipment

There are six major types of cable supports: cable runway, center-rail systems, cable tray, wire basket, bridle rings or cable hooks, and wireway. Each is designed for



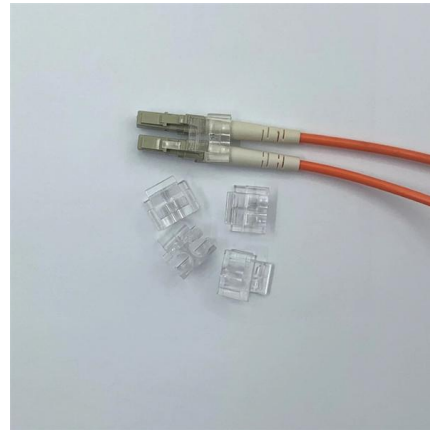
## Beama Best Practice Guide , Installation Of The System , Cable

The following recommendations are intended to be a practical guide to ensure the safe and proper installation of cable ladder and cable tray systems and channel support and other support systems.



## **B-Line series Cable Tray Design Considerations**

Our wind certification report provides you with list of acceptable B-Line series cable tray supports, fittings and covers based off of the environmental conditions, cable loading, and type of cable tray in your



## **KwikRail cable tray system Tab and lock trapeze support**

Designed for KwikRail™ cable tray system. Rated for maximum load of KwikRail cable tray system. Accepts up to 3/8" rod. Tabs clamp cable tray to trapeze support. Accepts traditional hold down

## **Cable Tray Installation Guidelines , PDF , Galvanization**

This document provides details on installing cable trays and their support systems. It includes diagrams showing how to mount cable trays on walls using pre



## **Fewer Components, Faster Installations with Conduit**

When installing multiple sizes of conduit, MC/AC cable or cable tray for your construction projects, make sure you have the products that will keep you on



## Contact Us

---

For datasheets, pricing, or custom telecom energy solutions, please visit:  
<https://koskolong.co.za>