



Adam Tas Corridor Energy

# CIF Price of Erbium-Doped Fiber Amplifier SFP





## CIF Price of Erbium-Doped Fiber Amplifier SFP

---

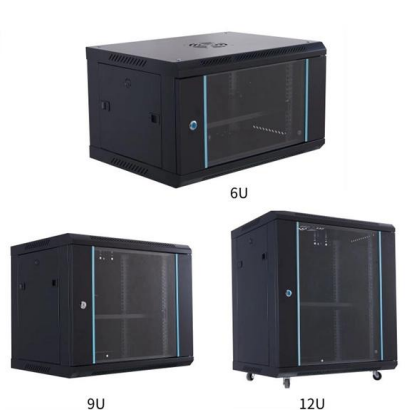


### Erbium-Doped Fiber

Erbium doped fiber amplifier (EDFA) is defined as a crucial component in advanced wavelength division multiplexing (WDM) systems that provides optical gain over a wide wavelength range, typically

### Erbium-Doped Fiber Amplifiers: Ultimate Guide

Discover the principles, applications, and benefits of Erbium-Doped Fiber Amplifiers in modern optics and telecommunications.



### Erbium-doped Fiber Amplifiers

Erbium-doped fiber amplifiers are by far the most important fiber amplifiers in the context of long-range optical fiber communications; they can efficiently amplify light in the 1.5- $\mu\text{m}$  wavelength region, where

### Flat-gain wide-band erbium doped fiber amplifier with hybrid gain

A new erbium-doped fiber amplifier (EDFA) is demonstrated using a combination of zirconia-

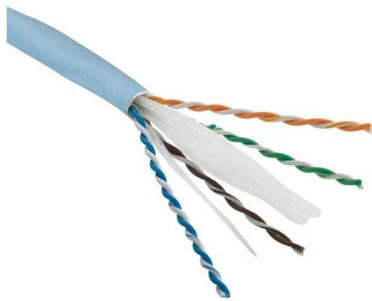


based erbium-doped fiber (Zr-EDF) and silica-based Erbium-doped fiber (Si-EDF) as the



## Erbium-Doped Fiber Amplifiers (EDFA)

Thorlabs' core-pumped erbium-doped fiber amplifiers (EDFAs) provide high small signal gains and output powers in a compact, turnkey benchtop package or a plug-in PXIe module with FC/APC (2.0



## Erbium Doped Fiber Amplifier Spec Sheet

Overview PPC's Erbium Doped Fiber Amplifier (EDFA) is an optical amplifier that is used to boost optical signals carried through a fiber optic communication system. The power of a data transmitter may be



## Erbium-Doped Fiber Amplifiers

High-power applications often involve ytterbium-sensitized fibers or double-clad fibers for enhanced pump absorption efficiency. Conclusion Erbium-doped fiber amplifiers remain a dominant technology



### Four-Core Erbium-Doped Fiber Amplifier for Bi-Directional

We demonstrate a four-core erbium-doped fiber amplifier designed for multi-core bidirectional transmission. By using a double-layered planar lightwave circuit with a built-in pump



### Optical Amplifier--EDFA (Erbium-doped Fiber Amplifier)

An Erbium-doped Fiber Amplifier (EDFA) is a device used to boost the strength of optical signals in fiber-optic communication systems. In EDFA in

?????????? ?????????? ??????????  
**iig,Nttn,igw,Bdix,Mac,**

EDFA (Erbium-Doped Fiber Amplifier): EDFA is employed to amplify optical signals in the downstream direction. As signals travel along the fiber optic network, they experience attenuation due to fiber losses.



### Erbium-Doped Fiber Amplifiers (EDFAs): Foundations

EDFAs operate on the principle of stimulated emission in erbium-doped silica fibers. A segment of optical fiber, typically 10-30 meters long, is



## Erbium-Doped Fiber Amplifier Market Research Report 2033

The Erbium-Doped Fiber Amplifier market is brimming with opportunities, particularly in the context of 5G and next-generation broadband rollouts. The global push towards ubiquitous high-speed connectivity

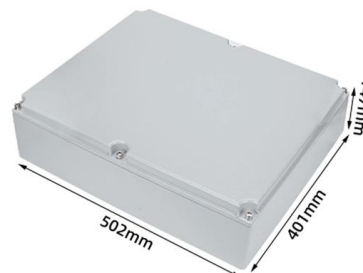


## Erbium Doped Fiber Amplifier

Discover erbium doped fiber amplifiers with 1550nm wavelength, SNMP management, and CE certification. Ideal for FTTH, CATV, and DWDM systems.

## Erbium Doped Fibre Amplifier for C-Band

FWA-1550C series gain fiber pre-amplifier uses advanced electronic control technology and complete software functions. By optimizing the optical path, it has





## Erbium-doped fiber: Amplifiers: What everyone needs to know

This paper discusses erbium-doped fiber amplifiers and its applications. EDFA gain performance and fiber optimization, EDFA saturation and output power, amplified spontaneous

### 15 Must-Know Questions for Erbium-Doped Fiber

EDFA stands for Erbium-doped fiber amplifier, a vital element in optical communication systems. In this article, we'll delve into 15 key questions



### What is the Erbium-doped Optical Fiber Amplifier (EDFA) ? , Sopto

EDFA fiber amplifier, also known as erbium-doped fiber amplifier, is a major breakthrough in optical fiber communication technology because it can directly amplify weak optical signals without going through

### Erbium Doped Fiber Amplifier

An Erbium-Doped Fiber Amplifier (EDFA) is a specialized optical device that boosts the strength of weak light signals in fiber optic communication systems without converting them into electrical signals.



### **Compact and flat-gain fiber optical amplifier with Hafnia-Bismuth**

For the first time, we demonstrated a compact Erbium-doped fiber amplifier (EDFA) using a newly developed Hafnia Bismuth Erbium co-doped fiber (HBEDF) as a gain medium. The HBEDF



### **High Power EDFA**

Erbium-doped fiber amplifier (EDFA) is an optical repeater device that is used to boost the intensity of optical signals being carried through a fiber optic communications system. Dual pump EDFA consists



Hier sollte eine Beschreibung angezeigt werden, diese Seite lässt dies jedoch nicht zu.



## Doped Fiber Amplifier

A relatively recent advance in fiber optics is the development of the erbium- doped fiber amplifier (EDFA). A length of fiber with the element erbium added can act as an amplifier for light in



## Erbium Doped Fibers , Rare Earth Doped Optical Fibers

Fibercore's MetroGain range is designed for high efficiency 'Metro-style' Erbium Doped Fiber Amplifier (EDFA) configurations, single stage amplifiers, Amplified Spontaneous Emission (ASE) light sources

## Specialty Doped Fiber , Fibercore

Dual Clad Erbium/Ytterbium doped Fiber - All glass fiber used in high power amplifiers (YEDFAs) for use up to 5W pump power. Utilizing Fibercore's petal shape design, the CP1500Y fiber has been



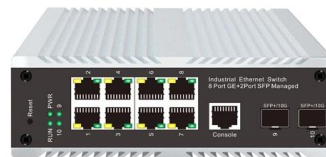
## Erbium-Doped Fiber

An erbium-doped fiber amplifier is one of the most popular optical devices in modern optical communication systems as well as in fiber-optic instrumentation. EDFAs provide many advantages



## Erbium Doped Fiber Amplifier Market Size, Share, and Forecasts 2031

Erbium Doped Fiber Amplifier Market Trends  
Expansion of 5G and FTTH Networks: EDFAs are increasingly deployed in metro and access networks supporting 5G fronthaul and fiber-to



## Specialty Doped Fiber , Fibercore

These fibers are used in amplified spontaneous emission (ASE) light sources, erbium doped fiber amplifiers (EDFAs), and fiber lasers. OEM Amplifier Gainblock - Building block for amplifiers and

## Customized In-Line EDFA for DWDM Networks

The DWDM EDFA is a low-noise, gain-flattened C-band optical erbium doped fiber amplifier (EDFA) designed to extend the distance in dense wavelength-division multiplexing (DWDM) optical





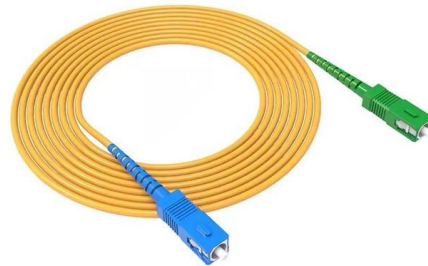
## Erbium-doped Fiber Amplifiers - Buying Guide & Suppliers



This erbium-doped fiber amplifiers buying guide provides technical background, comparison of major types, selection criteria, and an overview of suppliers.

### Erbium-Doped Fibers

Featuring high absorption levels, these fibers provide reduced length, superior signal integrity, a minimal noise figure, and low nonlinear effects, making them ideal for use in erbium-doped fiber amplifiers



### Contact Us

---

For datasheets, pricing, or custom telecom energy solutions, please visit:  
<https://koskolong.co.za>