



**Adam Tas Corridor Energy**

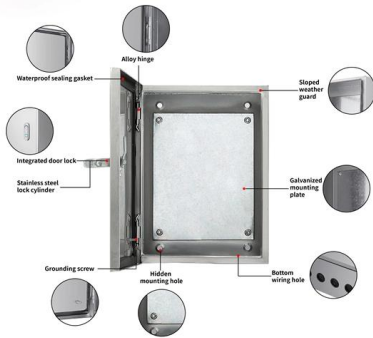
# **Cable Tray Configuration and Installation**





## Cable Tray Configuration and Installation

---

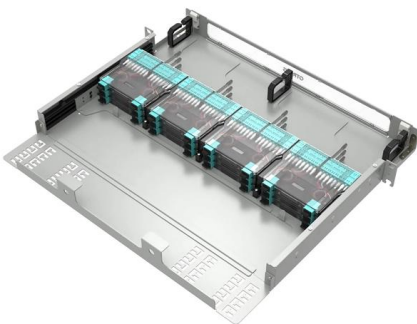


### Cable tray manual

These documents: ANSI/NEMA VE-1, Metal Cable Tray Systems; NEMA VE-2, Cable Tray Installation Guidelines; and NEMA FG-1, Non Metallic Cable Tray Systems, are an excellent industry resource in

### Master Cable Tray Installation: A Professional Step-by

Learn how to install cable trays for large-scale projects with our professional, step-by-step guide covering industry standards, safety protocols,

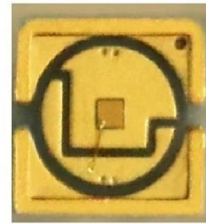


### Best Practices for Installing Cables in Trays

Learn the best practices for installing cables in trays. This guide covers essential steps, technical requirements, and key details

### Cable Tray Installation

Learn everything about cable tray installation with our complete guide. Discover types, steps, and safety tips for efficient electrical cable



## **Cable Tray Technical Guide A practical guide to product selection and**

Cable Tray Technical Guide A practical guide to product selection and installation This guide for engineers and installers has been developed by ABB as a practical reference regarding cable tray



## **How to Fix Common Cable Management Issues using**

Discover common cable management problems and how cable tray accessories effectively solve them to ensure safety and performance.



## **STAINLESS STEEL CABLE TRAYS, 304 316 STAINLESS STEEL**

Stainless steel cable tray is available in ten standard widths - 50mm, 75mm, 100mm, 150mm, 225mm, 300mm, 450mm, 600mm, 750mm and 900mm. A full range of couplers, bends, tees and risers are





## Cable Trays

Adaptability: Cable trays can be customized to fit various spaces, from suspended ceiling installations to floor-mounted configurations, making them a versatile



## How to install Cable Trays - Best Guide in 2026

Step-by-step on-site guide: learn how to plan, mark, support, and install cable trays correctly, from shop drawing approval to final checks.

## 5 Steps to Learn How to Install Cable Trays

Installing a cable tray system requires careful planning to ensure it can support the weight of the cables and adheres to electrical safety codes. Here



## GUIDE CABLE TRAYS TECHNICAL

If it has excellent electrical continuity and is integrated in the installation's equipotential bonding system, a metal cable tray reduces the coupling's impact and thus contributes to good EMC of the electrical



### **Cable Tray Support Spacing: Key Guidelines Explained**

Cable Installation: Lay the cables on the tray, distributing weight evenly. Cable Management: Use straps to secure cables, preventing movement



### **A Guide to Installing and Supporting Electrical Cable Trays**

This guide covers the critical steps, from selecting the right electrical cable tray and performing accurate cable fill calculations to managing a safe cable pull through



### **Cable Tray Technical Guide A practical guide to product selection and**

A practical guide to product selection and installation This guide for engineers and installers has been developed by ABB as a practical reference regarding cable tray characteristics, installation, and





## DK-07 WOOD

Designed for a Clean, Organized Workspace Dual cable pass-through holes on the desktop, paired with rear cable clips and a cable tray, help route cables neatly out of sight. The result is a clutter-free desk

## Mastering Cable Tray Installation , Step-by-Step Guide for a Seamless

Learn how to install cable trays correctly. Get the ultimate step-by-step guide on setting up a seamless and reliable cable management system.



## Cable Tray Installation Man Hours

Below are the list for cable tray installation man hour which include cable tray, cable tray cover; cable tray fittings such as 90 degree horizontal

## A Guide to Cable Tray Accessories and Their Functions

Explore a detailed guide to cable tray accessories and understand their uses in ensuring safety, stability, and efficiency in electrical system



## 10 Best Desk Cable Management Trays to Keep Your Workspace

With its no-drill installation feature, the 2 Pack Cable Management Under Desk Tray is perfect for anyone wanting to keep their workspace tidy without damaging their desk.

## Mastering Cable Tray Installation , Step-by-Step Guide for a Seamless

Mastering cable tray installation is crucial for creating a safe, organised, and efficient cable management system. By following this step-by-step guide, you can ensure a seamless setup that



## Contact Us

---

For datasheets, pricing, or custom telecom energy solutions, please visit:  
<https://koskolong.co.za>