



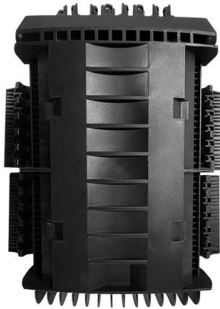
Adam Tas Corridor Energy

Cable Tray Machinery Standard





Cable Tray Machinery Standard

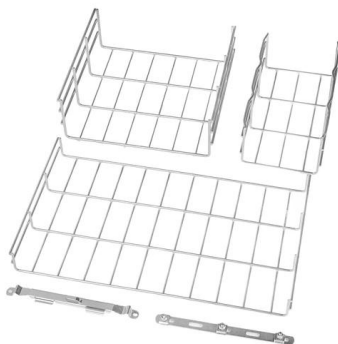
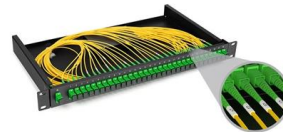


Annex I

Example of a non-standard junction of cable trays, only in particular cases indicated in the cable trays manufacturing drawings, like Tokamak seismic isolation pit, or non-standard fittings.

Cable tray

In the electrical wiring of buildings, a cable tray system is used to support insulated electrical cables used for power distribution, control, and communication. Cable



Cable Tray Standards: A Global Overview of Production

Explore the cable tray standards of 30 countries across five continents. Learn about the key regulations and installation practices for cable

Cable Tray Spacing Standards for Installation and Safety

The Importance of Cable Tray Spacing in Electrical Infrastructure Cable tray spacing is a



critical aspect of electrical infrastructure,
influencing both



1185-2019

Scope: This recommended practice provides guidance for wire and cable installation practices in generating stations and industrial facilities. It covers installation of cable in trays, conduit, duct banks,



Cable Tray Technical Guide A practical guide to product selection and

Cable Tray Technical Guide A practical guide to product selection and installation This guide for engineers and installers has been developed by ABB as a practical reference regarding cable tray



Understanding IEC 61537: A Comprehensive Guide to

Focusing on the technical aspects of cable tray systems, IEC 61537 outlines strict requirements and regulatory guidelines for various technical indicators.





IEC Standard for Cable Tray: Complete Technical Guide

One of the most recognized frameworks globally is the IEC standard for cable tray systems. This standard ensures safety, durability, and performance

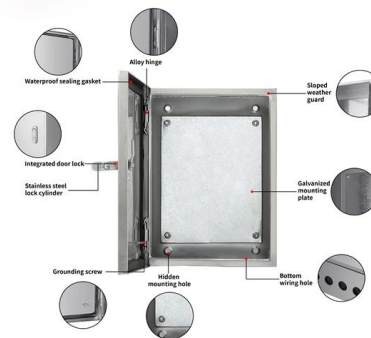


Fiberglass Perforated Frp Cable Tray Customizable Logo Durable And

Fiber-reinforced plastic (FRP) cable trays are a durable and lightweight cable management solution made of fiber-reinforced plastic, a composite material in which glass fibers are embedded in a

Method Statement installation of Cable Trays and Ladders

This method statement covers the site installation of the cable tray & ladders and the requirements of checks to be carried out.



Best Practice Guide to Cable Ladder and Cable Tray Systems

This guide covers cable ladder systems, cable tray systems, channel support systems and associated supports intended for the support and accommodation of cables and possibly other electrical



Codes and Standards , Cable Tray Institute

Purchase UL 568. FG 1, Fiberglass Cable Tray Systems Covers construction and test requirements for continuous, complete nonmetallic systems of ladder, ventilated, solid bottom cable trays, or channel



Full page photo

7HFKQLFDO 6SHFLILFDWLRQ IRU & DEOH WUD LQVWDOODWLRQ DQG FDEOH ODLQJ ZRUN

GUIDE CABLE TRAYS TECHNICAL

NEMA VE 1-2017 Specifies requirements for metal cable trays and associated fittings designed for use in accordance with the rules of Canadian Electrical Code, Part I and the National Electrical Code®





Cable Trays

Heavy duty cable trays and cable ladders are manufactured from pre-galvanized or hot-dipped galvanized sheet metal, designed to meet ideal environmental

Cable Tray Support Spacing: Key Guidelines Explained

Explore the essential cable tray support spacing requirements for safe and efficient installations. Learn NEC guidelines for perforated, ladder, and wire



Cable Tray Systems: Requirements and Best Practices

Comprehensive guide to cable tray systems requirements: tray types, materials, loading, supports, bonding, routing, and best practices for safe electrical cable management.



Guide to cable support systems

A cable support system consists of cable support lengths and system components, such as cable support fittings, support elements, mounting elements and system accessories. The cable support



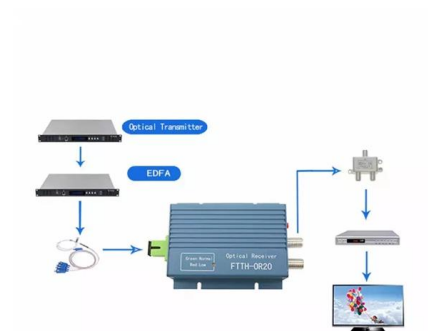


IEC Standard for Cable Tray: Complete Technical Guide

IEC Standard for Cable Tray: Complete Technical Guide The International Electrotechnical Commission (IEC) provides detailed guidelines for

Height 100-150mm Perforated Cable Tray Punching Cable Tray

Perforated Cable Tray is a standardized, structural support system designed to securely manage and route electrical cables, data/communication lines, and other mechanical services in industrial,

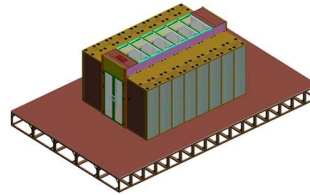


NEC Standards for Cable Trays: Grounding, Fill Capacity

Not all cables can be installed in cable trays, and this is an important consideration for anyone involved in electrical installations or maintenance. The National Electrical Code (NEC) lays

Guide to cable support systems

The mesh cable trays are suitable for the installation of power cables and cables in various areas of application. The grid spacings mean that cables can be inserted and run out in various directions.



Cable Tray Standards , Cable Management , Metsec

Metsec cable tray systems are usually assembled using M6 roofing bolts particularly for couplers, fishplates and connection to supporting framework. These bolts



Using IEC Standards in Cable Tray and Conduit System

Effective cable tray and conduit system planning is essential for both new installations and retrofit projects. It helps prevent overheating, mechanical



Contact Us

For datasheets, pricing, or custom telecom energy solutions, please visit:
<https://koskolong.co.za>